

All distances must be from the outer boundaries of the Section.

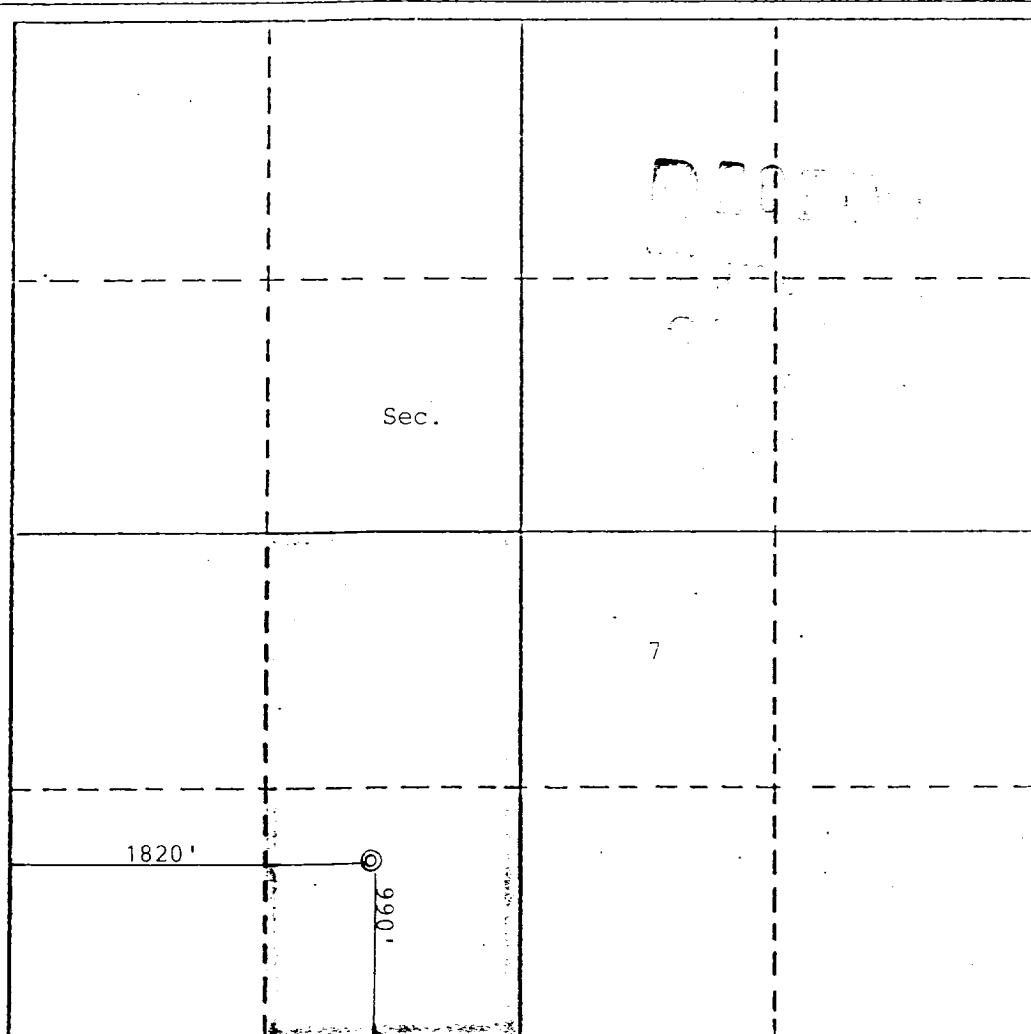
Operator MERRION OIL & GAS CORP.		Lease Chaco		Well No. 2
Unit Letter N	Section 7	Township 26N	Range 12W	County San Juan
Actual Postage Location of Well: 990 feet from the South line and 1820 feet from the West line				
Ground Level Elev. 5958	Producing Formation Pictured Cliffs	Pool WAW Fruitland Pictured Cliffs Sand	Dedicated Acreage: 160 Acres	

1. Outline the acreage dedicated to the subject well by colored pencil or hachure marks on the plat below.
2. If more than one lease is dedicated to the well, outline each and identify the ownership thereof (both as to working interest and royalty).
3. If more than one lease of different ownership is dedicated to the well, have the interests of all owners been consolidated by communitization, unitization, force-pooling, etc?

☐ Yes ☐ No If answer is "yes," type of consolidation \_\_\_\_\_

If answer is "no," list the owners and tract descriptions which have actually been consolidated. (Use reverse side of this form if necessary.) \_\_\_\_\_

No allowable will be assigned to the well until all interests have been consolidated (by communitization, unitization, forced-pooling, or otherwise) or until a non-standard unit, eliminating such interests, has been approved by the Division.



CERTIFICATION

I hereby certify that the information contained herein is true and complete to the best of my knowledge and belief.

*Steven S. Dunn*  
Name

Steven S. Dunn  
Position

Operations Manager

Company  
Merrion Oil & Gas Corp.

Date  
12/18/88

I hereby certify that the well location shown on this plat was plotted from field notes of actual surveys made by me or under my supervision, and that the same is true and correct to the best of my knowledge and belief.

Date Surveyed

Registered Professional Engineer and/or Land Surveyor

Certificate No.

0 330 660 990 1320 1650 1980 2310 2640 2000 1500 1000 500 0