





# Chaco #3 Wellbore Schematic

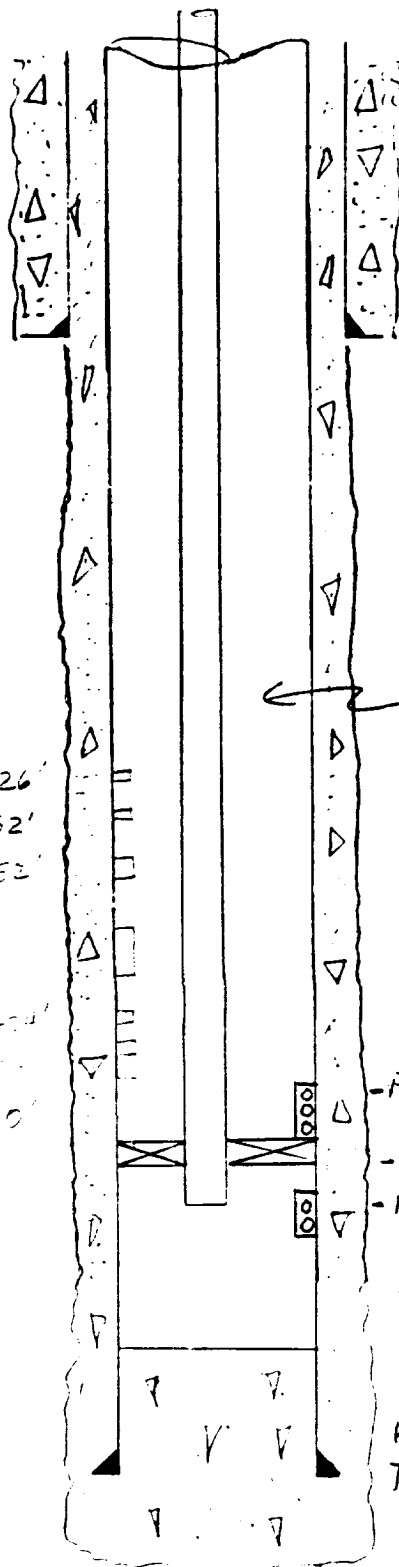
GFS  
6-26-90

Location: 1850' FNL 790' FEL  
Sec 12 T26N R13W

Elevation: 6004' G.L.

Tops:

Kirtland 165'  
Fruitland 923'  
Pictured Cliffs 1214'



7 7/8" hole

5 1/2" 15.5 # csg @ 41'  
Cmt to surf w/ 10 sx

4 3/4" hole

2 7/8" 6.5 # csg @ 1278'  
Cmt w/ 100 sx Class 6  
TOC @ 400' per CBL

← 34 jts 1 1/4" 2.4# EVE

## PROPOSED PERFS

924-26'  
950-52'  
1047-52'

1045-114'

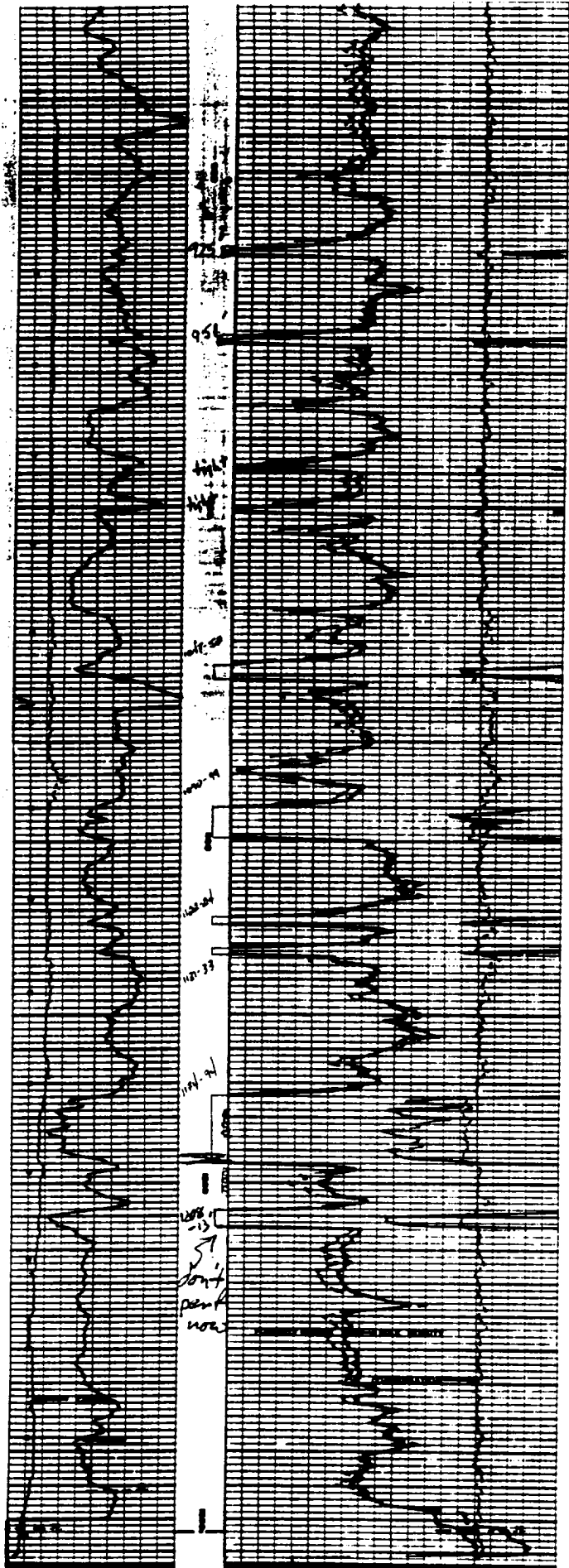
1122-114'  
1178-1194'  
1196-1204'

## CURRENT PERFS

- Fruitland Coal Perfs  
1178-86 2SPF
- Baker Retrievable Plug @ 1185' Tally (1194')
- Fruitland Sand Perfs?  
1196-1204 2SPF
- acidize combined perfs w/  
336 gal 15% HCl

PBTD = 1257'

TD = 1300'



Chaco #3  
3-14-77 Densilog

0	13
HOLE SIZE - INCHES	
0	200
API UNITS	

0	20	10	0	10
SANDSTONE POROSITY %				
GRAM DENSITY - 2.65 GM/CC				
2.6	2.5	2.4	2.3	2.2