

UNITED STATES
DEPARTMENT OF THE INTERIOR
BUREAU OF LAND MANAGEMENT

SUBMIT IN TRIPPLICATE*
(Other instructions on
reverse side)

Form approved.
Budget Bureau No. 1004-0136
Expires August 31, 1985

APPLICATION FOR PERMIT TO DRILL, DEEPEN, OR PLUG BACK

1a. TYPE OF WORK

DRILL ☐

DEEPEN ☐

PLUG BACK ☒

b. TYPE OF WELL

OIL
WELL ☐

GAS
WELL ☒

OTHER

SINGLE
ZONE ☐

MULTIPLE
ZONE ☐

2. NAME OF OPERATOR

Merrion Oil & Gas Corporation

3. ADDRESS OF OPERATOR

P. O. Box 840, Farmington, New Mexico 87499

4. LOCATION OF WELL (Report location clearly and in accordance with any State requirements.)*
At surface

790' FSL & 790' FWL

At proposed prod. zone

14. DISTANCE IN MILES AND DIRECTION FROM NEAREST TOWN OR POST OFFICE*

15. DISTANCE FROM PROPOSED*
LOCATION TO NEAREST
PROPERTY OR LEASE LINE, FT.
(Also to nearest drig. unit line, if any)

16. NO. OF ACRES IN LEASE

17. NO. OF ACRES ASSIGNED
TO THIS WELL

18. DISTANCE FROM PROPOSED LOCATION*
TO NEAREST WELL, DRILLING, COMPLETED,
OR APPLIED FOR, ON THIS LEASE, FT.

19. PROPOSED DEPTH

1310'

20. ROTARY OR CABLE TOOLS

Rotary

21. ELEVATIONS (Show whether DF, RT, GR, etc.)

6015' GL

22. APPROX. DATE WORK WILL START*

As soon as possible

23. PROPOSED CASING AND CEMENTING PROGRAM

SIZE OF HOLE	SIZE OF CASING	WEIGHT PER FOOT	SETTING DEPTH	QUANTITY OF CEMENT

We plan to plug back the subject well and complete it in the Fruitland Coal.

Attached is a procedure for your approval.

RECEIVED
JUL 31 1990
OIL CON. DIV.
DIST. 3

IN ABOVE SPACE DESCRIBE PROPOSED PROGRAM: If proposal is to deepen or plug back, give data on present productive zone and proposed new productive zone. If proposal is to drill or deepen directionally, give pertinent data on subsurface locations and measured and true vertical depths. Give blowout preventer program, if any.

24.

SIGNED George F. Sharpe

TITLE Reservoir Engineer

DATE 7/09/90

(This space for Federal or State office use)

PERMIT NO. _____

APPROVAL DATE _____

APPROVED BY _____
CONDITIONS OF APPROVAL, IF ANY:

TITLE

NMOCC

DATE JUL 23 1990

FOR AREA MANAGER

APPROVED

*See Instructions On Reverse Side

Title 18 U.S.C. Section 1001, makes it a crime for any person knowingly and willfully to make to any department or agency of the United States any false, fictitious or fraudulent statements or representations as to any matter within its jurisdiction.

Submit to Appropriate
District Office
State Lease - 4 copies
Fee Lease - 3 copies

State of New Mexico
Energy, Minerals and Natural Resources Department

Form C-102
Revised 1-1-89

OIL CONSERVATION DIVISION

P.O. Box 2088
Santa Fe, New Mexico 87504-2088

DISTRICT I
P.O. Box 1980, Hobbs, NM 88240

DISTRICT II
P.O. Drawer DD, Artesia, NM 88210

DISTRICT III
1000 Rio Brazos Rd., Aztec, NM 87410

WELL LOCATION AND ACREAGE DEDICATION PLAT

All Distances must be from the outer boundaries of the section

Operator Merrion Oil & Gas Corporation			Lease Chaco Limited		Well No. 1
Unit Letter M	Section 1	Township 26N	Range 13W	County NMPM	San Juan
Actual Footage Location of Well: 790 feet from the South line and 790 feet from the West line					
Ground level Elev. 6015	Producing Formation Fruitland Coal			Pool Basin	Dedicated Acreage: 320 Acres

1. Outline the acreage dedicated to the subject well by colored pencil or hatchure marks on the plat below.

2. If more than one lease is dedicated to the well, outline each and identify the ownership thereof (both as to working interest and royalty).

3. If more than one lease of different ownership is dedicated to the well, have the interest of all owners been consolidated by communitization, unitization, force-pooling, etc.?

☐ Yes ☐ No If answer is "yes" type of consolidation

If answer is "no" list the owners and tract descriptions which have actually been consolidated. (Use reverse side of this form if necessary.)

No allowable will be assigned to the well until all interests have been consolidated (by communitization, unitization, forced-pooling, or otherwise) or until a non-standard unit, eliminating such interest, has been approved by the Division.

RECEIVED

JUL 31 1990

OIL CON. DIV.
DIST. 3

OPERATOR CERTIFICATION

I hereby certify that the information contained herein is true and complete to the best of my knowledge and belief.

Signature

Printed Name

George F. Sharpe

Position

Reservoir Engineer

Company

Merrion Oil & Gas Corp.

Date

July 9, 1990

SURVEYOR CERTIFICATION

I hereby certify that the well location shown on this plat was plotted from field notes of actual surveys made by me or under my supervision, and that the same is true and correct to the best of my knowledge and belief.

Date Surveyed

Signature & Seal of
Professional Surveyor

Certificate No.

790'

790'

0 330 660 990 1320 1650 1980 2310 2640 2000 1500 1000 500 0

MERRION OIL & GAS CORPORATION

CHACO LIMITED NO. 1

FRUITLAND COAL RECOMPLETION

LOCATION: 790' FSL & 790' FWL
Section 1, T26N, R13W
San Juan County, New Mexico

ELEVATION: 6015' GL

PREPARED BY: George F. Sharpe

DATE: 7/9/90

PROCEDURE:

- 1) MIRU Ram Rig. ND WH. NU BOPs. PU and RIH with 2-7/8" tension packer on 1-1/4" EUE tubing with slim hole couplings. Set packer at 950'. Pressure test annulus to 2500 psi. Release packer. POOH and lay down tubing. Swab down casing to 1000'. ND BOPs. NU WH. RD MOL.
- 2) RU Wireline. Set CIBP at 1221' to isolate Pictured Cliffs perms 1223'-24'. RIH and perforate Fruitland Coal 1182'-1204' and 1212'-18' with 2 SPF (4-8-77 Density Log). RD Wireline.
- 3) RU Pump Company. Breakdown perms with 750 gal 7-1/2% HCl with 5 gal/1000 iron sequestering agent, 1/2 gal/1000 clay stablizer, and 70 RCN balls. Surge off balls. Frac well with procedure supplied at later date. RD Pump Company. Test for 1 week.
- 4) MIRU Wireline. Tag fill. Dump enough frac sand in well to fill to 1160'. Perforate Fruitland Coal 988', 1045'-50', 1096'-1102', and 1122'-28' with 2 SPF (36 holes total).
- 5) RU Pump Company. Breakdown perms with 500 gal 7-1/2% HCl and 55 balls total. Surge off balls. Frac well with procedure supplied at later date. RD Pump Company. Test for 1 week.
- 6) MIRU Ram. ND WH. NU BOPs. RIH with 1-1/4" EUE tubing with slim hole couplings. Circulate out balls and sand to CIBP at 1221'. POOH. Swab down casing. RIH and land 1-1/4" tubing at \pm 1100'. RDMOL. (If necessary, run 1-1/16" tubing pump and 5/8" rods with slim hole couplings. Pump unit to be specified at later date.)

GFS/eg

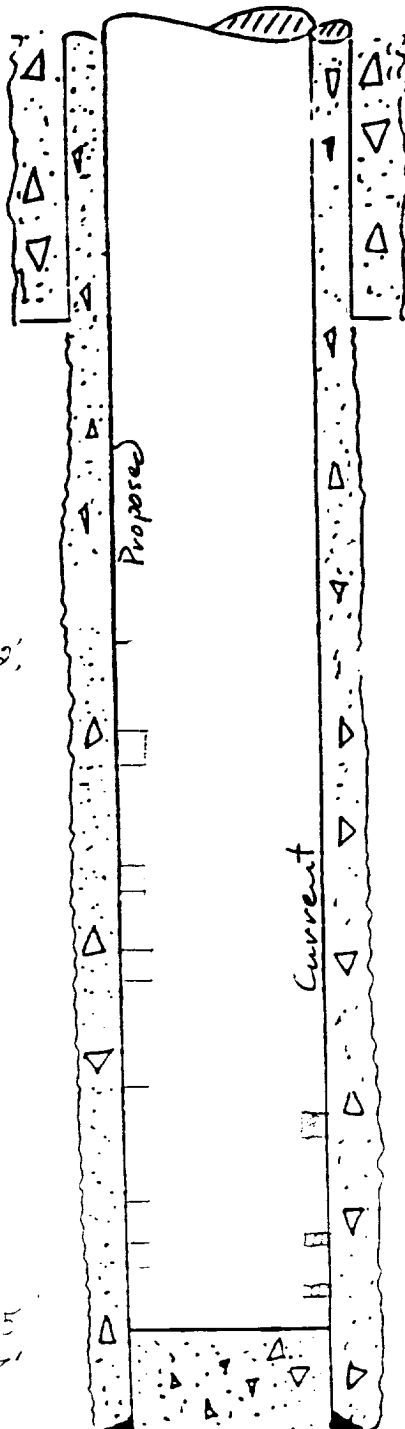
APPROVED: _____

DATE: _____

HASCO LTD "1" (PREVIOUSLY "HA'D" "2")
WELLBORE SCHEMATIC

LOCATION: 770' ECL 770' FWL
SECTION 1, T26N R13W

ELEVATION: 6015' GL.



7 7/8" HOLE
5 1/8" 15.5# J-55 BLUE BAND W. 15.5
CMT W/ 6 SX

TOC @ 436'

PROPOSED

PERF FRUITLAND COAL:
958' - 1045' 50' 1096' - 1108'
1122' - 28' 1182' - 1204'
1212' - 18'

TOPS:

KIRTLAND - 170'
FRUITLAND - 160'
PIL. 1175' - 1210'

PERF 385'
TO 1357'

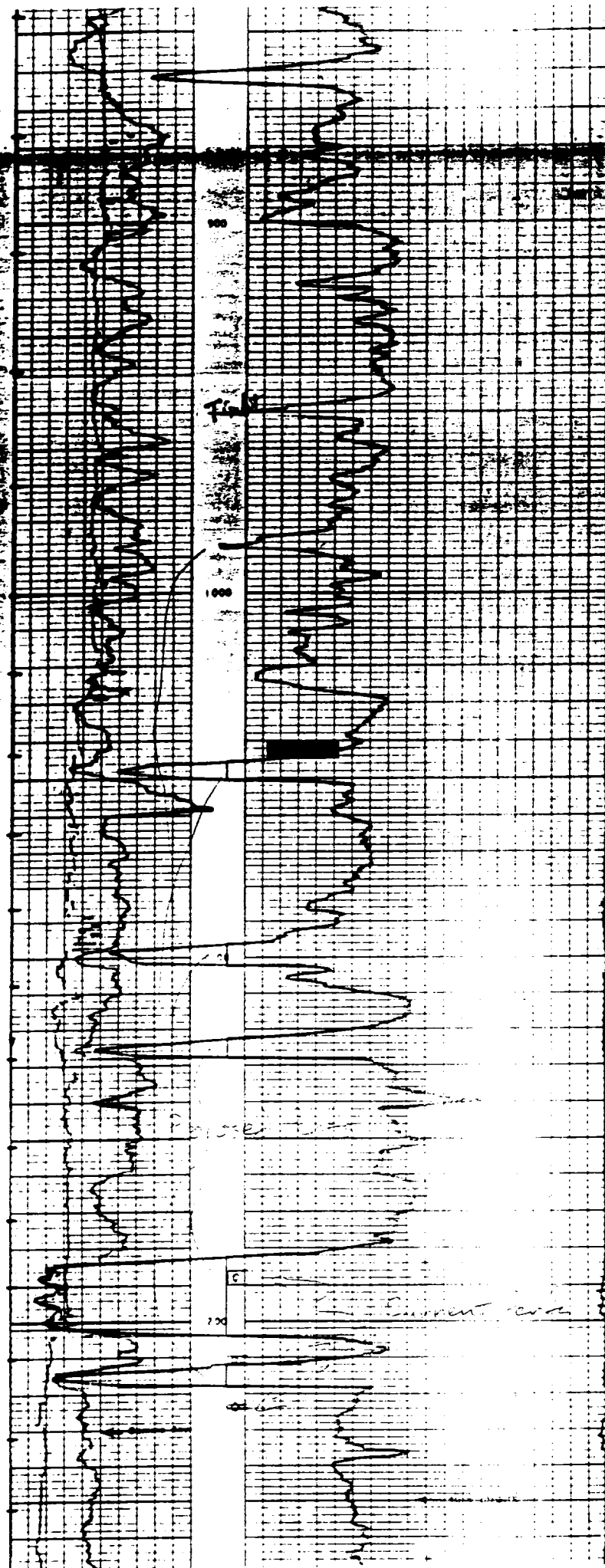
CURRENT PERFS

PERF FRUITLAND COAL:
1126' - 10' 1210' - 15'

PERF KIRTLAND COAL:
1253' - 5'

3 1/2" HOLE
2 7/8" NU 15.5# J-55 W 130' AL
CMT W/ 100 SX

5 7/8" CAPACITY: 100579 261/24
10325 442/24



Chaco Limited

Gamma Ray - Density Log