

UNITED STATES
DEPARTMENT OF THE INTERIOR
GEOLOGICAL SURVEY30-085-22659
5. LEASE DESIGNATION AND SERIAL NO.
Navajo-Contract No.
14-20-603-5019
6. IF INDIAN, ALLOTTEE OR TRIBE NAME

APPLICATION FOR PERMIT TO DRILL, DEEPEN, OR PLUG BACK

1a. TYPE OF WORK

DRILL ☒DEEPEN ☐PLUG BACK ☐

b. TYPE OF WELL

OIL
WELL ☒GAS
WELL ☒

OTHER

SINGLE
ZONE ☐MULTIPLE
ZONE ☐

2. NAME OF OPERATOR

Mobil Oil Corporation

3. ADDRESS OF OPERATOR

3 Greenway Plaza East, Suite 800, Houston, Texas 77046

4. LOCATION OF WELL (Report location clearly and in accordance with any State requirements.)*

At surface

1050' FNL & 1845' FWL Sec. 9, T26N, R18W

At proposed prod. zone

Same as Surface

14. DISTANCE IN MILES AND DIRECTION FROM NEAREST TOWN OR POST OFFICE*

7. UNIT AGREEMENT NAME

8. FARM OR LEASE NAME

Navajo

9. WELL NO.

3

10. FIELD AND POOL, OR WILDCAT

Tocito Dome Penn "D"

11. SEC., T., R., M., OR BLK.
AND SURVEY OR AREA

Sec. 9, T26N, R18W

12. COUNTY OR PARISH

San Juan

13. STATE

New Mexico

15. DISTANCE FROM PROPOSED*
LOCATION TO NEAREST
PROPERTY OR LEASE LINE, FT.
(Also to nearest drlg. unit line, if any)

795

16. NO. OF ACRES IN LEASE

1440

17. NO. OF ACRES ASSIGNED
TO THIS WELL

160

18. DISTANCE FROM PROPOSED LOCATION*
TO NEAREST WELL, DRILLING, COMPLETED,
OR APPLIED FOR, ON THIS LEASE, FT.

3573

19. PROPOSED DEPTH

6350

20. ROTARY OR CABLE TOOLS

Rotary

21. ELEVATIONS (Show whether DF, RT, GR, etc.)

Ground - 5751

22. APPROX. DATE WORK WILL START*

As Soon As Possible

23.

PROPOSED CASING AND CEMENTING PROGRAM

SIZE OF HOLE	SIZE OF CASING	WEIGHT PER FOOT	SETTING DEPTH	QUANTITY OF CEMENT
17-1/2"	13-3/8"	48# H-40	0-100'	(1) Circulate to Surface
12-1/4"	8-5/8"	24# K-55	0-1600'	(2) Circulate to Surface
7-7/8"	5-1/2"	14# K-55	0-6350'	(3) Circulate to Surface

(1) Class H Neat with 2% CaCl₂(2) Class H with 8% gel & 2% CaCl₂ Tail in with Class H Neat w/2% CaCl₂

(3) Class H with 7% salt sx.

Blowout Preventer & Mud Programs Attached



IN ABOVE SPACE DESCRIBE PROPOSED PROGRAM: If proposal is to deepen or plug back, give data on present productive zone and proposed new productive zone. If proposal is to drill or deepen directionally, give pertinent data on subsurface locations and measured and true vertical depths. Give blowout preventer program, if any.

24.

SIGNED

A. D. Bond

TITLE

Regulatory

Engineering Coordinator

DATE

July 13, 1977

(This space for Federal or State office use)

PERMIT NO.

APPROVAL DATE

APPROVED BY

TITLE

CONDITIONS OF APPROVAL, IF ANY:

JUL 25 1977

U. S. GEOLOGICAL SURVEY

*See Instructions On Reverse Side

NEW MEXICO OIL CONSERVATION COMMISSION
WELL LOCATION AND ACREAGE DEDICATION PLAT

Form C-101
Supersedes C-128
Effective 1-1-65

All distances must be from the outer boundaries of the Section.

Operator Mobil Oil Corporation			Lease Navajo		Well No. 3
Unit Letter C	Section 9	Township 26N	Range 18W	County San Juan	
Actual Footage Location of Well: 1050 feet from the north line and 1845 feet from the west line					
Ground Level elev. 5751	Producing Formation Pennsylvanian		Pool Tocito Dome Penn "D"		Dedicated Acreage: 160 Acres

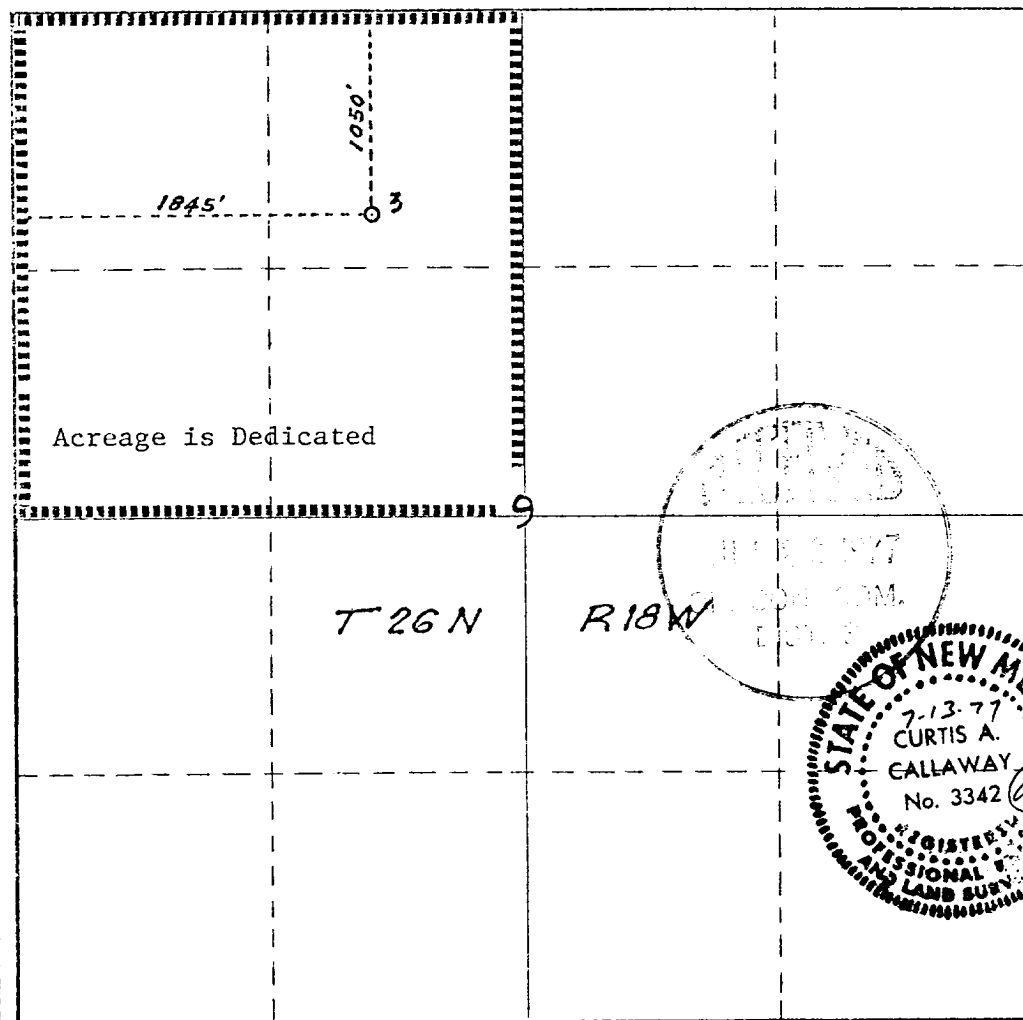
1. Outline the acreage dedicated to the subject well by colored pencil or hatchure marks on the plat below.
2. If more than one lease is dedicated to the well, outline each and identify the ownership thereof (both as to working interest and royalty).
3. If more than one lease of different ownership is dedicated to the well, have the interests of all owners been consolidated by communitization, unitization, force-pooling, etc?

☐ Yes ☐ No If answer is "yes," type of consolidation _____

If answer is "no," list the owners and tract descriptions which have actually been consolidated. (Use reverse side of this form if necessary.) _____

No allowable will be assigned to the well until all interests have been consolidated (by communitization, unitization, forced-pooling, or otherwise) or until a non-standard unit, eliminating such interests, has been approved by the Commission.

East - 5280'



CERTIFICATION

I hereby certify that the information contained herein is true and complete to the best of my knowledge and belief.

A. D. Bond

Name

A. D. Bond

Position

Regulatory
Engineering Coordinator

Company

Mobil Oil Corporation

Date

July 13, 1977

I hereby certify that the well location shown on this plat was plotted from field notes of actual surveys made by me or under my supervision, and that the same is true and correct to the best of my knowledge and belief.

Curtis A. Callaway

Date Surveyed

June 29, 1977

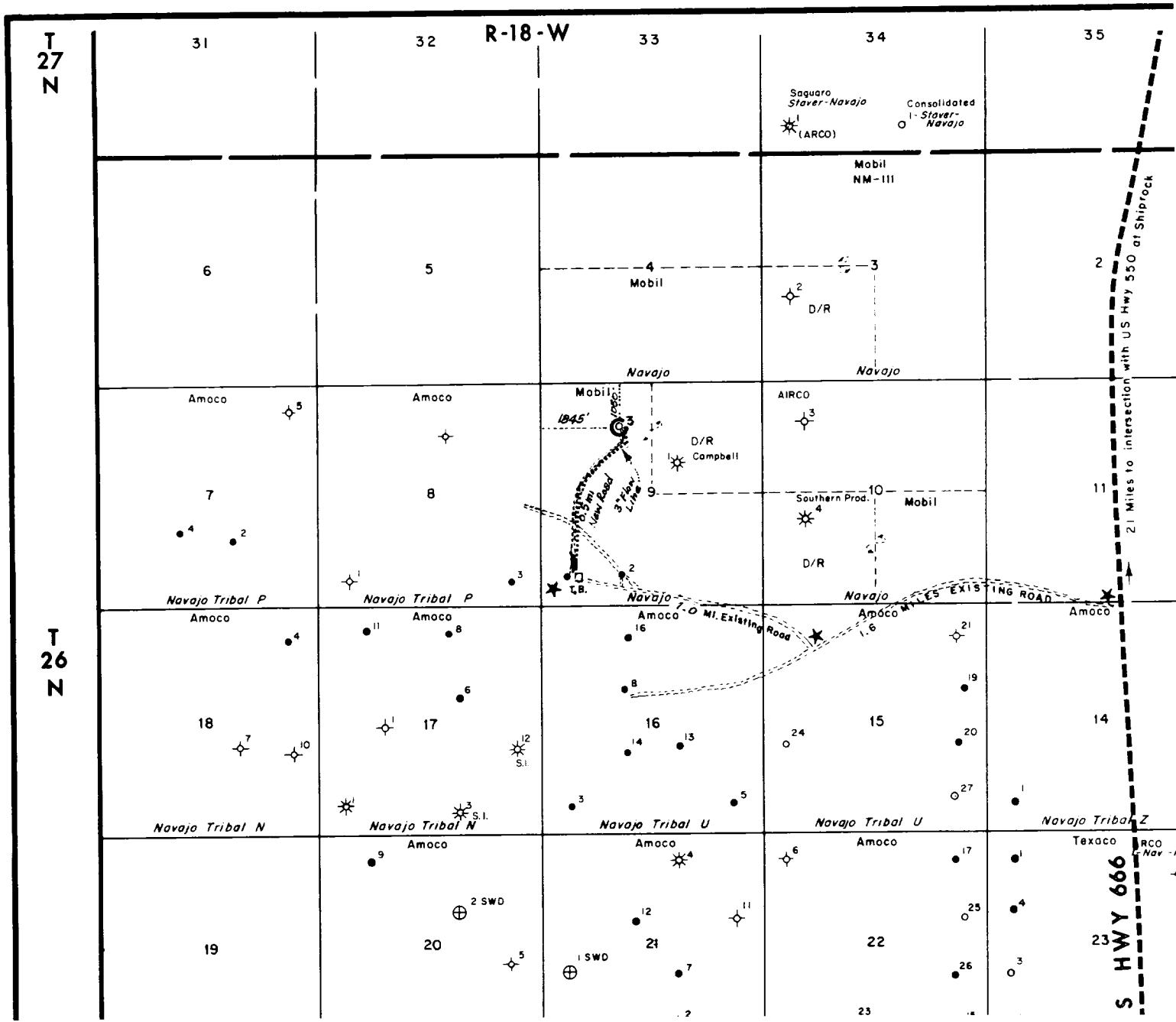
Registered Professional Engineer
and/or Land Surveyor

Curtis A. Callaway

Certificate No.

3342

N-00 03'W 5280'



COUNTY, NEW MEXICO T 26 N R 18 W MAP	
PENN "D" POOL & P Division Corporation	
Date 7/5/11 Drawn JVN Checked C. J. Approved Revised	Scale

36

1

12

13

24

25

36

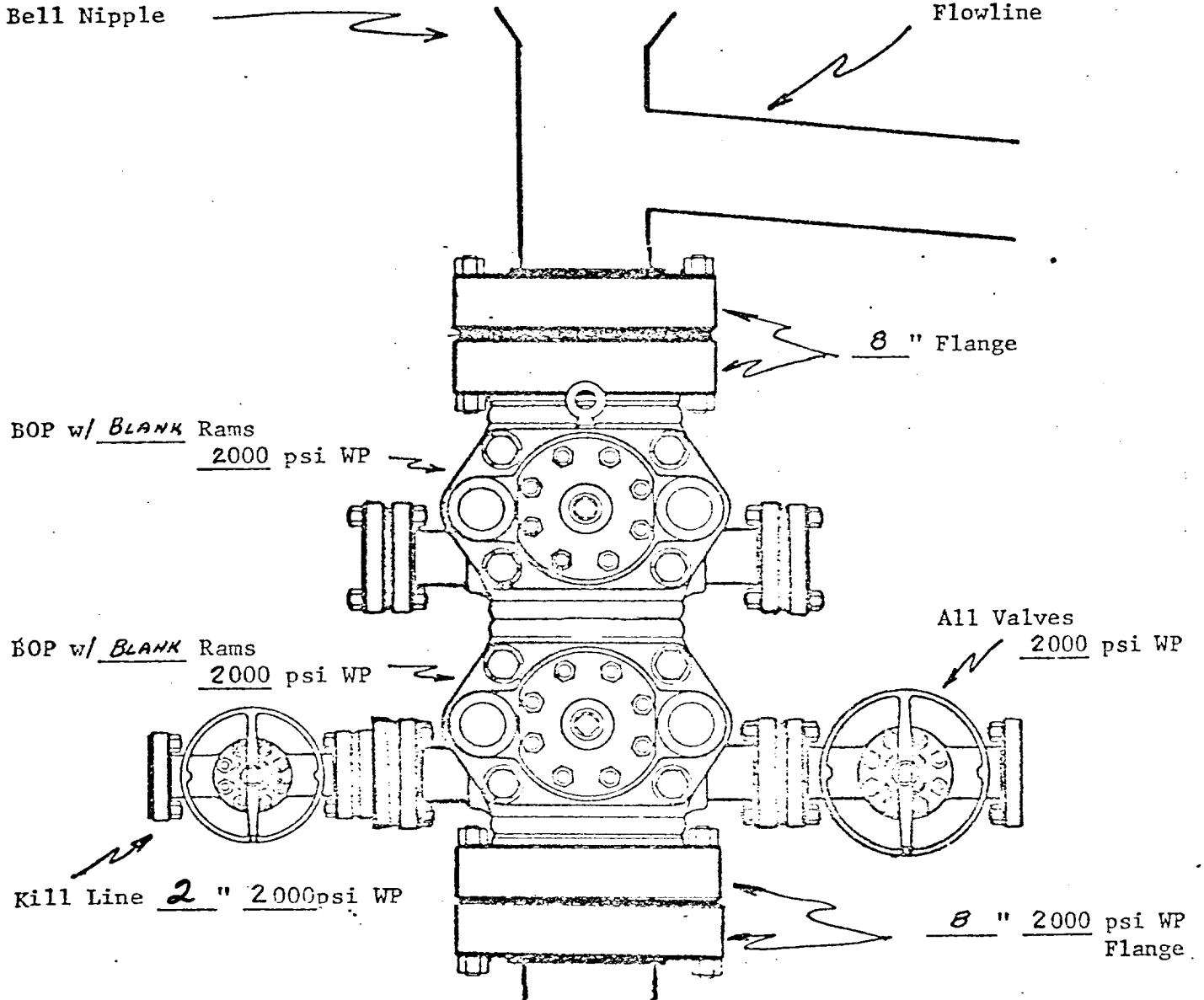
N.



49.

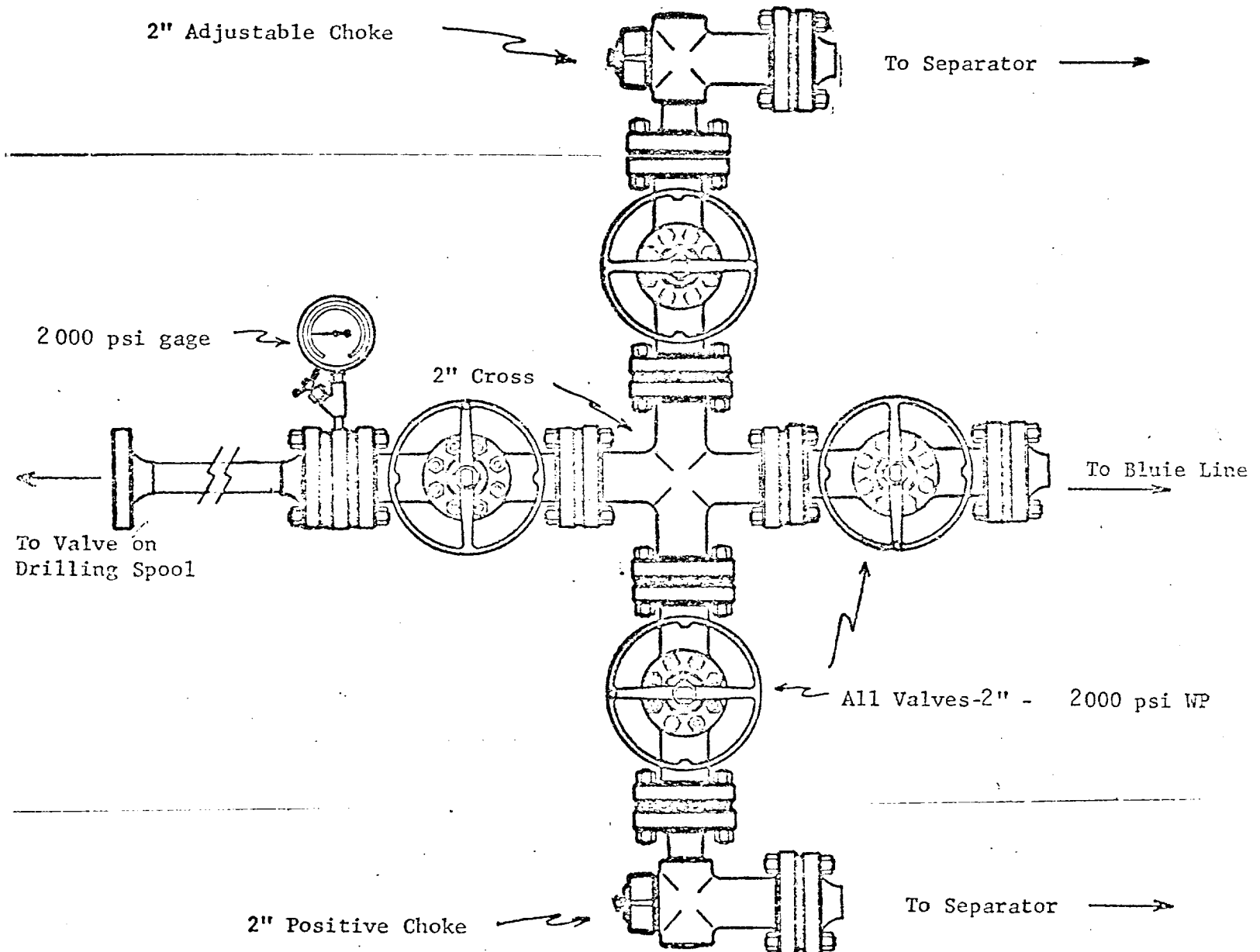
10

PROPOSED BOP STACK
8 5/8 " CASING



MOBIL OIL CORPORATION
WELL NAVAJO #3
San Juan COUNTY,
NEW MEXICO

PROPOSED CHOKE MANIFOLD
(MINIMUM REQUIREMENTS)
8-5/8 " CASING STRING



MOBIL OIL CORP.
WELL NAME & NO. Navajo, Well #3

San Juan COUNTY, New Mexico

(PROPOSED MUD PROGRAM (

FOR

MOBIL OIL CORPORATION'S

NAVAJO, WELL #3

TOCITO DOME PENNSYLVANIAN "D" POOL

SAN JUAN COUNTY, NEW MEXICO

DEPTH, FT.		TYPE MUD	WEIGHT	VISCOSITY	PH	WATER LOSS
FROM	TO					
0	1600'	Spud Mud		No Control	-	-
1600	6000'	Fresh wtr. w/gel & L.C.M. as necessary		No Control	-	-
6000'	T.D.	Fresh wtr. low solids gel	8.8-9.2	33-40	9	20 cc

MOBIL OIL CORPORATION
SURFACE USE PLAN
NAVAJO WELL #3

1050' FNL & 1845' FWL
SECTION 9, T-26-N, R-18-W
NEW MEXICO PRINCIPLE MERIDAN

SAN JUAN COUNTY, NEW MEXICO

1. EXISTING ROADS (See Attached Map "A")

An existing 18' wide graded road will be utilized to reach the location. This road leaves U.S. Highway No. 666 at a point about 21 miles south of Shiprock, New Mexico and about 2.6 miles from the proposed new road to the location. This road presently provides access to Mobil's Navajo Lease Wells #1 & #2.

2. PLANNED ACCESS ROADS (See Attached Map "A")

The proposed access road to the location site will be 12" wide X 0.5 miles long with a 12" deep borrow ditch each side. Leaving the existing lease road at the Navajo Tank Battery, the roads will slope gently (2-4%) for the first 0.4 miles and then traverse a hill with a slope of 6 to 8%. Native material will be graded, watered and compacted for the new roadway surface. The area crossed by the road is presently used for sparse sheep and cattle grazing.

3. LOCATION OF EXISTING WELLS

For Location of existing wells, see attached Map "A".

4. LOCATION OF TANK BATTERIES & PRODUCTION FACILITIES (See Attached Map "A").

Production from the proposed well will be transported to Mobil's Navajo Tank Battery by a 3" steel flow line to be constructed alongside the new access road on top of the ground.

5. WATER SUPPLY

Water for drilling purposes will be trucked from locations off-lease.

6. SOURCE OF CONSTRUCTION MATERIALS

No construction materials will be required for this project.

7. METHODS OF HANDLING WASTE DISPOSAL

All garbage and trash shall be burned when possible, and that portion that cannot be burned will be accumulated and buried with a minimum of 4' cover.

8. ANCILLARY FACILITIES

No ancillary facilities are planned at this time.

Mobil Oil Corporation
Surface Use Plan
Navajo Well #3

San Juan County, New Mexico

Page 2

9. WELL SITE LAYOUT

See Attached Plat "B"

10. PLANS FOR RESTORATION OF SURFACE

After well is completed and pits have sufficiently dried, they will be backfilled and shaped to original grade. All trash will be removed from the site or buried with a 4' minimum cover.

In the event well is abandoned, the location site and roads will be reshaped to original contour and re-seeded with seed mixture and soil additives as recommended by the Navajo Tribe. This restoration will begin within 90 days of date well is abandoned and will be completed within 30 days of that date.

11. OTHER INFORMATION

The location site located in a semi-desert area of gently rolling hills and ridges capped with sandstone. This site is located on one of these sandstone ridges with the sandstone formation exposed. The area is sandy with very sparse native grasses. The surface is owned by the Navajo Tribe and utilized for sparse grazing of goats, sheep and cattle. There are no occupied dwellings within one mile of the site, and no known archaeological, historical, or cultural sites are in the area.

12. LESSEE'S OR OPERATOR'S REPRESENTATIVE

Glen W. Barb
Mobil Oil Corporation
P. O. Box 633
Midland, TX 79702 - Telephone 915-684-8211

13. CERTIFICATION


I hereby certify that I, or persons under my direct supervision, have inspected the proposed drillsite and access route; that the statements made in this plan are, to the best of my knowledge,

Mobil Oil Corporation
Surface Use Plan
Navajo Well #3

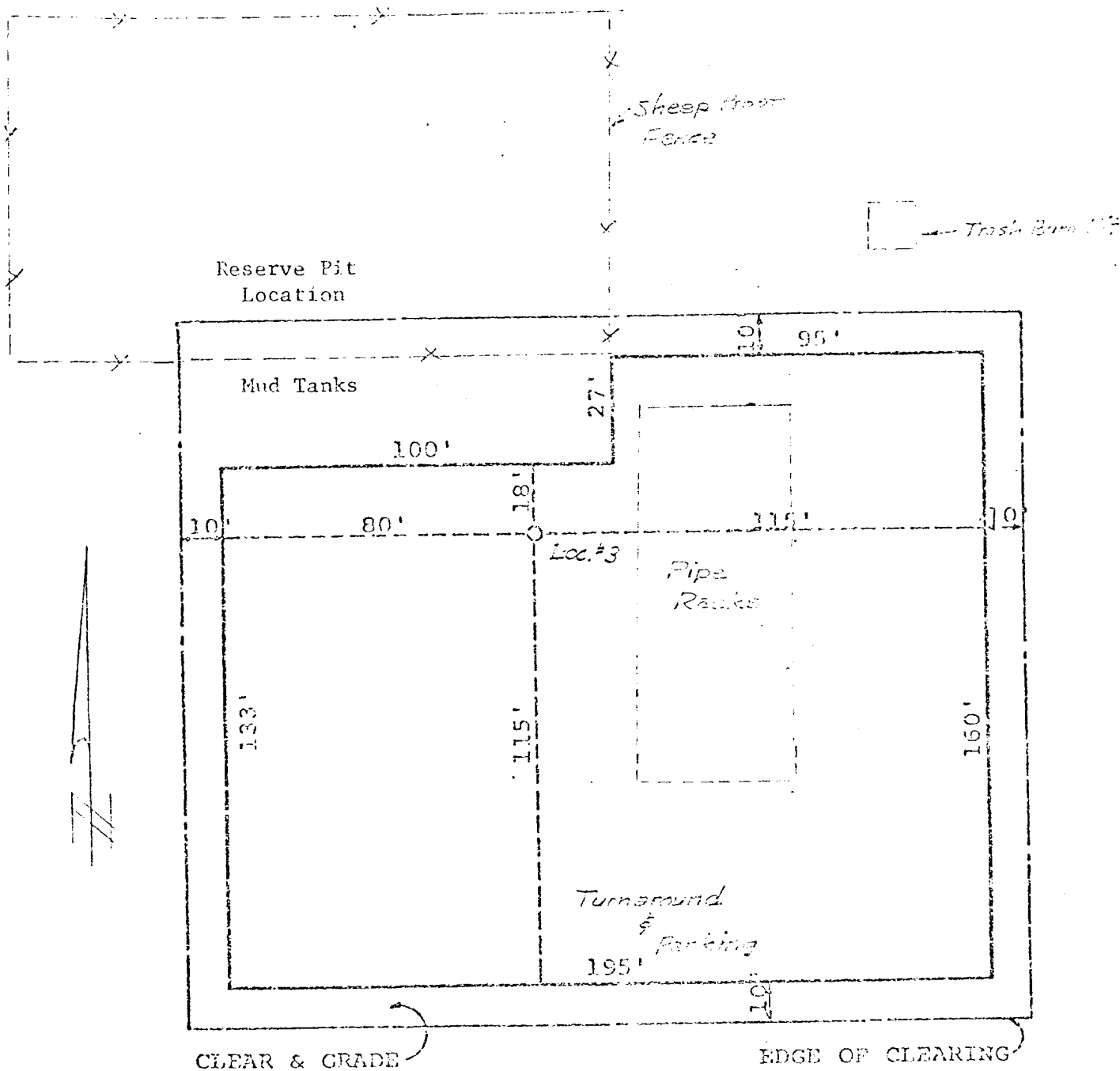
San Juan County, New Mexico

Page 3

true and correct; and that the work associated with the operations proposed herein will be performed by a reliable contractor in conformity with this plan and the terms and conditions under which it is approved.


Glen W. Barb
Operations Superintendent

CACallaway/tb
July 5, 1977



PLAT "B"

Navajo Lease, Well #3

NO.	DATE	BY	ALTERATION
STANDARD LOCATION PLAN 5000'-7000' DEEP WELLS ON STABLE SOIL			
MOBIL OIL CORPORATION MIDLAND, TEXAS			
DRAWN	CAC		DWG. NO.
CHECKED	J. A. L. 100		100

MOBIL OIL CORPORATION'S
NAVAJO LEASE, WELL #3
TOCITO DOME PENN "D" POOL
SAN JUAN COUNTY, NEW MEXICO

Ten Point Well Control & Resources Protection Data

1. Geological name of surface formation: Gallup
2. Estimated tops of important geological formations:

Dakota - 704'
Entrata - 2068'
Dechelly - 3655'
Hermosa - 5464'
Penn "D" - 6300'
3. Estimated depths at which water, oil, gas and other minerals are expected to be encountered:

a. The Dakota formation is water bearing.
b. The Penn D Zone is the only formation known to contain hydrocarbons.
4. New pipe will be used to drill this well as outlined in the drilling application.
5. Diagrammatic sketches of the blowout preventer system planned for this well are attached to the Form 9-331C.
6. The mud program, giving the type and characteristics of the drilling mud proposed, is attached to the Form 9-331C. A sufficient quantity of mud and chemicals will be maintained at the well site to meet anticipated normal conditions, recognizing the time required to replenish supplies from local sources.
7. The auxiliary equipment to be used will include: (1) Kelly cock; and (2) a sub with a full opening valve. We do not believe there will be need for a float at the bit on this unit.
8. Logging, Coring and Testing Program:

<u>Log</u>	<u>Depth</u>
Induction - sp	1600' - TD
Comp. - Neutron	1600' - TD

No coring will be done and only the Penn "D" Zone will be tested.

9. No abnormal pressures, temperatures or hazardous gases are expected to be encountered; however, prudent drilling operations will be maintained to guard against such possibilities.
10. It is anticipated that all necessary approvals will be obtained in order that drilling operations can commence by August 1, 1977. The duration of operations should not exceed 30 days.