

**NEW MEXICO OIL CONSERVATION COMMISSION
WELL LOCATION AND ACREAGE DEDICATION PLAT**

Form C-102
Supersedes C-128
Effective 1-1-65

All distances must be from the outer boundaries of the Section.

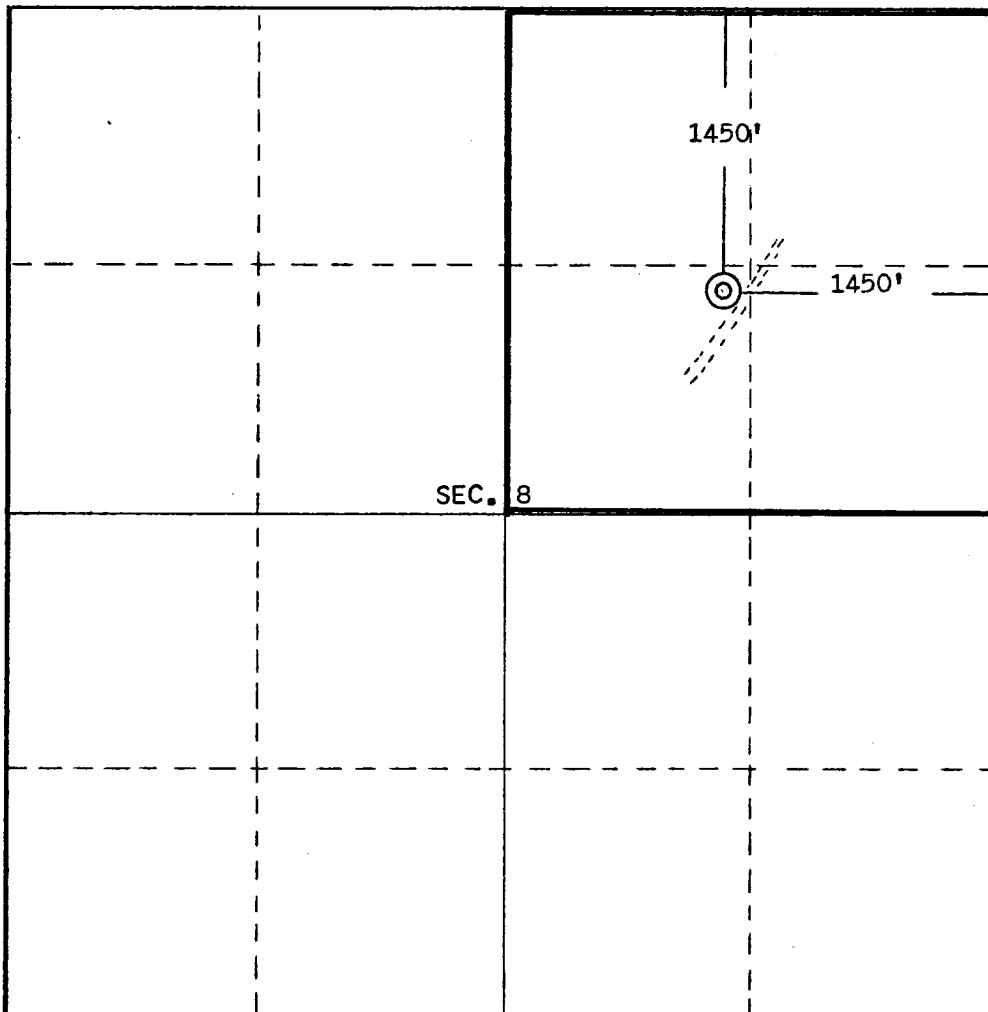
Operator Sanan Ltd. Bedford Incorporated			Lease (SF-081100-A) Ram		Well No. No. 1-B-11A
Unit Letter G	Section 8	Township 26 North	Range 12 West	County San Juan	
Actual Footage Location of Well: 1450 feet from the North line and 1450 feet from the East line					
Ground Level Elev. 5966	Producing Formation Pictured Cliffs		Pool WAW-Fruitland-Pict.Cliffs		Dedicated Acreage: 160 Acres

1. Outline the acreage dedicated to the subject well by colored pencil or hachure marks on the plat below.
2. If more than one lease is dedicated to the well, outline each and identify the ownership thereof (both as to working interest and royalty). **N.A.**
3. If more than one lease of different ownership is dedicated to the well, have the interests of all owners been consolidated by communitization, unitization, force-pooling, etc?

☐ Yes ☐ No If answer is "yes," type of consolidation _____

If answer is "no," list the owners and tract descriptions which have actually been consolidated. (Use reverse side of this form if necessary.) _____

No allowable will be assigned to the well until all interests have been consolidated (by communitization, unitization, forced-pooling, or otherwise) or until a non-standard unit, eliminating such interests, has been approved by the Commission. Acreage is dedicated to a gas purchase contract with El Paso Nat. Gas Co.



CERTIFICATION

I hereby certify that the information contained herein is true and complete to the best of my knowledge and belief.

Wm R. Speer
Name _____
Agent

Position
Consulting Geologist

Company
Sanan, Ltd.

Date
October 5, 1978

I hereby certify that the well location shown on this plat was plotted from field notes actual surveys made by me or under my supervision, and that the same is true and correct to the best of my knowledge and belief.



Date Surveyed
September 28, 1978

Registered Professional Engineer
and/or Land Surveyor

Edgar L. Risenhoover
Certificate No. **5979**
Edgar L. Risenhoover, L.S.

0 330 660 990 1320 1650 1980 2310 2640 2000 1500 1000 500 0