

UNITED STATES  
DEPARTMENT OF THE INTERIOR  
GEOLOGICAL SURVEY

30-045-23388

## APPLICATION FOR PERMIT TO DRILL, DEEPEN, OR PLUG BACK

## 1A. TYPE OF WORK

DRILL ☒DEEPEN ☐PLUG BACK ☐

## B. TYPE OF WELL

OIL  
WELL ☒GAS  
WELL ☐

OTHER

SINGLE  
ZONE ☐MULTIPLE  
ZONE ☐

## 2. NAME OF OPERATOR

Dome Petroleum Corp.

## 3. ADDRESS OF OPERATOR

501 Airport Drive, Suite 107, Farmington, New Mexico 87401

## 4. LOCATION OF WELL (Report location clearly and in accordance with any State requirements.)

At surface

2310' FSL &amp; 330' FEL

At proposed prod. zone

## 14. DISTANCE IN MILES AND DIRECTION FROM NEAREST TOWN OR POST OFFICE\*

25 Miles south of Farmington, New Mexico

## 15. DISTANCE FROM PROPOSED\*

LOCATION TO NEAREST  
PROPERTY OR LEASE LINE, FT. 2310  
(Also to nearest drg. unit line, if any)

## 16. NO. OF ACRES IN LEASE

2560

17. NO. OF ACRES ASSIGNED  
TO THIS WELL

2/80

18. DISTANCE FROM PROPOSED LOCATION\*  
TO NEAREST WELL, DRILLING, COMPLETED,  
OR APPLIED FOR, ON THIS LEASE, FT.

## 19. PROPOSED DEPTH

4800

## 20. ROTARY OR CABLE TOOLS

Rotary

## 21. ELEVATIONS (Show whether DF, RT, GR, etc.)

6051 GR

## 22. APPROX. DATE WORK WILL START\*

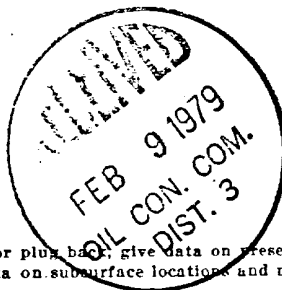
March 1, 1979

## 23.

## PROPOSED CASING AND CEMENTING PROGRAM

SIZE OF HOLE	SIZE OF CASING	WEIGHT PER FOOT	SETTING DEPTH	QUANTITY OF CEMENT
12 1/4"	8 5/8"	23#	200	150 Sacks Circulated
7 7/8"	4 1/2"	10.5#	4800	600 Sacks Circulated

Dome Petroleum Corp. proposes to drill a cretaceous test to 4800'. Completion will be determined from logs. A 10" 900 series Blowout Preventer will be used. The BOP will be tested to 500 psi before drilling surface plug. The Geologic name of the surface formation is Ojo Alamo. No abnormal temperatures or pressures are anticipated. Drilling should require approximately 9 days.



IN ABOVE SPACE DESCRIBE PROPOSED PROGRAM: If proposal is to deepen or plug back, give data on present productive zone and proposed new productive zone. If proposal is to drill or deepen directionally, give pertinent data on subsurface locations and measured and true vertical depths. Give blowout preventer program, if any.

## 24.

SIGNED

TITLE Drilling Foreman

DATE January 4, 1979

(This space for Federal or State office use)

PERMIT NO.

APPROVAL DATE

APPROVED BY

TITLE

DATE

CONDITIONS OF APPROVAL, IF ANY:

Valid C-104 for  
general use standard

YMMOCC

NEW MEXICO OIL CONSERVATION COMMISSION  
WELL LOCATION AND ACREAGE DEDICATION PLAT

Form C-102  
Supersedes C-128  
Effective 1-1-65

All distances must be from the outer boundaries of the Section.

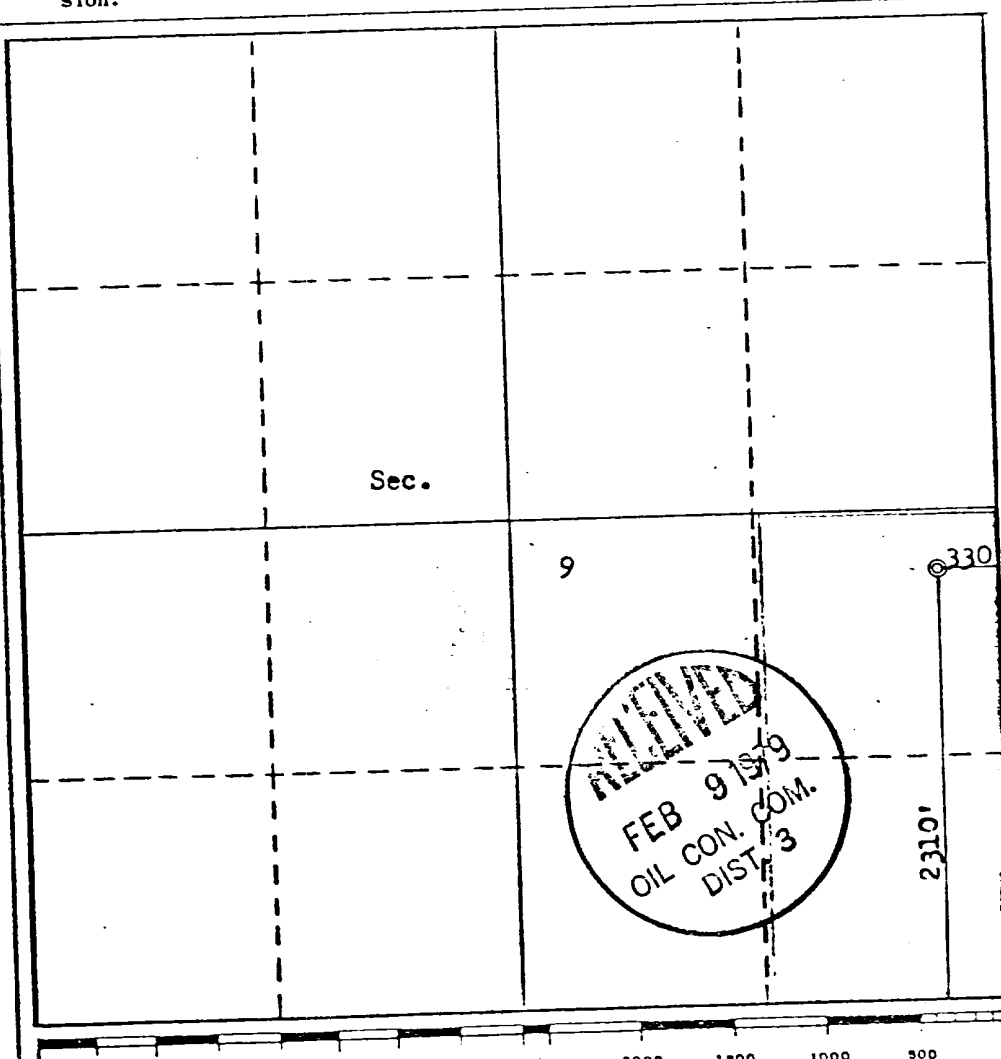
Operator <b>DOMO PETROLEUM CORPORATION</b>			Lease <b>OLD TRADING POST</b>		Well No. <b>3</b>
Unit Letter <b>I</b>	Section <b>9</b>	Township <b>26N</b>	Range <b>11W</b>	County <b>SAN JUAN</b>	
Actual Footage Location of Well: <b>2310</b> feet from the <b>South</b> line and <b>330</b> feet from the <b>East</b> line					
Ground Level Elev. <b>6051</b>	Producing Formation <b>Lower Gallup</b>		Pool <b>Bisti Lower Gallup</b> <i>ext</i>	Dedicated Acreage: <b>80</b> Acres	

1. Outline the acreage dedicated to the subject well by colored pencil or hatchure marks on the plat below.
2. If more than one lease is dedicated to the well, outline each and identify the ownership thereof (both as to working interest and royalty).
3. If more than one lease of different ownership is dedicated to the well, have the interests of all owners been consolidated by communitization, unitization, force-pooling, etc?

☐ Yes ☐ No If answer is "yes," type of consolidation \_\_\_\_\_

If answer is "no," list the owners and tract descriptions which have actually been consolidated. (Use reverse side of this form if necessary.) \_\_\_\_\_

No allowable will be assigned to the well until all interests have been consolidated (by communitization, unitization, forced-pooling, or otherwise) or until a non-standard unit, eliminating such interests, has been approved by the Commission.



CERTIFICATION

I hereby certify that the information contained herein is true and complete to the best of my knowledge and belief.

Name  
**H. D. Hollingsworth**  
Position  
**Drilling Foreman**  
Company  
**Dome Petroleum Corp.**  
Date  
**January 4, 1979**

I hereby certify that the well location shown on this plat was plotted from field notes of actual surveys made by me or under my supervision, and that the same is true and correct to the best of my knowledge and belief.

Date Surveyed  
**December 29, 1978**  
Registered Professional Engineer and/or Land Surveyor  
**Fred B. Kerr Jr.**  
Certificate No.  
**3950**

## DEVELOPMENT PLAN FOR SURFACE USE

Dome Old Trading Post 3

2310' FSL & 330' FEL Sec. 9, 26N, 14W

San Juan County, New Mexico

### 1. EXISTING ROADS

The main road to the location is that from Farmington toward Bisti, (Bisti Highway), leaving this road approximately 14 miles south of Farmington and using existing side roads to the location.

### 2. PLANNED ACCESS ROADS

The access road, to be routed as shown on the attached map, will be 18' wide with adequate ditch and water bars.

### 3. EXISTING WELLS

Existing wells within one mile of location are shown on the attached topographic map.

### 4. LOCATION OF PROPOSED FACILITIES

Development of commercial production will require separation facilities on the location pad. Equipment and pits will be fenced as required for protection of livestock and wildlife. Above ground facilities will be painted brown or grey to blend in with the surrounding area as specified by the BLM. The disturbed areas no longer needed for operations after well completion will be restored to natural contour and reseeded.

### 5. LOCATION AND TYPE OF WATER SUPPLY

To be hauled from the San Juan River, approximately 25 miles to the North.

### 6. SOURCE OF CONSTRUCTION MATERIALS

Not applicable.

### 7. METHOD OF HANDLING WASTE MATERIAL

All garbage and trash that can be burned shall be burned. All trash that cannot be burned will be contained in a trash pit and covered with a minimum of 24 inches of dirt. All drilling waste such as cuttings, overflows of oil, water, and drilling fluids will be contained in the reserve pit and buried with adequate cover upon completion of operations. The reserve pit will be fenced until clean up operations are commenced. Toilet facilities will be provided.

### 8. ANCILLARY FACILITIES

No camps or airstrips are proposed for this location.

9. WELL SITE LAYOUT

See attached diagram.

10. PLANS FOR RESTORATION OF SURFACE

Cleanup of the location will commence immediately following the removal of the drilling equipment. The reserve pit will be fenced until restoration operations are commenced. The location will be returned to original contour if the well is not productive. Both the road and location will be reseeded in accordance with BLM specifications.

11. OTHER INFORMATION

Topography consists of rolling hills with very sandy soil. Vegetation is composed of snake weed, morman tea, yucca, prickly pear, and blue gramma.

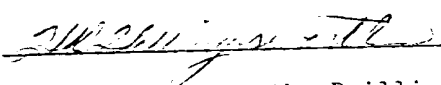
12. LEASEES' OR OPERATORS REPRESENTATIVE

Dome Petroleum Corp.  
H. D. Hollingsworth  
501 Airport Drive, Suite 107  
Farmington, New Mexico 87401  
Phone: 505-325-2897 Office  
505-327-1548 Home

13. CERTIFICATION

I hereby certify that I, or persons under my direct supervision have inspected the proposed drill site and access route; that I am familiar with the conditions which presently exist; that the statements in the plan are, to the best of my knowledge, true and correct; and that the work associated with the operations proposed herein will be performed by Dome Petroleum Corp. and its' contractors and sub-contractors in conformity with this plan and the terms and conditions under which it is approved.

January 4, 1979

  
H. D. Hollingsworth, Drilling Foreman  
Dome Petroleum Corp.

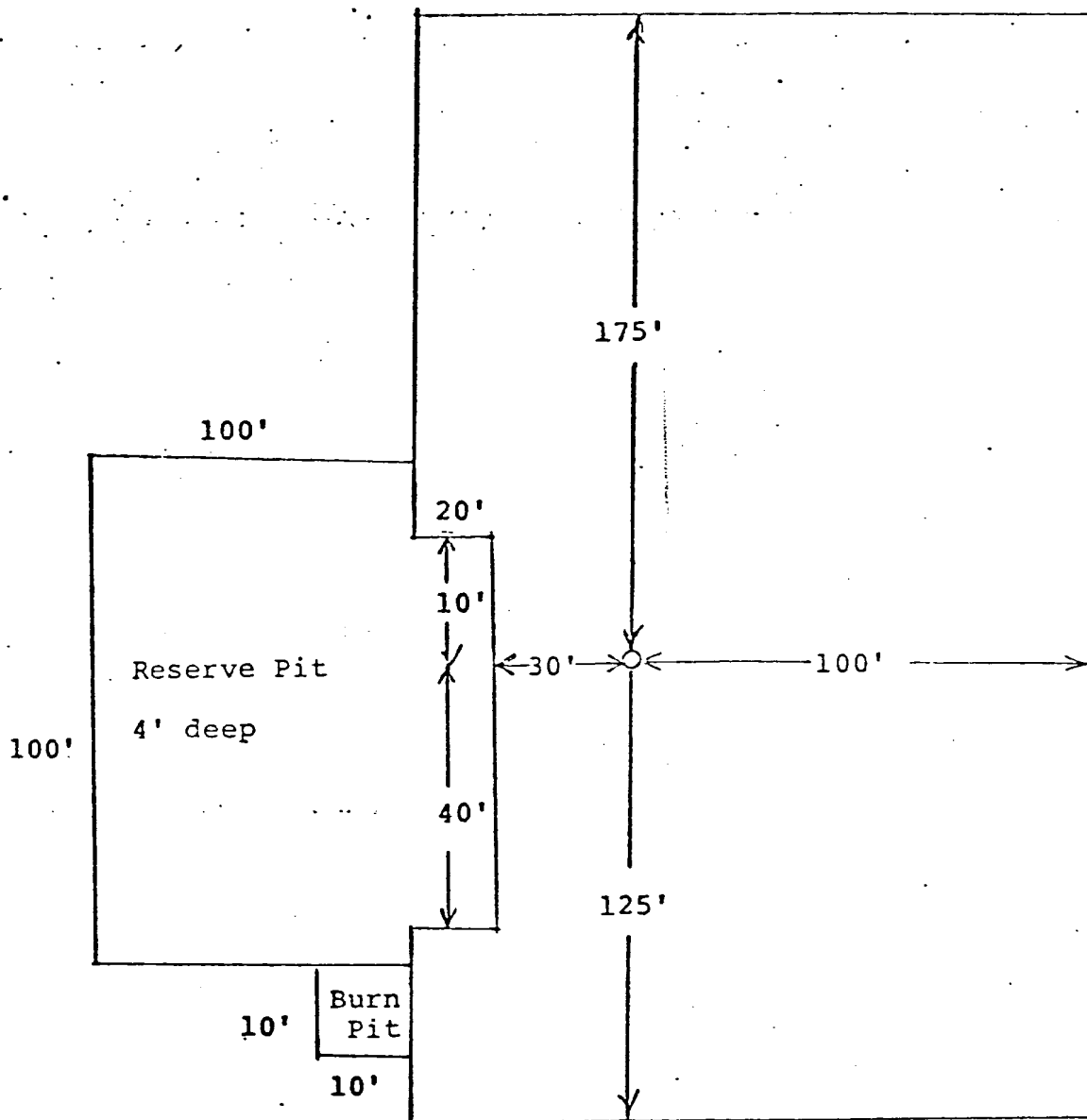
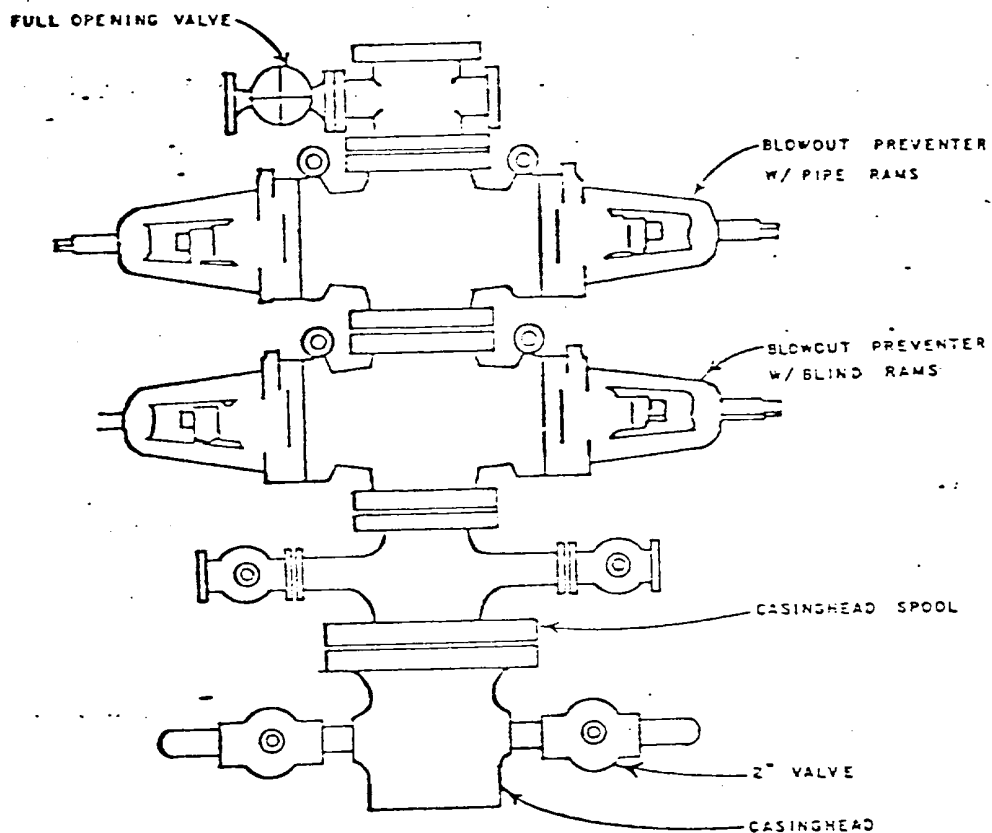


DIAGRAM OF WELL LOCATION



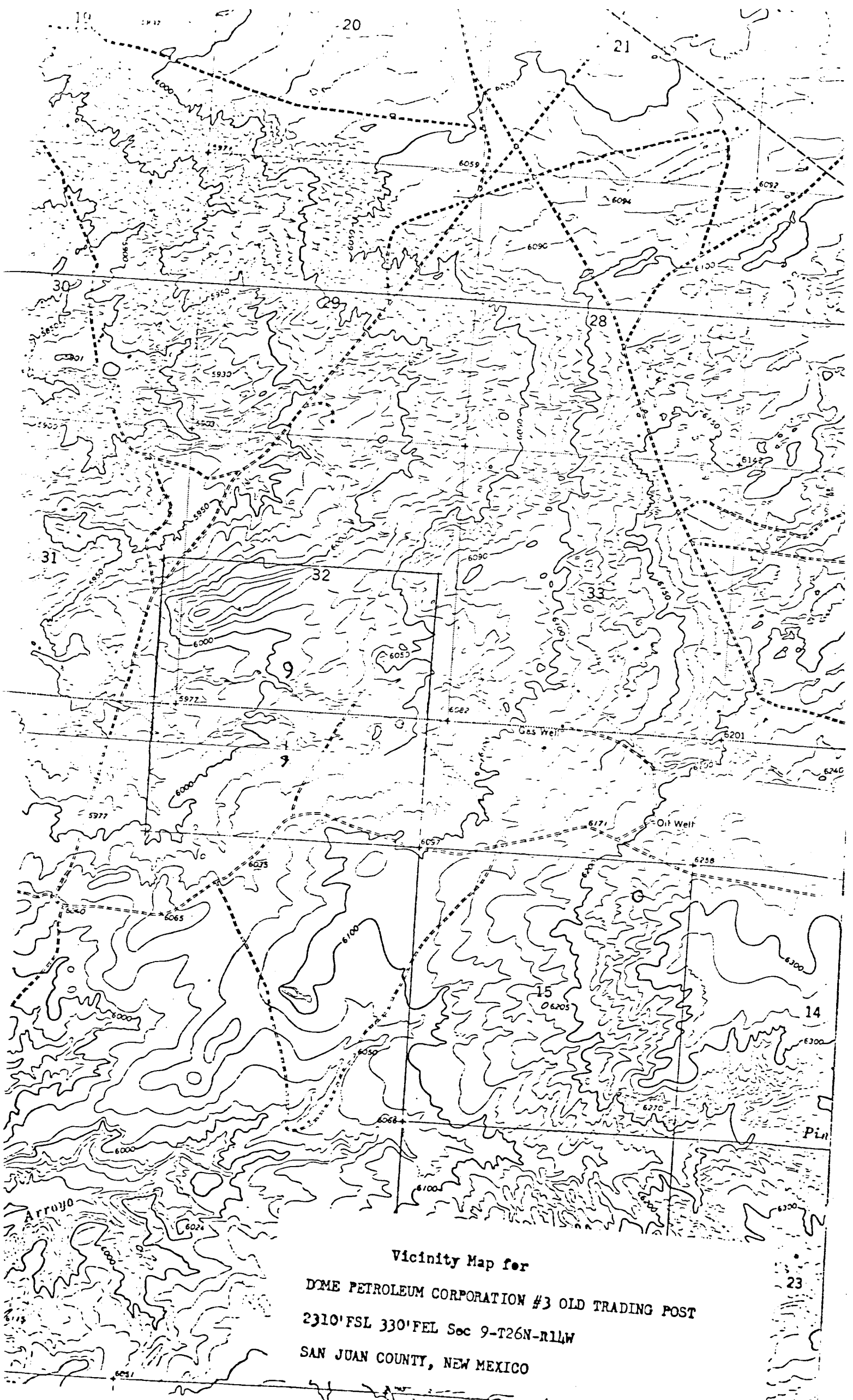
## DOME PETROLEUM CORP.

SUITE 1500, COLORADO STATE BANK BLDG.

1600 BROADWAY

DENVER, COLORADO 80202

STANDARD BLOWOUT PREVENTER ASSEMBLY  
10" 900 SERIES



Vicinity Map for  
DOME PETROLEUM CORPORATION #3 OLD TRADING POST  
2310' FSL 330' FEL Sec 9-T26N-R14W  
SAN JUAN COUNTY, NEW MEXICO