

UNITED STATES
DEPARTMENT OF THE INTERIOR
GEOLOGICAL SURVEY

APPLICATION FOR PERMIT TO DRILL, DEEPEN, OR PLUG BACK

1a. TYPE OF WORK

DRILL ☒DEEPEN ☐PLUG BACK ☐

b. TYPE OF WELL

OIL
WELL ☐GAS
WELL ☒OTHER ☐SINGLE
ZONE ☒MULTIPLE
ZONE ☐

2. NAME OF OPERATOR

~~J. Gregory Merrion & Robert L. Bayless~~

3. ADDRESS OF OPERATOR

P.O. Box 1541, Farmington, NM 87401

4. LOCATION OF WELL (Report location clearly and in accordance with any State requirements.)*

At surface

1450 FSL & 790 FEL

At proposed prod. zone

same

14. DISTANCE IN MILES AND DIRECTION FROM NEAREST TOWN OR POST OFFICE*

17 miles south of Farmington

15. DISTANCE FROM PROPOSED*

LOCATION TO NEAREST
PROPERTY OR LEASE LINE, FT.
(Also to nearest drlg. unit line, if any)

790 ft.

18. DISTANCE FROM PROPOSED LOCATION*
TO NEAREST WELL, DRILLING, COMPLETED,
OR APPLIED FOR, ON THIS LEASE, FT.

2650 ft.

16. NO. OF ACRES IN LEASE

1120

19. PROPOSED DEPTH

1375 ft.

17. NO. OF ACRES ASSIGNED
TO THIS WELL

160

20. ROTARY OR CABLE TOOL

Rotary

21. ELEVATIONS (Show whether DF, RT, GR, etc.)

6086

22. APPROX. DATE WORK WILL START*

On or before April 30, '7

23.

PROPOSED CASING AND CEMENTING PROGRAM

SIZE OF HOLE	SIZE OF CASING	WEIGHT PER FOOT	SETTING DEPTH	QUANTITY OF CEMENT
9-3/4"	7"	23 lb/ft	40 ft.	10 sacks
5"	2-7/8"	6.4 lb/ft	1375 ft.	150 sacks

Will drill 9-3/4" hole to 40 ft. and set 40 ft. of 7", 23 lb/ft casing with 10 sacks of cement. Will drill 5" hole to 1375 ft. and run open hole logs. If appears productive, will run 1375 ft. of 2-7/8", 6.4 lb/ft, J-55 casing and cement with 150 sacks. Will perforate and stimulate as required. Minimum specifications for pressure control equipment which is to be used - none required. Circulating medium will be clear water and natural mud with water loss control additives. The gas from this formation is not dedicated.

ESTIMATED TOPS

FORMATION

DEPTH

CONTENT

Ojo Alamo

30 ft.

Water

Kirtland

180 ft.

Fruitland

955 ft.

Pictured Cliffs

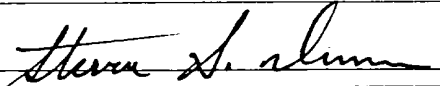
1270 ft.

Gas, Salt Water

IN ABOVE SPACE DESCRIBE PROPOSED PROGRAM: If proposal is to deepen or plug back, give data on present productive zone and proposed new productive zone. If proposal is to drill or deepen directionally, give pertinent data on subsurface locations and measured and true vertical depths. Give blowout preventer program, if any.

24.

SIGNED



TITLE

Engineer

DATE March 5, 1979

(This space for Federal or State office use)

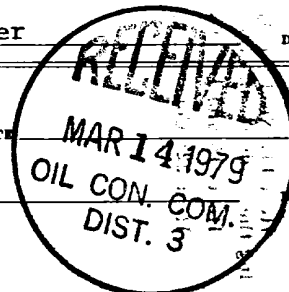
PERMIT NO.

APPROVAL DATE

APPROVED BY

TITLE

CONDITIONS OF APPROVAL, IF ANY:



*See Instructions On Reverse Side

NMOCC

**NEW MEXICO OIL CONSERVATION COMMISSION
WELL LOCATION AND ACREAGE DEDICATION PLAT**

Form C-102
Supersedes C-128
Effective 1-1-85

All distances must be from the outer boundaries of the Section.

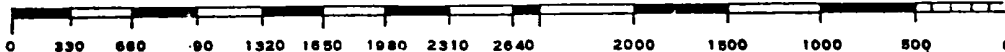
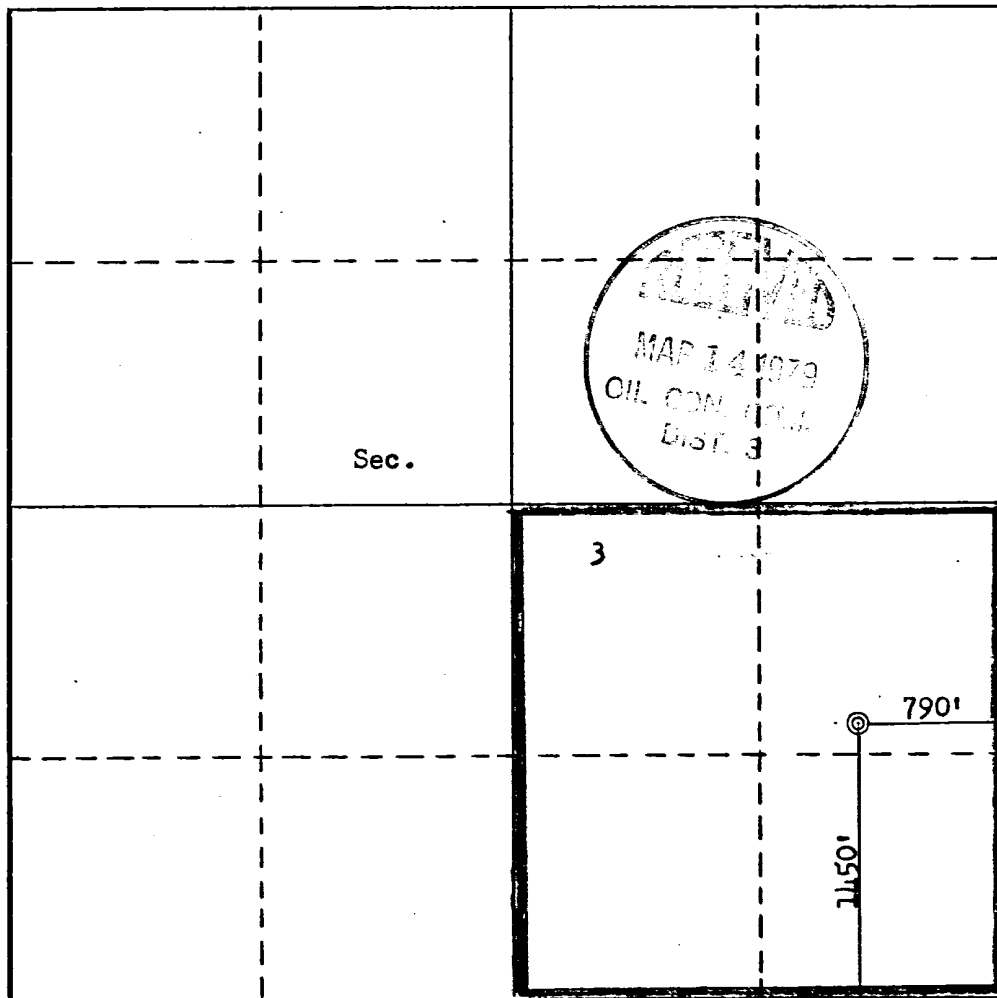
Operator MERRION & BAYLESS			Lease SOUTHLAND		Well No. 2
Unit Letter I	Section 3	Township 26N	Range 13W	County San Juan	
Actual Footage Location of Well: 1450 feet from the South line and 790 feet from the East line					
Ground Level Elev. 6087	Producing Formation Pictured Cliff		Pool WAW	Dedicated Acreage: 160 Acres	

1. Outline the acreage dedicated to the subject well by colored pencil or hachure marks on the plat below.
2. If more than one lease is dedicated to the well, outline each and identify the ownership thereof (both as to working interest and royalty).
3. If more than one lease of different ownership is dedicated to the well, have the interests of all owners been consolidated by communitization, unitization, force-pooling, etc?

☐ Yes ☐ No If answer is "yes," type of consolidation _____

If answer is "no," list the owners and tract descriptions which have actually been consolidated. (Use reverse side of this form if necessary.) _____

No allowable will be assigned to the well until all interests have been consolidated (by communitization, unitization, forced-pooling, or otherwise) or until a non-standard unit, eliminating such interests, has been approved by the Commission.



CERTIFICATION

I hereby certify that the information contained herein is true and complete to the best of my knowledge and belief.

Steven S. Dunn
Name

Steven S. Dunn

Position

Engineer

Company

Merrion & Bayless

Date

March 5, 1979

I hereby certify that the well location shown on this plat was plotted from field notes of actual surveys made by me or under my supervision, and that the same is true and correct to the best of my knowledge and belief.

Date Surveyed

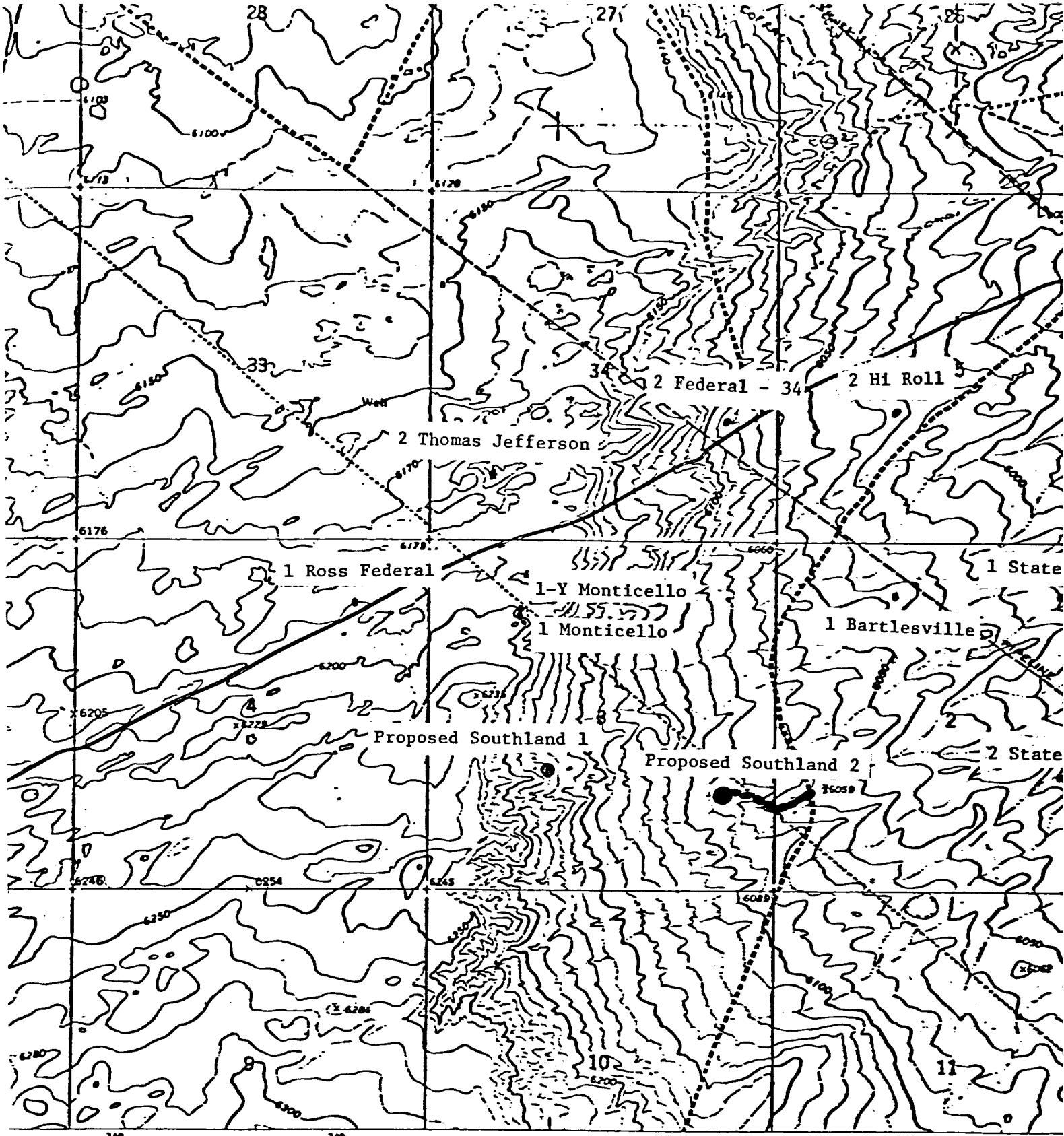
March 2, 1979

Registered Professional Engineer
and/or Land Surveyor

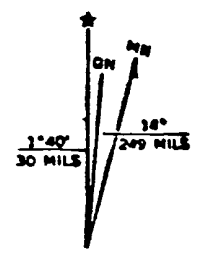
Fred B. Kerr Jr.
Fred B. Kerr Jr.

Certificate No. **3950**

3950



The Geological Survey
 Bureau of Reclamation
 is from aerial
 ble surveys of the
 ecked by USGS 1965
 ican datum
 oordinate system,
 or grid ticks,



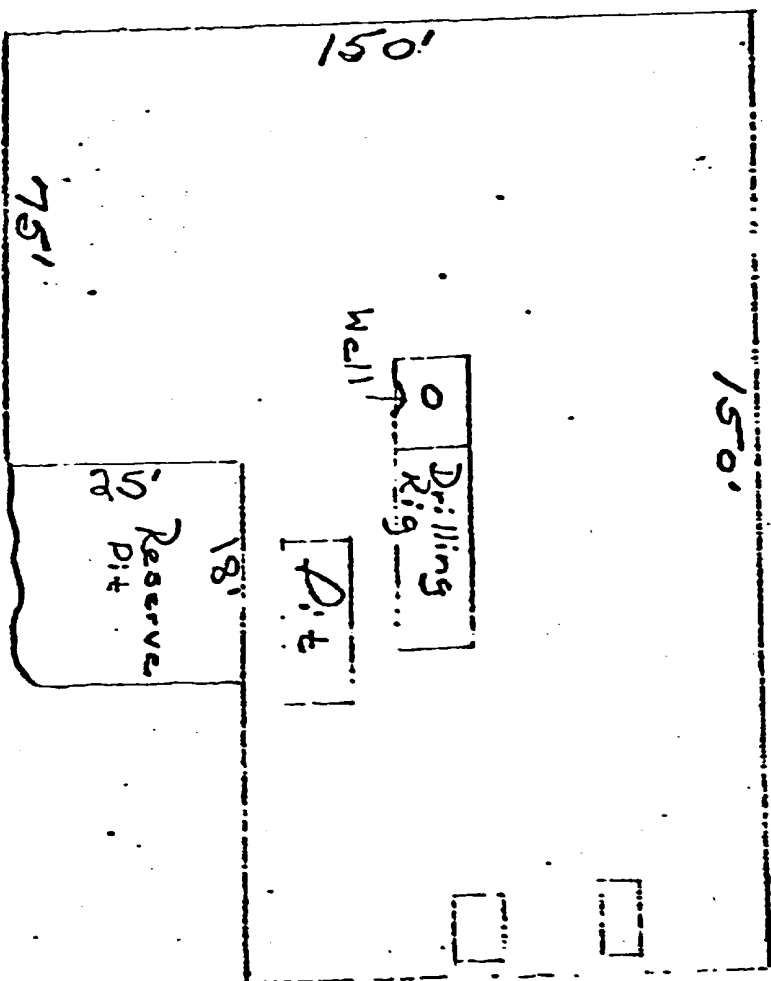
Vicinity Map for
 MERRION & BAYLESS #2 SOUTHLAND
 1450'FSL 790'FEL Sec 3-T26N-R13W
 SAN JUAN COUNTY, NEW MEXICO

NCISCO WASHO
 4356 I. NW
 SCALE 1:24000
 0
 3000 4000
 0
 INTERVAL 10 FEET
 S MEAN SEA LEVEL

LOCATION AND EQUIPMENT LAY-OUT

MERRION & BAYLESS

Southland #2
Section 3, T26N, R13W
San Juan County, New Mexico



Latrine
2' x 4' x 4' deep

Burn Pit
8' x 12' x 4' deep

↑
NORTH

NO LOCATION LEVELING
WORK DONE - DRIVE-IN
TRUCK RIG USED.

SURFACE USE AND OPERATIONS PLAN

MERRION & BAYLESS
Southland #2
Section 3, T26N, R13W

- 1 & 2. A topographical map is attached showing location of drillsite and access roads to location; new roads are color coded on the location map. The terrain is relatively flat and no improvements are planned on existing roads. A drive in truck mounted drilling rig will be used and will be driven in to the location with our road work. Our planned access road will be twelve feet in width, and will follow the existing terrain. No turnouts, culverts or cuts and fills are anticipated on the proposed access. In addition, natural drainage and surfacing material will be used.
3. Wells within one mile radius are shown on the topographical map.
4. A. Existing facilities owned or controlled by the Operator and shown on the attached map are as follows: Wellheads
B. No new facilities are contemplated.
C. Disturbed areas will be reseeded per BLM specifications.
5. A. Water will be hauled from the San Juan River.
B. Truck will haul water on proposed access route shown.
6. No construction materials will be used.
7. Methods of disposal of waste materials:
A. Cuttings will be buried in drilling pit.
B. Drilling fluids will be buried in drilling pit.
C. No produced fluids are anticipated.
D. Sewage will be buried.
E. Garbage and other waste material will be buried.
F. Operator will clean up, fill, and level pits and reseed location per BLM specifications.
8. No ancillary facilities.
9. Wellsite layout attached.
10. Restoration of drillsite — pits will be filled and leveled and reseeded per BLM specifications immediately after completion.
11. Other information: The lease is on Navajo Tribal surface land. The drillsite is fairly level, arid land with very little vegetation. There is no other surface use or facilities existent. An archeological survey statement will be furnished.
12. Operator representative: Robert L. Bayless (505) 325-5093
P.O. Box 1541
Farmington, NM 87401
13. Certification:

I hereby certify that I, or persons under my direct supervision, have inspected the proposed drillsite and access route; that I am familiar with the conditions which presently exist; that the statements made in this plan are, to the best of my knowledge, true and correct; and, that the work associated with the operations proposed herein will be performed by Merrion & Bayless and its contractors and subcontractors in conformity with this plan and the terms and conditions under which it is approved.

Mar 5 79
Date

Steven S. Dunn
STEVEN S. DUNN
Engineer
Merrion & Bayless