

UNITED STATES
DEPARTMENT OF THE INTERIOR
GEOLOGICAL SURVEY

30-045-23537

APPLICATION FOR PERMIT TO DRILL, DEEPEN, OR PLUG BACK

1a. TYPE OF WORK

DRILL ☒

DEEPEN ☐

PLUG BACK ☐

b. TYPE OF WELL

OIL
WELL ☐

GAS
WELL ☒

OTHER

SINGLE
ZONE ☒

MULTIPLE
ZONE ☐

2. NAME OF OPERATOR

DOMO PETROLEUM CORP.

3. ADDRESS OF OPERATOR

501 Airport Drive, Suite 107, Farmington, New Mexico 87401

4. LOCATION OF WELL (Report location clearly and in accordance with any State requirements.)*

At surface

790' FSL, 1840 FWL

At proposed prod. zone

14. DISTANCE IN MILES AND DIRECTION FROM NEAREST TOWN OR POST OFFICE*

25 MILES SOUTH OF FARMINGTON, NEW MEXICO

15. DISTANCE FROM PROPOSED*

LOCATION TO NEAREST
PROPERTY OR LEASE LINE, FT.
(Also to nearest drlg. unit line, if any)

16. NO. OF ACRES IN LEASE

960

17. NO. OF ACRES ASSIGNED

TO THIS WELL

160

18. DISTANCE FROM PROPOSED LOCATION*
TO NEAREST WELL, DRILLING, COMPLETED,
OR APPLIED FOR, ON THIS LEASE, FT.

19. PROPOSED DEPTH

1500'

20. ROTARY OR CABLE TOOLS

ROTARY

21. ELEVATIONS (Show whether DF, RT, GR, etc.)

6106 GR

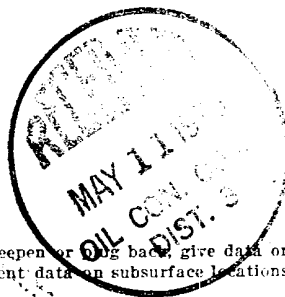
22. APPROX. DATE WORK WILL START*

5/15/79

23. PROPOSED CASING AND CEMENTING PROGRAM

SIZE OF HOLE	SIZE OF CASING	WEIGHT PER FOOT	SETTING DEPTH	QUANTITY OF CEMENT
9 7/8"	7"	20#	40'	35 SACKS
5"	2 7/8"	6.5#	1500'	DETERMINED FROM CALIPER

Dome Petroleum Corp. proposes to drill a Cretaceous test to 1500'. Completion will be determined from logs. A 6" 600 Series Blowout Preventer will be used. The BOP will be tested to 500 psi before drilling surface plug. The geologic name of the surface formation is Ojo Alamo. No abnormal temperatures or pressures are anticipated. Drilling should require approximately 4 days.



IN ABOVE SPACE DESCRIBE PROPOSED PROGRAM: If proposal is to deepen or plug back, give data on present productive zone and proposed new productive zone. If proposal is to drill or deepen directionally, give pertinent data on subsurface locations and measured and true vertical depths. Give blowout preventer program, if any.

24.

SIGNED

H. D. HOLINGSWORTH

TITLE

DRILLING FOREMAN

DATE May 4, 1979

(This space for Federal or State office use)

PERMIT NO.

APPROVAL DATE

APPROVED BY

TITLE

DATE

CONDITIONS OF APPROVAL, IF ANY:

OK

NMOCC

OIL CONSERVATION DIVISION

STATE OF NEW MEXICO
ENERGY AND MINERALS DEPARTMENTP. O. BOX 2088
SANTA FE, NEW MEXICO 87501Form C-102
Revised 10-1-78

All distances must be from the outer boundaries of the Section.

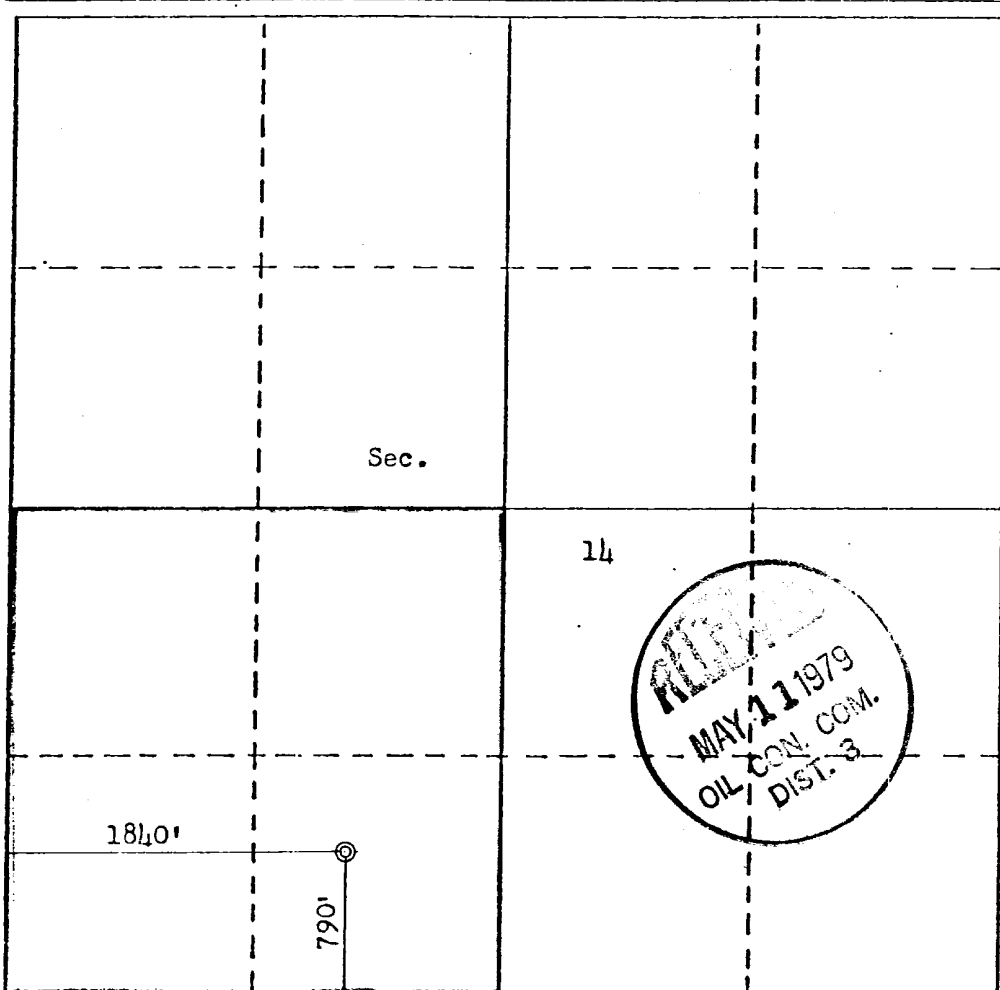
Operator DOMESTIC PETROLEUM CORPORATION			Lease DOMESTIC-FEDERAL 14-26-13		Well No. 14
Unit Letter N	Section 14	Township 26N	Range 13W	County San Juan	
Actual Footage Location of Well:					
790	feet from the South	line and	1840	feet from the West	line
Ground Level Elev. 6106	Producing Formation PICTURED CLIFF		Pool W. A. W. Smithland W. A. W. Smithland	Dedicated Acreage: 160 Acres	

1. Outline the acreage dedicated to the subject well by colored pencil or hachure marks on the plat below.
2. If more than one lease is dedicated to the well, outline each and identify the ownership thereof (both as to working interest and royalty).
3. If more than one lease of different ownership is dedicated to the well, have the interests of all owners been consolidated by communitization, unitization, force-pooling, etc?

☐ Yes ☐ No If answer is "yes," type of consolidation _____

If answer is "no," list the owners and tract descriptions which have actually been consolidated. (Use reverse side of this form if necessary.) _____

No allowable will be assigned to the well until all interests have been consolidated (by communitization, unitization, forced-pooling, or otherwise) or until a non-standard unit, eliminating such interests, has been approved by the Division.



CERTIFICATION

I hereby certify that the information contained herein is true and complete to the best of my knowledge and belief.

H. D. Hollingsworth
Name

H. D. HOLLINGSWORTH

Position

DRILLING FOREMAN

Company

DOMESTIC PETROLEUM CORP.

Date

May 4, 1979

I hereby certify that the well location shown on this plat was plotted from field notes of actual surveys made by me or under my supervision, and that the same is true and correct to the best of my knowledge and belief.

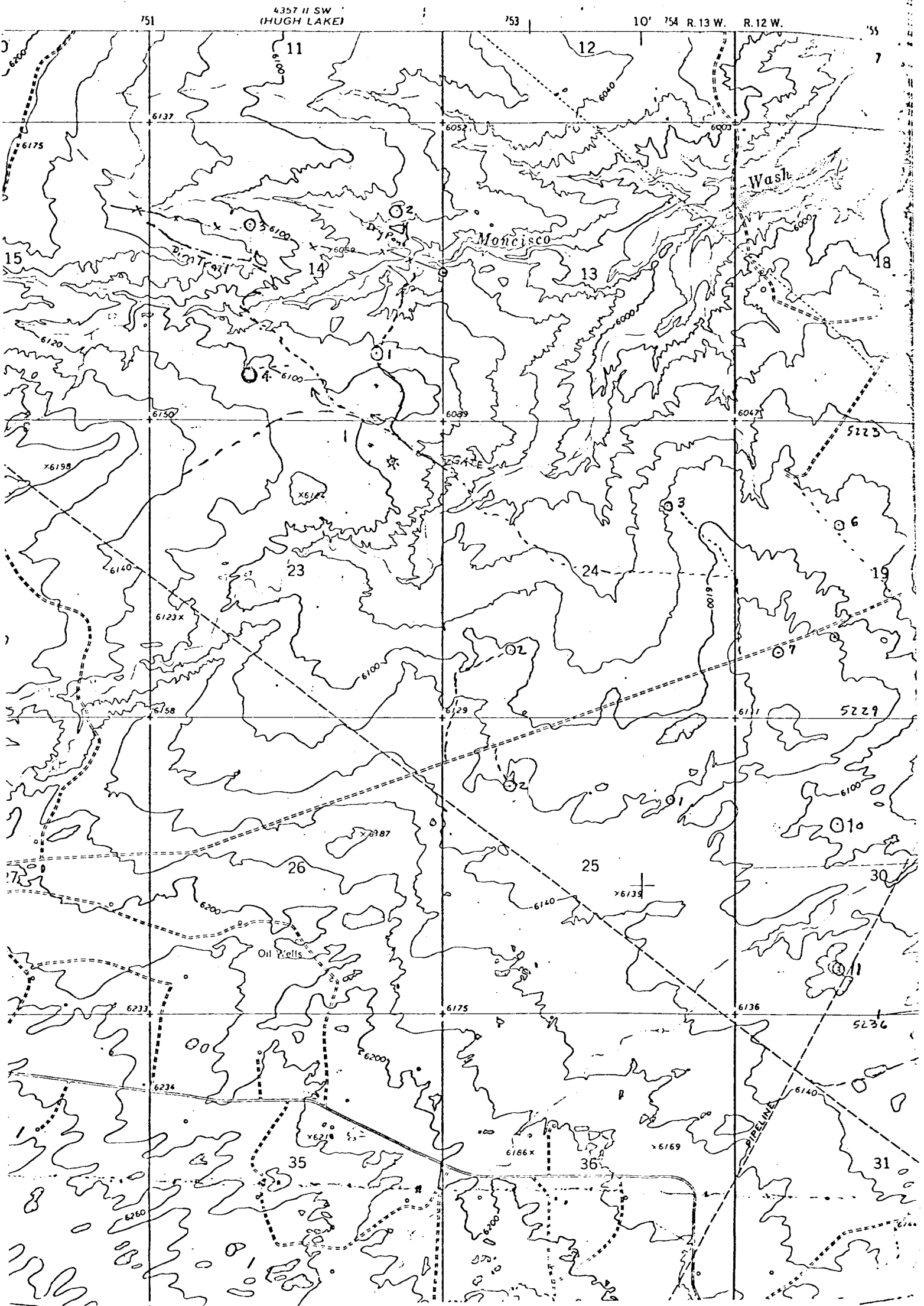
Date Surveyed

May 2, 1979

Registered Professional Engineer and/or Land Surveyor

Frederic B. Kerr
Frederic B. Kerr, Jr.

Certification No. 3950



Vicinity Map for
DOME PETROLEUM CORP. #4 DOME-FEDERAL 14-26-13
790' FSL 1840' FWL Sec 14-T26N-R13W
SAN JUAN COUNTY, NEW MEXICO



E. C. GENT
VICE PRESIDENT

DOME PETROLEUM CORP.

SUITE 1500, COLORADO STATE BANK BLDG.

1600 BROADWAY

DENVER, COLORADO 80202

TELEPHONE
(303) 861-1230

DEVELOPMENT PLAN FOR SURFACE USE

Dome Federal 14-26-13 #4
790' FSL, 1840' FWL
Sec. 14, T26N, R13W
San Juan County, NM

1. EXISTING ROADS

The main road to the location is that from Farmington toward Bisti (Bisti Highway), leaving this road approximately 23 miles south of Farmington and using existing side roads to the location.

2. PLANNED ACCESS ROADS

The access road, to be routed as shown on the attached map, will be 18' wide with adequate ditch and water bars.

3. EXISTING WELLS

Existing wells within one mile of location are shown on the attached topographic map.

4. LOCATION OF PROPOSED FACILITIES

Development of commercial gas production will require separation facilities on the location pad. Equipment and pits will be fenced as required for protection of livestock and wildlife. Above ground facilities will be painted brown or grey to blend in with the surrounding area as specified by the BLM. The disturbed areas no longer needed for operations after well completion will be restored to natural contour and reseeded.

5. LOCATION AND TYPE OF WATER SUPPLY

To be hauled from El Paso Natural Gas Co. water pit at Chaco Gas Plant, approximately 3 miles east.

6. SOURCE OF CONSTRUCTION MATERIALS

Not applicable.

7. METHOD OF HANDLING WASTE MATERIAL

All garbage and trash that can be burned shall be burned. All trash that cannot be burned will be contained in a trash pit and covered with a minimum of 24 inches of dirt. All drilling waste such as cuttings, overflows of oil, water and drilling fluids will be contained in the reserve pit and buried with adequate cover upon completion of operations. The reserve pit will be fenced until cleanup operations are commenced. Toilet facilities will be provided.

8. ANCILLARY FACILITIES

No camps or airstrips are proposed for this location.

9. WELL SITE LAYOUT

See attached diagram.

10. PLANS FOR RESTORATION OF SURFACE

Cleanup of the location will commence immediately following the removal of the drilling equipment. The reserve pit will be fenced until restoration operations are commenced. The location will be returned to original contour if the well is not productive. Both the road and location will be reseeded in accordance with BLM specifications.

11. OTHER INFORMATION

Topography consists of rolling hills with very sandy soil. Vegetation is composed of Snake Weed, Mormon Tea, Yucca, Prickly Pear and Blue Gramma.

12. LEASEE'S OR OPERATOR'S REPRESENTATIVE

Dome Petroleum Corporation
H. D. Hollingsworth
501 Airport Drive, Suite 107
Farmington, New Mexico 87401
Phone: 505-325-2897 Office
505-327-1548 Home

13. CERTIFICATION

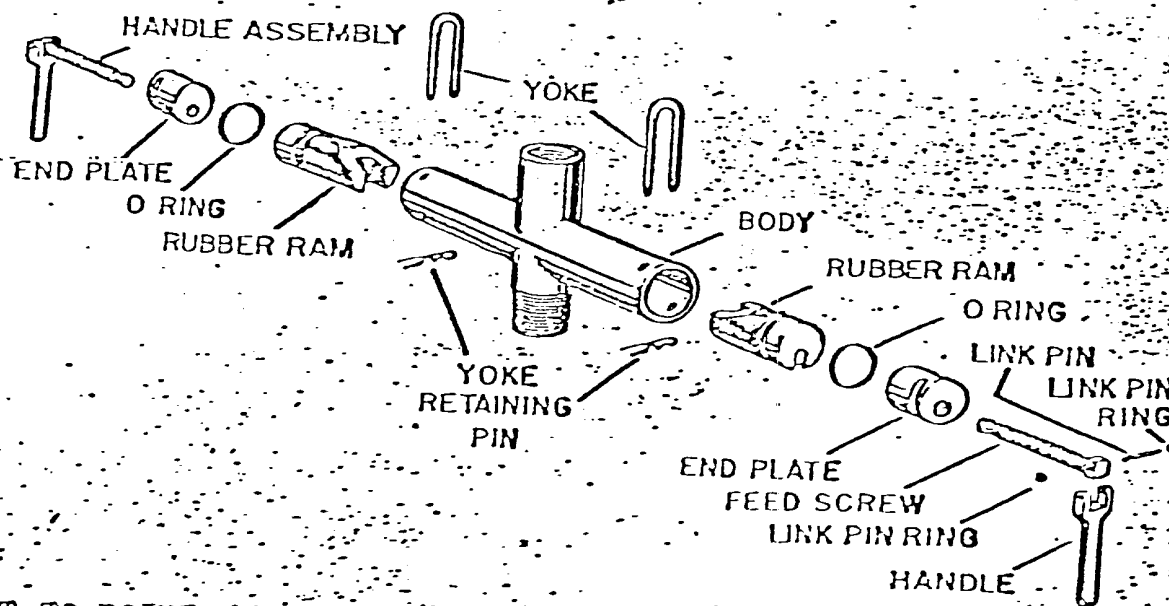
I hereby certify that I, or persons under my direct supervision have inspected the proposed drill site and access route; that I am familiar with the conditions which presently exist; that the statements made in the plan are, to the best of my knowledge, true and correct; and that the work associated with the operations proposed herein will be performed by Dome Petroleum Corporation and its contractors and sub-contractors in conformity with this plan and the terms and conditions under which it is approved.

May 4, 1979

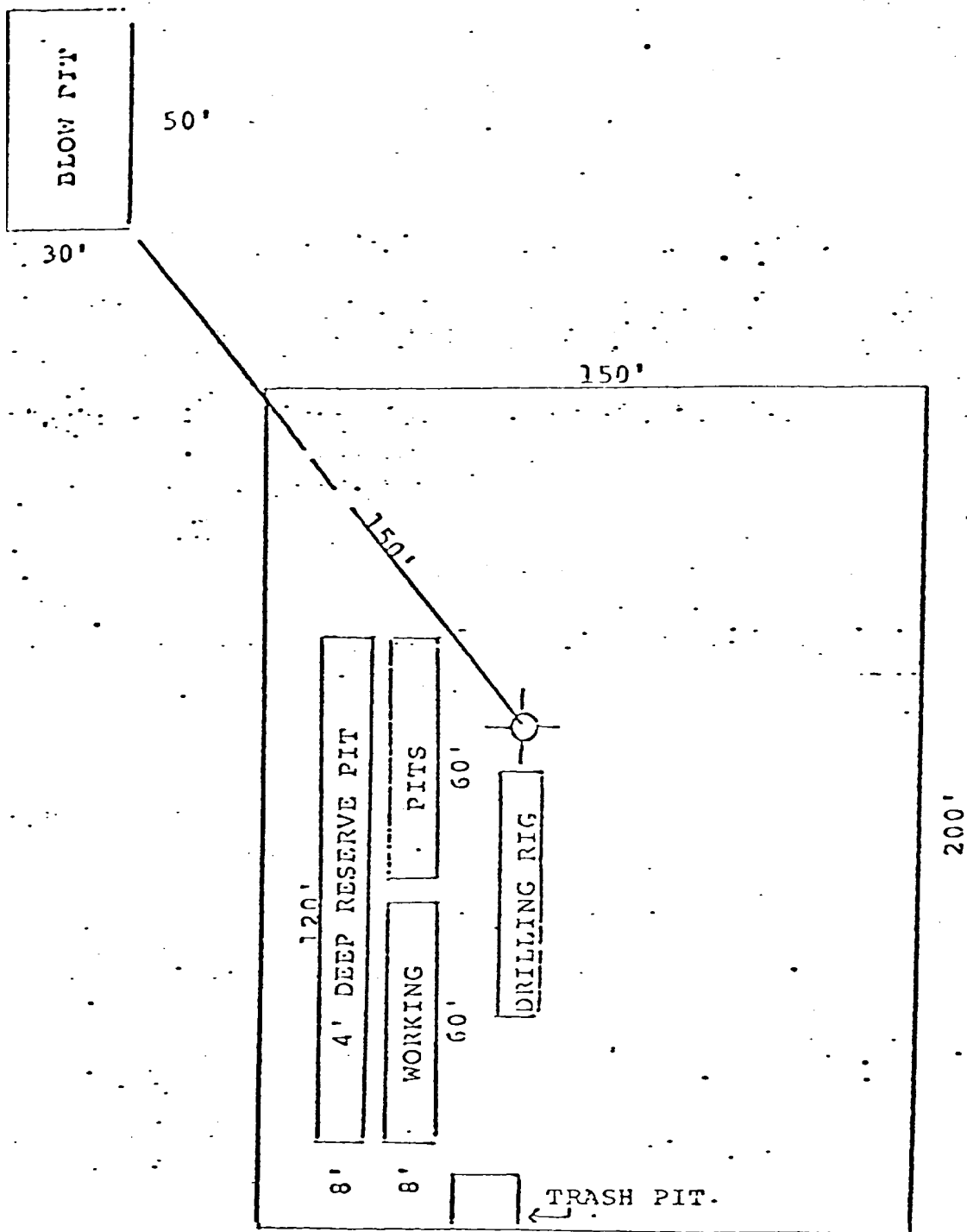
HDH/clp

H. D. HOLLINGSWORTH, DRILLING FOREMAN
Dome Petroleum Corporation

BLOWOUT PREVENTERS



CEMENT TO POINT 5
SERIES 6" 600



· DOME PETROLEUM CORP.

SUITE 1500, COLORADO STATE BANK BLDG.

1600 BROADWAY

· DENVER, COLORADO 80202