

UNITED STATES
DEPARTMENT OF THE INTERIOR
GEOLOGICAL SURVEY

APPLICATION FOR PERMIT TO DRILL, DEEPEN, OR PLUG BACK

1a. TYPE OF WORK

DRILL ☒DEEPEN ☐PLUG BACK ☐

b. TYPE OF WELL

OIL
WELL ☐GAS
WELL ☒OTHER ☐SINGLE
ZONE ☒MULTIPLE
ZONE ☐

2. NAME OF OPERATOR

ODESSA NATURAL CORPORATION Attn: John Strojek

3. ADDRESS OF OPERATOR

P. O. Box 3908 Odessa, Texas 79760

4. LOCATION OF WELL (Report location clearly and in accordance with any State requirements.)

At surface

1100' FSL, 990' FEL

At proposed prod. zone

Same

14. DISTANCE IN MILES AND DIRECTION FROM NEAREST TOWN OR POST OFFICE*

Not Applicable

15. DISTANCE FROM PROPOSED*

LOCATION TO NEAREST

PROPERTY OR LEASE LINE, FT.

(Also to nearest drlg. unit line, if any)

990'

16. NO. OF ACRES IN LEASE

--

17. NO. OF ACRES ASSIGNED

TO THIS WELL

320

18. DISTANCE FROM PROPOSED LOCATION*
TO NEAREST WELL, DRILLING, COMPLETED,
OR APPLIED FOR, ON THIS LEASE, FT.

1900'

19. PROPOSED DEPTH

6286'

20. ROTARY OR CABLE TOOLS

Rotary

21. ELEVATIONS (Show whether DF, RT, GR, etc.)

6228' GL, 6241' DF, 6242' KB

22. APPROX. DATE WORK WILL START*

9/20/79

23.

PROPOSED CASING AND CEMENTING PROGRAM

SIZE OF HOLE	SIZE OF CASING	WEIGHT PER FOOT	SETTING DEPTH	QUANTITY OF CEMENT
12-1/4"	8-5/8"	24.0	250	250 sacks
7-7/8"	4-1/2"	10.50	6286'	To be determined

It is proposed to drill this well with rotary tools, using water base mud as circulation medium, through the Dakota Formation. Possible productive zones in the Dakota Formation will be completed. Production casing will be cemented in such a manner as to protect the Gallup, Mesa Verde and Pictured Cliffs Formations.

Estimated Formation Tops

Pictured Cliffs	1512'	Green horn	5872'
Cliff House	2385'	Graneros	5972'
Gallup	4992'	Dakota	6069'

The E/2 Section 8 is dedicated to this well.
The natural gas produced from this well is committed.

IN ABOVE SPACE DESCRIBE PROPOSED PROGRAM: If proposal is to deepen or plug back, give data on present productive zone and proposed new productive zone. If proposal is to drill or deepen directionally, give pertinent data on subsurface locations and measured and true vertical depths. Give blowout preventer program, if any.

24. FOR: ODESSA NATURAL CORPORATION

President, Walsh Engr.
& Prod. Corp.

SIGNED

Ewell N. Walsh, P.E.

TITLE

DATE

7/11/79

(This space for Federal or State office use)

PERMIT NO.

APPROVAL DATE

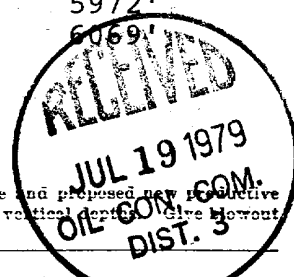
APPROVED BY

TITLE

DATE

CONDITIONS OF APPROVAL, IF ANY:

*See Instructions On Reverse Side



All distances must be from the outer boundaries of the Section.

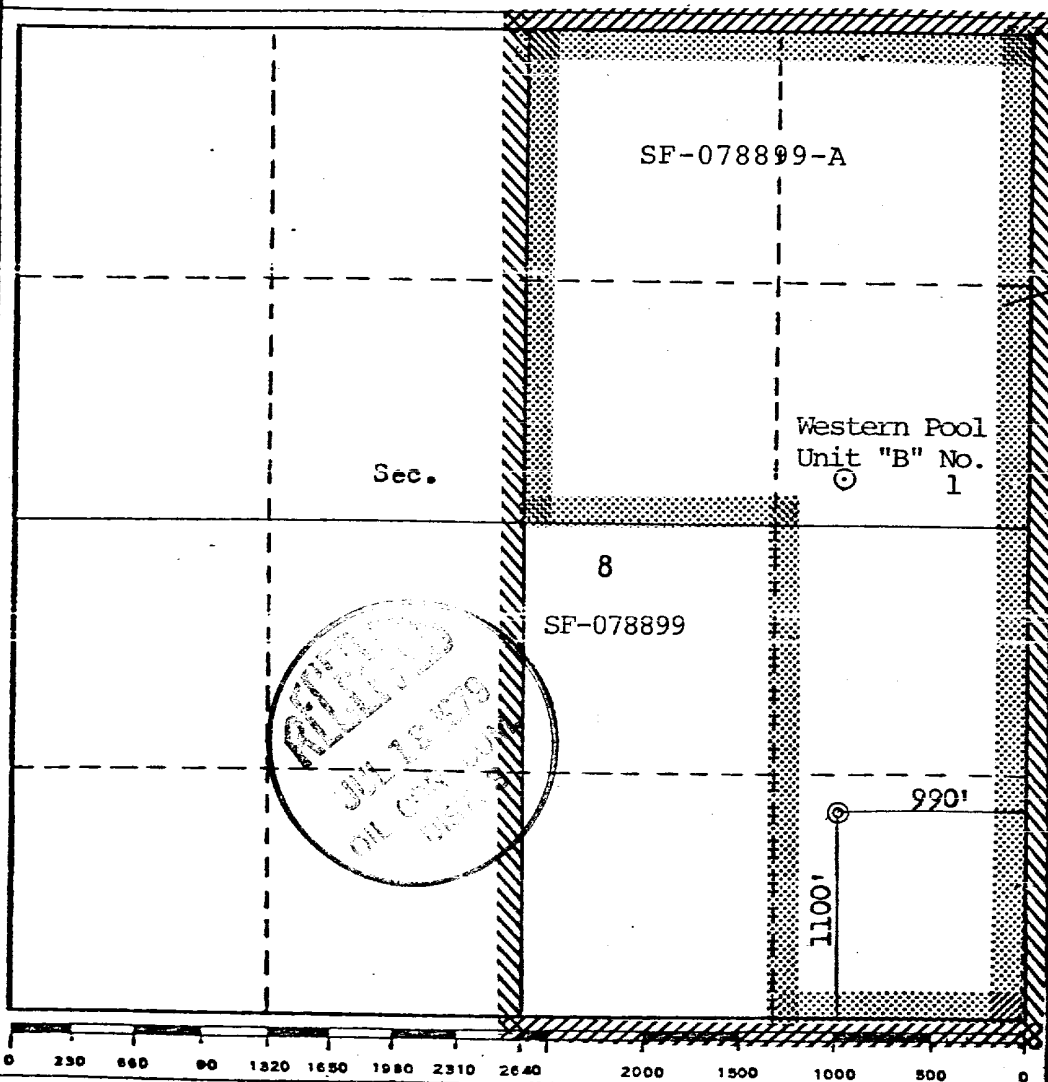
Operator ODESSA NATURAL CORPORATION			Lease WESTERN POOL UNIT "B"		Well No. 1-E
Unit Letter P	Section 8	Township 26N	Range 11W	County San Juan	
Actual Footage Location of Well: 1100 feet from the South line and 990 feet from the East line					
Ground Level Elev. 6228	Producing Formation Dakota		Pool Basin Dakota		Dedicated Acreage: 320 Acres

1. Outline the acreage dedicated to the subject well by colored pencil or hatchure marks on the plat below.
2. If more than one lease is dedicated to the well, outline each and identify the ownership thereof (both as to working interest and royalty). Ownership (Working interest and royalty) same for both leases.
3. If more than one lease of different ownership is dedicated to the well, have the interests of all owners been consolidated by communitization, unitization, force-pooling, etc?

☒ Yes ☐ No If answer is "yes," type of consolidation Communitization

If answer is "no," list the owners and tract descriptions which have actually been consolidated. (Use reverse side of this form if necessary.)

No allowable will be assigned to the well until all interests have been consolidated (by communitization, unitization, forced-pooling, or otherwise) or until a non-standard unit, eliminating such interests, has been approved by the Commission.



CERTIFICATION

I hereby certify that the information contained herein is true and complete to the best of my knowledge and belief.
For: ODESSA NATURAL CORP.

Name Ewell N. Walsh
Position Ewell N. Walsh, P.E.
Company President, Walsh Engr. & Prod.
Date 7/11/79 Corp.

I hereby certify that the well location shown on this plat was plotted from field notes of actual surveys made by me or under my supervision, and that the same is true and correct to the best of my knowledge and belief.

Date Surveyed June 28, 1979
Registered Professional Engineer and/or Land Surveyor [Signature]
Certificate No. 3950

DEVELOPMENT PLAN

ODESSA NATURAL CORPORATION
WESTERN POOL UNIT "B" NO. 1-E
1100'FSL, 990'FEL, Section 8-T26N-R11W
San Juan County, New Mexico

1. Existing roads shown on attached plat.
2. Planned access from existing road is approximately 1100' to new location.
3. Location - See Above.
4. No additional well is planned on this lease at this time.
5. Production equipment or storage facilities proposed for the well will be installed on location.
6. Water to be obtained from Thriftway Water Well, NW/4, Section 26-T27N-R11W.
7. Waste materials will be buried on location or in reserve pit.
8. No permanent camp is planned. A trailer house will be used on location during drilling process.
9. No airstrip is proposed.
10. See attached plat for layout.
11. Pits will be filled, location cleaned up, and area not in use for producing well will be reseeded.

DEVELOPMENT PLAN

12. Lessee's or operator's representative.


Ewell N. Walsh: 327-4892; Radio Dispatch 325-1873, Car 620
Address: P.O. Box 254, Farmington, New Mexico 87401

13; CERTIFICATION:

I hereby certify that I, or persons under my direct supervision, have inspected the proposed drillsite and access route; that I am familiar with the conditions which presently exist; that the statements made in this plan are, to the best of my knowledge, true and correct; and, that the work associated with the operations proposed herein will be performed by: _____

ODESSA NATURAL CORPORATION

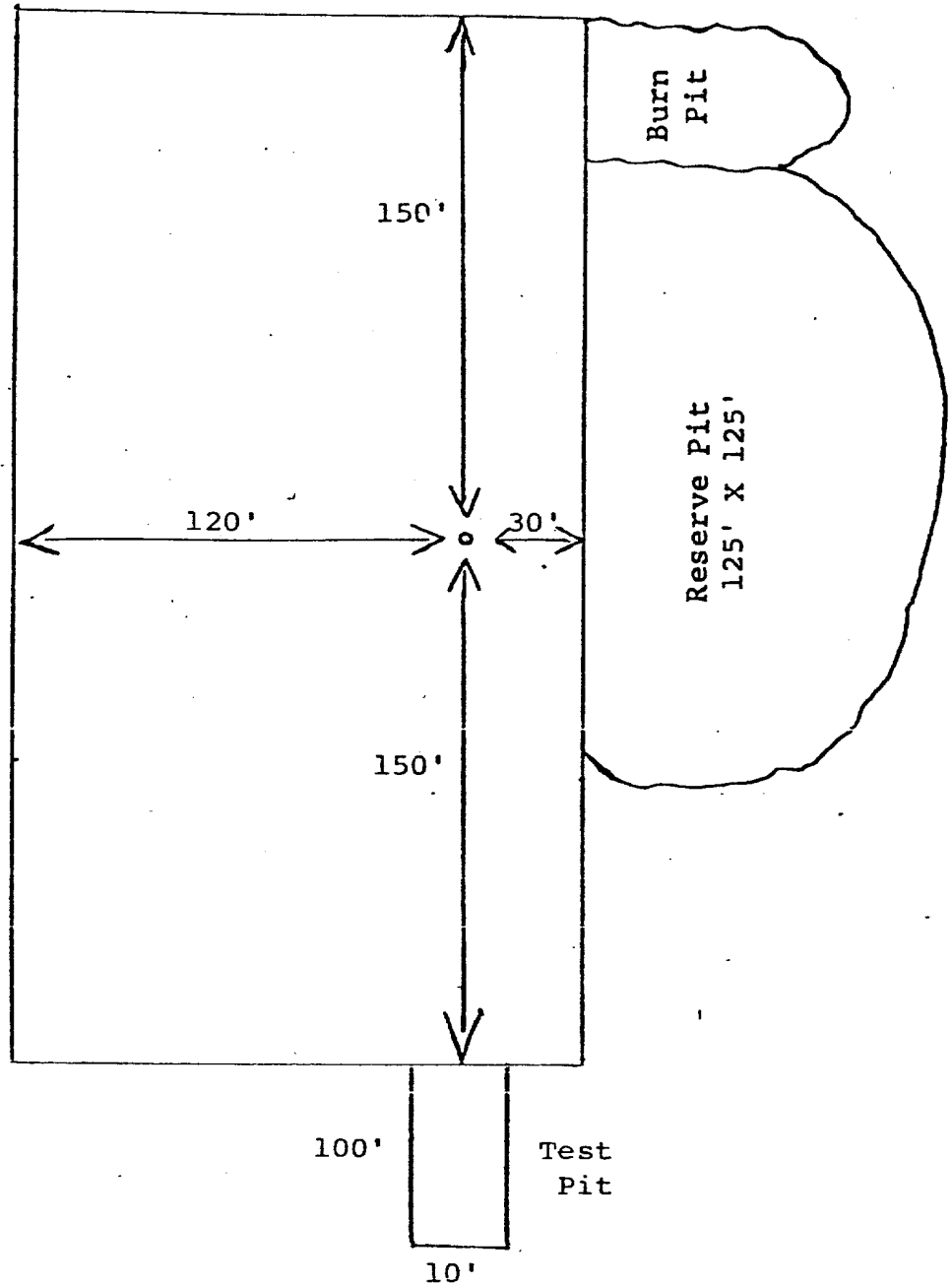
and its contractors and subcontractors in conformity with this plan and the terms and conditions under which it is approved.

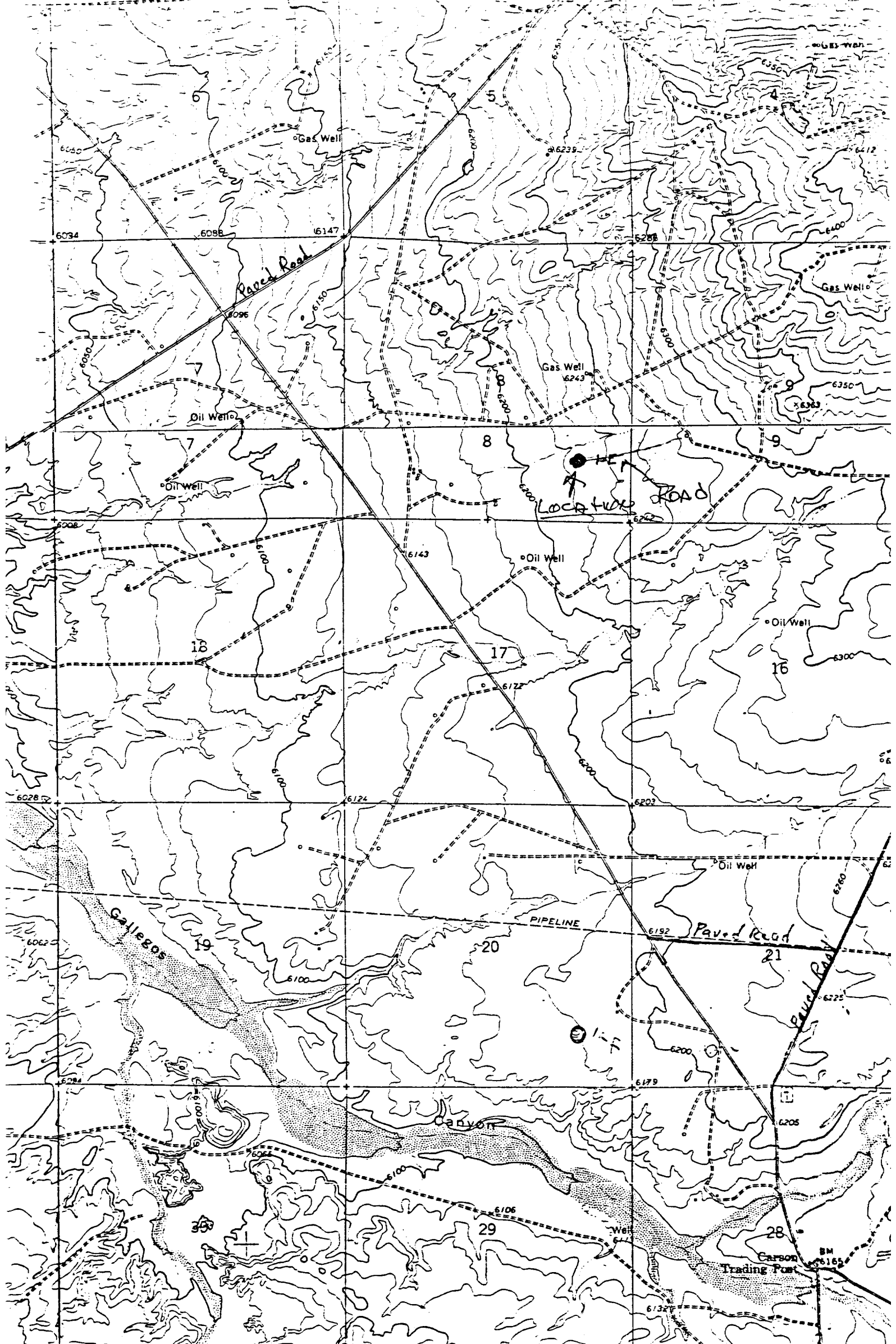


Ewell N. Walsh, P.E., President,
Walsh Engineering & Production
Corporation

ODESSA NATURAL CORPORATION
WESTERN POOL UNIT "B" NO. 1-E
1100'FSL, 990'FEL, Section 8-T26N-R11W
San Juan County, New Mexico

LOCATION LAYOUT





Vicinity Map for
ODESSA NATURAL CORPORATION #1E WESTERN POOL UNIT "B"
1100' FSL 990' FEL Sec 8-T26

ODESSA NATURAL CORPORATION
WESTERN POOL UNIT "B" NO. 1-E
1100'FSL, 990'FEL, SECTION 8-T26N-R11W
San Juan County, New Mexico

Seven Point Well Control Program

1. Surface Casing.
See Application for Permit to Drill.
2. Spools and Flanges.
 - A. Surface Casing - 8", Series 600, 2000 psi W.P.
 - B. Production, 8", Series 900, 3000 psi W.P.
 - C. Tubing Head - Series 900, 3000psi. W.P.
3. Intermediate Casing.
None
4. Blowout Preventers
Production Hole - 10", 3000 psi.
Fill, Kill and choke manifold -5000 psi. W.P.
5. Additional Equipment (If necessary)
 - A. Kelly Cock
 - B. Bit Float
 - C. Degasser
 - D. Pit Level Indicator
 - E. Sub with valve for drill pipe.
6. Anticipated Bottom Hole Pressure.
2700 psi. Current mud program is for 9.2 lb./gal mud with hydrostatic head of 3004 psi at 6286 feet. Mud weight will be increased if necessary for higher pressures.
7. Drilling Fluid.
Gel-Water