

UNITED STATES
DEPARTMENT OF THE INTERIOR
GEOLOGICAL SURVEY

APPLICATION FOR PERMIT TO DRILL, DEEPEN, OR PLUG BACK

1a. TYPE OF WORK

DRILL ☒DEEPEN ☐PLUG BACK ☐

b. TYPE OF WELL

OIL
WELL ☐GAS
WELL ☒

OTHER

SINGLE
ZONE ☐MULTIPLE
ZONE ☐

2. NAME OF OPERATOR

Dugan Production Corp.

3. ADDRESS OF OPERATOR

Box 208, Farmington, NM 87401

4. LOCATION OF WELL (Report location clearly and in accordance with any State requirements.)*

At surface 790' FSL - 790' FEL

At proposed prod. zone

14. DISTANCE IN MILES AND DIRECTION FROM NEAREST TOWN OR POST OFFICE*

20 miles south of Farmington, NM

15. DISTANCE FROM PROPOSED*

LOCATION TO NEAREST
PROPERTY OR LEASE LINE, FT. 790'
(Also to nearest drlg. unit line, if any)

16. NO. OF ACRES IN LEASE

320

17. NO. OF ACRES ASSIGNED
TO THIS WELL

160

18. DISTANCE FROM PROPOSED LOCATION*
TO NEAREST WELL, DRILLING, COMPLETED,
OR APPLIED FOR, ON THIS LEASE, FT.

2840'

19. PROPOSED DEPTH

1300'

20. ROTARY OR CABLE TOOLS

Rotary

21. ELEVATIONS (Show whether DF, RT, GR, etc.)

6018' GR

22. APPROX. DATE WORK WILL START*

November 25, 1979

23.

PROPOSED CASING AND CEMENTING PROGRAM

SIZE OF HOLE	SIZE OF CASING	WEIGHT PER FOOT	SETTING DEPTH	QUANTITY OF CEMENT
7-3/4"	7"	20#	90'	20 sx
4-3/4"	2-7/8"	6.4#	1300'	75 sx

Plan to drill 4-3/4" hole to test Pictured Cliffs Fm. Plan to run IES log to TD.
If productive, plan to set 2-7/8" tbg for csg, cement, selectively perforate, frac,
clean out after frac, run 1-1/4" tbg and complete well.

Plan to use 3000 psi BOP per attached schematic diagram. Will use master valve and
stripper head while completing well.

NMERB: Gas not dedicated.

RECEIVED

OCT 22 1979

U. S. GEOLOGICAL SURVEY
FARMINGTON, N. M.OCT 24 1979
OIL CORP.
DIST. 2

IN ABOVE SPACE DESCRIBE PROPOSED PROGRAM: If proposal is to deepen or plug back, give data on present productive zone and proposed non-productive zone. If proposal is to drill or deepen directionally, give pertinent data on subsurface locations and measured and true vertical depths. Give blowout preventer program, if any.

24.

SIGNED

Thomas A. Dugan

TITLE Petroleum Engineer

DATE 10-19-79

(This space for Federal or State office use)

PERMIT NO.

APPROVAL DATE

APPROVED BY

TITLE

DATE

CONDITIONS OF APPROVAL, IF ANY:

*ok Frank**WYMOCC*

*See Instructions On Reverse Side

**NEW MEXICO OIL CONSERVATION COMMISSION
WELL LOCATION AND ACREAGE DEDICATION PLAT**

Form C-102
Supersedes C-128
Effective 1-1-65

All distances must be from the outer boundaries of the Section.

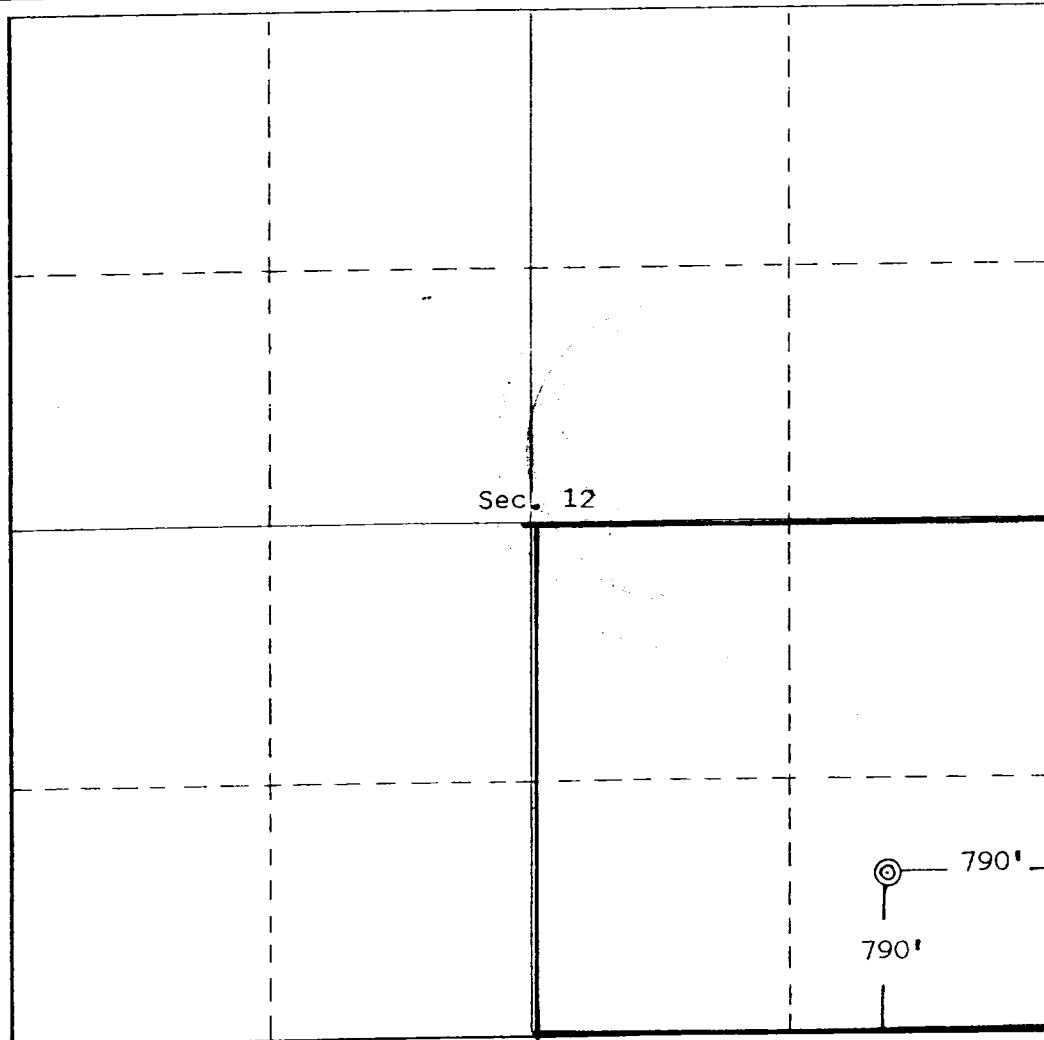
Operator Dugan Production Corporation			Lease Irish		Well No. 1J
Unit Letter P	Section 12	Township 26 North	Range 13 West	County San Juan	
Actual Footage Location of Well: 790' feet from the South line and 790' feet from the East line					
Ground Level Elev. 6018	Producing Formation Fruitland PC		Pool WAW ext	Dedicated Acreage: 160 Acres	

1. Outline the acreage dedicated to the subject well by colored pencil or hatchure marks on the plat below.
2. If more than one lease is dedicated to the well, outline each and identify the ownership thereof (both as to working interest and royalty).
3. If more than one lease of different ownership is dedicated to the well, have the interests of all owners been consolidated by communitization, unitization, force-pooling, etc?

☐ Yes ☐ No If answer is "yes," type of consolidation _____

If answer is "no," list the owners and tract descriptions which have actually been consolidated. (Use reverse side of this form if necessary.) _____

No allowable will be assigned to the well until all interests have been consolidated (by communitization, unitization, forced-pooling, or otherwise) or until a non-standard unit, eliminating such interests, has been approved by the Commission.



CERTIFICATION

I hereby certify that the information contained herein is true and complete to the best of my knowledge and belief.

Thomas A. Dugan
Name

Thomas A. Dugan

Position

Petroleum Engineer

Company

Dugan Production Corp.

Date

10-19-79

I hereby certify that the well location shown on this plat was plotted from field notes of actual surveys made by me or under my supervision, and that the same is true and correct to the best of my knowledge and belief.

Date Surveyed

October 7, 1979

Registered Professional Engineer
and/or Land Surveyor

Edgar L. Risenhoover
Certificate No. **5979**

Edgar L. Risenhoover, L.S.