

All distances must be from the outer boundaries of the Section.

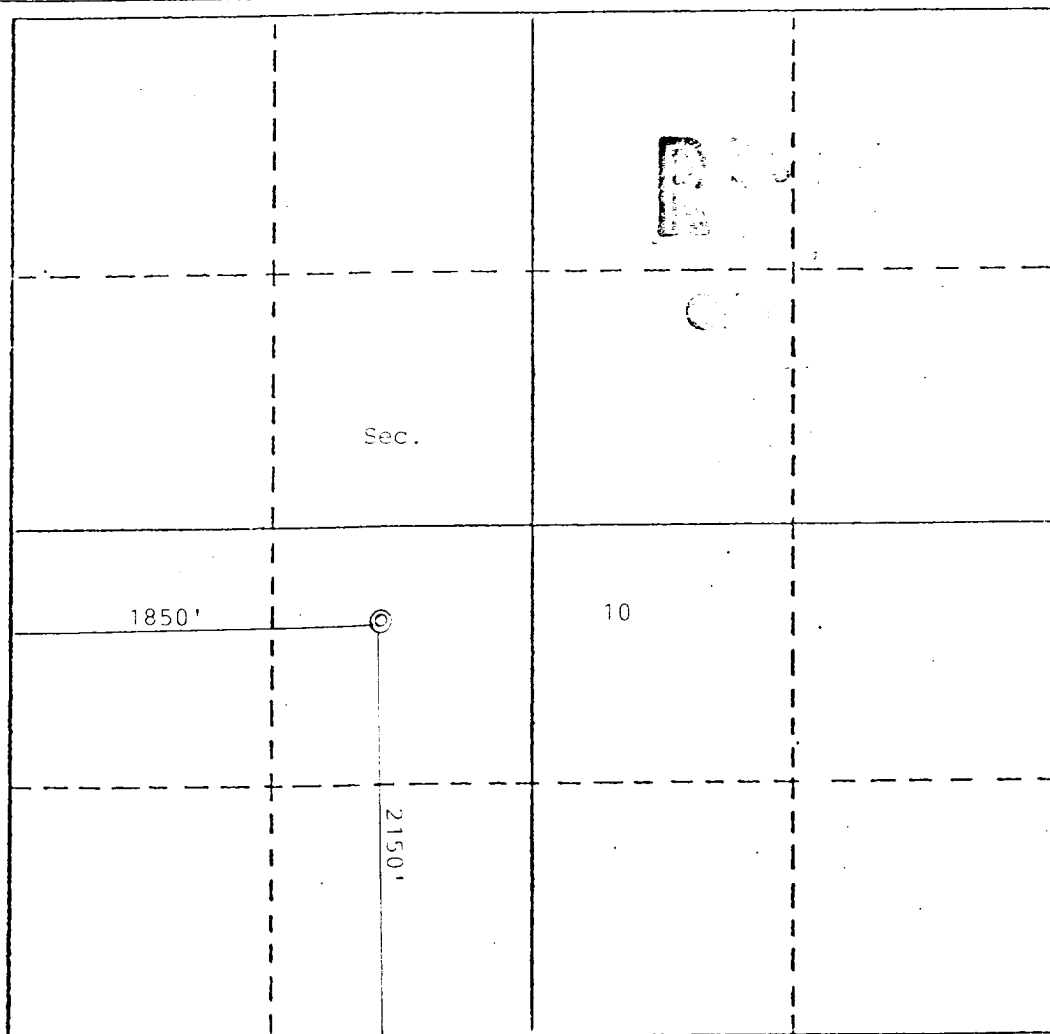
Operator MERRION OIL & GAS CORP.			Lease Chaco		Well No. 14
Unit Letter K	Section 2150	Township 26N	Range 13W	County San Juan	
Actual Footage Location of Well: 2150 feet from the South line and 1850 feet from the West line					
Ground Level Elev. 6230	Producing Formation Pictured Cliffs	Pool WAW Fruitland Pictured Cliffs Sand		Dedicated Acreage: 160 Acres	

1. Outline the acreage dedicated to the subject well by colored pencil or hachure marks on the plat below.
2. If more than one lease is dedicated to the well, outline each and identify the ownership thereof (both as to working interest and royalty).
3. If more than one lease of different ownership is dedicated to the well, have the interests of all owners been consolidated by communitization, unitization, force-pooling, etc?

☐ Yes ☐ No If answer is "yes," type of consolidation _____

If answer is "no," list the owners and tract descriptions which have actually been consolidated. (Use reverse side of this form if necessary.) _____

No allowable will be assigned to the well until all interests have been consolidated (by communitization, unitization, forced-pooling, or otherwise) or until a non-standard unit, eliminating such interests, has been approved by the Division.



CERTIFICATION

I hereby certify that the information contained herein is true and complete to the best of my knowledge and belief.

Name Steven S. Dunn
Position Operations Manager
Company Merrion Oil & Gas Corp.
Date 12//28/88

I hereby certify that the well location shown on this plat was plotted from field notes of actual surveys made by me or under my supervision, and that the same is true and correct to the best of my knowledge and belief.

Date Surveyed _____
Registered Professional Engineer and/or Land Surveyor _____

Certificate No. _____

