

OIL CONSERVATION COMMISSION
By the DISTRICT

✓

OIL CONSERVATION COMMISSION
BOX 2088
SANTA FE, NEW MEXICO

DATE April 24, 1980

RE: Proposed MC ✓
Proposed DHC ✓
Proposed NSL ✓
Proposed SWD ✓
Proposed WFX ✓
Proposed PMX ✓

Gentlemen:

I have examined the application dated April 23, 1980
for the Dugan Energy Corp. Newson A #7E B-10-26N-8W
Operator Lease and Well No. Unit, S-T-R

and my recommendations are as follows:

Yours very truly,

Frank E. Day



POWERS ELEVATION

OIL WELL ELEVATIONS AND LOCATIONS
CHERRY CREEK PLAZA, SUITE 1201
800 SOUTH CHERRY STREET
DENVER, COLORADO 80222
PHONE NO. 303/321-2217

April 21, 1980

New Mexico Oil & Gas Conservation Commission
Joe D. Ramey, Director
P.O. Box 2088
Santa Fe, New Mexico 87501

RE: Filing Exception to Rule 104F
Supron Energy Corporation
Newsom "A" #7E (formerly Newsom "A" #9)
NW NE Sec. 10 T26N R8W
605' FNL & 1705' FEL
San Juan County, New Mexico

Dear Sir:

Supron Energy Corporation requests an exception to Rule 104F for the above-mentioned well location. Enclosed is a location and elevation plat and a topographic map.

An exception was filed and approved December 7, 1979, for the Newsom #9 which was to be drilled to the Pictured Cliffs formation. The well was placed there due to topographic difficulties. The operator now wishes to dual complete the well in the Pictured Cliffs and the Dakota formations, changing the name of the well to the Newsom "A" #7E an infill well of the Newsom "A" #7 (1190' FSL & 1870' FEL).

Supron Energy Corporation has the operating rights to the Dakota formation on all the surrounding acreage except for the SW $\frac{1}{4}$ Sec. 2 T26N R8W, which is controlled by J. Glenn Turner, Jr. et al, Frank Schultz, and William G. Webb and the NW $\frac{1}{4}$ Sec. 15 T26N R8W, which is controlled by Consolidated Oil & Gas, Inc.

Letters will be sent by certified mail to the offsetting leaseholders for their consent or objection and will then be forwarded to your office.

Please note that this exception was originally granted for John H. Hill and Gordon L. Llewellyn, but has been returned to Supron Energy Corporation.



April 21, 1980
Page 2

Should you require any additional information in order to approve this application for exception to Rule 104F, please call.

Thank you.

Sincerely,

POWERS ELEVATION



Darryl Cooper

DC:vg
Enclosures

cc: (2) New Mexico Oil & Gas Conservation Commission, Aztec, New Mexico
Frances Cooper, Dallas, Texas
Steve Connor, Dallas, Texas





All distances must be from the outer boundaries of the Section

Location & Elevation Plat

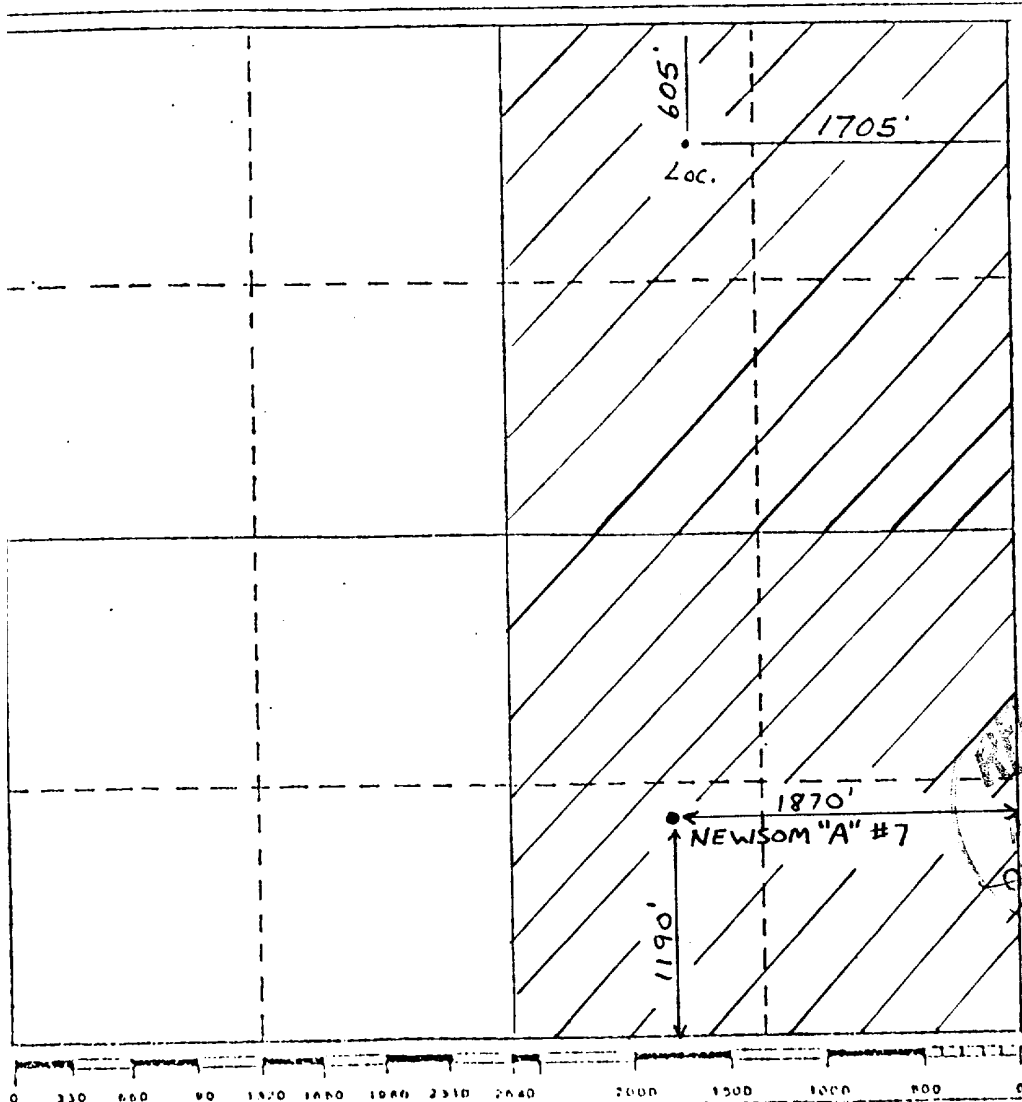
Owner John H. Hill + Gordon L. Llewellyn	Lease SF-078430	Well No. Newsom "A" #9 (#7E)
Section Letter B	Section 10	Township 26 N.
Range 8 W.	County San Juan	

Well Postage Location of Well: 605	feet from the North	line and 1705'	feet from the East	line
Ground Level Elev. 6903'	Producing Formation Pictured Cliffs	Pool Ballard Pictured Cliffs	Dedicated Acreage: 160	Acres

1. Outline the acreage dedicated to the subject well by colored pencil or hachure marks on the plat below.
 2. If more than one lease is dedicated to the well, outline each and identify the ownership thereof (both as to working interest and royalty).
 3. If more than one lease of different ownership is dedicated to the well, have the interests of all owners been consolidated by communitization, unitization, force-pooling, etc?
- ☐ Yes ☐ No If answer is "yes," type of consolidation _____

If answer is "no," list the owners and tract descriptions which have actually been consolidated. (Use reverse side of this form if necessary.) _____

No allowable will be assigned to the well until all interests have been consolidated (by communitization, unitization, forced-pooling, or otherwise) or until a non-standard unit, eliminating such interests, has been approved by the Division.



CERTIFICATION

I hereby certify that the information contained herein is true and complete to the best of my knowledge and belief.

George Lapaseotes
Name **George Lapaseotes**
V. Pres. Powers Elevation
Position **Agent Consultant for**

Company
Hill & Llewellyn

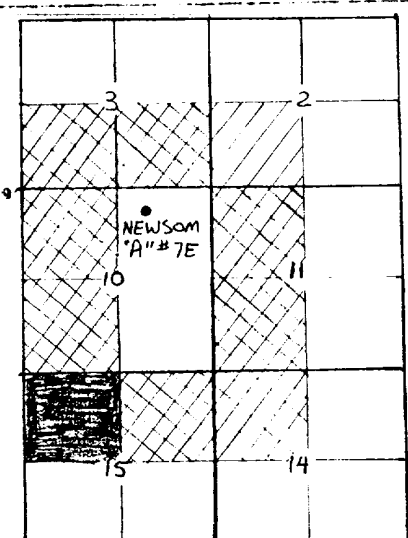
Date
November 13, 1979

I hereby certify that the location shown on this plat is true and correct to the best of my knowledge and belief.

NEALE C. EDWARDS
NEALE C. EDWARDS
REGISTERED LAND SURVEYOR
6857

W. C. Edwards
W. C. Edwards
Registered Professional Engineer
and/or Land Surveyor

6857
Certificate No.



Offset Mineral Ownership(Dakota)

- LEGEND**
- Supron Energy Corporation
 - J. Glenn Turner, Jr. et al., Frank Schultz, William G. Webb
 - Consolidated Oil & Gas, Inc.

