



STATE OF NEW MEXICO  
ENERGY AND MINERALS DEPARTMENT  
OIL CONSERVATION DIVISION

August 26, 1980

BRUCE KING  
GOVERNOR  
LARRY KEHOE  
SECRETARY

POST OFFICE BOX 2088  
STATE LAND OFFICE BUILDING  
SANTA FE, NEW MEXICO 87501  
(505) 827-2434

Powers Elevation  
Cherry Creek Plaza  
Suite 1201  
600 South Cherry Street  
Denver, Colorado 80222

Attention: Ms. Connie Frailey

Administrative Order NSL-1259

Gentlemen:

Reference is made to your application, on behalf of Supron Energy Corporation, for approval of a non-standard location for their Newsom Well No. 10R to be located 1045 feet from the South line and 1215 feet from the West line of Section 20, Township 26 North, Range 8 West, NMPM, Ballard-Pictured Cliffs Pool, San Juan County, New Mexico.

By authority granted me under the provisions of Rule 104 F of the Division Rules and Regulations, the above-described unorthodox location is hereby approved.

Sincerely,

JOE D. RAMEY,  
Director

JDR/RLS/dr

cc: Oil Conservation Division - Aztec  
Oil & Gas Engineering Committee - Hobbs  
U. S. Geological Survey - Farmington



OIL CONSERVATION COMMISSION  
Alto DISTRICT

OIL CONSERVATION COMMISSION  
BOX 2088  
SANTA FE, NEW MEXICO

DATE August 3, 1980

RE: Proposed MC \_\_\_\_\_  
Proposed DHC \_\_\_\_\_  
Proposed NSL x \_\_\_\_\_  
Proposed SWD \_\_\_\_\_  
Proposed WFX \_\_\_\_\_  
Proposed PMX \_\_\_\_\_

Gentlemen:

I have examined the application dated September 2, 1980  
for the Superior Energy Corp. Newton #10 R M-20-260-84  
Operator JO Lease and Well No. Unit, S-T-R

and my recommendations are as follows:

Agree (this is per our letter last week)  
note the section error on letter  
\_\_\_\_\_  
\_\_\_\_\_  
\_\_\_\_\_

Yours very truly,

Sam



POWERS ELEVATION

OIL WELL ELEVATIONS AND LOCATIONS  
CHERRY CREEK PLAZA, SUITE 1201  
5700 SOUTH CHERRY STREET  
DENVER, COLORADO 80222  
PHONE NO. 303-321-2217

August 25, 1980

New Mexico Oil & Gas Conservation Commission  
Joe D. Ramey, Director  
P. O. Box 2088  
Santa Fe, New Mexico 87501

RE: Filing Exception to Rule 104F  
Supron Energy Corporation  
Newsom #10R 2C  
SW SW Sec. ~~22~~ T26N R8W  
1045' FSL & 1215' FWL  
San Juan County, New Mexico



Dear Mr. Ramey:

Supron Energy Corporation requests an exception to Rule 104F for the above-captioned well location. Enclosed is a location and elevation plat and a topographic map.

The location was staked at the above coordinates because of topographic difficulties.

Supron Energy Corporation has the operating rights to the Pictured Cliffs formation on the surrounding acreage, so no other leaseholders are involved.

Should you require any additional information in order to approve this application, please call.

Thank you.

Sincerely,

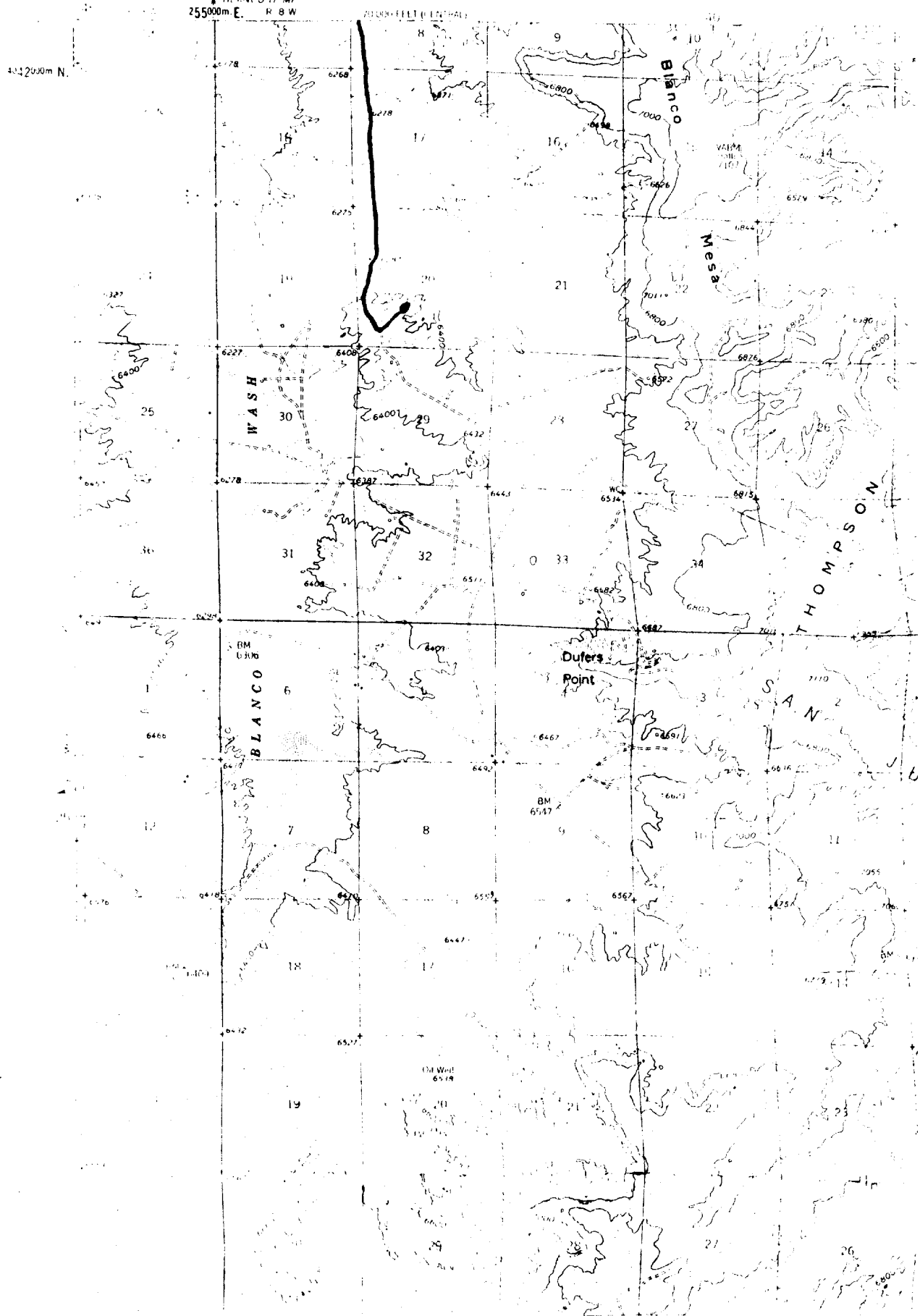
POWERS ELEVATION

*Connie L. Frailey*  
Connie Frailey

Enclosures  
CF/an

cc: (2) Mexico Oil & Gas Conservation Commission, Aztec, New Mexico  
Frances Cooper, Dallas, Texas  
Haskell Fleetwood, Supron Energy Corp., Dallas, TX  
Rudy Motto, Supron Energy Corp., Farmington, New Mexico

UNITED STATES  
DEPARTMENT OF THE INTERIOR  
GEOLOGICAL SURVEY



## WELL LOCATION AND ACREAGE DEDICATION PLAT

Effective 1-1-65

All distances must be from the outer boundaries of the Section.

Operator <b>Supron Energy Corporation</b>		Lease <b>SF-078433</b>		Well No. <b>#10R</b>	
Unit Letter <b>M</b>	Section <b>20</b>	Township <b>26 North</b>	Range <b>8 West</b>	County <b>San Juan</b>	
Actual Footage Location of Well: <b>1045</b> feet from the <b>South</b> line and <b>1215</b> feet from the <b>West</b> line					
Ground Level Elev. <b>6931'</b>	Producing Formation <b>Pictured Cliffs</b>		Pool <b>BALLARD PICTURED CLIFFS</b>		Dedicated Acreage: <b>160</b> Acres

1. Outline the acreage dedicated to the subject well by colored pencil or hachure marks on the plat below.
2. If more than one lease is dedicated to the well, outline each and identify the ownership thereof (both as to working interest and royalty).
3. If more than one lease of different ownership is dedicated to the well, have the interests of all owners been consolidated by communitization, unitization, force-pooling, etc?

☐ Yes ☐ No If answer is "yes," type of consolidation \_\_\_\_\_

If answer is "no," list the owners and tract descriptions which have actually been consolidated. (Use reverse side of this form if necessary.) \_\_\_\_\_

No allowable will be assigned to the well until all interests have been consolidated (by communitization, unitization, forced-pooling, or otherwise) or until a non-standard unit, eliminating such interests, has been approved by the Commission.

## CERTIFICATION

I hereby certify that the information contained herein is true and complete to the best of my knowledge and belief.

*George Lapaseotes*

Name **George Lapaseotes**  
V. Pres. Powers Elevation

Position  
Agent Consultant for

Company  
Supron Energy Corporation

Date  
5-12-80

I hereby certify that the well location shown on this plat was plotted from field notes of actual surveys made by me or under my supervision, and that the same is true and correct to the best of my knowledge and belief.

Date Surveyed  
*George R. Huddleston*  
Registered Professional Engineer  
and or Licensed Surveyor

Certificate No. **68**

