

UNITED STATES
DEPARTMENT OF THE INTERIOR
GEOLOGICAL SURVEY

30-045-24353

5. LEASE DESIGNATION AND SERIAL NO.
NM 11773

6. IF INDIAN, ALLOTTEE OR TRIBE NAME

7. UNIT AGREEMENT NAME

8. FARM OR LEASE NAME
Windfall

9. WELL NO.
#1

10. FIELD AND POOL, OR WILDCAT
WAW FR PC

11. SEC., T., R., M., OR BLK. AND SURVEY OR AREA
Sec 31 T26N R11W

12. COUNTY OR PARISH
San Juan

13. STATE
NM

APPLICATION FOR PERMIT TO DRILL, DEEPEN, OR PLUG BACK

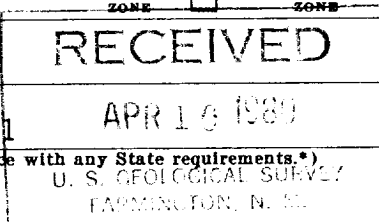
1a. TYPE OF WORK
DRILL ☒ DEEPEN ☐ PLUG BACK ☐

b. TYPE OF WELL
OIL WELL ☐ GAS WELL ☒ OTHER ☐
SINGLE ZONE ☐ MULTIPLE ZONE ☐

2. NAME OF OPERATOR
Dugan Production Corp.

3. ADDRESS OF OPERATOR
Box 208, Farmington, NM 87401

4. LOCATION OF WELL (Report location clearly and in accordance with any State requirements.)
At surface 1740' FSL - 970' FWL
At proposed prod. zone



14. DISTANCE IN MILES AND DIRECTION FROM NEAREST TOWN OR POST OFFICE*
16-1/2 miles south of Bloomfield, NM

15. DISTANCE FROM PROPOSED* LOCATION TO NEAREST PROPERTY OR LEASE LINE, FT. (Also to nearest drlg. unit line, if any)
970'

16. NO. OF ACRES IN LEASE
479.80

17. NO. OF ACRES ASSIGNED TO THIS WELL
159.80 160

18. DISTANCE FROM PROPOSED LOCATION* TO NEAREST WELL, DRILLING, COMPLETED, OR APPLIED FOR, ON THIS LEASE, FT.

19. PROPOSED DEPTH
1275'

20. ROTARY OR CABLE TOOLS
Rotary

21. ELEVATIONS (Show whether DF, RT, GR, etc.)
6155' GL

22. APPROX. DATE WORK WILL START*
ASAP

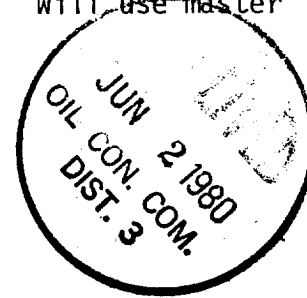
23. PROPOSED CASING AND CEMENTING PROGRAM

SIZE OF HOLE	SIZE OF CASING	WEIGHT PER FOOT	SETTING DEPTH	QUANTITY OF CEMENT
8-3/4"	7"	20#	90'	35 sx
5"	2-7/8"	6.4#	1275'	125 sx

Plan to drill 5" hole to test Pictured Cliffs Fm. Plan to run IES log to TD. If productive, plan to set 2-7/8" tbg for csg, cement, selectively perforate, frac, clean out after frac, run 1-1/4" tbg and complete well.

Plan to use 3000 psi BOP per attached schematic diagram. Will use master valve and stripper head while completing well.

NMERB: Gas not dedicated.



IN ABOVE SPACE DESCRIBE PROPOSED PROGRAM: If proposal is to deepen or plug back, give data on present productive zone and proposed new productive zone. If proposal is to drill or deepen directionally, give pertinent data on subsurface locations and measured and true vertical depths. Give blowout preventer program, if any.

24. SIGNED Thomas A. Dugan TITLE President DATE 4-9-80

(This space for Federal or State office use)

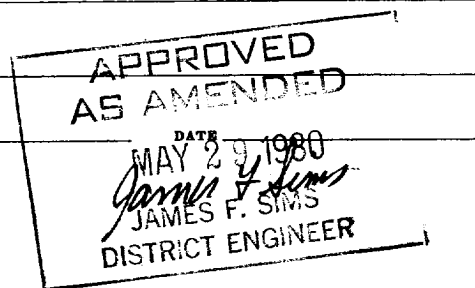
PERMIT NO. APPROVAL DATE

APPROVED BY TITLE

CONDITIONS OF APPROVAL, IF ANY:

NM000

*See Instructions On Reverse Side



**NEW MEXICO OIL CONSERVATION COMMISSION
WELL LOCATION AND ACREAGE DEDICATION PLAT**

Form C-102
Supersedes C-128
Effective 1-1-65

All distances must be from the outer boundaries of the Section.

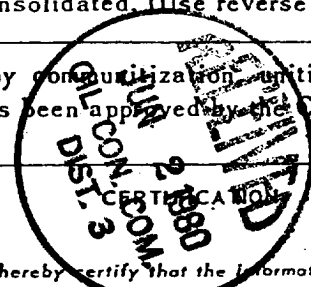
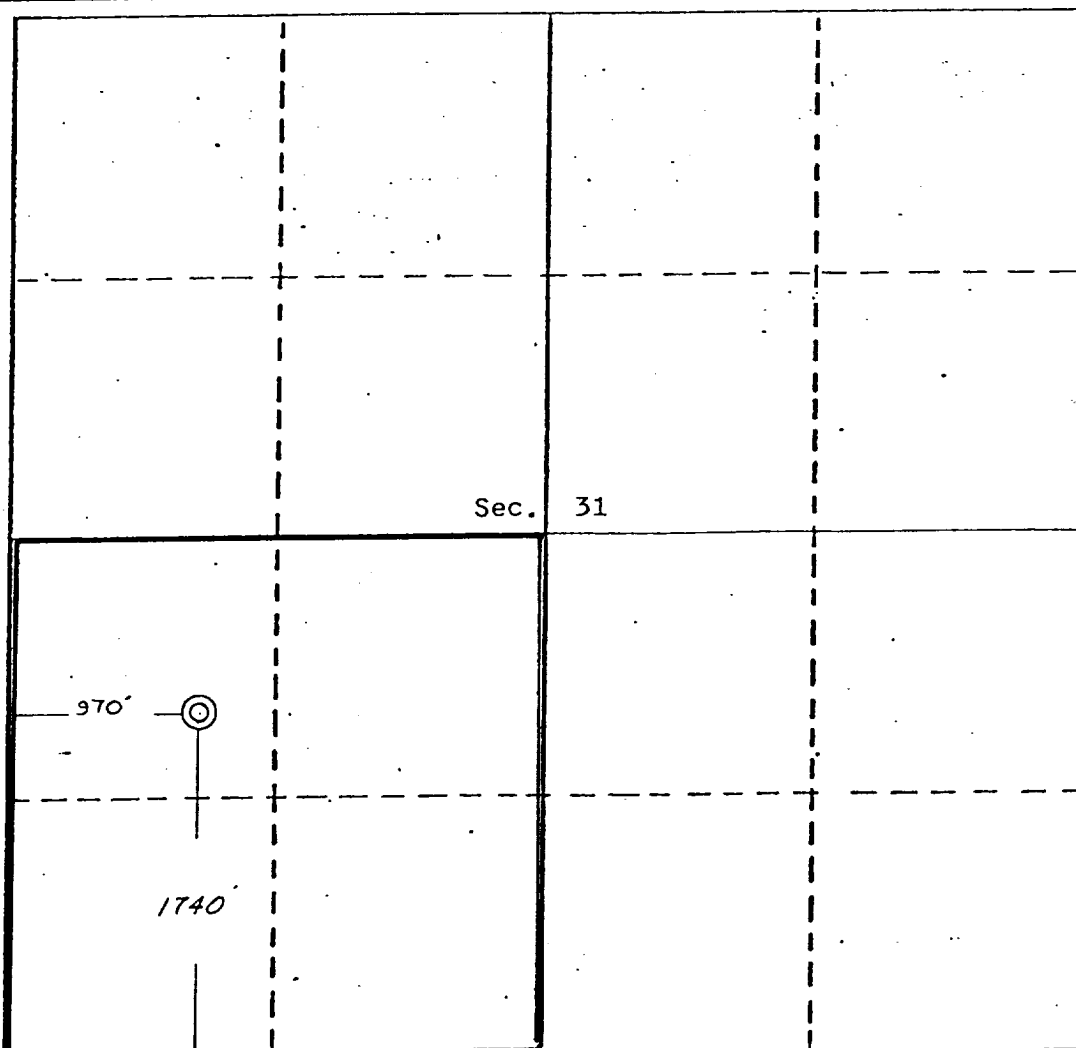
Operator Dugan Production Corporation			Lease Windfall		Well No. #1
Unit Letter L	Section 31	Township 26 North	Range 11 West	County San Juan	
Actual Footage Location of Well:					
1740	feet from the	South	line and	970	feet from the West line
Ground Level Elev. 6155	Producing Formation Fruitland PC		Pool WAW		Dedicated Acreage: 160 Acres

1. Outline the acreage dedicated to the subject well by colored pencil or hachure marks on the plat below.
2. If more than one lease is dedicated to the well, outline each and identify the ownership thereof (both as to working interest and royalty).
3. If more than one lease of different ownership is dedicated to the well, have the interests of all owners been consolidated by communitization, unitization, force-pooling, etc?

☐ Yes ☐ No If answer is "yes," type of consolidation _____

If answer is "no," list the owners and tract descriptions which have actually been consolidated. (Use reverse side of this form if necessary.) _____

No allowable will be assigned to the well until all interests have been consolidated (by communitization, unitization, forced-pooling, or otherwise) or until a non-standard unit, eliminating such interests, has been approved by the Commission.



I hereby certify that the information contained herein is true and complete to the best of my knowledge and belief.

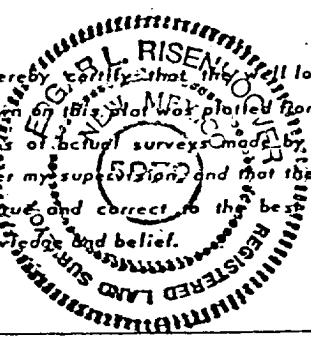
Thomas A. Dugan

Name
Thomas A. Dugan
Position
President

Company
Dugan Production Corp.

Date
4-9-80

I hereby certify that the well location shown on this plat was plotted from field notes of actual surveys made by me or under my supervision and that the same is true and correct to the best of my knowledge and belief.



Date Surveyed
April 3, 1980

Registered Professional Engineer and/or Land Surveyor

Edgar L. Risenhoover

Certificate No. **5979**
Edgar L. Risenhoover, L.S.

0 330 660 990 1320 1650 1980 2310 2640 2970 3300 3630 3960 4290 4620 4950 5280 5610 5940 6270 6600