

UNITED STATES  
DEPARTMENT OF THE INTERIOR  
GEOLOGICAL SURVEY

## APPLICATION FOR PERMIT TO DRILL, DEEPEN, OR PLUG BACK

## 1a. TYPE OF WORK

DRILL ☒DEEPEN ☐PLUG BACK ☐

## b. TYPE OF WELL

OIL  
WELL ☐GAS  
WELL ☒OTHER ☐SINGLE  
ZONE ☒MULTIPLE  
ZONE ☐

## 2. NAME OF OPERATOR

Dome Petroleum Corp.

## 3. ADDRESS OF OPERATOR

501 Airport Dr., Suite 107, Farmington, New Mexico 87401

## 4. LOCATION OF WELL (Report location clearly and in accordance with any State requirements.)

At surface 1850' FSL, 1840' FWL

At proposed prod. zone

## 14. DISTANCE IN MILES AND DIRECTION FROM NEAREST TOWN OR POST OFFICE\*

20 miles south of Farmington, New Mexico

## 15. DISTANCE FROM PROPOSED\*

LOCATION TO NEAREST  
PROPERTY OR LEASE LINE, FT.  
(Also to nearest drg. unit line, if any)

## 16. NO. OF ACRES IN LEASE

960

## 18. DISTANCE FROM PROPOSED LOCATION\*

TO NEAREST WELL, DRILLING, COMPLETED,  
OR APPLIED FOR, ON THIS LEASE, FT.

## 19. PROPOSED DEPTH

1500'

## 21. ELEVATIONS (Show whether DF, RT, GR, etc.)

6069' GR

## 23.

## PROPOSED CASING AND CEMENTING PROGRAM

SIZE OF HOLE	SIZE OF CASING	WEIGHT PER FOOT	SETTING DEPTH	QUANTITY OF CEMENT
12 1/4"	8 5/8"	23#	100'	75 sacks (circulated)
6 1/2"	4 1/2"	10.5#	1500'	175 sacks (circulated)

Move in rotary tools. Drill 12 1/4" hole to 100'. Set 100' of new 8 5/8", 23# K55 casing. Cement with 75 sacks class "B" cement w/2% CaCl. Wait 12 hours on cement. Install 6" 900 series 3000# test Regan type K blowout preventer. Test to 500 psi before drilling out from under surface pipe. Check rams daily. Drill 6 1/2" hole to T.D. The geologic name of the surface formation is Ojo Alamo. Gas is expected in the Pictured Cliff. All other formations are probably water bearing. Pertinent formation tops are estimated as Farmington 450'; Fruitland 890'; Pictured Cliff 1220'. Mud system will be low solids non dispersed. Mud weight 8.8-9.2 #/gal, fluid loss 8-10cc, viscosity 30-50 sec./quart. No abnormal temperatures or pressures are anticipated. Logging program will be DIL, PDC/CNL/GR with Caliper Log. If productive 4 1/2", 10.5#, K55 casing will be run and cemented with 125 sacks 65/35 Pozmix w/6% gel and 10# Gilsonite/sx. Followed with 150 sacks class "B" cement with 2% CaCl. Drilling should require approximately 7 1/2 hours.

IN ABOVE SPACE DESCRIBE PROPOSED PROGRAM: If proposal is to deepen or plug back, give data on present productive zone and proposed new productive zone. If proposal is to drill or deepen directionally, give pertinent data on subsurface locations and measured and true vertical depths. Give blowout preventer program, if any.

24.

SIGNED

H. D. HOLJANGSWORTH

TITLE Drlg. &amp; Prod. Foreman

DATE 4/25/80

(This space for Federal or State office use)

PERMIT NO.

APPROVAL DATE

APPROVED BY

TITLE

CONDITIONS OF APPROVAL, IF ANY:

DRILLING OPERATIONS AUTHORIZED ARE  
SUBJECT TO COMPLETION WITH ATTACHED  
"GENERAL REQUIREMENTS"

NMOCC

APPROVED  
AS AMENDEDJAMES F. JAMES  
DISTRICT ENGINEER

## OIL CONSERVATION DIVISION

STATE OF NEW MEXICO  
ENERGY AND MINERALS DEPARTMENTP. O. BOX 2088  
SANTA FE, NEW MEXICO 87501Form C-102  
Revised 10-1-78

All distances must be from the outer boundaries of the Section.

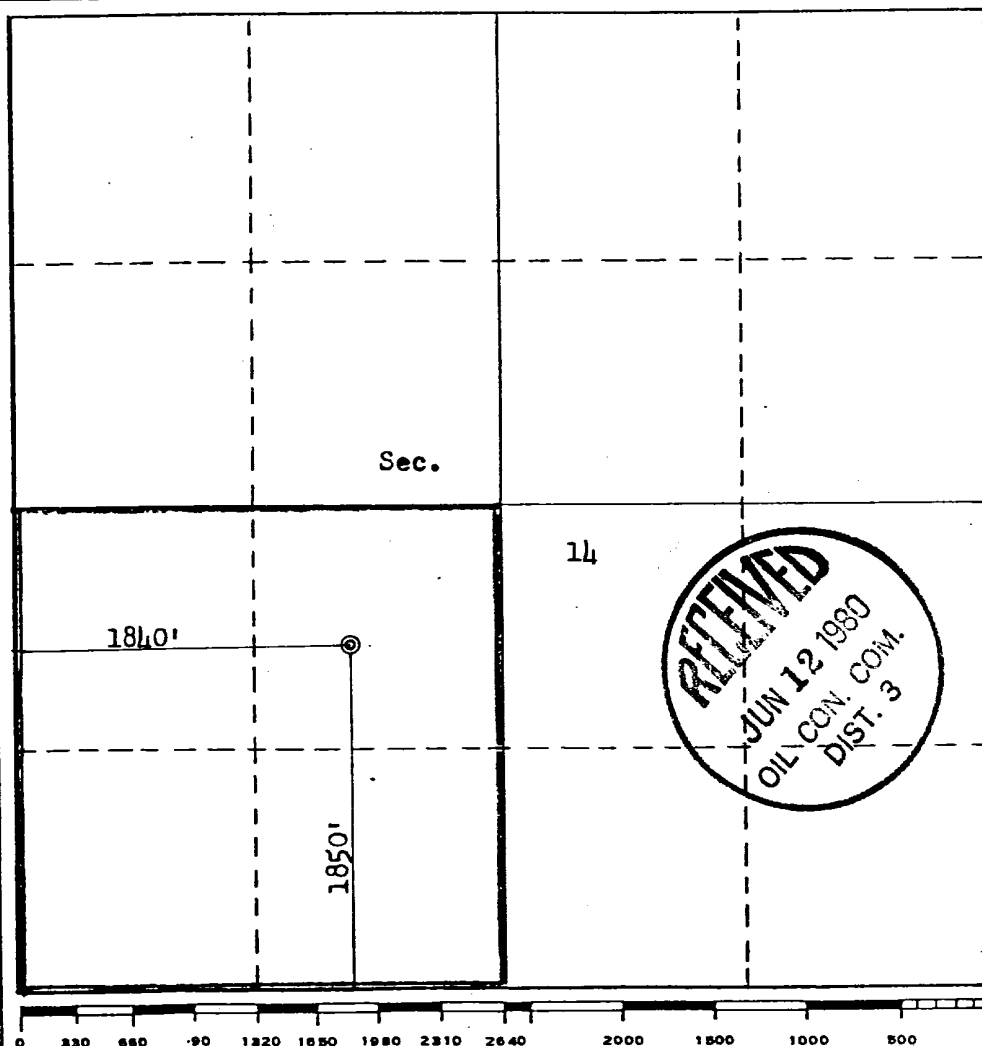
Operator <b>DOME PETROLEUM CORPORATION</b>		Lease <b>DOME-FEDERAL 14-26-13</b>		Well No. <b>4</b>
Unit Letter <b>K</b>	Section <b>14</b>	Township <b>26N</b>	Range <b>13W</b>	County <b>San Juan</b>
Actual Footage Location of Well: <b>1850</b> feet from the <b>South</b> line and <b>1840</b> feet from the <b>West</b> line				
Ground Level Elev. <b>6069</b>	Producing Formation <b>PICTURED CLIFF</b>	Pool <b>EXT WAW FRUITLAND-PICTURED CLIFF</b>	Dedicated Acreage: <b>160</b> Acres	

1. Outline the acreage dedicated to the subject well by colored pencil or hachure marks on the plat below.
2. If more than one lease is dedicated to the well, outline each and identify the ownership thereof (both as to working interest and royalty).
3. If more than one lease of different ownership is dedicated to the well, have the interests of all owners been consolidated by communitization, unitization, force-pooling, etc?

☐ Yes ☐ No If answer is "yes," type of consolidation \_\_\_\_\_

If answer is "no," list the owners and tract descriptions which have actually been consolidated. (Use reverse side of this form if necessary.) \_\_\_\_\_

No allowable will be assigned to the well until all interests have been consolidated (by communitization, unitization, forced-pooling, or otherwise) or until a non-standard unit, eliminating such interests, has been approved by the Commission.



## CERTIFICATION

I hereby certify that the information contained herein is true and complete to the best of my knowledge and belief.

Name

H. D. HOLLINGSWORTH

Position

DELEG. & PROD. FOREMAN  
Company

DOME PETROLEUM CORP.

Date

APRIL 25, 1980

I hereby certify that the well location shown on this plat was plotted from field notes of actual surveys made by me or under my supervision, and that the same is true and correct to the best of my knowledge and belief.

Date Surveyed

April 24, 1980

Registered Professional Engineer  
and/or Land Surveyor

Fred B. Kerr Jr.

Certificate No. B. KERR, JR.

3950



# DOME PETROLEUM CORP.

SUITE 1400, COLORADO STATE BANK BLDG.

1600 BROADWAY

DENVER, COLORADO 80202

TELEPHONE  
(303) 861-1230

## DEVELOPMENT PLAN FOR SURFACE USE

Dome Federal 14-26-13 #4  
1850' FSL, 1840' FWL  
Sec. 14, T26N, R13W  
San Juan County, New Mexico

### 1. EXISTING ROADS

The main road to the location is that from Farmington toward Bisti (Bisti Highway), leaving this road approximately 23 miles south of Farmington and using existing side roads to the location.

### 2. PLANNED ACCESS ROADS

The access road, to be routed as shown on the attached map, will be 18' wide with adequate ditch and water bars.

### 3. EXISTING WELLS

Existing wells within one mile of location are shown on the attached topographic map.

### 4. LOCATION OF PROPOSED FACILITIES

Development of commercial gas production will require separation facilities on the location pad. Equipment and pits will be fenced as required for protection of livestock and wildlife. Above ground facilities will be painted brown or grey to blend in with the surrounding area as specified by the BLM. The disturbed areas no longer needed for operations after well completion will be restored to natural contour and reseeded.

### 5. LOCATION AND TYPE OF WATER SUPPLY

To be hauled from El Paso Natural Gas Co. water pit at Chaco Gas Plant, approximately 3 miles east.

### 6. SOURCE OF CONSTRUCTION

Not applicable.

### 7. METHOD OF HANDLING WASTE MATERIAL

All garbage and trash that can be burned shall be burned. All trash that cannot be burned will be contained in a trash pit and covered with a minimum of 24 inches of dirt. All drilling waste such as cuttings, overflows of oil, water and drilling fluids will be contained in the reserve pit and buried with adequate cover upon completion of operations. The reserve pit will be fenced until cleanup operations are commenced. Toilet facilities will be provided.

### 8. ANCILLARY FACILITIES

No camps or airstrips are proposed for this location.

9. WELL SITE LAYOUT

See attached diagram.

10. PLANS FOR RESTORATION OF SURFACE

Cleanup of the location will commence immediately following the removal of the drilling equipment. The reserve pit will be fenced until restoration operations are commenced. The location will be returned to original contour if the well is not productive. Both the road and location will be reseeded in accordance with BLM specifications.

11. OTHER INFORMATION

Topography consists of rolling hills with very sandy soil. Vegetation is composed of Snake Weed, Mormon Tea, Yucca, Prickly Pear and Blue Gramma.

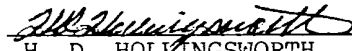
12. LEASEE'S OR OPERATOR'S REPRESENTATIVE

Dome Petroleum Corporation  
H. D. Hollingsworth  
501 Airport Drive, Suite 107  
Farmington, New Mexico 87401

Phone: 505-325-2897 Office  
505-327-1548 Home

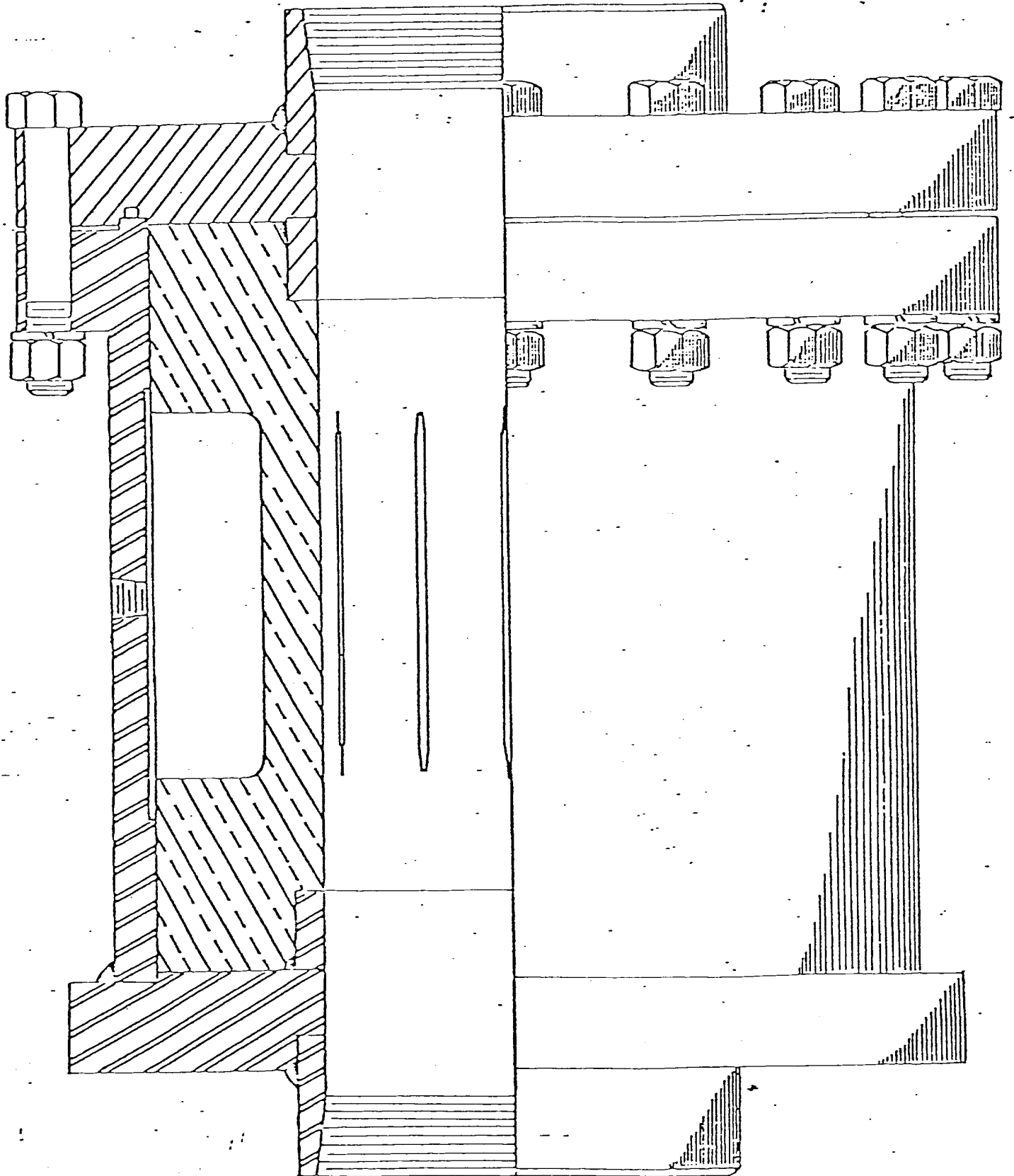
13. CERTIFICATION

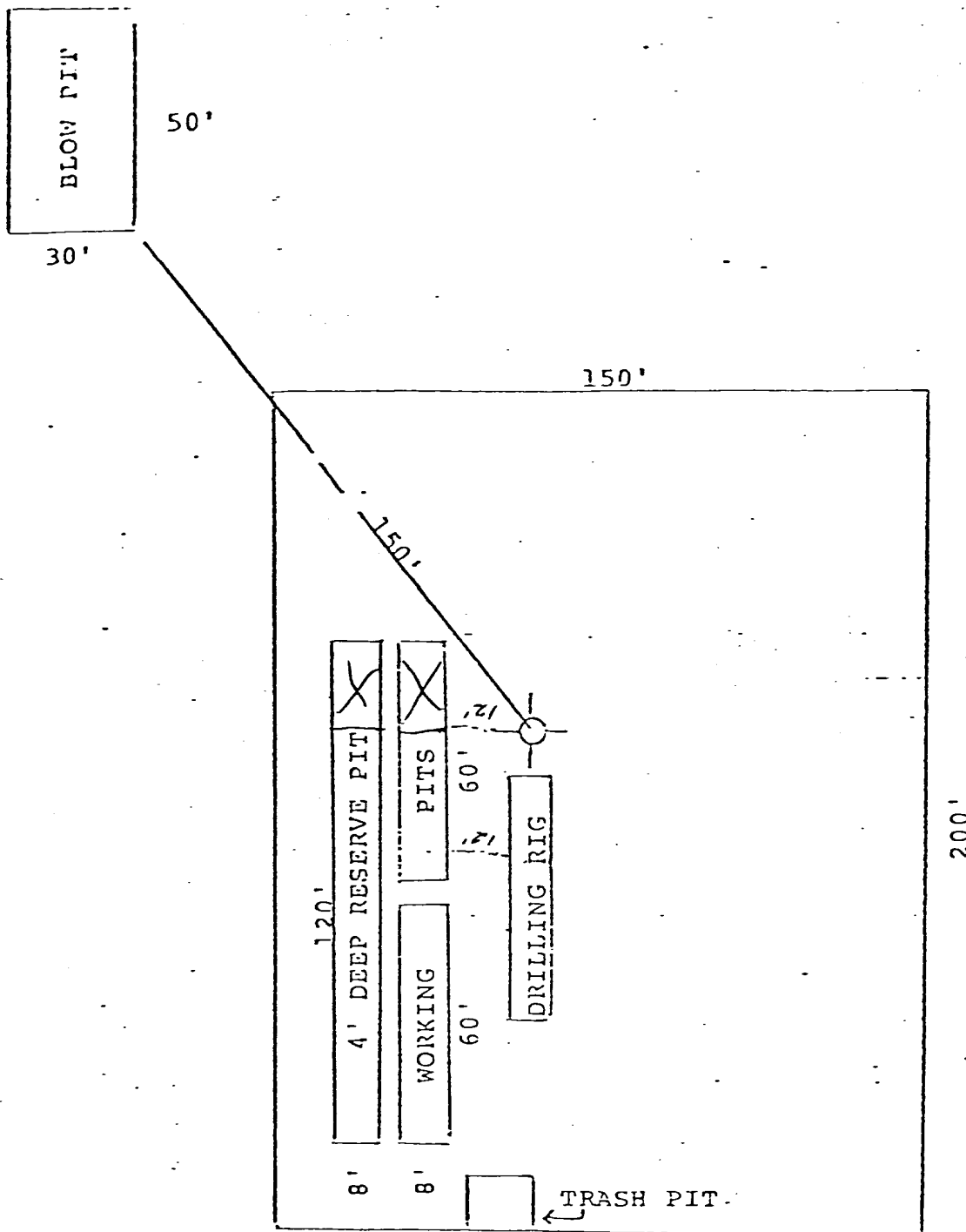
I hereby certify that I, or persons under my direct supervision have inspected the proposed drill site and access route; that I am familiar with the conditions which presently exist; that the statements made in the plan are, to the best of my knowledge, true and correct; and that the work associated with the operations proposed herein will be performed by Dome Petroleum Corporation and it's contractors and sub-contractors in conformity with this plan and the terms and conditions under which it is approved.

  
H. D. HOLLINGSWORTH  
Drilling & Production Foreman  
Dome Petroleum Corporation

HDH:ig

3000 PSI API WORKING PRESSURE





**DOME PETROLEUM CORP.**

SUITE 1500, COLORADO STATE BANK BLDG.

1600 BROADWAY

DENVER, COLORADO 80202

