

UNITED STATES  
DEPARTMENT OF THE INTERIOR  
GEOLOGICAL SURVEY

APPLICATION FOR PERMIT TO DRILL, DEEPEN, OR PLUG BACK

1a. TYPE OF WORK

DRILL ☒

DEEPEN ☐

PLUG BACK ☐

b. TYPE OF WELL

OIL  
WELL ☐

GAS  
WELL ☒

OTHER

SINGLE  
ZONE ☐

MULTIPLE  
ZONE ☐

2. NAME OF OPERATOR

Jerome P. McHugh

3. ADDRESS OF OPERATOR

Box 208, Farmington, NM 87401

4. LOCATION OF WELL (Report location clearly and in accordance with any State requirements.)\*

At surface

1830' FNL - 1070' FEL

At proposed prod. zone

14. DISTANCE IN MILES AND DIRECTION FROM NEAREST TOWN OR POST OFFICE\*

20 miles south of Farmington, NM

15. DISTANCE FROM PROPOSED\*

LOCATION TO NEAREST  
PROPERTY OR LEASE LINE, FT.  
(Also to nearest drlg. unit line, if any)

1070'

18. DISTANCE FROM PROPOSED LOCATION\*  
TO NEAREST WELL, DRILLING, COMPLETED,  
OR APPLIED FOR, ON THIS LEASE, FT.

100'

16. NO. OF ACRES IN LEASE

160

19. PROPOSED DEPTH

1330'

17. NO. OF ACRES ASSIGNED  
TO THIS WELL

160

20. ROTARY OR CABLE TOOLS

Rotary

21. ELEVATIONS (Show whether DF, RT, GR, etc.)

6133' GR

22. APPROX. DATE WORK WILL START\*

ASAP

23. PROPOSED CASING AND CEMENTING PROGRAM

SIZE OF HOLE	SIZE OF CASING	WEIGHT PER FOOT	SETTING DEPTH	QUANTITY OF CEMENT
8-3/4"	7"	14#	90'	35 SX
6-1/4"	4-1/2"	9.5#	1330'	50 SX*

Plan to drill 6-1/4" hole to 1330' and set 4-1/2" casing above formation.  
Plan to drill 3-7/8" hole w/air to test WAW Fruitland Formation in open hole.  
If productive, plan to run tbq and complete well.

Plan to use 3000 psi BOP per attached schematic diagram. Will use master valve  
and stripper head while completing well.

NMERB: Gas dedicated.



IN ABOVE SPACE DESCRIBE PROPOSED PROGRAM: If proposal is to deepen or plug back, give data on present productive zone and proposed new productive zone. If proposal is to drill or deepen directionally, give pertinent data on subsurface locations and measured and true vertical depths. Give blowout preventer program, if any.

24.

SIGNED Sherman E. Dugan TITLE Agent

DATE 8-14-80

(This space for Federal or State office use)

PERMIT NO. \_\_\_\_\_

APPROVAL DATE \_\_\_\_\_

APPROVED BY \_\_\_\_\_

TITLE \_\_\_\_\_

DATE \_\_\_\_\_

CONDITIONS OF APPROVAL, IF ANY:

NMOC  
\*See Instructions On Reverse Side

~~OPERATOR~~

NEW MEXICO OIL CONSERVATION COMMISSION  
WELL LOCATION AND ACREAGE DEDICATION PLAT

Form C-102  
Supersedes C-128  
Effective 1-1-65

All distances must be from the outer boundaries of the Section.

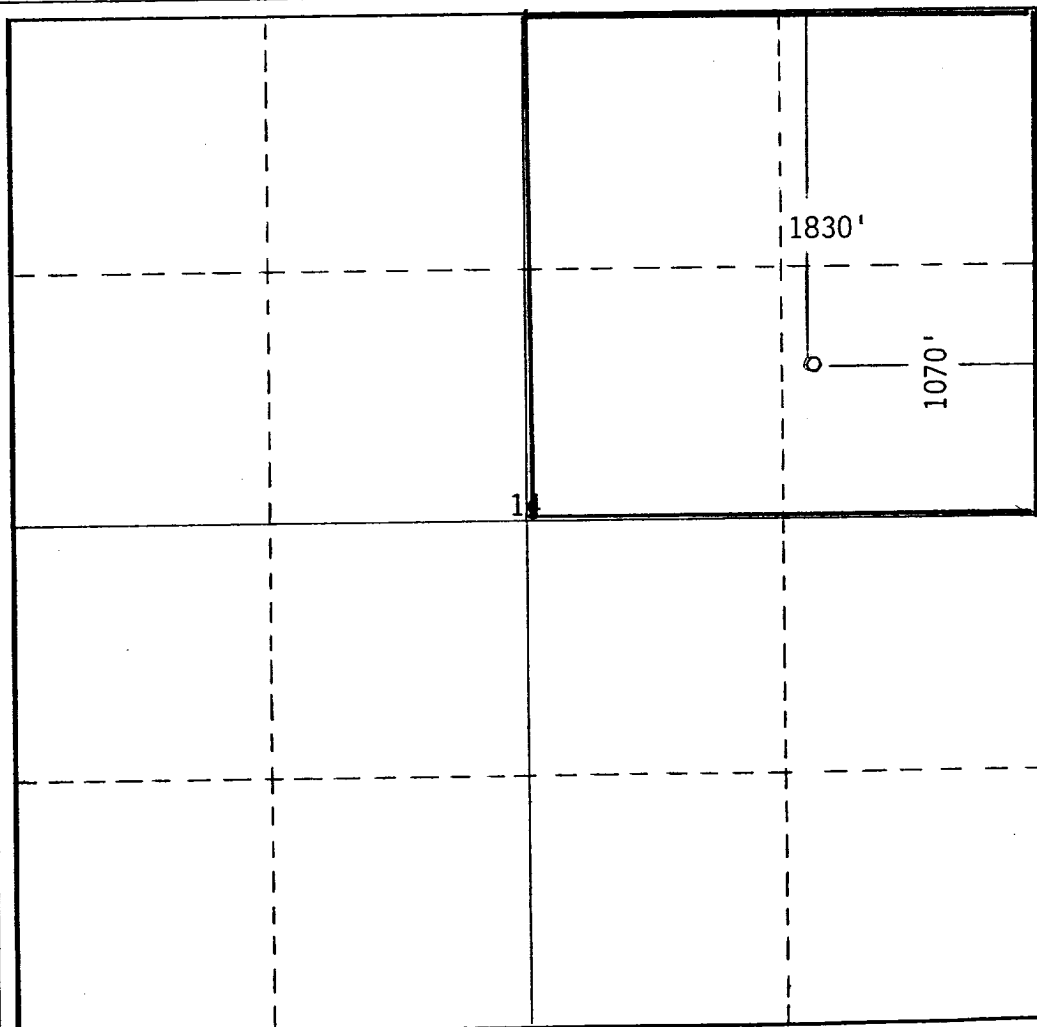
Operator <b>Jerome P. McHugh</b>		Lease <b>Chaco Plant</b>		Well No. <b>17R</b>
Unit Letter <b>H</b>	Section <b>14</b>	Township <b>26 North</b>	Range <b>12 West</b>	County <b>San Juan</b>
Actual Footage Location of Well: <b>1830'</b> feet from the <b>North</b> line and <b>1070'</b> feet from the <b>East</b> line				
Ground Level Elev. <b>6133' GL</b>	Producing Formation <b>Fruitland — PC</b>	Pool <b>WAW S. Callesos</b>	Dedicated Acreage: <b>160</b> Acres	

1. Outline the acreage dedicated to the subject well by colored pencil or hachure marks on the plat below.
2. If more than one lease is dedicated to the well, outline each and identify the ownership thereof (both as to working interest and royalty).
3. If more than one lease of different ownership is dedicated to the well, have the interests of all owners been consolidated by communitization, unitization, force-pooling, etc?

☐ Yes ☐ No If answer is "yes," type of consolidation \_\_\_\_\_

If answer is "no," list the owners and tract descriptions which have actually been consolidated. (Use reverse side of this form if necessary.) \_\_\_\_\_

No allowable will be assigned to the well until all interests have been consolidated (by communitization, unitization, forced-pooling, or otherwise) or until a non-standard unit, eliminating such interests, has been approved by the Commission.



CERTIFICATION

I hereby certify that the information contained herein is true and complete to the best of my knowledge and belief.

Name

**Sherman E. Dugan**

Position

**Agent**

Company

**Jerome P. McHugh**

Date

**8-14-80**

I hereby certify that the well location shown on this plat was plotted from field notes of actual surveys made by me or under my supervision, and that the same is true and correct to the best of my knowledge and belief.

Date Surveyed

**August 11, 1980**

Registered Professional Engineer and/or Land Surveyor

**Thomas A. Dugan**

Certificate No.

**2373**

0 330 660 990 1320 1650 1980 2310 2640 2000 1500 1000 500 0