

UNITED STATES
DEPARTMENT OF THE INTERIOR
BUREAU OF LAND MANAGEMENT

SUBMIT IN TRIPPLICATE*
(Other instructions on
reverse side)

Form approved.
Budget Bureau No. 1004-0136
Expires: December 31, 1991

APPLICATION FOR PERMIT TO DRILL OR DEEPEN

1A. TYPE OF WORK

DRILL ☒

DEEPEN ☒

b. TYPE OF WELL

OIL
WELL ☐

GAS
WELL ☒

OTHER

SINGLE
ZONE ☒

MULTIPLE
ZONE ☐

2. NAME OF OPERATOR

THOMPSON ENGINEERING & PRODUCTION CORPORATION 37581

3. ADDRESS AND TELEPHONE NO.

7415 E. Main Farmington, New Mexico 87402 (505) 327-4892

4. LOCATION OF WELL (Report location clearly and in accordance with BLM State Requirements*)
At surface

1830' FNL & 1070' FEL

At proposed prod. zone Same

14. DISTANCE IN MILES AND DIRECTION FROM NEAREST TOWN OR POST OFFICE*

18 miles south of Farmington

15. DISTANCE FROM PROPOSED*
LOCATION TO NEAREST
PROPERTY OR LEASE LINE, FT.
(Also to nearest drig. unit line, if any)

1070

18. DISTANCE FROM PROPOSED LOCATION*
TO NEAREST WELL, DRILLING, COMPLETED,
OR APPLIED FOR, ON THIS LEASE, FT.

500'

21. ELEVATIONS (Show whether DF, RT, GR, etc.)

6133' GL

This action is subject to technical and
procedural review pursuant to 43 CFR 3165.3
and appeal pursuant to 43 CFR 3165.4.

23. PROPOSED CASING AND CEMENTING PROGRAM

SIZE OF HOLE	GRADE SIZE OF CASING	WEIGHT PER FOOT	SETTING DEPTH	QUANTITY OF CEMENT
9 7/8	7" K-55	26	85	41 cu. ft.
6 1/8	4 1/2 K-55	10.5	1202	103 cu. ft. w/2% metasilicate &
				59 cu. ft. cl "B"
3 7/8	2 7/8 J-55	6.4	1400 - 1050'	25 cu. ft. cl "B"

Thompson Engineering & Production Corp. proposes to re-enter this P & A'D well to
test the Pictured Cliffs Formation at the above described location in accordance
with the attached drilling and surface use plan.

DRILLING OPERATIONS AUTHORIZED ARE
SUBJECT TO COMPLIANCE WITH ATTACHED
"GENERAL REQUIREMENTS"

This APD is also serving as an application to obtain BLM road and pipeline right-of-
way. The old paved road runs adjacent to the location. It continues across SE/SE,
SW/SE, SE/NW of Section 14, T26N, R12W where it joins County Road 7100. The pipe
ROW will be approximately 10' x 400' and run north to El Paso Field Service Gathering
System in the SE/NE of Section 14, T26N, R12W.

This location was previously archaeologically cleared in 1980. Please refer to San
Juan College Report 80 - SJC - 299 and BLM Report 80 (IV) #154.

IN ABOVE SPACE DESCRIBE PROPOSED PROGRAM. If proposal is to deepen, give data on present productive zone and proposed new productive zone. If proposal is to drill or
deepen directionally, give pertinent data on subsurface locations and measured and true vertical depths. Give blowout prevention program, if any.

SIGNED Paul C. Thompson
(This space for Federal or State office use)

TITLE President

DATE 3/18/97

PERMIT NO.

/S/ Duane W. Spencer

APPROVAL DATE

Application approval does not warrant or certify that the applicant holds legal or equitable title to those rights in the subject lease which would enable the applicant to conduct operations thereon.

CONDITIONS OF APPROVAL, IF ANY

NMOCD

APPROVED BY

/S/ Duane W. Spencer

TITLE

DATE

*See Instructions On Reverse Side

District I
PO Box 1998, Hobbs, NM 88241-1998
District II
PO Drawer DD, Artesia, NM 88211-4719
District III
1000 Rio Brazos Rd., Aztec, NM 87410
District IV
PO Box 2088, Santa Fe, NM 87504-2088

State of New Mexico
Energy, Minerals & Natural Resources Department

OIL CONSERVATION DIVISION
PO Box 2088
Santa Fe, NM 87504-2088

Form C-102
Revised February 10, 1994
Instructions on back
Submit to Appropriate District Office
State Lease - 4 Copies
Fee Lease - 3 Copies

☐ AMENDED REPORT

WELL LOCATION AND ACREAGE DEDICATION PLAT

API Number <i>30-045-24525</i>	Pool Code <i>77310</i> 87190	Well Name <i>SOUTH GALLAGHER</i> WAW Fruitland Sand/Pictured Cliffs
Property Code <i>21474</i>	Property Name Chaco Plant	Well Number 17R
OGRID No. 037581	Operator Name THOMPSON ENGINEERING & PRODUCTION CORPORATION	Elevation 6133'

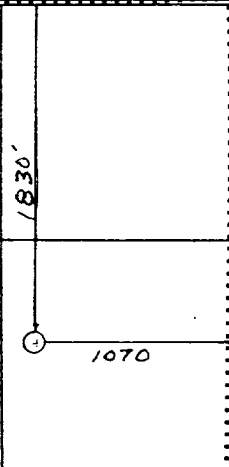
10 Surface Location

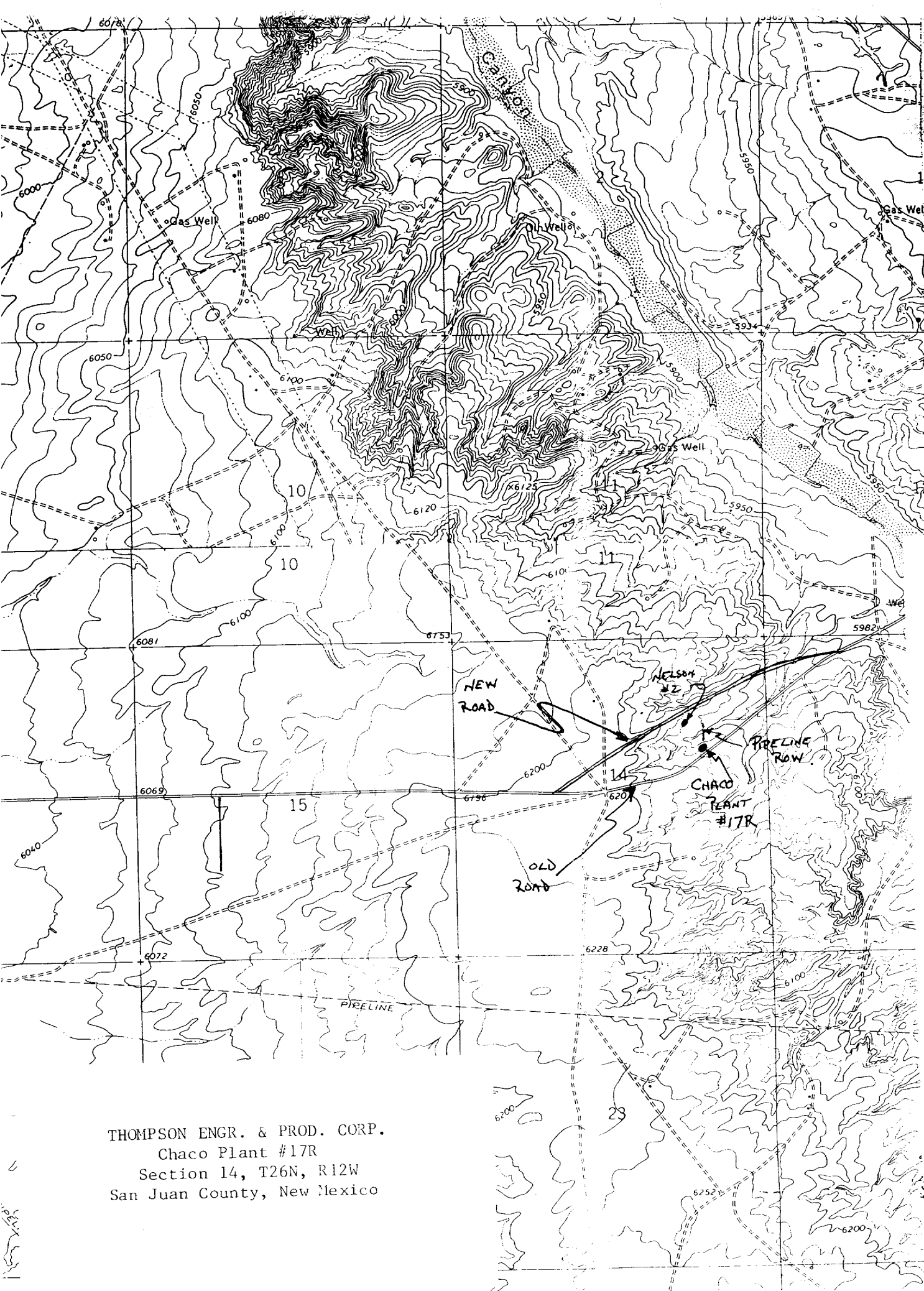
UL or lot no.	Section	Township	Range	Lot Ida	Feet from the	North/South line	Feet from the	East/West line	County
H	14	26N	12W		1830	North	1070	East	San Juan

11 Bottom Hole Location If Different From Surface

UL or lot no.	Section	Township	Range	Lot Ida	Feet from the	North/South line	Feet from the	East/West line	County
Dedicated Acres 160	Joint or Infill N	Consolidation Code	Order No.						

NO ALLOWABLE WILL BE ASSIGNED TO THIS COMPLETION UNTIL ALL INTERESTS HAVE BEEN CONSOLIDATED
OR A NON-STANDARD UNIT HAS BEEN APPROVED BY THE DIVISION

16 RECEIVED AUG - 4 1997 OIL CON. DIV. DIST. 3		17 OPERATOR CERTIFICATION I hereby certify that the information contained herein is true and complete to the best of my knowledge and belief. <i>Paul C. Thompson</i> Signature Paul C. Thompson Printed Name President Title 3/18/97 Date
		18 SURVEYOR CERTIFICATION I hereby certify that the well location shown on this plat was plotted from field notes of actual surveys made by me or under my supervision, and that the same is true and correct to the best of my belief. Original on file Date of Survey Signature and Seal of Professional Surveyor Certificate Number



THOMPSON ENGR. & PROD. CORP.
Chaco Plant #17R
Section 14, T26N, R12W
San Juan County, New Mexico