

UNITED STATES  
DEPARTMENT OF THE INTERIOR  
GEOLOGICAL SURVEY

## APPLICATION FOR PERMIT TO DRILL, DEEPEN, OR PLUG BACK

## 1a. TYPE OF WORK

DRILL ☒DEEPEN ☐PLUG BACK ☐

## b. TYPE OF WELL

OIL  
WELL ☐GAS  
WELL ☒OTHER ☐SINGLE  
ZONE ☒MULTIPLE  
ZONE ☐

## 2. NAME OF OPERATOR

J. Gregory Merrion &amp; Robert L. Bayless

## 3. ADDRESS OF OPERATOR

P.O. Box 1541, Farmington, NM 87401

4. LOCATION OF WELL (Report location clearly and in accordance with any State requirements.)\*  
At surface 1800 FNL & 1850 FWL

At proposed prod. zone same

## 14. DISTANCE IN MILES AND DIRECTION FROM NEAREST TOWN OR POST OFFICE\*

Approx. 17 miles south of Farmington, NM

## 15. DISTANCE FROM PROPOSED\*

LOCATION TO NEAREST  
PROPERTY OR LEASE LINE, FT.  
(Also to nearest drig. unit line, if any)

1800 ft.

## 16. NO. OF ACRES IN LEASE

160

17. NO. OF ACRES ASSIGNED  
TO THIS WELL

160

## 18. DISTANCE FROM PROPOSED LOCATION\*

TO NEAREST WELL, DRILLING, COMPLETED,  
OR APPLIED FOR, ON THIS LEASE, FT.

1060 ft.

## 19. PROPOSED DEPTH

1300 ft.

## 20. ROTARY OR CABLE TOOLS

Rotary

## 21. ELEVATIONS (Show whether DF, RT, GR, etc.)

6023' GL

## 22. APPROX. DATE WORK WILL START\*

April 30, 1980

## 23.

## PROPOSED CASING AND CEMENTING PROGRAM

SIZE OF HOLE	SIZE OF CASING	WEIGHT PER FOOT	SETTING DEPTH	QUANTITY OF CEMENT
9-3/4"	7"	23 lb.	90'	30 sacks <u>CIRCULATE</u>
5"	2-7/8"	6.4 lb.	1300'	150 sacks circulated to surface

Will drill 9-3/4" hole to 9- ft. and set 90 ft. of 7", 23 lb./ft., J-55 used casing with 30 sacks Class H cement. Will drill 5" hole to 1300 ft. and run 1300 ft. of 2-7/8" EUE C-45 used casing and cement with 150 sacks Class H with 2% D-79 cement, circulated to surface. No abnormal pressures or temperatures are anticipated. Circulating medium will be clear water, natural mud, and water loss control additive. Will run Induction and Density logs. Blowout preventer schematic attached. The gas from this formation is not dedicated.

## ESTIMATED TOPS

## FORMATION

## Depth

## Content

Ojo Alamo

Surface

Farmington

450'

Fruitland

913'

Pic. Cliffs

1190'

Natural Gas

IN ABOVE SPACE DESCRIBE PROPOSED PROGRAM: If proposal is to deepen or plug back, give data on present productive zone and proposed new productive zone. If proposal is to drill or deepen directionally, give pertinent data on subsurface locations and measured and true vertical depths. Give blowout preventer program, if any.

## 24.

SIGNED

(This space for Federal or State office use)

DISTRICT ENGINEER

APPROVAL DATE

DATE April 14, 1980

APPROVED BY

CONDITIONS OF APPROVAL, IF ANY:

NMOC

\*See Instructions On Reverse Side

30-145-34612

5. LEASE DESIGNATION AND SERIAL NO.

SF 080238-A

6. IF INDIAN, ALLOTTEE OR TRIBE NAME

7. UNIT AGREEMENT NAME

8. FARM OR LEASE NAME

Chaco Ltd.

9. WELL NO.

3

10. FIELD AND POOL, OR WILDCAT

WAW Tr./Pic. Cliffs

11. SEC., T., R., M., OR BLK.  
AND SURVEY OR AREA

Sec. 12, T26N, R13W

12. COUNTY OR PARISH 13. STATE

San Juan

N.M.

All distances must be from the outer boundaries of the Section

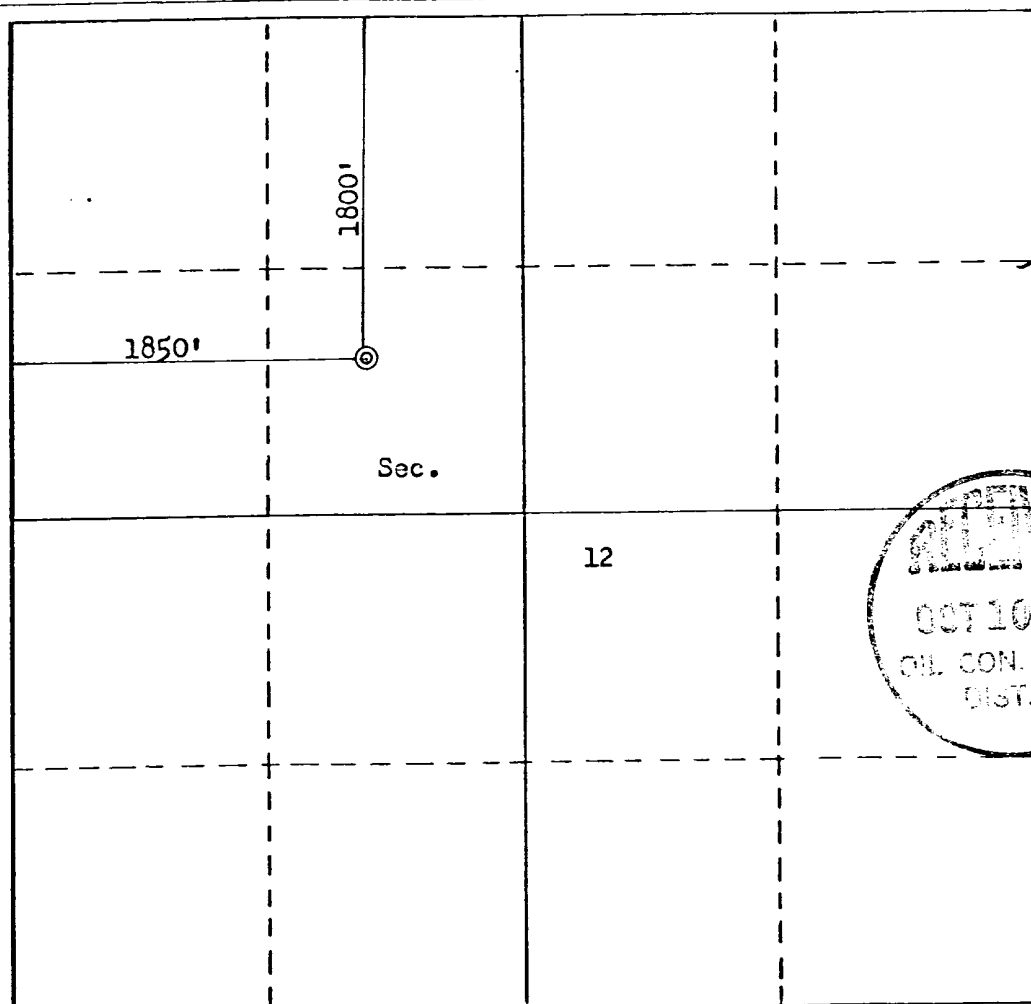
Operator <b>MERRION &amp; BAYLESS</b>		Lease <b>CHACO LIMITED</b>		Well No. <b>3</b>
Unit Letter <b>F</b>	Section <b>12</b>	Township <b>26N</b>	Range <b>13W</b>	County <b>San Juan</b>
Actual Footage Location of Well:				
1800 feet from the North line and		1850 feet from the West line		
Ground Level Elev. <b>6023</b>	Producing Formation <b>Pic. Cliffs</b>	Pool <b>WAW Fruitland/Pic. Cliffs</b>	Dedicated Acreage: <b>160</b> Acres	

1. Outline the acreage dedicated to the subject well by colored pencil or hachure marks on the plat below.
2. If more than one lease is dedicated to the well, outline each and identify the ownership thereof (both as to working interest and royalty).
3. If more than one lease of different ownership is dedicated to the well, have the interests of all owners been consolidated by communitization, unitization, force-pooling, etc?

☐ Yes ☐ No If answer is "yes," type of consolidation \_\_\_\_\_

If answer is "no," list the owners and tract descriptions which have actually been consolidated. (Use reverse side of this form if necessary.) \_\_\_\_\_

No allowable will be assigned to the well until all interests have been consolidated (by communitization, unitization, forced-pooling, or otherwise) or until a non-standard unit, eliminating such interests, has been approved by the Commission.



CERTIFICATION

I hereby certify that the information contained herein is true and complete to the best of my knowledge and belief.

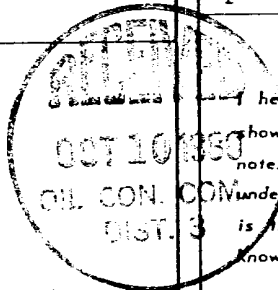
*Steven S. Dunn*

Name  
Steven S. Dunn

Position  
Engineer

Company  
Merrion & Bayless

Date  
April 14, 1980



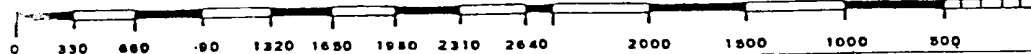
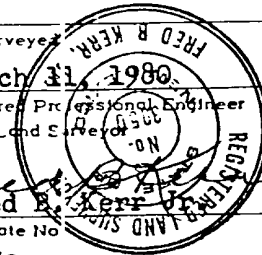
I hereby certify that the well location shown on this plat was plotted from field notes of actual surveys made by me or under my supervision, and that the same is true and correct to the best of my knowledge and belief.

Date Surveyed  
March 31, 1980

Registered Professional Engineer and/or Land Surveyor

*Fred B. Kerr*

Certificate No.  
3950



# SURFACE WELL CONTROL EQUIPMENT

MERRION & BAYLESS  
 Chaco Ltd. #3  
 Section 12, T26N, R13W  
 San Juan County, New Mexico

MERRION~BAYLESS

DRAWN BY

REVISED

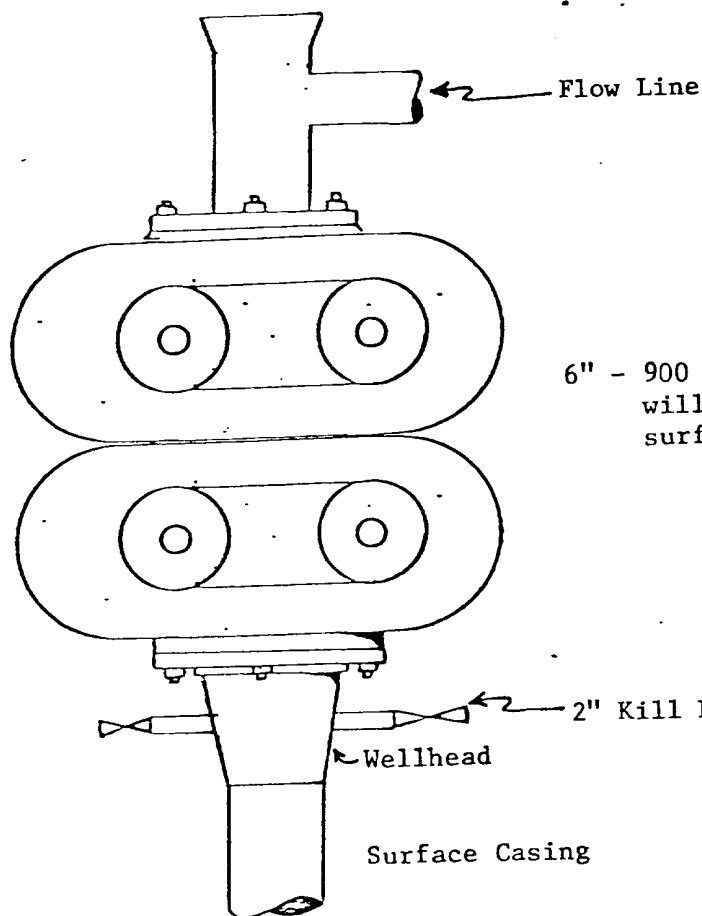
APPROVED BY:

SCALE:

DATE:

SCHEMATIC

DRAWING NUMBER



6" - 900 Series Mechanical Double Ram BOP which  
 will be tested to 500 PSIG after setting of  
 surface casing

2" Kill Line with 2000 WOG Ball Valve

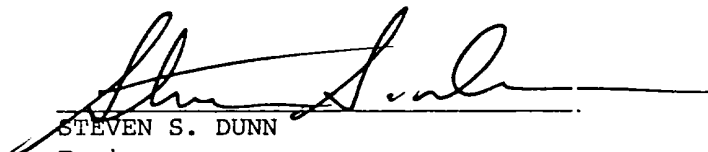
Surface Casing

MERRION & BAYLESS  
Chaco Ltd. #3  
Section 12, T26N, R13W  
San Juan County, New Mexico

- 1 & 2. A topographical map is attached showing location of drillsite and access road to location; new roads are color coded on the location map. The terrain is relatively flat and no improvements are planned on existing roads. A drive in truck mounted drilling rig will be used and will be driven in to the location with our road work. Our planned access road will be twelve feet in width, and will follow the existing terrain. No turnouts, culverts or cuts and fills are anticipated on the proposed access. In addition, natural drainage and surfacing material will be used.
3. Wells within one mile radius are shown on the topographical map.
4. A. Existing facilities owned or controlled by the Operator and shown on the attached map are as follows: wellheads.  
B. No new facilities are contemplated.  
C. Disturbed areas will be reseeded per BLM specifications.
5. A. Water will be hauled from the San Juan River.  
B. Truck will haul water on proposed access route shown.
6. No construction materials will be used.
7. Methods of disposal of waste materials:  
A. Cuttings will be buried in drilling pit.  
B. Drilling fluids will be buried in drilling pit.  
C. No produced fluids are anticipated.  
D. Sewage will be buried.  
E. Garbage and other waste material will be buried.  
F. Operator will clean up, fill, and level pits and reseed location per BLM specifications.
8. No ancillary facilities.
9. Wellsite layout attached.
10. Restoration of drillsite -- pits will be filled and leveled and reseeded per BLM specifications immediately after completion.
11. Other information: the lease is on Navajo Tribal surface land. The drillsite is fairly level, arid land with very little vegetation. There is no other surface use or facilities existent. An archeological survey statement will be furnished.
12. Operator representative: Robert L. Bayless (505) 325-5093  
P.O. Box 1541  
Farmington, NM 87401
13. Certification:

I hereby certify that I, or persons under my direct supervision, have inspected the proposed drillsite and access route; that I am familiar with the conditions which presently exist; that the statements made in this plan are, to the best of my knowledge, true and correct; and, that the work associated with the operations proposed herein will be performed by Merrion & Bayless and its contractors and subcontractors in conformity with this plan and the terms and conditions under which it is approved.

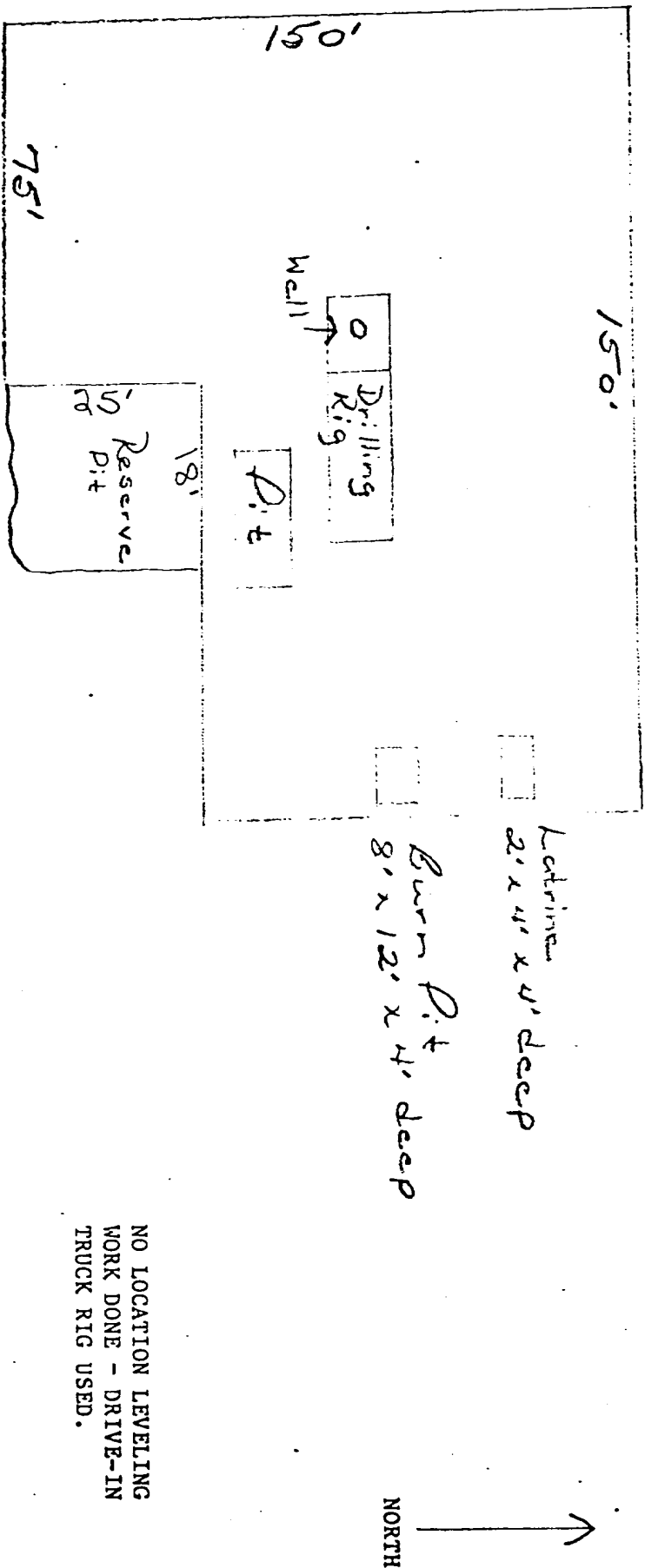
4/15/80  
Date

  
STEVEN S. DUNN  
Engineer  
Merrion & Bayless

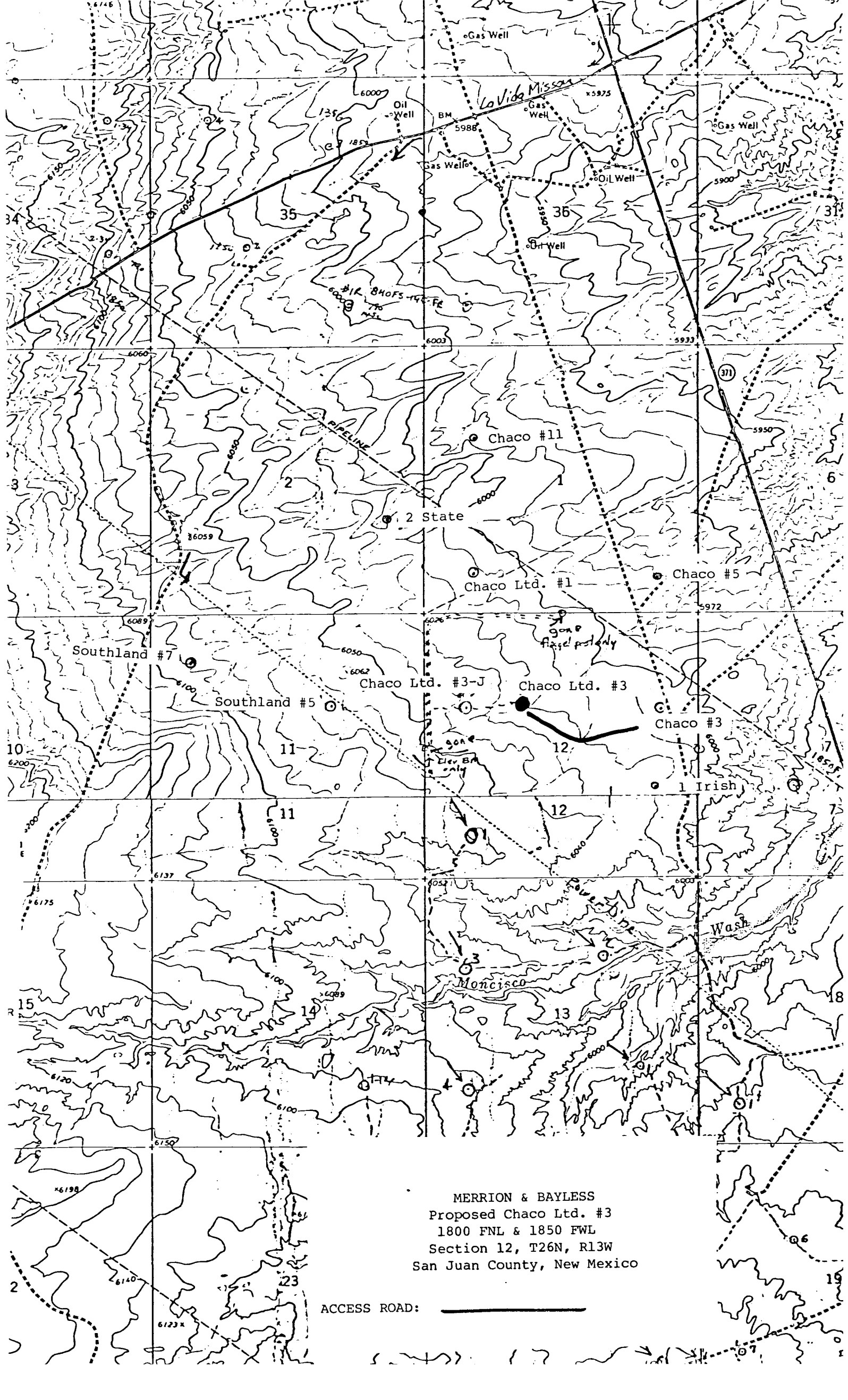
LOCATION AND EQUIPMENT LAY-OUT

Shallow

MERRION & BAYLESS  
Chaco Ltd. #3  
Section 12, T26N, R13W  
San Juan County, New Mexico



NO LOCATION LEVELING  
WORK DONE - DRIVE-IN  
TRUCK RIG USED.



MERRION & BAYLESS  
Proposed Chaco Ltd. #3  
1800 FNL & 1850 FWL  
Section 12, T26N, R13W  
San Juan County, New Mexico

ACCESS ROAD: 