

UNITED STATES  
DEPARTMENT OF THE INTERIOR  
GEOLOGICAL SURVEY

30-045-24934

## APPLICATION FOR PERMIT TO DRILL, DEEPEN, OR PLUG BACK

## 1a. TYPE OF WORK

DRILL ☒DEEPEN ☐PLUG BACK ☐

## b. TYPE OF WELL

OIL  
WELL ☐GAS  
WELL ☒

OTHER

SINGLE  
ZONE ☒MULTIPLE  
ZONE ☐

## 2. NAME OF OPERATOR

Jerome P. McHugh

## 3. ADDRESS OF OPERATOR

Box 208, Farmington, NM 87401

## 4. LOCATION OF WELL (Report location clearly and in accordance with any State requirements.)\*

At surface

830' FNL - 2070' FWL

At proposed prod. zone

## 14. DISTANCE IN MILES AND DIRECTION FROM NEAREST TOWN OR POST OFFICE\*

15 miles South of Bloomfield, NM

## 15. DISTANCE FROM PROPOSED\*

LOCATION TO NEAREST  
PROPERTY OR LEASE LINE, FT.  
(Also to nearest drlg. unit line, if any)

830'

## 16. NO. OF ACRES IN LEASE

760

17. NO. OF ACRES ASSIGNED  
TO THIS WELL

160 &amp; 160

## 18. DISTANCE FROM PROPOSED LOCATION\*

TO NEAREST WELL, DRILLING, COMPLETED,  
OR APPLIED FOR, ON THIS LEASE, FT.

## 19. PROPOSED DEPTH

1300'

## 20. ROTARY OR CABLE TOOLS

Rotary

## 21. ELEVATIONS (Show whether DF, RT, GR, etc.)

5990' GR

## 22. APPROX. DATE WORK WILL START\*

ASAP

## 23. PROPOSED CASING AND CEMENTING PROGRAM

SIZE OF HOLE	SIZE OF CASING	WEIGHT PER FOOT	SETTING DEPTH	QUANTITY OF CEMENT
6-1/4"	5-1/2"	14#	30' 90	55 sx
4-3/4"	2-7/8"	6.4#	1300'	126 sx

Plan to drill 4-3/4" hole w/ minimum mud to 1300' to test P.C. formation.

Plan to use Regan BOP, 2000 psi working pressure and will install after setting surface pipe and pressure test to 1000 psi.

GAS DEDICATED



IN ABOVE SPACE DESCRIBE PROPOSED PROGRAM: If proposal is to deepen or plug back, give data on present productive zone and proposed new productive zone. If proposal is to drill or deepen directionally, give pertinent data on subsurface locations and measured and true vertical depths. Give blowout preventer program, if any.

24.

SIGNED

Jerome P. McHugh Jr.

TITLE

Agent

DATE

2-11-81

PERMIT NO.

APPROVAL DATE

APPROVED BY

TITLE

CONDITIONS OF APPROVAL, IF ANY:

APPROVED

MAR 13 1981

James J. Lewis  
DISTRICT ENGINEER

\*See Instructions On Reverse Side

All distances must be from the outer boundaries of the Section.

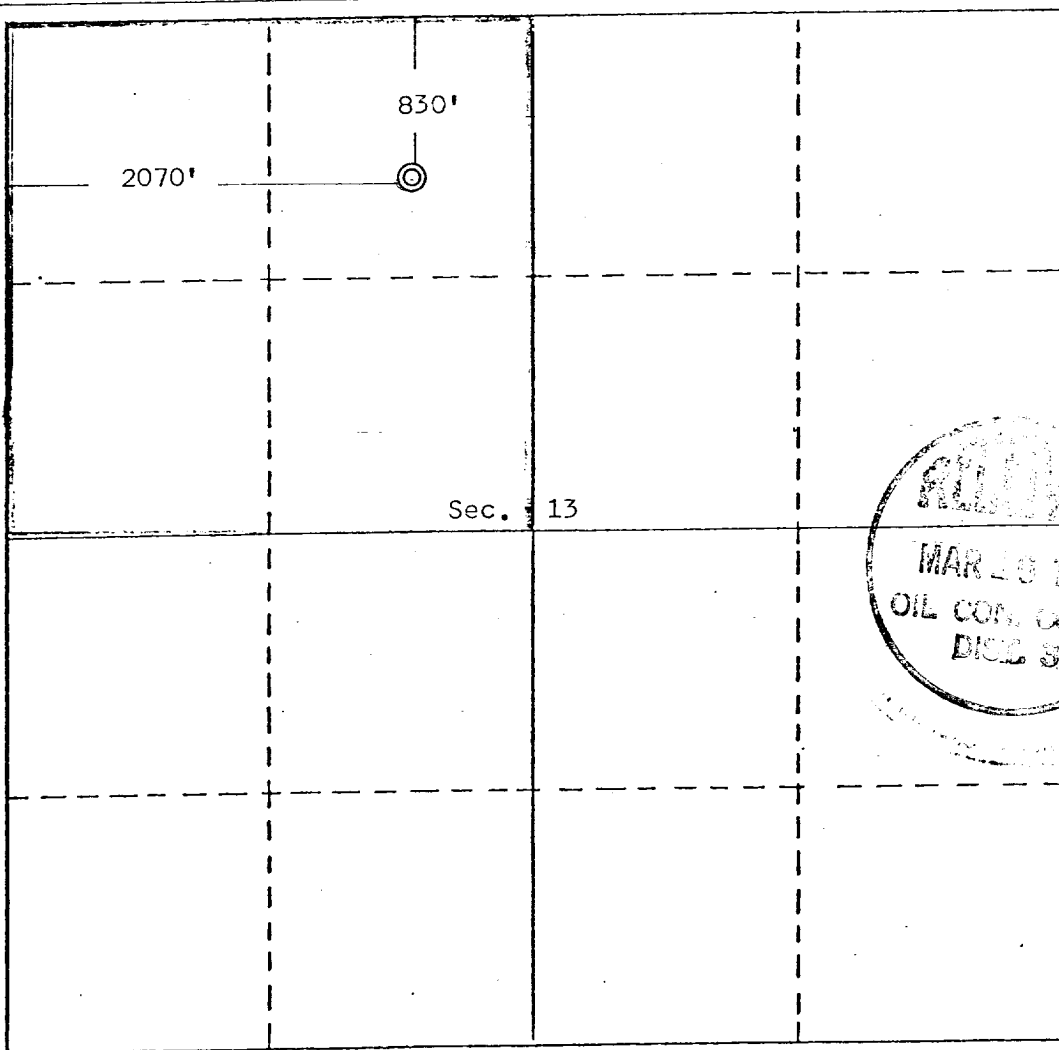
Operator Jerome P. McHugh		Lease Chaco Plant		Well No. 18-R	
Unit Letter C	Section 13	Township 25 North	Range 12 West	County San Juan	
Actual Footage Location of Well: 830 feet from the North line and 2070 feet from the West line					
Ground Level Elev. 5990	Producing Formation Pictured Cliffs	Pool P.C. Undesignated S. Gallegos--Fruitland E		Dedicated Acreage: 160 Acres	

1. Outline the acreage dedicated to the subject well by colored pencil or hachure marks on the plat below.
2. If more than one lease is dedicated to the well, outline each and identify the ownership thereof (both as to working interest and royalty).  
NA
3. If more than one lease of different ownership is dedicated to the well, have the interests of all owners been consolidated by communitization, unitization, force-pooling, etc?

☐ Yes ☐ No If answer is "yes," type of consolidation \_\_\_\_\_

If answer is "no," list the owners and tract descriptions which have actually been consolidated. (Use reverse side of this form if necessary.) \_\_\_\_\_

No allowable will be assigned to the well until all interests have been consolidated (by communitization, unitization, forced-pooling, or otherwise) or until a non-standard unit, eliminating such interests, has been approved by the Division.



CERTIFICATION

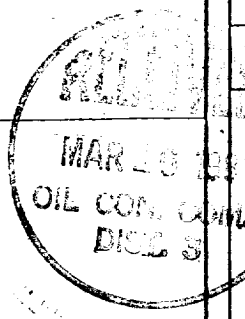
I hereby certify that the information contained herein is true and complete to the best of my knowledge and belief.

Name Jerry McHugh Jr.  
Jerome P. McHugh Jr.

Position  
Agent

Company  
Dugan Production Corp.

Date  
2-11-81

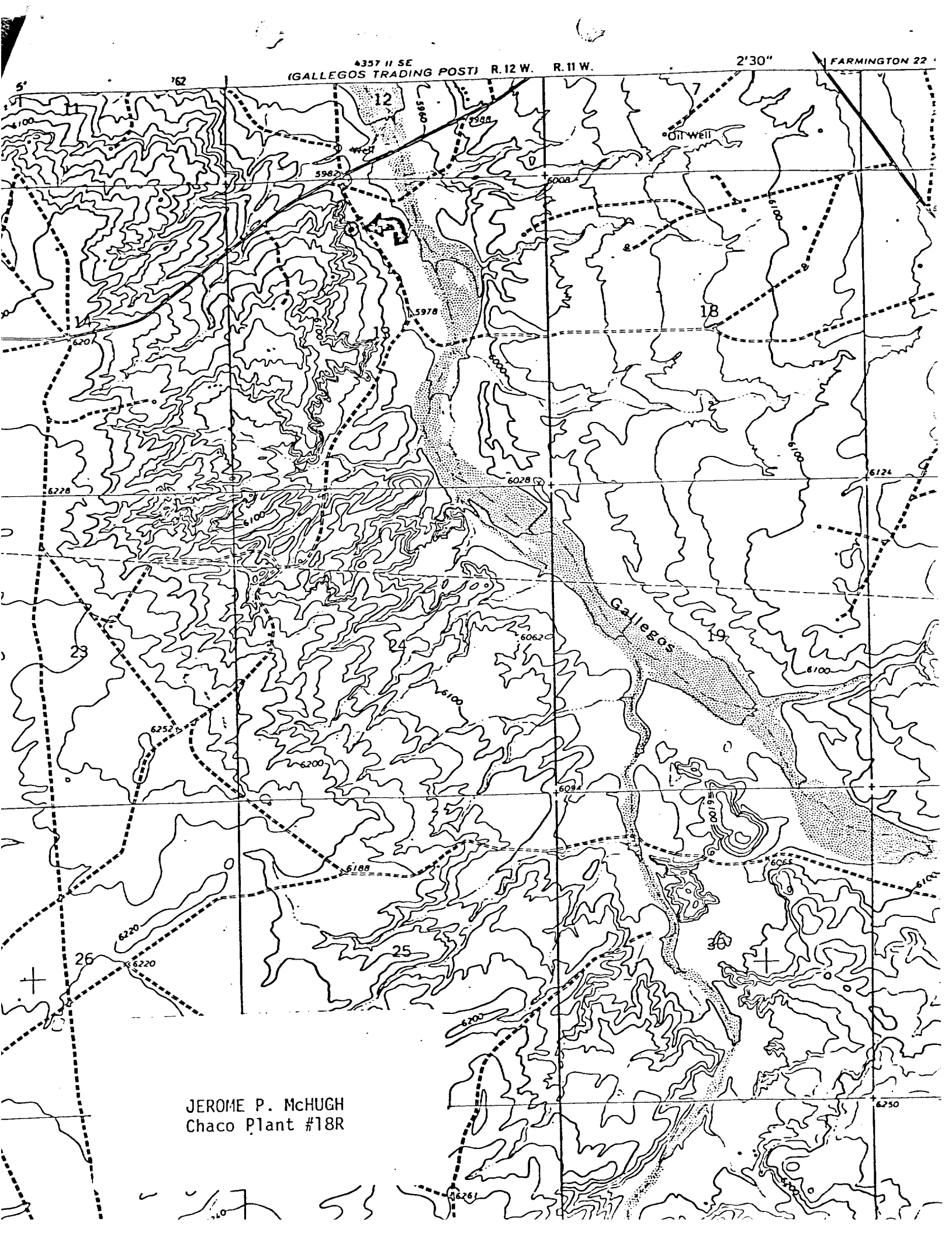


I hereby certify that the location shown is the true location of the well and that the same is true and correct to the best of my knowledge and belief.

Date Surveyed  
January 13, 1981

Registered Professional Engineer and/or Land Surveyor

Edgar L. Risenhoover  
Certificate No. 5979  
Edgar L. Risenhoover, L.S.



JEROME P. McHUGH  
Chaco Plant #18R