

UNITED STATES
DEPARTMENT OF THE INTERIOR
BUREAU OF LAND MANAGEMENT

APPLICATION FOR PERMIT TO DRILL OR DEEPEN

1A. TYPE OF WORK

DRILL ☒

DEEPEN ☐

b. TYPE OF WELL

OIL
WELL ☐

GAS
WELL ☒

OTHER Coal Seam

SINGLE
ZONE ☒

MULTIPLE
ZONE ☐

2. NAME OF OPERATOR

Amoco Production Company Attn: J.L. Hampton

3. ADDRESS AND TELEPHONE NO.

P.O. Box 800 Denver, CO 80201

4. LOCATION OF WELL (Report location clearly and in accordance with any State requirements.)*

At surface

2370' FSL, 1720' FWL, NE/SW

At proposed prod. zone

14. DISTANCE IN MILES AND DIRECTION FROM NEAREST TOWN OR POST OFFICE*

37 miles - Aztec, NM

15. DISTANCE FROM PROPOSED*

LOCATION TO NEAREST
PROPERTY OR LEASE LINE, FT.
(Also to nearest drlg. unit line, if any)

1720'

16. NO. OF ACRES IN LEASE

320.00

17. NO. OF ACRES ASSIGNED
TO THIS WELL

320 acres W/2

18. DISTANCE FROM PROPOSED LOCATION*

TO NEAREST WELL, DRILLING, COMPLETED,
OR APPLIED FOR, ON THIS LEASE, FT.

19. PROPOSED DEPTH

3511' TD

20. ROTARY OR CABLE TOOLS

Rotary

21. ELEVATIONS (Show whether DF, RT, GR, etc.)

6839' GR

22. APPROX. DATE WORK WILL START*

23.

PROPOSED CASING AND CEMENTING PROGRAM

DRILLING OPERATIONS AUTHORIZED ARE
SUBJECT TO COMPLIANCE WITH ATTACHED

| SIZE OF HOLE | GRADE, SIZE OF CASING | WEIGHT PER FOOT | SETTING DEPTH | "GENERAL REQUIREMENTS" |
|--------------|-----------------------|-----------------|---------------|----------------------------|
| 12 1/4" | 8 5/8" | 24# | 250' | 250 cf (cement to surface) |
| 7 7/8" | 5 1/2" | 17# | 3511' (TD) | 983 cf (cement to surface) |

Notice of staking was submitted: 10/30/90

Lease Description:

T28N-R7W:

Sec. 8: NE/4, SW/4

To replace APD
Expired on 5/30/92
30-039-25033

RECEIVED
JUL 06 1992
OIL CON. DIV.
DIST. 3

RECEIVED
BLM
52 JUN 25 PM 1:25
019 FARM LOSTON, N.M.

IN ABOVE SPACE DESCRIBE PROPOSED PROGRAM: If proposal is to deepen, give data on present productive zone and proposed new productive zone. If proposal is to drill or deepen directionally, give pertinent data on subsurface locations and measured and true vertical depths. Give blowout preventer program, if any.

24.

SIGNED J.L. Hampton / Weh

TITLE Sr. Staff Admin Supv

DATE 6/22/92

(This space for Federal or State office use)

PERMIT NO. _____

APPROVAL DATE _____

Application approval does not warrant or certify that the applicant holds legal or equitable title to those rights in the subject lease which would entitle the applicant to conduct operations thereon.
CONDITIONS OF APPROVAL, IF ANY:

APPROVED BY [Signature]

TITLE _____

DATE _____

*See Instructions On Reverse Side NMOCD

Title 18 U.S.C. Section 1001, makes it a crime for any person knowingly and willfully to make to any department or agency of the United States any false, fictitious or fraudulent statements or representations or to any matter within the jurisdiction of such department or agency.

APPROVED
AS AMENDED

JUL 01 1992

AREA MANAGER

Submit to Appropriate
District Office
State Lease - 4 copies
Fee Lease - 3 copies

State of New Mexico
Energy, Minerals and Natural Resources Department

Form C-102
Revised 1-1-89

OIL CONSERVATION DIVISION

P.O. Box 2088
Santa Fe, New Mexico 87504-2088

RECEIVED
BLM

92 JUN 25 PM 1:26

DISTRICT I
P.O. Box 1980, Hobbs, NM 88240

DISTRICT II
P.O. Drawer DD, Artesia, NM 88210

DISTRICT III
1000 Rio Brazos Rd., Aztec, NM 87410

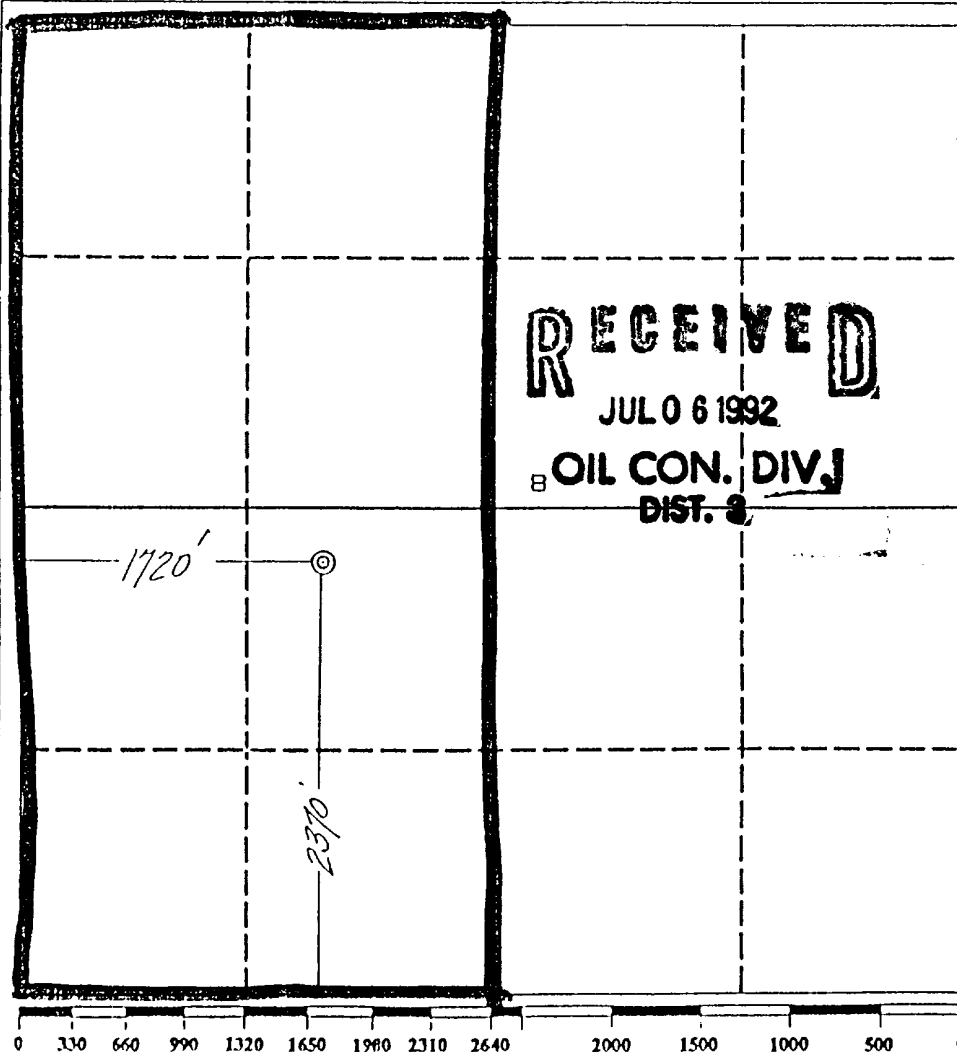
WELL LOCATION AND ACREAGE DEDICATION PLAT IS FARMINGTON, N.M.

All Distances must be from the outer boundaries of the section

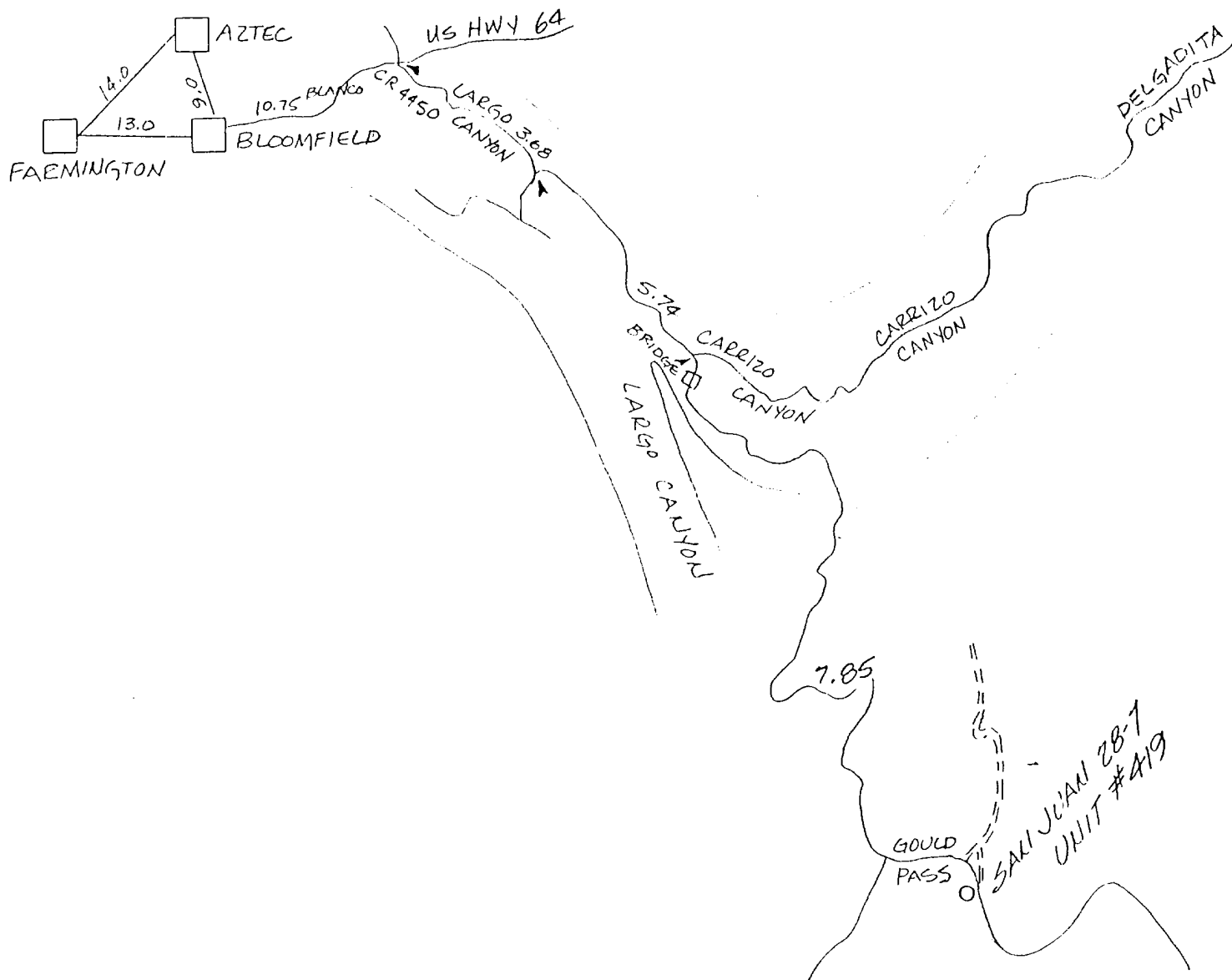
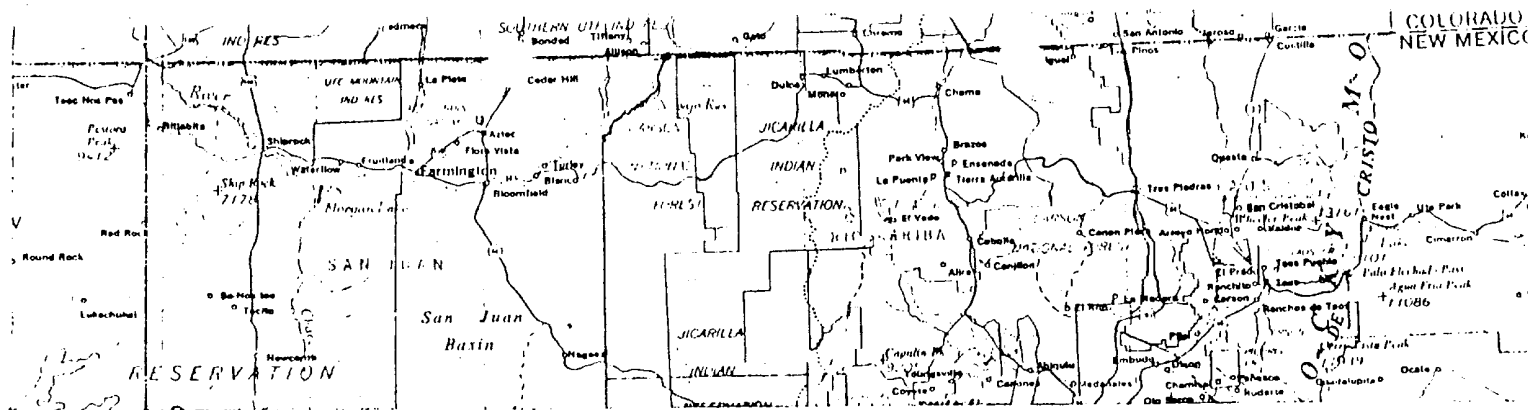
| | | | | | |
|--------------------------------------|--------------|----------------------|-----------------------------|----------------------|-------------------|
| Operator AMOCO PRODUCTION COMPANY | | | Lease SAN JUAN 28-7 UNIT | | Well No. # 419 |
| Unit Letter K | Section B | Township 27 NORTH | Range 7 WEST | County RIO ARriba | |

| | | | | | |
|--|---------------------------------------|--|----------------------------------|--|--|
| Actual Footage Location of Well: 2370 feet from the SOUTH line and 1720 feet from the WEST line | | | | | |
| Ground level Elev. 6839 | Producing Formation Fruitland Coal | | Pool Basin Fruitland Coal Gas | Dedicated Acreage: 4 1/2 Acres 320.00 | |

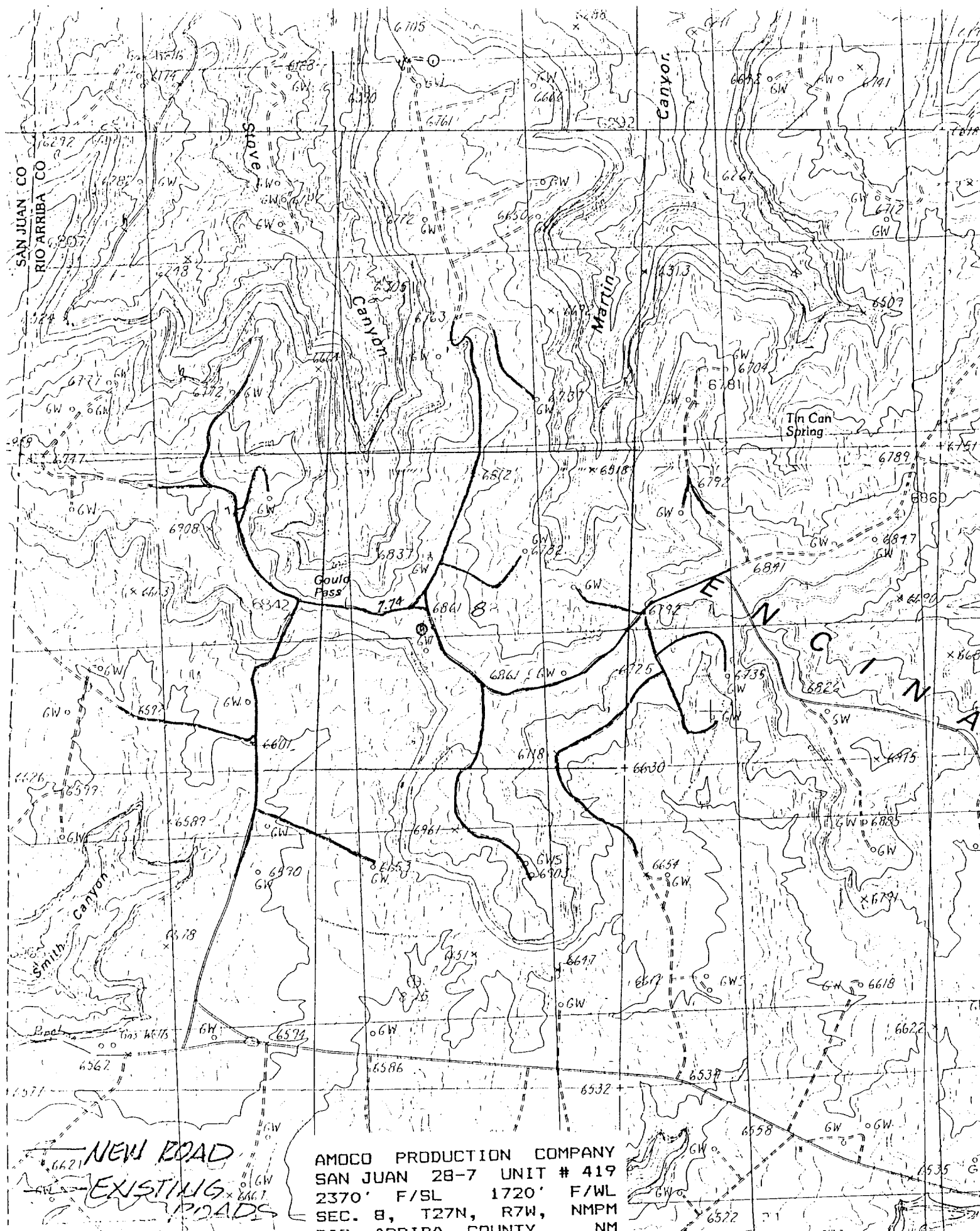
- Outline the acreage dedicated to the subject well by colored pencil or hatchure marks on the plat below.
- If more than one lease is dedicated to the well, outline each and identify the ownership thereof (both as to working interest and royalty).
- If more than one lease of different ownership is dedicated to the well, have the interest of all owners been consolidated by communization, unitization, force-pooling, etc?
☐ Yes ☐ No If answer is "yes" type of consolidation _____
If answer is "no" list the owners and tract descriptions which have actually been consolidated. (Use reverse side of this form if necessary.) _____
No allowable will be assigned to the well until all interests have been consolidated (by communization, unitization, forced-pooling, or otherwise) or until a non-standard unit, eliminating such interest, has been approved by the Division.



| | |
|--|---|
| OPERATOR CERTIFICATION I hereby certify that the information contained herein is true and complete to the best of my knowledge and belief. | |
| Signature | <i>G. Hampton</i> |
| Printed Name | J. L. Hampton |
| Position | Sr Staff Admin Supr |
| Company | Amoco Prod |
| Date | 10-26-90 |
| SURVEYOR CERTIFICATION I hereby certify that the well location shown on this plat was plotted from field notes of actual surveys made by me or under my supervision, and that the same is true and correct to the best of my knowledge and belief. | |
| Date Surveyed October 4, 1990 | |
| Signature & Seal of Professional Surveyor | <i>GARY D. VANN</i> NEW MEXICO 7016 |
| Gary D. Vann | 7016 |



SAN JUAN 28-7 UNIT # 419
 2370' F/SL 1720' F/WL
 SEC. 8, T27N, R7W, NMPM
 RAIL POINT: 180 mi - Montrose, Co.
 MUD PCINT: 37 mi - Aztec, NM
 CEMENT PCINT: 41 mi - Farmington



AMOCO PRODUCTION COMPANY
SAN JUAN 28-7 UNIT # 419
2370' F/SL 1720' F/WL
SEC. 8, T27N, R7W, NMPM
RIO ARriba COUNTY NM