

UNITED STATES  
DEPARTMENT OF THE INTERIOR  
GEOLOGICAL SURVEY

SUNDRY NOTICES AND REPORTS ON WELLS

(Do not use this form for proposals to drill or to deepen or plug back to a different reservoir. Use Form 9-331-C for such proposals.)

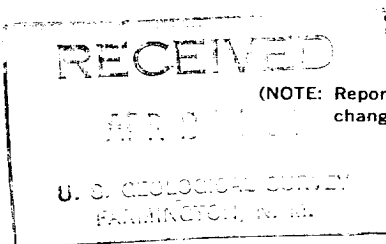
1. oil ☐ well gas ☒ well other ☐
2. NAME OF OPERATOR  
Supron Energy Corporation
3. ADDRESS OF OPERATOR  
P.O. Box 808, Farmington, NM 87401
4. LOCATION OF WELL (REPORT LOCATION CLEARLY. See space 17 below.)  
AT SURFACE: 1820 ft/N; 1100 ft./E line  
AT TOP PROD. INTERVAL: Same as above  
AT TOTAL DEPTH: Same as above
16. CHECK APPROPRIATE BOX TO INDICATE NATURE OF NOTICE, REPORT, OR OTHER DATA

REQUEST FOR APPROVAL TO:

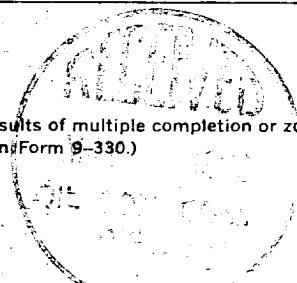
- TEST WATER SHUT-OFF ☐  
FRACTURE TREAT ☐  
SHOOT OR ACIDIZE ☐  
REPAIR WELL ☐  
PULL OR ALTER CASING ☐  
MULTIPLE COMPLETE ☐  
CHANGE ZONES ☐  
ABANDON\* ☐  
(other) Ran 4 1/2" casing

SUBSEQUENT REPORT OF:

- ☐  
☐  
☐  
☐  
☐  
☐  
☐  
☐  
☐  
☐  
☒



(NOTE: Report results of multiple completion or zone change on Form 9-330.)



17. DESCRIBE PROPOSED OR COMPLETED OPERATIONS (Clearly state all pertinent details, and give pertinent dates, including estimated date of starting any proposed work. If well is directionally drilled, give subsurface locations and measured and true vertical depths for all markers and zones pertinent to this work.)\*

1. Drilled 7 7/8" hole with mud to total depth of 6711 ft. R.K.B. Total depth was reached on 4/22/82.
2. Ran Induction Electric and Compensated Density logs.
3. Ran 165 joints of 4 1/2", 10.50#, K-55 casing and set at 6691 ft. R.K.B. with float collar at 6634 ft. R.K.B. Stage collars were set at 4495 ft. and 2099 ft. R.K.B.
4. Cemented first stage with 350 sacks of 50-50 Pozmix with 2% gel and 10% salt. Plug down at 3:40 p.m. 4/23/82. Cemented second stage with 250 sacks of 50-50 Pozmix with 8% gel and 10 lb. of Gilsonite per sack and 50 sacks of Class "B" with 2% Calcium Chloride. Plug down at 4:50 p.m. 4/23/82. Cemented third stage with 350 sacks of 65-35-6 with 10 lb. of Gilsonite per sack and 100 sacks of 50-50 Pozmix with 2% Gel. Plug down at 8:15 p.m. 4/23/82.
5. Ran temperature survey and found cement top at 125 ft. R.K.B.

Subsurface Safety Valve: Manu. and Type \_\_\_\_\_ Set @ \_\_\_\_\_ Ft.

18. I hereby certify that the foregoing is true and correct

SIGNED Kenneth E. Roddy TITLE Production Supt. DATE April 27, 1982  
Kenneth E. Roddy

(This space for Federal or State office use)

APPROVED BY \_\_\_\_\_ TITLE \_\_\_\_\_ DATE \_\_\_\_\_  
CONDITIONS OF APPROVAL, IF ANY:

ACCEPTED FOR RECORD

\*See Instructions on Reverse Side

NMOCC

FARMINGTON DISTRICT

BY SM