

UNITED STATES
DEPARTMENT OF THE INTERIOR
GEOLOGICAL SURVEY

APPLICATION FOR PERMIT TO DRILL, DEEPEN, OR PLUG BACK

1a. TYPE OF WORK

DRILL ☒DEEPEN ☐PLUG BACK ☐

b. TYPE OF WELL

OIL
WELL ☐GAS
WELL ☒

OTHER

SINGLE
ZONE ☒MULTIPLE
ZONE ☐

2. NAME OF OPERATOR

Merrion Oil & Gas Corporation

3. ADDRESS OF OPERATOR

P. O. Box 1017, Farmington, New Mexico 87499

4. LOCATION OF WELL (Report location clearly and in accordance with any State requirements.)

At surface 1750' FNL and 1010' FWL

At proposed prod. zone

Same

14. DISTANCE IN MILES AND DIRECTION FROM NEAREST TOWN OR POST OFFICE*

15 mi. South of Farmington

15. DISTANCE FROM PROPOSED* Lease 1650'

LOCATION TO NEAREST
PROPERTY OR LEASE LINE, FT. Drlg Unit 990'(Also to nearest drlg. unit line, if any)
18. DISTANCE FROM PROPOSED LOCATION*
TO NEAREST WELL, DRILLING, COMPLETED,
OR APPLIED FOR, ON THIS LEASE, FT. 2840'

16. NO. OF ACRES IN LEASE

2400

19. PROPOSED DEPTH

1300

17. NO. OF ACRES ASSIGNED

TO THIS WELL 160-15438

20. ROTARY OR CABLE TOOLS

Rotary

21. ELEVATIONS (Show whether DF, RT, GR, etc.)

5955 GL

22. APPROX. DATE WORK WILL START*

As soon as possible

23. PROPOSED CASING AND CEMENTING PROGRAM

SIZE OF HOLE	SIZE OF CASING	WEIGHT PER FOOT	SETTING DEPTH	QUANTITY OF CEMENT
9-3/4"	7"	23 #/ft	40'	10 sx Class B 2% CACL ₂
6-1/4"	4-1/2"	10.5 #/ft	800'	75 sx Class B
3-7/8"	2-7/8"	If necessary		

DRILLING OPERATIONS AUTHORIZED ARE
Cased, Cemented, and SealedThis action is subject to administrative
appeal pursuant to 30 CFR 290.

Will drill 9-3/4" hole to 40' and set 7" 23 #/ft conductor @ 40' cemented with 10 sx Class B 2% CACL₂ to surface. Will drill 6-1/4" hole to 800' and set 4-1/2" 10.5 #/ft surface casing @ 800' with 75 sx Class B circulated to surface. Will air drill 3-7/8" open hole to TD. Will test Fruitland - Pictured Cliffs. If necessary, will set 2-7/8" uncemented liner from 800' to TD. Blow out preventers will be 6" 600 Series bag type preventer.

ESTIMATED TOPS

Ojo Alamo
FarmingtonSurface
450Fruitland
Pictured Cliffs

The gas from this formation is dedicated to Northwest Pipeline.

IN ABOVE SPACE DESCRIBE PROPOSED PROGRAM: If proposal is to deepen or plug back, give data on present productive zone and proposed new productive zone. If proposal is to drill or deepen directionally, give pertinent data on subsurface locations and measured and true vertical depths. Give blowout preventer program, if any.

24. SIGNED [Signature] TITLE Operations Manager

DATE 1/21/83

(This space for Federal or State office use)

PERMIT NO. _____

APPROVAL DATE _____

APPROVED BY _____

TITLE _____

CONDITIONS OF APPROVAL, IF ANY:

APPROVED
AS AMENDED

DATE FEB 3 1983

JAMES F. SIMS
DISTRICT ENGINEER

All distances must be from the outer boundaries of the Section.

30-043-2552

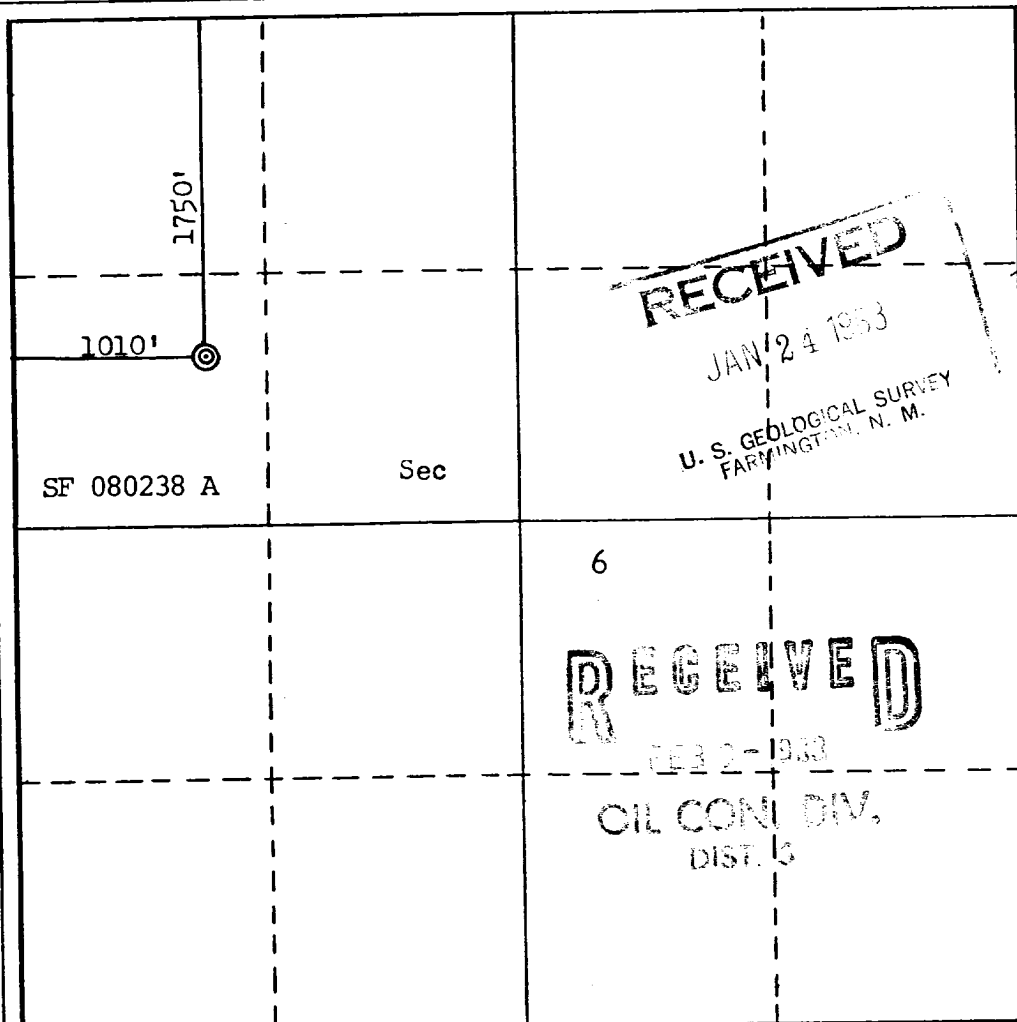
Operator Merrion Oil & Gas Corporation			Lease Chaco 12A		Well No. 9R
Unit Letter E	Section 6	Township 25N	Range 12W	County San Juan	
Actual Footage Location of Well: 1750 feet from the North line and 1010 feet from the West line					
Ground Level Elev. 5955	Producing Formation Pictured Cliffs	Pool WAW Fruitland/Pictured Cliffs	Dedicated Acreage: 160-154.38 Acres		

1. Outline the acreage dedicated to the subject well by colored pencil or hachure marks on the plat below.
2. If more than one lease is dedicated to the well, outline each and identify the ownership thereof (both as to working interest and royalty).
3. If more than one lease of different ownership is dedicated to the well, have the interests of all owners been consolidated by communitization, unitization, force-pooling, etc?

☐ Yes ☐ No If answer is "yes," type of consolidation _____

If answer is "no," list the owners and tract descriptions which have actually been consolidated. (Use reverse side of this form if necessary.) _____

No allowable will be assigned to the well until all interests have been consolidated (by communitization, unitization, forced-pooling, or otherwise) or until a non-standard unit, eliminating such interests, has been approved by the Commission.



CERTIFICATION

I hereby certify that the information contained herein is true and complete to the best of my knowledge and belief.

Name
Steve S. Dunn
Position
Operations Manager
Company
Merrion Oil & Gas Corporation
Date
1/21/83

I hereby certify that the well location shown on this plat was plotted from field notes of actual surveys made by me or under my supervision, and that the same is true and correct to the best of my knowledge and belief.

Date Surveyed

April 7, 1982
Registered Professional Engineer
and/or Land Surveyor

Fred B. Kerr Jr.
Certificate No.

3950 & KERR, JR.

