

UNITED STATES  
DEPARTMENT OF THE INTERIOR  
GEOLOGICAL SURVEY

## APPLICATION FOR PERMIT TO DRILL, DEEPEN, OR PLUG BACK

1a. TYPE OF WORK

DRILL ☒DEEPEN ☐PLUG BACK ☐

b. TYPE OF WELL

OIL  
WELL ☐GAS  
WELL ☒

OTHER

RECEIVED

SINGLE  
ZONE ☒MULTIPLE  
ZONE ☐

2. NAME OF OPERATOR

AAA Operating Company, Inc. R.C. Wyman

3. ADDRESS OF OPERATOR

Suite 3545

BUREAU OF LAND MANAGEMENT  
DALLAS, TEXAS 75270

First International Bldg.

4. LOCATION OF WELL (Report location clearly and in accordance with any State requirements.)\*

At surface

At proposed prod. zone 1030' South line 920' from East line

14. DISTANCE IN MILES AND DIRECTION FROM NEAREST TOWN OR POST OFFICE\*

15 Miles South

15. DISTANCE FROM PROPOSED\*

LOCATION TO NEAREST  
PROPERTY OR LEASE LINE, FT.  
(Also to nearest drlg. unit line, if any)

16. NO. OF ACRES IN LEASE

17. NO. OF ACRES ASSIGNED  
TO THIS WELL

160

18. DISTANCE FROM PROPOSED LOCATION\*  
TO NEAREST WELL, DRILLING, COMPLETED,  
OR APPLIED FOR, ON THIS LEASE, FT.

19. PROPOSED DEPTH

3315'

20. ROTARY OR CABLE TOOLS

Rotary

21. ELEVATIONS (Show whether DF, RT, GR, etc.)

DRILLING OPERATIONS AUTHORIZED ARE  
SUBJECT TO COMPLIANCE WITH ATTACHEDThis action is subject to administrative  
appeal pursuant to 30 CFR 290.

23. "GENERAL REQUIREMENTS"

PROPOSED CASING AND CEMENTING PROGRAM

SIZE OF HOLE	SIZE OF CASING	WEIGHT PER FOOT	SETTING DEPTH	QUANTITY OF CEMENT
9 7/8	8 5/8	23#	180'	100 sx.
7 7/8	4 1/2	9.3#	3315'	640 sx.

Selectively perforate &amp; sand-water frac the Chacra Formation.

A 3000 psi WP & 6000 psi test double gate preventer equipped with blind & pipe  
rams will be used for blow out prevention on this well.

This gas is dedicated.

SE/Section 15 is dedicated to this well.

IN ABOVE SPACE DESCRIBE PROPOSED PROGRAM: If proposal is to deepen or plug back, give data on present productive zone and proposed new productive  
zone. If proposal is to drill or deepen directionally, give pertinent data on subsurface locations and measured and true vertical depths. Give blowout  
preventer program, if any.

24.

SIGNED

TITLE

President

(This space for Federal or State office use)

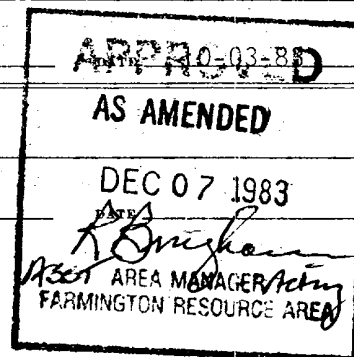
PERMIT NO.

APPROVAL DATE

APPROVED BY

TITLE

CONDITIONS OF APPROVAL, IF ANY:

\*See Instructions On Reverse Side  
NMOCC

All distances must be from the outer boundaries of the Section.

Operator <b>AAA OPERATING COMPANY, INC. R.C. Wynn</b>			Lease <b>FEDERAL "R"</b>		Well No. <b>2</b>
Unit Letter <b>P</b>	Section <b>15</b>	Township <b>27N</b>	Range <b>8W</b>	County <b>San Juan</b>	
Actual Footage Location of Well: <b>1030</b> feet from the <b>South</b> line and <b>920</b> feet from the <b>East</b> line					
Ground Level Elev. <b>5912</b>	Producing Formation <b>Chacra</b>		Pool <b>Otero</b>	Dedicated Acreage: <b>160</b> Acres	

1. Outline the acreage dedicated to the subject well by colored pencil or hatchure marks on the plat below.
2. If more than one lease is dedicated to the well, outline each and identify the ownership thereof (both as to working interest and royalty).
3. If more than one lease of different ownership is dedicated to the well, have the interests of all owners been consolidated by communitization, unitization, force-pooling, etc?

☐ Yes ☐ No If answer is "yes," type of consolidation \_\_\_\_\_

If answer is "no," list the owners and tract descriptions which have actually been consolidated. (Use reverse side of this form if necessary.) \_\_\_\_\_

No allowable will be assigned to the well until all interests have been consolidated (by communitization, unitization, forced-pooling, or otherwise) or until a non-standard unit, eliminating such interests, has been approved by the Division.

<p>RECEIVED NOV 26 1983 BUREAU OF LAND MANAGEMENT FARMINGTON RESOURCE AREA</p>		<p>Sec.</p>	
		<p>15</p>	
<p>RECEIVED DEC - 9 1983 OIL CON. DIV. DIST. 3</p>		<p>920'</p> <p>1030'</p>	

CERTIFICATION

I hereby certify that the information contained herein is true and complete to the best of my knowledge and belief.

Name  
**R. C. WYNN**

Position  
**PRESIDENT**

Company  
**AAA OPERATING CO., INC.**

Date  
**10-03-83**

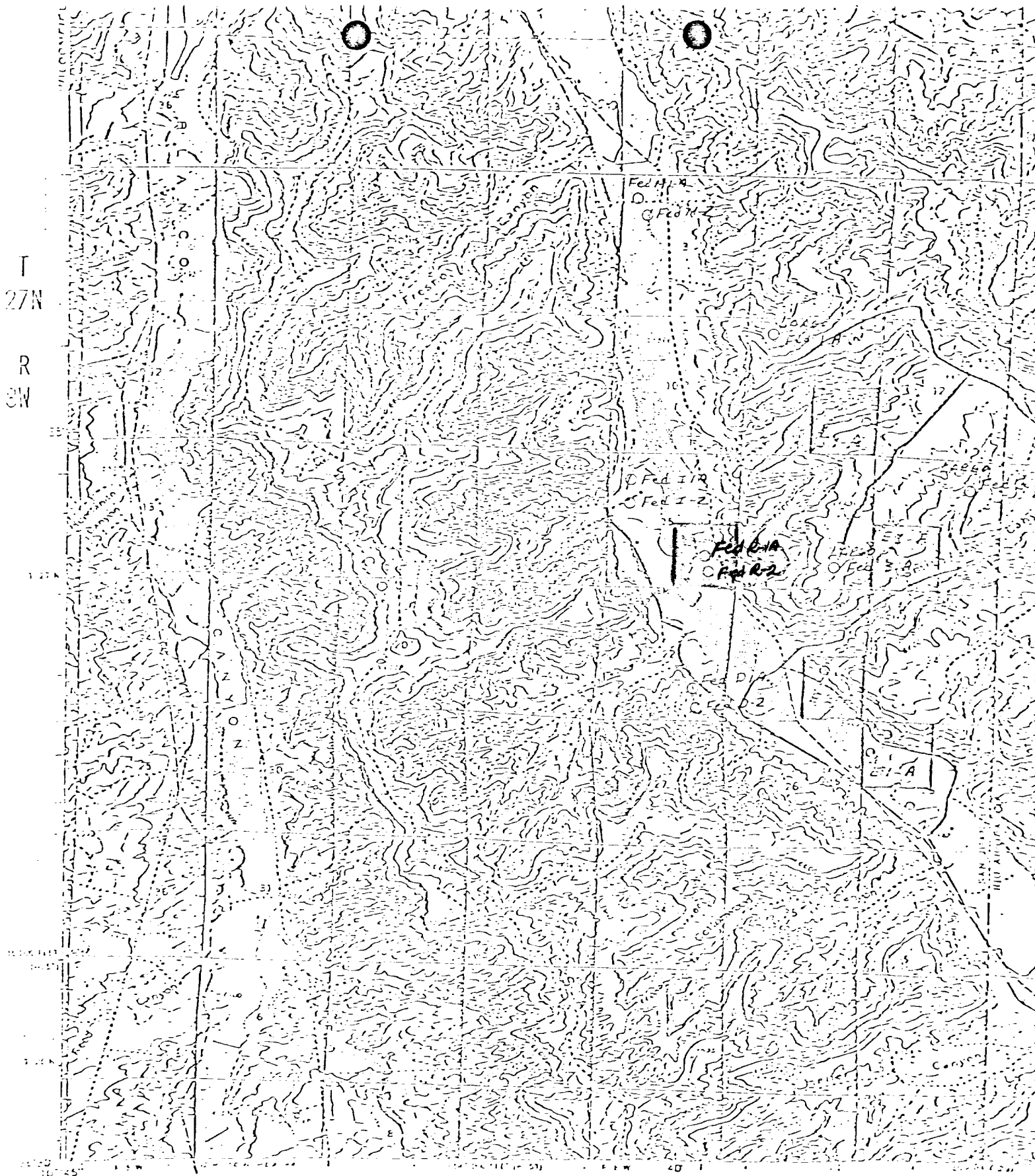
I hereby certify that the well location shown on this plat was plotted from field notes of actual surveys made by me or under my supervision, and that the same is true and correct to the best of my knowledge and belief.

Date Surveyed  
**June 7, 1983**

Registered Professional Engineer and/or Land Surveyor  
**Fred B. Kersh, Jr.**

Certificate No.  
**3950**

0 330 660 990 1320 1650 1980 2310 2640 2970 3300 3630 3960 4290 4620 4950 5280 5610 5940 6270 6600



R. C. WYNN  
 Suite 3545  
 First International Building  
 Dallas, Texas 75270

EXISTING ROADS  
 O PROPOSED LOCATIONS