

UNITED STATES
DEPARTMENT OF THE INTERIOR
GEOLOGICAL SURVEY

APPLICATION FOR PERMIT TO DRILL, DEEPEN, OR PLUG BACK

1a. TYPE OF WORK
DRILL ☐ DEEPEN ☐ PLUG BACK ☐

b. TYPE OF WELL
OIL WELL ☐ GAS WELL ☒ OTHER ☐ SINGLE ZONE ☒ MULTIPLE ZONE ☐

2. NAME OF OPERATOR
Simmons Engineering & Consulting Company

3. ADDRESS OF OPERATOR
5704 Villa View Dr., Farmington, N.M. 87401

4. LOCATION OF WELL (Report location clearly and in accordance with any State requirements.)
At surface 790' FNL & 875' FNL

At proposed prod. zone Same

14. DISTANCE IN MILES AND DIRECTION FROM NEAREST TOWN OR POST OFFICE

15 miles

15. DISTANCE FROM PROPOSED*
LOCATION TO NEAREST
PROPERTY OR LEASE LINE, FT.
(Also to nearest drlg. unit line, if any)

790

18. DISTANCE FROM PROPOSED LOCATION*
TO NEAREST WELL, DRILLING, COMPLETED,
OR APPLIED FOR, ON THIS LEASE, FT.

2640

21. ELEVATIONS (Show whether DF, RT, GR, etc.)

6035 GR

DRILLING OPERATIONS AUTHORIZED ARE
SUBJECT TO COMPLIANCE WITH ATTACHED

"GENERAL REQUIREMENTS"

PROPOSED CASING AND CEMENTING PROGRAM

| SIZE OF HOLE | SIZE OF CASING | WEIGHT PER FOOT | SETTING DEPTH | 100 sks | 118 cu. ft. |
|--------------|----------------|-----------------|---------------|---------|-------------|
| 12-1/4 | 8-5/8 | 24 | 100 | 200 sks | 236 cu. ft. |
| 5-1/4 | 2-7/8 | 6.4 | 1310 | | |

Operator plans to drill to depth of 1310 feet and run electric logs to evaluate Fruitland Formation. If productive, new 2 1/2" casing will be run and cemented back to surface in one stage. The Fruitland will be perforated and stimulated as required. If non-productive, the well will plugged and abandoned as per BIA-BLM specifications.

Urgent! Lease deadline. Must be producing by August 24, 1984

IN ABOVE SPACE DESCRIBE PROPOSED PROGRAM: If proposal is to deepen or plug back, give data on present productive zone and proposed new productive zone. If proposal is to drill or deepen directionally, give pertinent data on subsurface locations and measured and true vertical depths. Give blowout preventer program, if any.

24.

SIGNED R. D. Simmons

TITLE Operator

April 20, 1984

(This space for Federal or State office use)

PERMIT NO.

APPROVAL DATE

APPROVED BY

CONDITIONS OF APPROVAL, IF ANY:

RECEIVED
MAY 21 1984

OIL CON. DIV.
DIST. 3
NMOCC
See Instructions On Reverse Side

| |
|--|
| APPROVED |
| AS AMENDED |
| DATE MAY 17 1984 |
| <i>John M. Udeke</i> AREA MANAGER FARMINGTON RESOURCE AREA |

All distances must be given in whole numbers of the Section.

| | | | | | |
|--|--|-------------------------|--|---------------------------|--|
| Operator SIMMONS ENGINEERING CONSULTING | | | | Well No. 1 | |
| Unit Letter D | Section 18 | Township 26N | Range 11W | County San Juan | |
| Actual Footage Location of Well: 790 feet from the North line and 875 feet from the West line | | | | | |
| Ground Level Elev. 6035 | Producing Formation Fruitland - P.C. | Pool Gallegos | Dedicated Acreage: 160/58.91 Acres | | |

1. Outline the acreage dedicated to the subject well by colored pencil or hatchure marks on the plat below.
2. If more than one lease is dedicated to the well, outline each and identify the ownership thereof (both as to working interest and royalty).
3. If more than one lease of different ownership is dedicated to the well, have the interests of all owners been consolidated by communitization, unitization, force-pooling, etc?

☐ Yes ☐ No If answer is "yes," type of consolidation _____

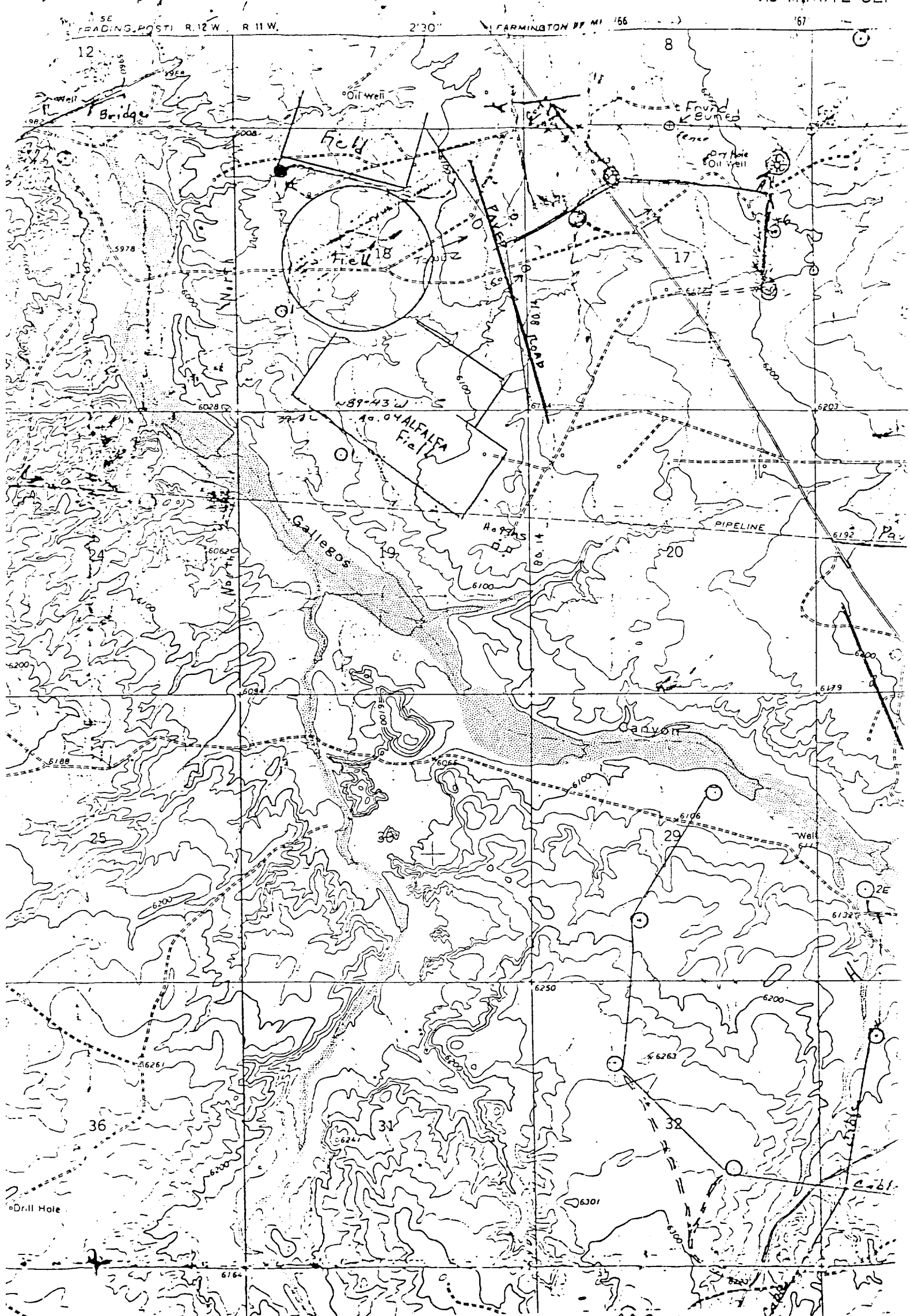
If answer is "no," list the owners and tract descriptions which have actually been consolidated. (Use reverse side of this form if necessary.) _____

No allowable will be assigned to the well until all interests have been consolidated (by communitization, unitization, forced-pooling, or otherwise) or until a non-standard unit, eliminating such interests, has been approved by the Commission.

| | | | |
|---|--|--|--|
| | | <p>18</p> <p>RECEIVED</p> <p>APR 27 1984</p> <p>BUREAU OF LAND MANAGEMENT FARMINGTON RESOURCE AREA</p> | |
| <p>RECEIVED</p> <p>MAY 21 1984</p> <p>CON. DIV. DIST. 3</p> | | | |

Scale: 1"=1000'

| | |
|--|---------------------------|
| <p>CERTIFICATION</p> <p>I hereby certify that the information contained herein is true and complete to the best of my knowledge and belief.</p> <p><i>R. D. Simmons</i></p> | |
| Name | R. D. Simmons |
| Position | Operator |
| Company | Simmons Eng & Conslt. Co. |
| Date | 4-24-84 |
| <p>I hereby certify that the well location shown on this plat was plotted from field notes of actual surveys made by me or under my supervision, and that the same is true and correct to the best of my knowledge and belief.</p> | |
| Date Surveyed | April 18, 1984 |
| Registered Professional Engineer and Land Surveyor | <i>Fred B. Kerr Jr.</i> |
| Certificate No. | 3950 |



Vicinity Map for
SIMMONS ENGINEERING & CONSULTING #1 RICKY
790 FNL 875 FWL Sec. 18-T26N-R11W
SAN JUAN COUNTY, NEW MEXICO

Houses

5