

UNITED STATES
DEPARTMENT OF THE INTERIOR
GEOLOGICAL SURVEY

APPLICATION FOR PERMIT TO DRILL, DEEPEN, OR PLUG BACK

1a. TYPE OF WORK

DRILL ☒

DEEPEN ☐

PLUG BACK ☐

b. TYPE OF WELL

OIL
WELL ☐

GAS
WELL ☒

OTHER

SINGLE
ZONE ☒

MULTIPLE
ZONE ☐

2. NAME OF OPERATOR

Simmons Engineering & Consulting Company

3. ADDRESS OF OPERATOR

5704 Villa View Dr., Farmington, N.M. 87401

4. LOCATION OF WELL (Report location clearly and in accordance with any State requirements.)

At surface

1850' FSL & 790' FWL

At proposed prod. zone

Same

APR 27 1984

14. DISTANCE IN MILES AND DIRECTION FROM NEAREST TOWN OR POST OFFICE

15 miles

15. DISTANCE FROM PROPOSED*
LOCATION TO NEAREST
PROPERTY OR LEASE LINE, FT.
(Also to nearest drlg. unit line, if any)

790

16. NO. OF ACRES IN LEASE

160

18. DISTANCE FROM PROPOSED LOCATION*
TO NEAREST WELL, DRILLING, COMPLETED,
OR APPLIED FOR, ON THIS LEASE, FT.

2640

19. PROPOSED DEPTH

1310

17. NO. OF ACRES ASSIGNED
TO THIS WELL

160 (59.05)

20. ROTARY OR CABLE TOOLS

Rotary 0-TD

21. ELEVATIONS (Show whether DF, RT, GR, etc.)

6041 GR

DRILLING OPERATIONS AUTHORIZED ARE
SUBJECT TO COMPLIANCE WITH ATTACHED

22. APPROX. DATE WORK WILL START*

June 3, 1984

23.

PROPOSED PROGRAM

This action is subject to administrative
appeal pursuant to 30 CFR 290.

SIZE OF HOLE	SIZE OF CASING	WEIGHT PER FOOT	SETTING DEPTH	QUANTITY OF CEMENT
12-1/4	8-5/8	24	100	100 sks 118 cu. ft.
5-1/4	2-7/8	6.4	1310	200 sks 236 cu. ft.

Operator plans to drill to depth of 1310 feet and run electric logs to evaluate Fruitland Formation. If productive, new 2-7/8 casing will be run and cemented back to surface in one stage. The Fruitland will be perforated and stimulated as required. If non-productive, the well will be plugged and abandoned as per BIA-BLM specifications.

Urgent! Lease deadline. Must be producing August 24, 1984

IN ABOVE SPACE DESCRIBE PROPOSED PROGRAM: If proposal is to deepen or plug back, give data on present productive zone and proposed new productive zone. If proposal is to drill or deepen directionally, give pertinent data on subsurface locations and measured and true vertical depths. Give blowout preventer program, if any.

24.

SIGNED R. D. Simmons

TITLE Operator

(This space for Federal or State office use)

PERMIT NO.

APPROVAL DATE

APPROVED BY

CONDITIONS OF APPROVAL, IF ANY:

OIL CON. DIV.

DIST. 3

*See Instructions On Reverse Side
NMOCC

DATE April 20, 1984

APPROVED
AS AMENDED

MAY 17 1984

John Luckee
AREA MANAGER
FARMINGTON RESOURCE AREA

All distances must be from the outer boundaries of the Section.

Operator SIMMONS ENGINEERING & CONSULTING			Lease MELISSA		Well No. 1
Unit Letter L	Section 18	Township 26N	Range 11W	County San Juan	
Actual Footage Location of Well: 1850 feet from the South line and 790 feet from the West line					
Ground Level Elev. 6041	Producing Formation Fruitland P.C.		Pool Gallegos	Dedicated Acreage: 160.159.05 Acres	

1. Outline the acreage dedicated to the subject well by colored pencil or hachure marks on the plat below.
2. If more than one lease is dedicated to the well, outline each and identify the ownership thereof (both as to working interest and royalty).
3. If more than one lease of different ownership is dedicated to the well, have the interests of all owners been consolidated by communitization, unitization, force-pooling, etc?

☐ Yes ☐ No If answer is "yes," type of consolidation _____

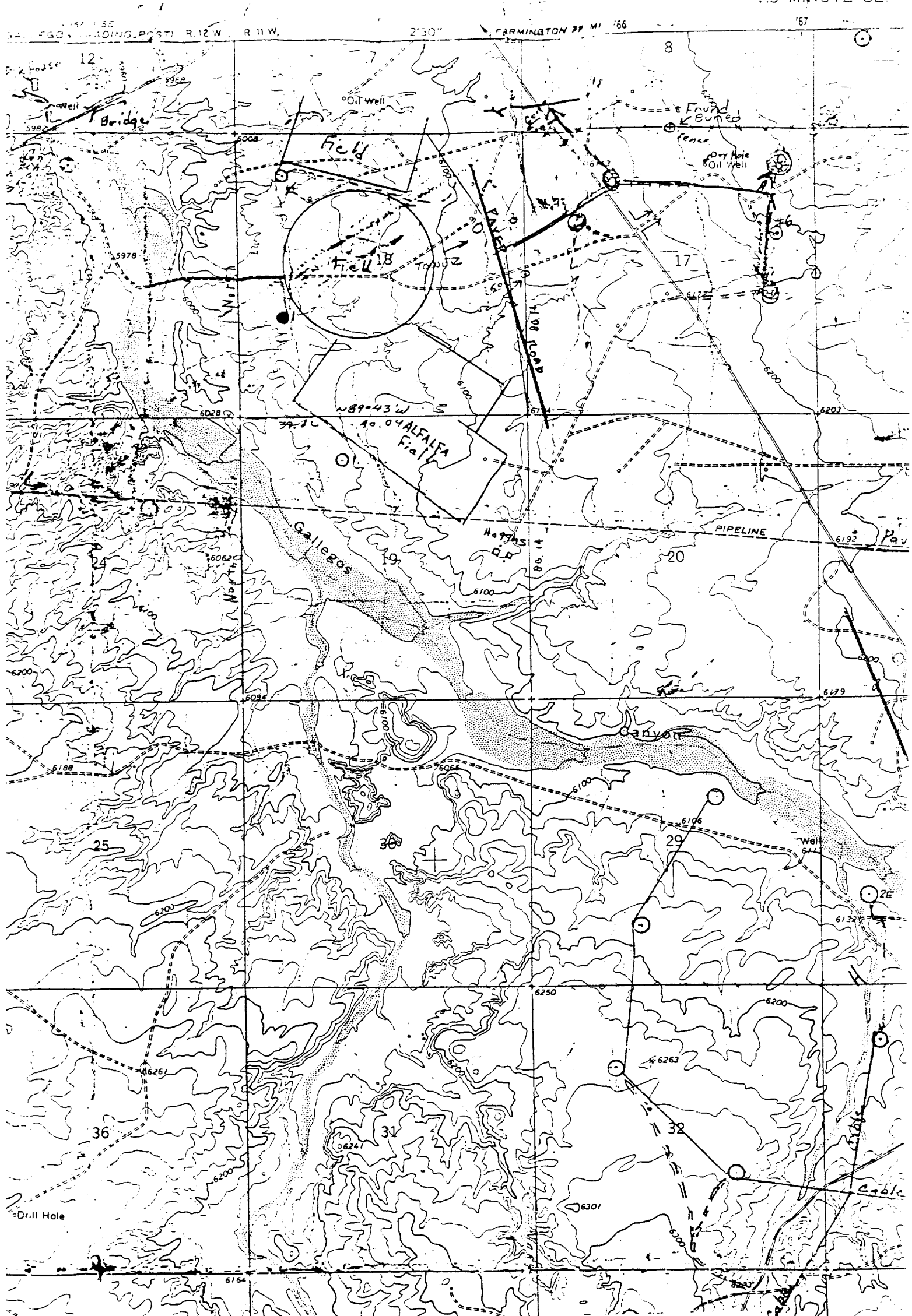
If answer is "no," list the owners and tract descriptions which have actually been consolidated. (Use reverse side of this form if necessary.) _____

No allowable will be assigned to the well until all interests have been consolidated (by communitization, unitization, forced-pooling, or otherwise) or until a non-standard unit, eliminating such interests, has been approved by the Commission.

		<p>RECEIVED</p> <p>APR 27 1984</p> <p>BUREAU OF LAND MANAGEMENT FARMINGTON RESOURCE AREA</p>	
		<p>18</p>	

Scale: 1"=1000'

<p>CERTIFICATION</p> <p>I hereby certify that the information contained herein is true and complete to the best of my knowledge and belief.</p> <p><i>R. D. Simmons</i></p>	
Name	R. D. Simmons
Position	Operator
Company	Simmons Eng. & Conslt. Co.
Date	4-24-84
<p>I hereby certify that the well location shown on this plat was plotted from field notes of actual surveys made by me or under my supervision, and that the same is true and correct to the best of my knowledge and belief.</p>	
Date Surveyed	April 18, 1984
Registered Professional Engineer and Land Surveyor	<i>Fred B. Kerry Jr.</i>
Certificate No.	3950



Vicinity Map for
SIMMONS ENGINEERING & CONSULTING #1 MELISSA
1850'FSL 790'FWL Sec. 18-T26N-R11W
SAN JUAN COUNTY, NEW MEXICO

MAP 1

Houses

5