

UNITED STATES
DEPARTMENT OF THE INTERIOR
BUREAU OF LAND MANAGEMENT

APPLICATION FOR PERMIT TO DRILL, DEEPEN, OR PLUG BACK

1a. TYPE OF WORK

DRILL ☒

DEEPEN ☐

PLUG BACK ☐

b. TYPE OF WELL

OIL
WELL ☐

GAS
WELL ☒

OTHER

SINGLE
ZONE ☒

MULTIPLE
ZONE ☐

2. NAME OF OPERATOR

El Paso Natural Gas Company

3. ADDRESS OF OPERATOR

PO Box 4289, Farmington, NM 87499

4. LOCATION OF WELL (Report location clearly and in accordance with any State requirements.)*

At surface

1150'N, 1460'W FEL

At proposed prod. zone

14. DISTANCE IN MILES AND DIRECTION FROM NEAREST TOWN OR POST OFFICE*

4 miles Northeast of Huerfano, NM

15. DISTANCE FROM PROPOSED*

LOCATION TO NEAREST

PROPERTY OR LEASE LINE, FT.

(Also to nearest drlg. unit line, if any) 1150'

18. DISTANCE FROM PROPOSED LOCATION*

TO NEAREST WELL, DRILLING, COMPLETED,

OR APPLIED FOR, ON THIS LEASE, FT. 500'

21. ELEVATIONS (Show whether DF, RT, GR, etc.)

6364'GL

23.

PROPOSED CASING AND CEMENTING PROGRAM

SIZE OF HOLE	SIZE OF CASING	WEIGHT PER FOOT	SETTING DEPTH	QUANTITY OF CEMENT
12 1/4"	8 5/8"	24.0#	200'	165 cu.ft.circulated
7 7/8"	4 1/2"	10.5#&11.6#	6585'	1390 cu.ft.circulated

1st stage - 361 cu.ft. to cover Gallup

2nd stage - 559 cu.ft. to cover Mesa Verde

3rd stage - 470 cu.ft. to cover Ojo Alamo

Selectively perforate and sand water fracture the Dakota formation.

A 3000 psi WP and 6000 psi test double gate preventer equipped with blind and pipe rams will be used for blow out prevention on this well.

This gas is dedicated.

The N/2 of Section 21 is dedicated to this well.

IN ABOVE SPACE DESCRIBE PROPOSED PROGRAM: If proposal is to deepen or plug back, give data on present productive zone and proposed new productive zone. If proposal is to drill or deepen directionally, give pertinent data on subsurface locations and measured and true vertical depths. Give blowout preventer program, if any.

24.

SIGNED

[Signature]

TITLE

Drilling Clerk

(This space for Federal or State office use)

PERMIT NO.

APPROVAL DATE

APPROVED BY

TITLE

CONDITIONS OF APPROVAL, IF ANY:

[Signature]

NMOCC

*See Instructions On Reverse Side

5. LEASE DESIGNATION AND SERIAL NO.

SF 078060

6. IF INDIAN, ALLOTTEE OR TRIBE NAME

7. UNIT AGREEMENT NAME

Huerfano Unit

8. FARM OR LEASE NAME

Huerfano Unit

9. WELL NO.

191E

10. FIELD AND POOL, OR WILDCAT

Basin Dakota

11. SEC., T., R., M., OR BLEK.
AND SURVEY OR AREA

B Sec.21, T-26-N, R-9-W
NMMP

12. COUNTY OR PARISH 13. STATE

San Juan NM

16. NO. OF ACRES IN LEASE

Unit

19. PROPOSED DEPTH

6585'

20. ROTARY OR CABLE TOOLS

Rotary

22. APPROX. DATE WORK WILL START*

This action is subject to administrative
appeal pursuant to 30 CFR 290.

QUANTITY OF CEMENT

165 cu.ft.circulated

1390 cu.ft.circulated

1st stage - 361 cu.ft. to cover Gallup

2nd stage - 559 cu.ft. to cover Mesa Verde

3rd stage - 470 cu.ft. to cover Ojo Alamo

Selectively perforate and sand water fracture the Dakota formation.

A 3000 psi WP and 6000 psi test double gate preventer equipped with blind and pipe rams will be used for blow out prevention on this well.

This gas is dedicated.

The N/2 of Section 21 is dedicated to this well.

MAR 07 1985

OIL CON. DIV.

RECEIVED

APPROVED

AS AMENDED

MAR 04 1985

AREA MANAGER

FARMINGTON RESOURCE AREA

All distances must be from the outer boundaries of the Section.

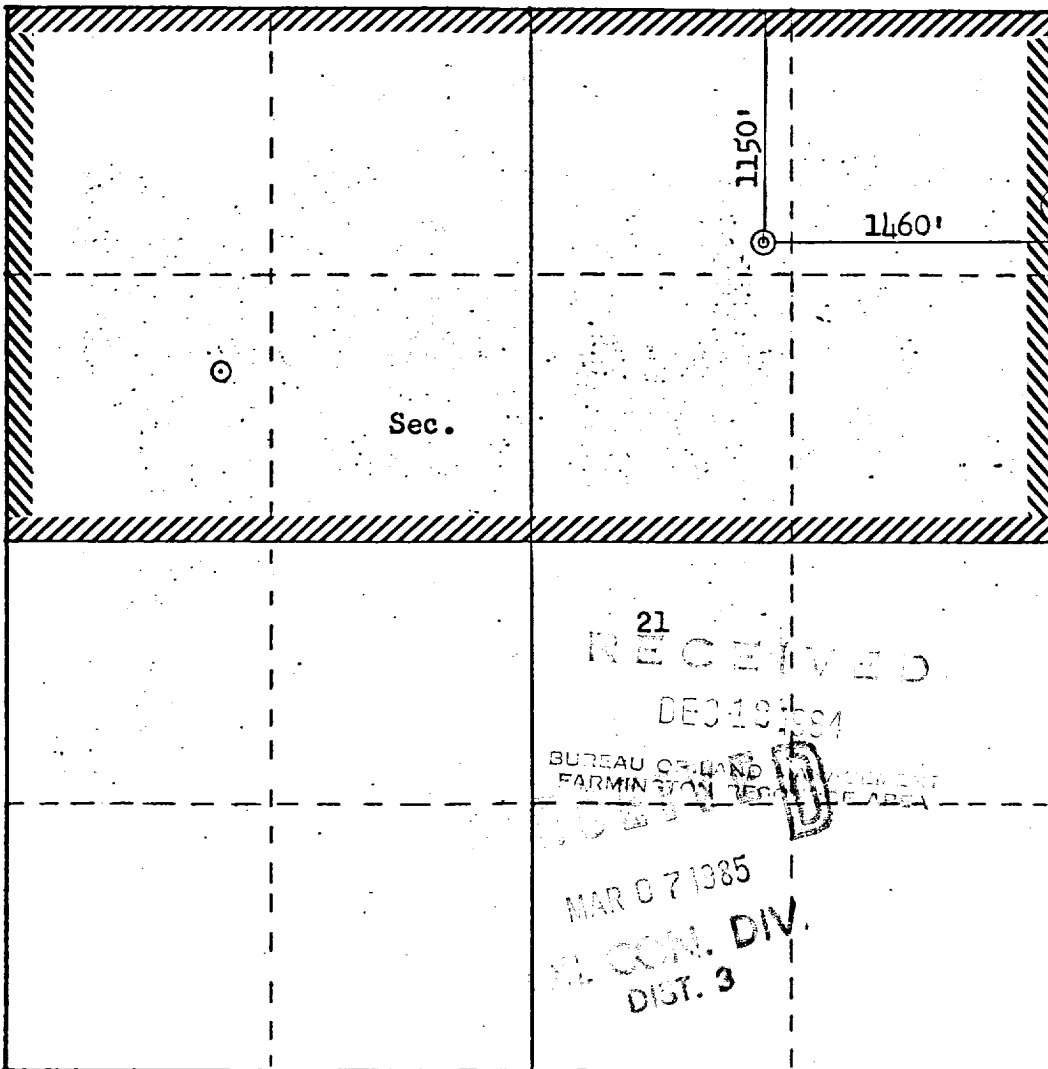
Operator EL PASO NATURAL GAS COMPANY			Lease HUERFANO UNIT (SF 078060)		Well No. 191E
Unit Letter B	Section 21	Township 26N	Range 9W	County San Juan	
Actual Footage Location of Well: 1150 feet from the North line and 1160 feet from the East line					
Ground Level Elev: 6364	Producing Formation Dakota	Pool Basin		Dedicated Acreage: N/	320 Acres

1. Outline the acreage dedicated to the subject well by colored pencil or hachure marks on the plat below.
2. If more than one lease is dedicated to the well, outline each and identify the ownership thereof (both as to working interest and royalty).
3. If more than one lease of different ownership is dedicated to the well, have the interests of all owners been consolidated by communitization, unitization, force-pooling, etc?

☒ Yes ☐ No If answer is "yes," type of consolidation Unitization

If answer is "no," list the owners and tract descriptions which have actually been consolidated. (Use reverse side of this form if necessary.)

No allowable will be assigned to the well until all interests have been consolidated (by communitization, unitization, forced-pooling, or otherwise) or until a non-standard unit, eliminating such interests, has been approved by the Commission.



CERTIFICATION

I hereby certify that the information contained herein is true and complete to the best of my knowledge and belief.

[Signature]

Name

Drilling Clerk

Position

El Paso Natural Gas Co.

Company

12-5-84

Date

I hereby certify that the well location shown on this plat was plotted from field notes of actual surveys made by me or under my supervision, and that the same is true and correct to the best of my knowledge and belief.

Date Surveyed

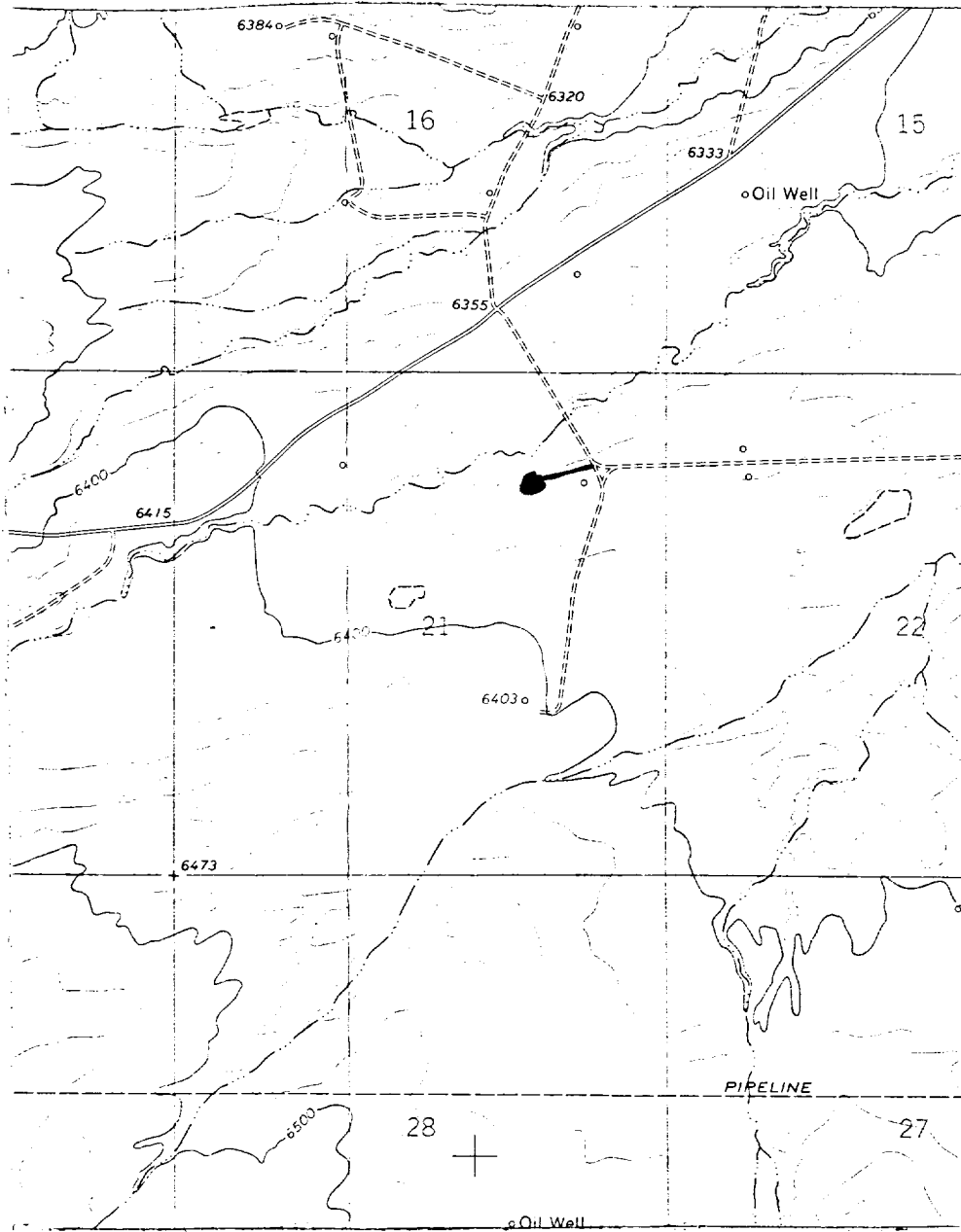
November 12, 1984

Registered Professional Engineer and Land Surveyor

[Signature]
Fred B. Kerr Jr.

Certificate No. 110

El Paso Natural Gas Company
Huefano Unit #191E (Dk)
NE 21-26-9 . -



MAP 41

LEGEND OF RIGHT-OF-WAYS

EXISTING ROADS

EXISTING PIPELINES

EXISTING ROAD & PIPELINE

PROPOSED ROADS

PROPOSED PIPELINES

PROPOSED ROAD & PIPELINE

