

UNITED STATES
DEPARTMENT OF THE INTERIOR
BUREAU OF LAND MANAGEMENT

APPLICATION FOR PERMIT TO DRILL, DEEPEN, OR PLUG BACK

1a. TYPE OF WORK

DRILL ☒

DEEPEN ☐

PLUG BACK ☐

b. TYPE OF WELL

OIL
WELL ☐

GAS
WELL ☒

OTHER

SINGLE
ZONE ☒

MULTIPLE
ZONE ☐

2. NAME OF OPERATOR

El Paso Natural Gas Company

3. ADDRESS OF OPERATOR

PO Box 4289, Farmington, NM 87499

4. LOCATION OF WELL (Report location clearly and in accordance with any State requirements.)*

At surface

1800'N, 1550'E

At proposed prod. zone

14. DISTANCE IN MILES AND DIRECTION FROM NEAREST TOWN OR POST OFFICE*

17 miles South of Bloomfield, NM

15. DISTANCE FROM PROPOSED*

LOCATION TO NEAREST
PROPERTY OR LEASE LINE, FT.

(Also to nearest drlg. unit line, if any) 1550'

18. DISTANCE FROM PROPOSED LOCATION*

TO NEAREST WELL, DRILLING, COMPLETED,
OR APPLIED FOR, ON THIS LEASE, FT. 1500'

21. ELEVATIONS (Show whether DF, RT, GR, etc.)

6605'GL

16. NO. OF ACRES IN LEASE

Unit

19. PROPOSED DEPTH

6940'

17. NO. OF ACRES ASSIGNED

TO THIS WELL

324.05 320.00

20. ROTARY OR CABLE TOOLS

Rotary

22. APPROX. DATE WORK WILL START*

This action is subject to administrative
appeal pursuant to 30 CFR 290.

PROPOSED CASING AND CEMENTING PROGRAM

| SIZE OF HOLE | SIZE OF CASING | WEIGHT PER FOOT | SETTING DEPTH | QUANTITY OF CEMENT |
|--------------|----------------|-----------------|---------------|-----------------------|
| 12 1/4" | 8 5/8" | 24.0# | 200' | 165 cu.ft.circulated |
| 7 7/8" | 4 1/2" | 10.5#&11.6# | 6940' | 1547 cu.ft.circulated |

1st stage - 380 cu.ft. to cover Gallup

2nd stage - 551 cu.ft. to cover Mesa Verde

3rd stage - 616 cu.ft. to cover Ojo Alamo

Selectively perforate and sand water fracture the Dakota formation.

A 3000 psi WP and 6000 psi test double gate preventer equipped with
blind and pipe rams will be used for blow out prevention on this well.

This gas is dedicated.

The N/2 of Section 7 is dedicated to this well.

IN ABOVE SPACE DESCRIBE PROPOSED PROGRAM: If proposal is to deepen or plug back, give data on present productive and proposed new productive zone. If proposal is to drill or deepen directionally, give pertinent data on subsurface locations and measured and true vertical depths. Give blowout preventer program, if any.

24.

SIGNED

Peggy Doak

TITLE

Drilling Clerk

(This space for Federal or State office use)

PERMIT NO.

APPROVAL DATE

APPROVED BY

TITLE

CONDITIONS OF APPROVAL, IF ANY:

h

NMOCC

*See Instructions On Reverse Side

5. LEASE DESIGNATION AND SERIAL NO.

NM 03017

6. IF INDIAN, ALLOTTEE OR TRIBE NAME

7. UNIT AGREEMENT NAME

Huerfano Unit

8. FARM OR LEASE NAME

Huerfano Unit

9. WELL NO.

92E

10. FIELD AND POOL, OR WILDCAT

Basin Dakota

11. SEC., T., R., M., OR BLK.
AND SURVEY OR AREA

Sec. 7-T-26-N, R-09-W

NMPM

12. COUNTY OR PARISH

13. STATE

San Juan

NM

17. NO. OF ACRES ASSIGNED

TO THIS WELL

324.05 320.00

20. ROTARY OR CABLE TOOLS

Rotary

22. APPROX. DATE WORK WILL START*

This action is subject to administrative
appeal pursuant to 30 CFR 290.

OIL CONSERVATION DIVISION

P. O. BOX 2088
SANTA FE, NEW MEXICO 87501

Form C-107
Revised 10-1

All distances must be from the outer boundaries of the Section.

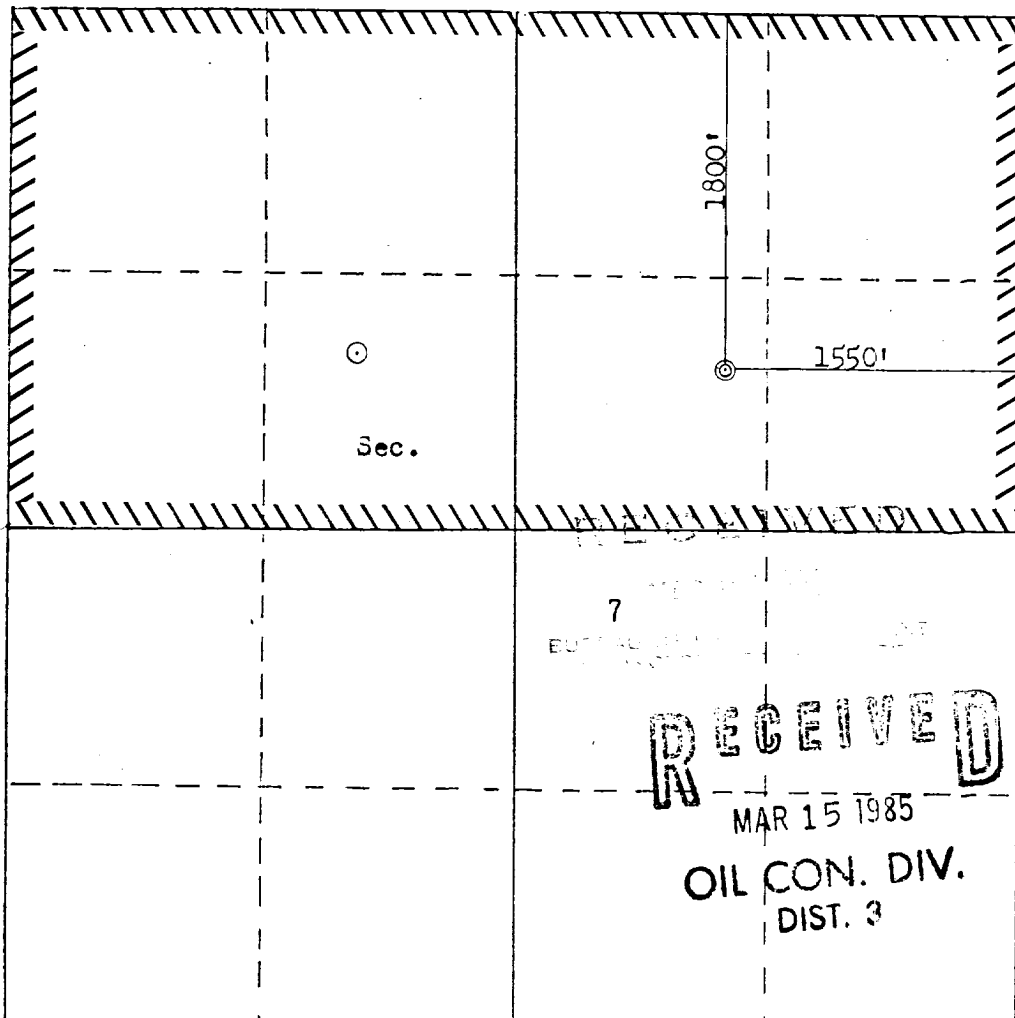
| | | | | | |
|--|--------------------------------------|------------------------|--|---------------------------|---|
| Operator EL PASO NATURAL GAS COMPANY | | | Lease HUERFANO UNIT (NM 03017) | | Well No. 92E |
| Unit Letter G | Section 7 | Township 26N | Range 9W | County San Juan | |
| Actual Footage Location of Well: 1800 feet from the North line and 1550 feet from the East line | | | | | |
| Ground Level Elev. 6605 | Producing Formation Dakota | | Pool Basin | | Dedicated Acreage: 324.05-320 Acres |

1. Outline the acreage dedicated to the subject well by colored pencil or hatchure marks on the plat below.
2. If more than one lease is dedicated to the well, outline each and identify the ownership thereof (both as to working interest and royalty).
3. If more than one lease of different ownership is dedicated to the well, have the interests of all owners been consolidated by communitization, unitization, force-pooling, etc?

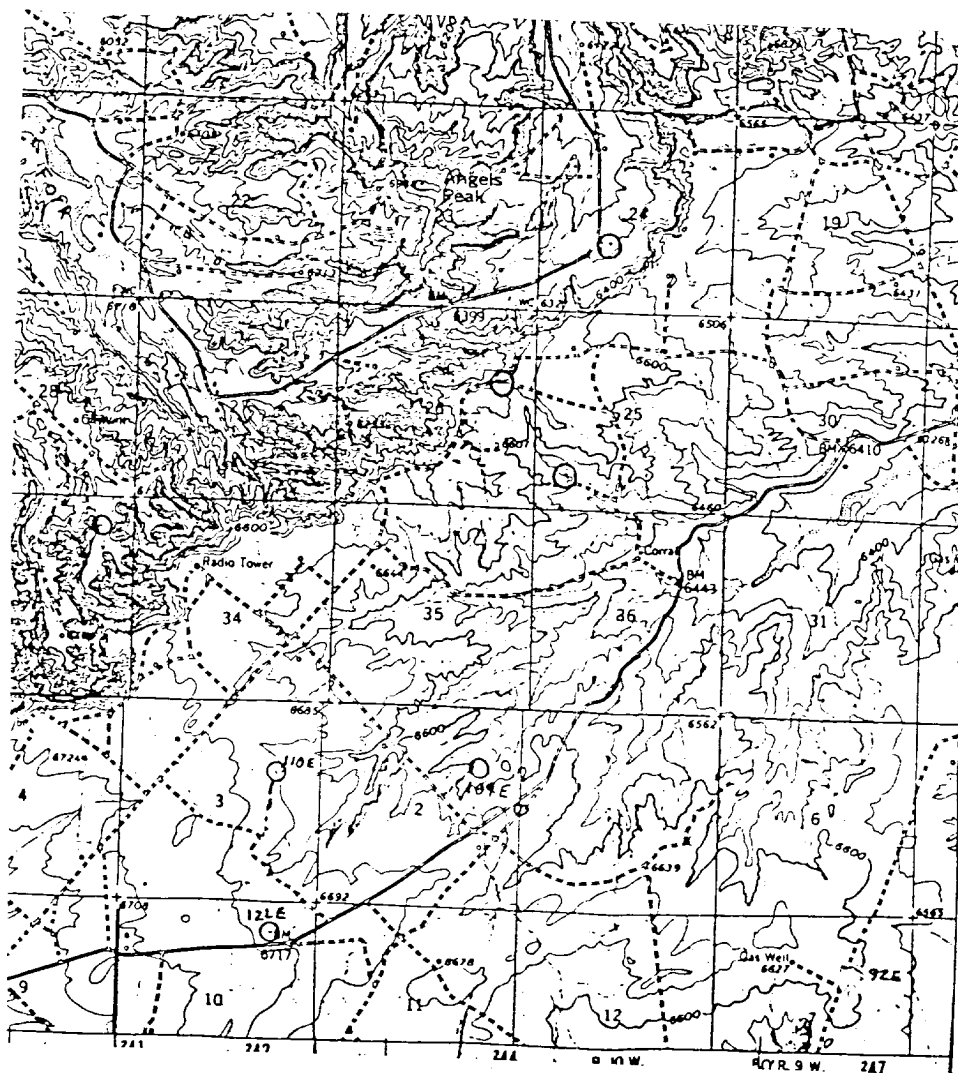
☒ Yes ☐ No If answer is "yes," type of consolidation Unitization

If answer is "no," list the owners and tract descriptions which have actually been consolidated. (Use reverse side of this form if necessary.)

No allowable will be assigned to the well until all interests have been consolidated (by communitization, unitization, forced-pooling, or otherwise) or until a non-standard unit, eliminating such interests, has been approved by the Commission.



| | |
|---|----------------------------|
| CERTIFICATION | |
| I hereby certify that the information contained herein is true and complete to the best of my knowledge and belief. | |
| <i>Joseph L. Cook</i> | |
| Name | Drilling Clerk |
| Position | El Paso Natural Gas |
| Company | March 4, 1985 |
| Date | |
| I hereby certify that the well location shown on this plat was plotted from field notes of actual surveys made by me or under my supervision, and that the same is true and correct to the best of my knowledge and belief. | |
| Date Surveyed | February 20, 1985 |
| Registered Professional Engineer and Land Surveyor | |
| <i>John A. Allen</i> | |



Vicinity Map for
 EL PASO NATURAL GAS COMPANY #92E HUERFANO UNIT
 1800'FNL 1550'FEL Sec. 7-T26N-R9W
 SAN JUAN COUNTY, NEW MEXICO

Map #1

LEGEND OF RIGHT-OF-WAYS

- EXISTING ROADS
- EXISTING PIPELINES
- EXISTING ROAD & PIPELINE
- PROPOSED ROADS
- PROPOSED PIPELINES
- PROPOSED ROAD & PIPELINE