

UNITED STATES  
DEPARTMENT OF THE INTERIOR  
GEOLOGICAL SURVEY

## APPLICATION FOR PERMIT TO DRILL, DEEPEN, OR PLUG BACK

## 1a. TYPE OF WORK

DRILL ☒DEEPEN ☐PLUG BACK ☐

## b. TYPE OF WELL

OIL  
WELL ☒GAS  
WELL ☐

OTHER

SINGLE  
ZONE ☒MULTIPLE  
ZONE ☐

## 2. NAME OF OPERATOR

Energy Reserves Group, Inc.

## 3. ADDRESS OF OPERATOR

P.O. Box 3280, Casper, WY 82602

## 4. LOCATION OF WELL (Report location clearly and in accordance with any State requirements.)\*

At surface

1060' FSL &amp; 820' FEL (SE/SE)

At proposed prod. zone  
sameBUREAU OF LAND MANAGEMENT  
FARMINGTON RESOURCE AREA

## 14. DISTANCE IN MILES AND DIRECTION FROM NEAREST TOWN OR POST OFFICE\*

Approximately 16 miles South of Bloomfield, NM.

## 15. DISTANCE FROM PROPOSED\*

LOCATION TO NEAREST  
PROPERTY OR LEASE LINE, FT.  
(Also to nearest drlg. unit line, if any)

260'

## 16. NO. OF ACRES IN LEASE

1920

18. DISTANCE FROM PROPOSED LOCATION\*  
TO NEAREST WELL, DRILLING, COMPLETED,  
OR APPLIED FOR, ON THIS LEASE, FT.

550'

## 19. PROPOSED DEPTH

5650'

17. NO. OF ACRES ASSIGNED  
TO THIS WELL

40 E 80

## 20. ROTARY OR CABLE TOOLS

Rotary

## 21. ELEVATIONS (Show whether DF, RT, GR, etc.)

6301' GR ungraded

DRILLING OPERATIONS AUTHORIZED ARE  
SUBJECT TO COMPLIANCE WITH ATTACHED

## 22. APPROX. DATE WORK WILL START\*

As soon as approved.

## 23.

GENERAL REQUIREMENTS AND CEMENTING PROGRAM

SIZE OF HOLE	SIZE OF CASING	WEIGHT PER FOOT	SETTING DEPTH	QUANTITY OF CEMENT
12 1/4"	8 5/8"	24#	300'	200 sx
7 7/8"	4 1/2"	10.5#	5650'	1600 sx

This action is subject to technical and  
procedural review pursuant to 43 CFR 3165.3  
and appeal pursuant to 43 CFR 3165.4.

RECEIVED  
JUN 04 1985  
OIL CON. DIV.  
DIST. 3

IN ABOVE SPACE DESCRIBE PROPOSED PROGRAM: If proposal is to deepen or plug back, give data on present productive zone and proposed new productive zone. If proposal is to drill or deepen directionally, give pertinent data on subsurface locations and measured and true vertical depths. Give blowout preventer program, if any.

## 24.

SIGNED

TITLE

Administrator, Field Serv. DATE 5-14-85

(This space for Federal or State office use)

PERMIT NO.

APPROVAL DATE

APPROVED BY

TITLE

CONDITIONS OF APPROVAL, IF ANY:

APPROVED  
AS AMENDED

DATE

JUN 03 1985

/s/ J. Stan McKee

M. MILLENBACH  
AREA MANAGER

S-11104 need NSE

ch 2

NMOCC

NEW MEXICO OIL CONSERVATION COMMISSION  
WELL LOCATION AND ACREAGE DEDICATION PLAT

Form C-102  
Supersedes C-128  
Effective 1-1-65

All distances must be from the outer boundaries of the Section.

Operator <b>ENERGY RESERVES GROUP</b>			Lease <b>RANDALL</b>		Well No. <b>10</b>
Unit Letter <b>P</b>	Section <b>9</b>	Township <b>26N</b>	Range <b>11W</b>	County <b>San Juan</b>	
Actual Footage Location of Well: <b>1060</b> feet from the <b>South</b> line and <b>820</b> feet from the <b>East</b> line					
Ground Level Elev: <b>6301</b>	Producing Formation <b>Gallup</b>		Pool <b>Gallegos Gallup</b>		Dedicated Acreage: <b>.80</b> Acres

1. Outline the acreage dedicated to the subject well by colored pencil or hachure marks on the plat below.
2. If more than one lease is dedicated to the well, outline each and identify the ownership thereof (both as to working interest and royalty).
3. If more than one lease of different ownership is dedicated to the well, have the interests of all owners been consolidated by communitization, unitization, force-pooling, etc?

☐ Yes ☐ No If answer is "yes," type of consolidation \_\_\_\_\_

If answer is "no," list the owners and tract descriptions which have actually been consolidated. (Use reverse side of this form if necessary.) \_\_\_\_\_

No allowable will be assigned to the well until all interests have been consolidated (by communitization, unitization, forced-pooling, or otherwise) or until a non-standard unit, eliminating such interests, has been approved by the Commission.

<p>RECEIVED MAY 30 1985 BUREAU OF LAND MANAGEMENT FARMINGTON RESOURCE AREA</p>		<p>Sec.</p>	
		<p>9</p> <p>RECEIVED JUN 4 1985 OIL CO. &amp; CO., DET. 2</p>	
<p>820'</p>		<p>1060'</p>	

Scale: 1"=1000'

CERTIFICATION

I hereby certify that the information contained herein is true and complete to the best of my knowledge and belief.

Name  
**William J. Piant**

Position  
**Administrator, Field Services**

Company  
**Energy Reserves Group, Inc.**

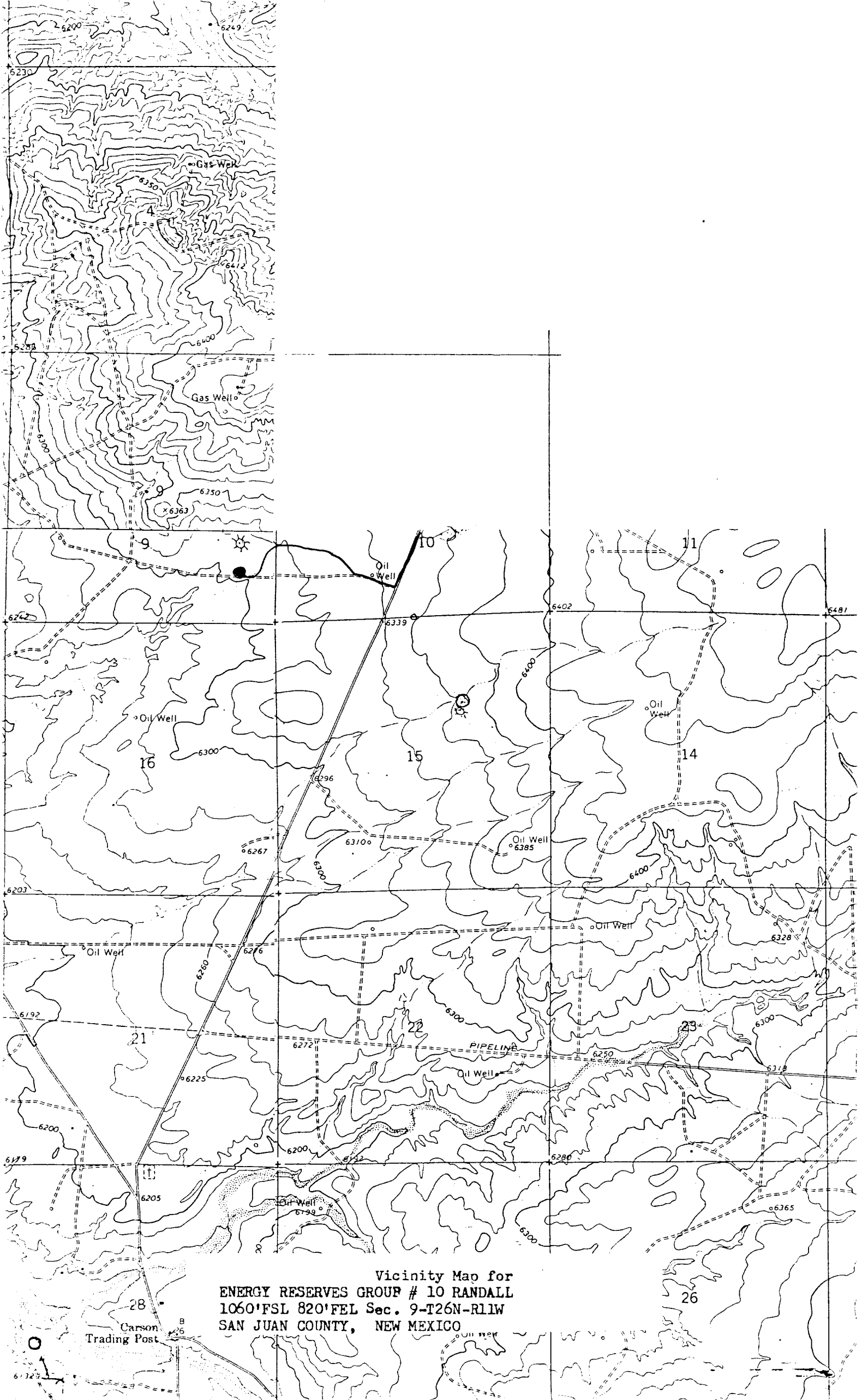
Date  
**5-3-85**

I hereby certify that the well location shown on this plat was plotted from field notes of actual surveys made by me or under my supervision, and that the same is true and correct to the best of my knowledge and belief.

Date Surveyed  
**April 24, 1985**

Registered Professional Engineer and Land Surveyor  
**Fred B. Kerr Jr.**

Certificate No.  
**3950**



Vicinity Map for  
ENERGY RESERVES GROUP # 10 RANDALL  
1060'FSL 820'FEL Sec. 9-T26N-R11W  
SAN JUAN COUNTY, NEW MEXICO