

UNITED STATES
DEPARTMENT OF THE INTERIOR
GEOLOGICAL SURVEY

APPLICATION FOR PERMIT TO DRILL, DEEPEN, OR PLUG BACK

1a. TYPE OF WORK

DRILL ☒DEEPEN ☐PLUG BACK ☐

b. TYPE OF WELL

OIL
WELL ☒GAS
WELL ☐

OTHER

SINGLE
ZONE ☒MULTIPLE
ZONE ☐

2. NAME OF OPERATOR

DUGAN PRODUCTION CORP.

3. ADDRESS OF OPERATOR

P O Box 208, Farmington, NM 87499

RECEIVED

4. LOCATION OF WELL (Report location clearly and in accordance with any State requirements.)

At surface

1850' FSL - 990' FWL

At proposed prod. zone

BUREAU OF LAND MANAGEMENT
FARMINGTON RESOURCE AREA

14. DISTANCE IN MILES AND DIRECTION FROM NEAREST TOWN OR POST OFFICE*

approximately 17 miles North of Farmington, NM

15. DISTANCE FROM PROPOSED*

LOCATION TO NEAREST
PROPERTY OR LEASE LINE, FT.
(Also to nearest drlg. unit line, if any)

990'

16. NO. OF ACRES IN LEASE

1760

17. NO. OF ACRES ASSIGNED
TO THIS WELL

40

18. DISTANCE FROM PROPOSED LOCATION*
TO NEAREST WELL, DRILLING, COMPLETED,
OR APPLIED FOR, ON THIS LEASE, FT.approx.
3000'

19. PROPOSED DEPTH

5290'

20. ROTARY OR CABLE TOOLS.

Rotary

21. ELEVATIONS (Show whether DF, RT, GR, etc.)

6195' This action is subject to technical and
procedural review pursuant to 43 CFR 3105.3
and appeal pursuant to 43 CFR 3106.4

22. APPROX. DATE WORK WILL START*

ASAP

23. PROPOSED CASING AND CEMENTING PROGRAM

DRILLING OPERATIONS AUTHORIZED ARE
SUBJECT TO COMPLIANCE WITH ATTACHED
"GENERAL REQUIREMENTS"

SIZE OF HOLE	SIZE OF CASING	WEIGHT PER FOOT	SETTING DEPTH	QUANTITY OF CEMENT
12-1/4"	8-5/8"	24#	200'	150 cf circ. to surface
7-7/8"	4-1/2"	10.5#	5290'	1330 cf circ. to surface

Plan to drill a 12-1/4" hole and set 200' of 8-5/8" OD, 24#, K-55 surface casing; then plan to drill a 7-7/8" hole to total depth with gel-water-mud program to test Gallup formation. Plan to run IES and CDL logs. If deemed productive, will run 4 1/2", 10.5#, J-55 casing, selectively perforate, frac, clean out after frac and complete well.

RECEIVED
AUG 07 1985
OIL CON. DIV.
DIST. 3

IN ABOVE SPACE DESCRIBE PROPOSED PROGRAM: If proposal is to deepen or plug back, give data on present productive zone and proposed new productive zone. If proposal is to drill or deepen directionally, give pertinent data on subsurface locations and measured and true vertical depths. Give blowout preventer program, if any.

24.

SIGNED

Sherman E. Dugan
Sherman E. Dugan

TITLE

Geologist

DATE

7-16-85

(This space for Federal or State office use)

PERMIT NO.

APPROVAL DATE

APPROVED BY

TITLE

DATE

CONDITIONS OF APPROVAL, IF ANY:

*See Instructions On Reverse Side

NM000

for J. Stan McKee

All distances must be from the outer boundaries of the Section.

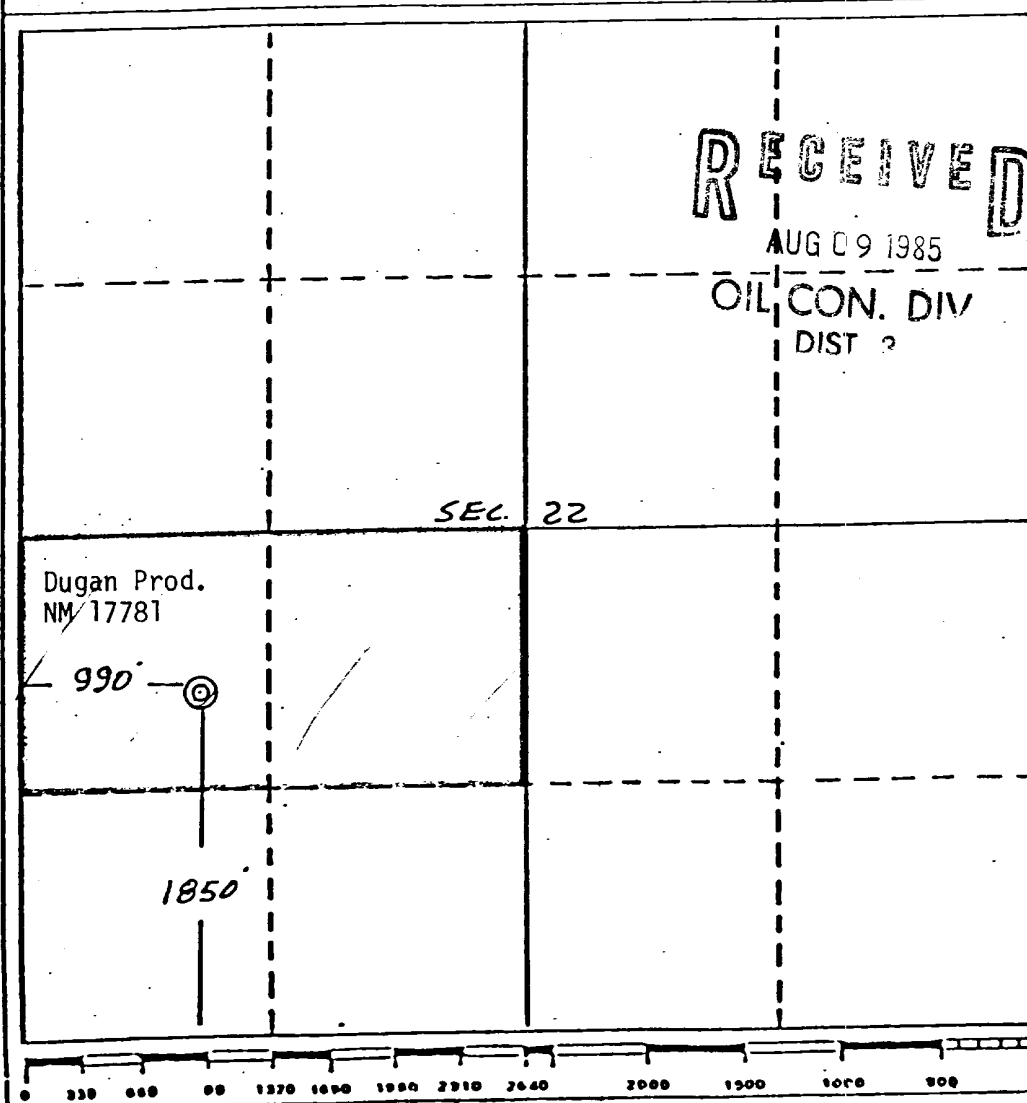
Operator Dugan Production Corporation			Lease Paul Revere		Well No. 210
Unit Letter L	Section 22	Township 26 North	Range 13 West	County San Juan	
Actual Footage Location of Wells 1850 feet from the South line and 990 feet from the West line					
Ground Level Elev. 6195	Producing Formation Gallup	Pool Bisti Lower Gallup		Dedicated Acreage 80 Acres	

1. Outline the acreage dedicated to the subject well by colored pencil or hachure marks on the plat below.
2. If more than one lease is dedicated to the well, outline each and identify the ownership thereof (both as to working interest and royalty).
3. If more than one lease of different ownership is dedicated to the well, have the interests of all owners been consolidated by communitization, unitization, force-pooling, etc?

☐ Yes ☐ No If answer is "yes," type of consolidation _____

If answer is "no," list the owners and tract descriptions which have actually been consolidated. (Use reverse side of this form if necessary.) _____

No allowable will be assigned to the well until all interests have been consolidated (by communitization, unitization, forced-pooling, or otherwise) or until a non-standard unit, eliminating such interests, has been approved by the Division.



CERTIFICATION

I hereby certify that the information contained herein is true and complete to the best of my knowledge and belief.

Sherman E. Dugan
Name
Sherman E. Dugan

Position
Geologist

Company
Dugan Production Corp.

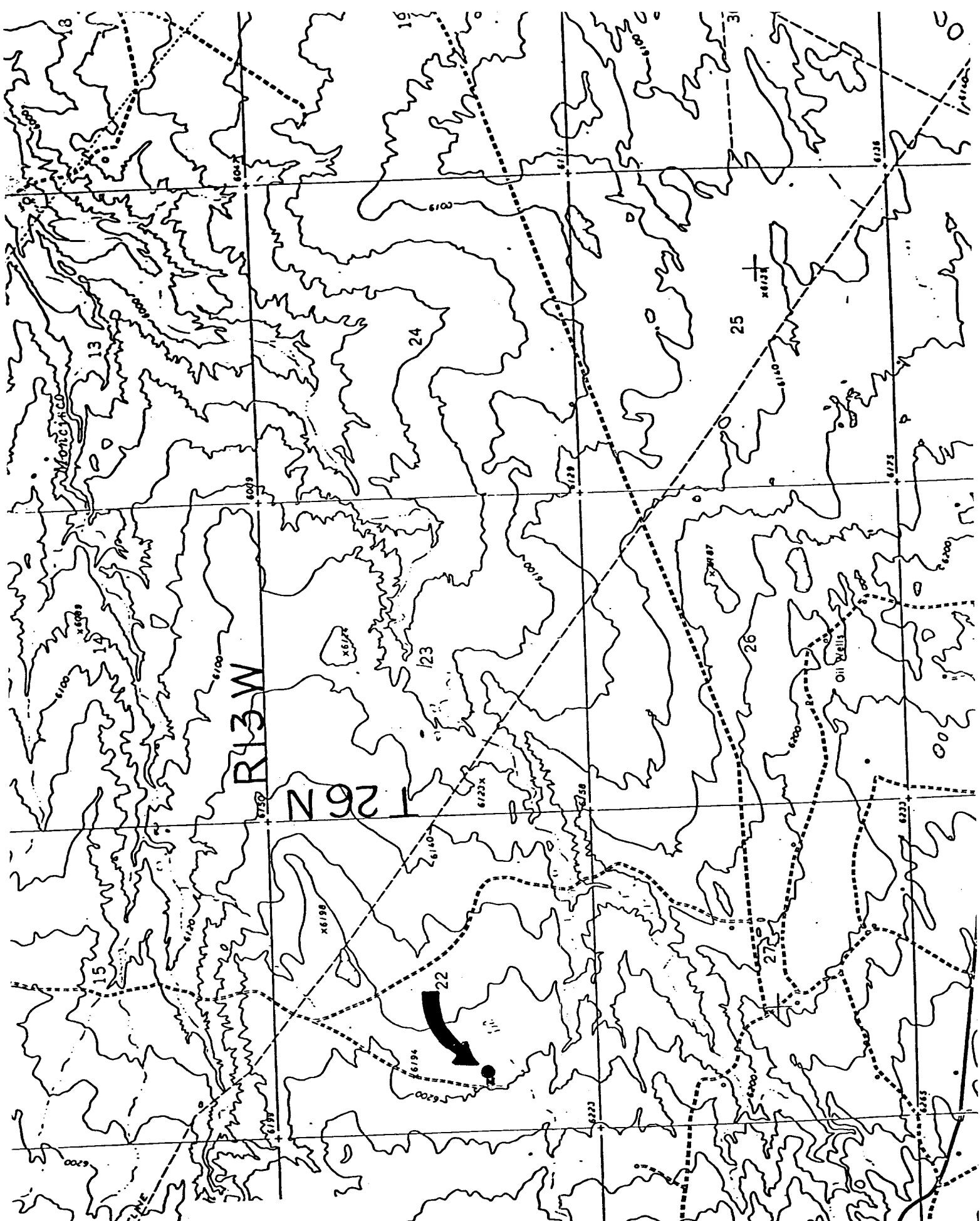
Date
8-8-85

EDGAR L. RISENHOVER
NEW MEXICO
5979
I certify that the well location shown on this plat was taken from field notes of Edgar L. Risenhoover, made by me or under my supervision, and that the same is true and correct to the best of my knowledge and belief.

Date Surveyed
July 3, 1985

Registered Professional Engineer
and/or Land Surveyor

Edgar L. Risenhoover
Certificate No. 5979
Edgar L. Risenhoover, L. S.



DUGAN PRODUCTION CORP. - Paul Revere #210
 Existing Roads ----- Exhibit E

DUGAN PRODUCTION CORP. - Paul Revere #210
 Planned Access Road(s) ----- Exhibit E

Distance from nearest town or reference pt.
 approximately 17 miles North of Farmington

Width 20' Maximum grades none
 Drainage design none required

Type of surface dirt

Cuts & Fills _____
 Surfacing material _____

Conditions good

- ☒ Turnouts
 - ☒ Culverts
 - ☒ Gates
 - ☒ Cattleguards
 - ☒ Fence cuts
- None

Other _____

Access road(s) do/do not cross Fed/and land
 NHP