

UNITED STATES
DEPARTMENT OF THE INTERIOR
BUREAU OF LAND MANAGEMENT

APPLICATION FOR PERMIT TO DRILL, DEEPEN, OR PLUG BACK

1a. TYPE OF WORK

DRILL ☒

DEEPEN ☐

PLUG BACK ☐

b. TYPE OF WELL

OIL
WELL ☒

GAS
WELL ☐

OTHER ☐

SINGLE
ZONE ☒

MULTIPLE
ZONE ☐

2. NAME OF OPERATOR

Merrion Oil & Gas Corporation

3. ADDRESS OF OPERATOR

P. O. Box 1017, Farmington, New Mexico 87499

4. LOCATION OF WELL (Report location clearly and in accordance with any State requirements.)*

At surface

1650' FSL and 990' FEL

At proposed prod. zone

Same

14. DISTANCE IN MILES AND DIRECTION FROM NEAREST TOWN OR POST OFFICE*

18 miles South of Farmington

BUREAU OF LAND MANAGEMENT
FARMINGTON RESOURCE AREA

15. DISTANCE FROM PROPOSED*

LOCATION TO NEAREST
PROPERTY OR LEASE LINE, FT.
(Also to nearest drlg. unit line, if any)

990'

16. NO. OF ACRES IN LEASE

280

17. NO. OF ACRES ASSIGNED
TO THIS WELL

80

18. DISTANCE FROM PROPOSED LOCATION*

TO NEAREST WELL, DRILLING, COMPLETED,
OR APPLIED FOR, ON THIS LEASE, FT.

1300'

19. PROPOSED DEPTH

5250

20. ROTARY OR CABLE TOOLS

0 - TD

21. ELEVATIONS (Show whether DF, RT, GR, etc.)

6049' GL

DRILLING OPERATIONS AUTHORIZED ARE
SUBJECT TO COMPLIANCE WITH ATTACHED

"GENERAL REQUIREMENTS"

PROPOSED CASING AND CEMENTING PROGRAM

22. APPROX. DATE WORK WILL START*

Spring/1985

23.

SIZE OF HOLE	SIZE OF CASING	WEIGHT PER FOOT	SETTING DEPTH	QUANTITY OF CEMENT
12-1/4"	8-5/8"	24 #/ft., J-55	200	175 sx
7-7/8"	4-1/2"	10.5 #/ft., J-55	5250	975 sx

This action is subject to administrative
appeal pursuant to 30 CFR 290.

Will drill 12-1/4" surface hole to 200 ft. and set 200 ft. of 8-5/8", 24 #/ft, J-55 grade casing with 175 sx Class B cement with 3% CaCl₂. Will drill 7-7/8" hole to 5250 ft. Will run open hole logs. No other testing planned. If well appears productive, will run 5250 ft. of 4-1/2", 10.5 #/ft. J-55 grade casing and stage cement. First stage will cement with 225 sx Class H 2% gel (1.22 cu. ft/sk. yield) 275 cu. ft. cement to cover Gallup interval from TD. Estimated top of cement is 4450 ft. Will set stage collar at 4250 ft. below Point Lookout Formation. Second stage will cement with 700 sx Class B 2% D-79 (2.06 cu. ft/sk. yield) 1442 cu. ft. cement. Followed by 100 sx Class H 2% gel (1.22 cu. ft/sk. yield) 122 cu. ft. cement to cover Mesaverde, Chacra, Pictured Cliffs, Fruitland and Ojo Alamo. Estimated top of cement is surface.

Drilling circulating medium will be low solids, non-dispersed, low water loss mud using bentonite, starch, CMC, and fresh water.

Minimum specifications for pressure control is 10", 900 series double ram blow out preventer Will perforate and stimulate as required for completion. (Estimated tops on back.)

IN ABOVE SPACE DESCRIBE PROPOSED PROGRAM: If proposal is to deepen or plug back, give data on present productive zone and proposed new productive zone. If proposal is to drill or deepen directionally, give pertinent data on subsurface locations and measured and true vertical depths. Give blowout preventer program, if any.

24.

SIGNED

Operations Manager

DATE 2/1/85

(This space for Federal or State office use.)

PERMIT NO.

NOV 06 1985

APPROVAL DATE

APPROVED
AS AMENDED

APPROVED BY

CONDITIONS OF APPROVAL, IF ANY:

OIL CON. DIV.
DIST. 3

NMOCC

*See Instructions On Reverse Side

NOV 01 1985

/s/ J. Stan McKee

M. MILLENBACH
AREA MANAGER

All distances must be from the outer boundaries of the Section.

Operator MERRION OIL & GAS CORPORATION			Lease SUSCO-FEDERAL		Well No. 2
Unit Letter I	Section 9	Township 26N	Range 12W	County San Juan	
Actual Footage Location of Well: 1650 feet from the South line and 990 feet from the East line					
Ground Level Elev. 6049	Producing Formation Gallup		Pool Gallegos Gallup		Dedicated Acreage: 80 Acres

1. Outline the acreage dedicated to the subject well by colored pencil or hatchure marks on the plat below.
2. If more than one lease is dedicated to the well, outline each and identify the ownership thereof (both as to working interest and royalty).
3. If more than one lease of different ownership is dedicated to the well, have the interests of all owners been consolidated by communitization, unitization, force-pooling, etc?

☐ Yes ☐ No If answer is "yes," type of consolidation _____

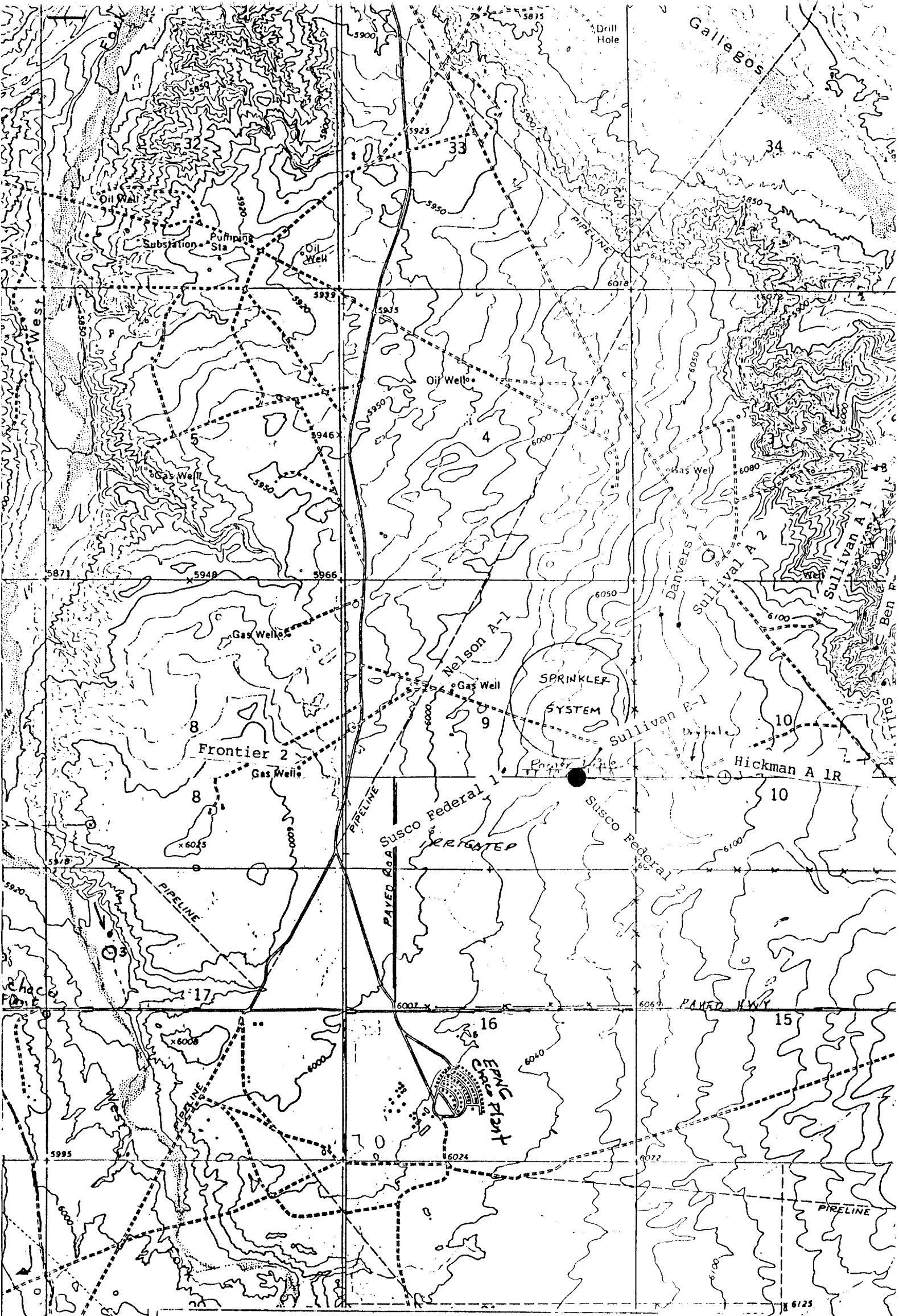
If answer is "no," list the owners and tract descriptions which have actually been consolidated. (Use reverse side of this form if necessary.) _____

No allowable will be assigned to the well until all interests have been consolidated (by communitization, unitization, forced-pooling, or otherwise) or until a non-standard unit, eliminating such interests, has been approved by the Commission.

<div style="text-align: center;"> <p>Sec.</p> <p>9</p> <p>Passing Line</p> <p>990'</p> <p>NM 021119</p> <p>1650'</p> </div>		<div style="text-align: center;"> <p>RECEIVED</p> <p>FEB 25 1985</p> <p>BUREAU OF LAND MANAGEMENT</p> <p>FARMINGTON RESOURCE AREA</p> <p>SPRINKLER</p> </div>	
<div style="text-align: center;"> <p>RECEIVED</p> <p>NOV 06 1985</p> <p>OIL CON. DIV</p> <p>DIST. 3</p> </div>			

Scale: 1"=1000'

<p>CERTIFICATION</p>	
<p>I hereby certify that the information contained herein is true and complete to the best of my knowledge and belief.</p>	
<p><i>Steve S. Dunn</i></p>	
<p>Name _____</p>	
<p>Position _____</p>	
<p>Operations Manager _____</p>	
<p>Company _____</p>	
<p>Merrion Oil & Gas Corp.</p>	
<p>Date _____</p>	
<p>2/1/85</p>	
<p>I hereby certify that the well location shown on this plat was plotted from field notes of actual surveys made by me or under my supervision, and that the same is true and correct to the best of my knowledge and belief.</p>	
<p>Date Surveyed _____</p>	
<p>REGISTERED LAND SURVEYOR</p>	
<p>Professional Engineer</p>	
<p>and Land Surveyor</p>	
<p>Fred B. Kerr</p>	
<p><i>Fred B. Kerr</i></p>	
<p>Certification No. _____</p>	
<p>2058 KEND IR.</p>	



Vicinity Map for
MERRION OIL & GAS CORPORATION #2 SUSCO-FEDERAL
1650'FSL 990'FEL Sec. 9-T26N-RL2W
SAN JUAN COUNTY, NEW MEXICO