

UNITED STATES
DEPARTMENT OF THE INTERIOR
BUREAU OF LAND MANAGEMENT

SUBMIT IN TRIPLICATE*
(Other instructions on
reverse side)

Form approved.
Budget Bureau No. 1004-0136
Expires August 31, 1985

APPLICATION FOR PERMIT TO DRILL, DEEPEN, OR PLUG BACK

1a. TYPE OF WORK
DRILL ☒ DEEPEN ☐ PLUG BACK ☐

b. TYPE OF WELL
OIL WELL ☐ GAS WELL ☒ OTHER ☐ SINGLE ZONE ☒ MULTIPLE ZONE ☐

2. NAME OF OPERATOR
El Paso Natural Gas Company

3. ADDRESS OF OPERATOR
PO Box 4289, Farmington, NM 87499

4. LOCATION OF WELL (Report location clearly and in accordance with any State requirement)
At surface 2250' 1825' N, 320' E 1610' E
At proposed prod. zone

14. DISTANCE IN MILES AND DIRECTION FROM NEAREST TOWN OR POST OFFICE*
16 miles south of Navajo City, NM

15. DISTANCE FROM PROPOSED* LOCATION TO NEAREST PROPERTY OR LEASE LINE, FT. (Also to nearest drlg. unit line, if any)
320'

18. DISTANCE FROM PROPOSED LOCATION* TO NEAREST WELL, DRILLING, COMPLETED, OR APPLIED FOR, ON THIS LEASE, FT.
4975'

21. ELEVATIONS (Show whether DF, RT, CR, etc.)
6183' CL

23. PROPOSED CASING AND CEMENTING PROGRAM
"GENERAL REQUIREMENTS"

SIZE OF HOLE	SIZE OF CASING	WEIGHT PER FOOT	SETTING DEPTH
12 1/4"	9 5/8"	32.3#	200'
8 3/4"	7"	20.0#	2560'
6 1/4"	4 1/2"	10.5#	2410-4975'

Selectively perforate and sand water fracture the Mesa Verde formation.

A 3000 psi WP and 6000 psi test double gate preventer equipped with blind and pipe rams will be used for blow out prevention on this well.

This gas is dedicated.

The E/2 of Section 1 is dedicated to this well.

RECEIVED
DEC 09 1985
OIL CON. DIV.
DIST. 3

IN ABOVE SPACE DESCRIBE PROPOSED PROGRAM: If proposal is to deepen or plug back, give data on present productive zone and proposed new productive zone. If proposal is to drill or deepen directionally, give pertinent data on subsurface locations and measured and true vertical depths. Give blowout preventer program, if any.

24. SIGNED Reggie Laab TITLE Drilling Clerk DATE 10-22-85

(This space for Federal or State office use)

PERMIT NO. APPROVAL DATE

APPROVED BY TITLE DATE DEC 08 1985

CONDITIONS OF APPROVAL, IF ANY:

Hold C-104 for USL

NMOCC

*See Instructions On Reverse Side

for M. MILLENBACH
AREA MANAGER

RECEIVED
SSA IN
ON SLAT
DEC 09 1985

AT
DEC 09 1985

OIL CON. DIV
DIST. 3

1. Outline the acreage dedicated to the subject well by colored pencil or hachure marks on the plat below.
2. If more than one lease is dedicated to the well, outline each and identify the ownership thereof (both as to working interest and royalty).
3. If more than one lease of different ownership is dedicated to the well, have the interests of all owners been consolidated by communitization, unitization, force-pooling, etc?

☐ Yes ☐ No If answer is "yes," type of consolidation _____

If answer is "no," list the owners and tract descriptions which have actually been consolidated. (Use reverse side of this form if necessary.) _____

No allowable will be assigned to the well until all interests have been consolidated (by communitization, unitization, forced-pooling, or otherwise) or until a non-standard unit, eliminating such interests, has been approved by the Commission.

RECEIVED
 NOV 13 1985
 BUREAU OF LAND MANAGEMENT
 FARMINGTON RESOURCE AREA

64°02' N
 106°15' W

2250'
 1610'
 HIGH
 MESA
 VERY SHEER CLIFFS
 1

I hereby certify that the information contained herein is true and complete to the best of my knowledge and belief.

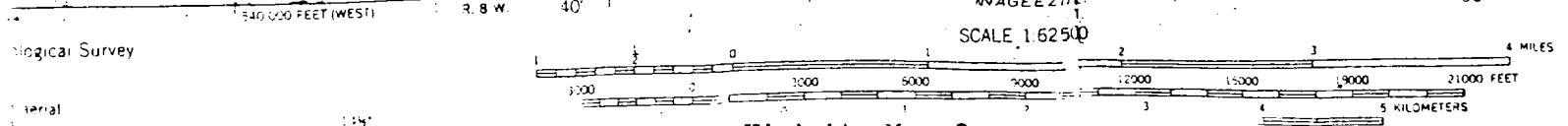
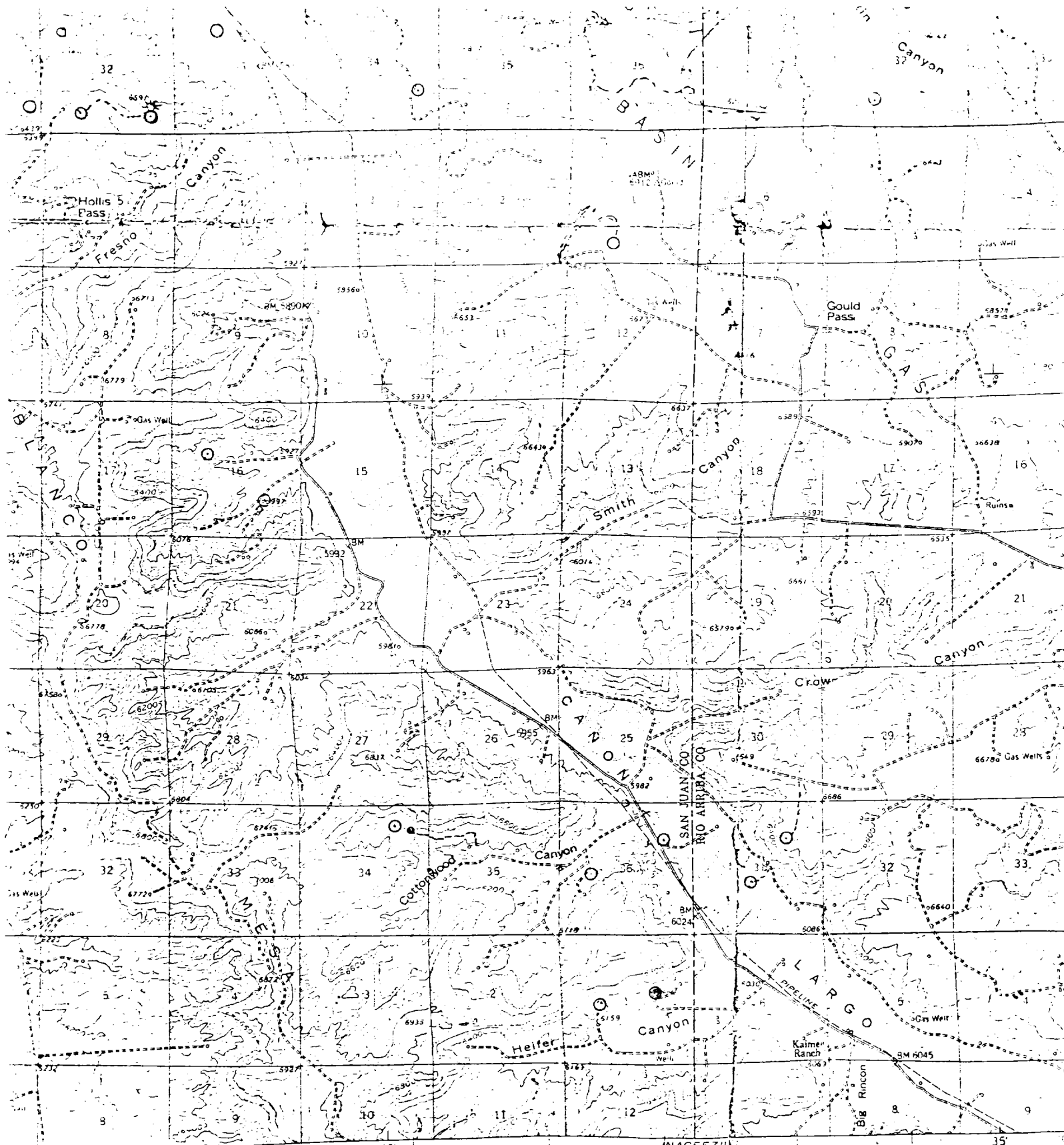
Date _____

I hereby certify that the well location shown on this plat was plotted from field notes of actual surveys made by me or under my supervision, and that the same is true and correct to the best of my knowledge and belief.

Date Surveyed: September 27, 1995
Registered Professional Engineer and Land Surveyor: 81

Fred B Co. Inc

3950



Vicinity Map for
 EL PASO NATURAL GAS CO. #4 LUTHY "A"
 2250'FNL 1610'FEL Sec. 1-T26N-R8W
 SAN JUAN COUNTY, NEW MEXICO

FOR SALE BY U.S. GEOLOGICAL SURVEY, DENVER, COLORADO OR WASHINGTON, D.C.
 A FOLDER DESCRIBING THE MAPS AND THE SURVEY IS AVAILABLE FROM THE SURVEY.