

UNITED STATES
DEPARTMENT OF THE INTERIOR
BUREAU OF LAND MANAGEMENT

SUBMIT IN TRIPLICATE*
(Other instructions on
reverse side)

Form approved.
Budget Bureau No. 1004-0136
Expires August 31, 1985

5. LEASE DESIGNATION AND SERIAL NO.
SF 077980A

6. IF INDIAN, ALLOTTEE OR TRIBE NAME

7. UNIT AGREEMENT NAME
Huerfano Unit

8. FARM OR LEASE NAME
Huerfano Unit

9. WELL NO.
159E

10. FIELD AND POOL, OR WILDCAT
Basin Dakota

11. SEC., T., R., M., OR BLK.
AND SURVEY OR AREA
M Sec. 17, T-26-N, R-9-W
NMPM

12. COUNTY OR PARISH
San Juan

13. STATE
NM

APPLICATION FOR PERMIT TO DRILL, DEEPEN, OR PLUG BACK

1a. TYPE OF WORK
DRILL ☒ DEEPEN ☐ PLUG BACK ☐

b. TYPE OF WELL
OIL WELL ☐ GAS WELL ☒ OTHER ☐
SINGLE ZONE ☒ MULTIPLE ZONE ☐

2. NAME OF OPERATOR
El Paso Natural Gas Company

3. ADDRESS OF OPERATOR
PO Box 4289, Farmington, NM 87499

4. LOCATION OF WELL (Report location clearly and in accordance with State requirements.)
At surface
990'S, 795'W
At proposed prod. zone

RECEIVED
DEC 16 1985

14. DISTANCE IN MILES AND DIRECTION FROM NEAREST TOWN OR POST OFFICE*
18 miles SE of Bloomfield, NM

15. DISTANCE FROM PROPOSED* LOCATION TO NEAREST PROPERTY OR LEASE LINE, FT. (Also to nearest drlg. unit line, if any)
795'

18. DISTANCE FROM PROPOSED LOCATION* TO NEAREST WELL, DRILLING, COMPLETED, OR APPLIED FOR, ON THIS LEASE, FT.
3500'

16. NO. OF ACRES IN LEASE
Unit

19. PROPOSED DEPTH
6645'

17. NO. OF ACRES ASSIGNED TO THIS WELL
320.00

20. ROTARY OR CABLE TOOLS
Rotary

21. ELEVATIONS (Show whether DF, RT, GR, etc.)
6433' GL

22. APPROX. DATE WORK WILL START*
This action is subject to technical and procedural review pursuant to 43 CFR 3165.3 and appeal pursuant to 43 CFR 3165.4.

SIZE OF HOLE	SIZE OF CASING	WEIGHT PER FOOT	SETTING DEPTH	QUANTITY OF CEMENT
12 1/4"	8 5/8"	36.0#	200'	165 cu.ft.circulated
7 7/8"	4 1/2"	10.5#&11.6#	6645'	1429 cu.ft.circulated

1st stage - 384 cu.ft. to cover Gallup
2nd stage - 512 cu.ft. to cover Mesa Verde
3rd stage - 533 cu.ft. to cover surface

Selectively perforate and sand water fracture the Dakota formation.

A 3000 psi WP and 6000 psi test double gate preventer equipped with blind and pipe rams will be used for blow out prevention on this well.

This gas is dedicated.

The W/2 of Section 17 is dedicated to this well.

RECEIVED

JAN 13 1986

OIL CON. DIV.

DIST 3

IN ABOVE SPACE DESCRIBE PROPOSED PROGRAM: If proposal is to deepen or plug back, give data on present productive well and proposed new productive zone. If proposal is to drill or deepen directionally, give pertinent data on subsurface locations and measured and true vertical depths. Give blowout preventer program, if any.

24. SIGNED [Signature] TITLE Drilling Clerk DATE 12-12-85

(This space for Federal or State office use)

PERMIT NO. _____ APPROVAL DATE _____

APPROVED BY _____ TITLE _____ DATE _____
CONDITIONS OF APPROVAL, IF ANY:

OK
76

NMOCC

/s/ J. Stan McKee

*See Instructions On Reverse Side

OIL CONSERVATION DIVISION

STATE OF NEW MEXICO
ENERGY AND MINERALS DEPARTMENTP. O. BOX 2088
SANTA FE, NEW MEXICO 87501Form C-102
Revised 10-1-78

All distances must be from the outer boundaries of the Section.

Operator El Paso Natural Gas Company			Lease Huerfano Unit (SF 077980A)			Well No. 159E		
Unit Letter M	Section 17	Township 26 North	Range 9 West	County San Juan				
Actual Footage Location of Well: 990 feet from the South line and 795 feet from the West line								
Ground Level Elev. 6433	Producing Formation Dakota			Pool Basin			Dedicated Acreage: 320 Acres	

1. Outline the acreage dedicated to the subject well by colored pencil or hatchure marks on the plat below.
2. If more than one lease is dedicated to the well, outline each and identify the ownership thereof (both as to working interest and royalty).
3. If more than one lease of different ownership is dedicated to the well, have the interests of all owners been consolidated by communitization, unitization, force-pooling, etc?

☒ Yes ☐ No If answer is "yes," type of consolidation Unitization

If answer is "no," list the owners and tract descriptions which have actually been consolidated. (Use reverse side of this form if necessary.)

No allowable will be assigned to the well until all interests have been consolidated (by communitization, unitization, forced-pooling, or otherwise) or until a non-standard unit, eliminating such interests, has been approved by the Division.

RECEIVED

DEC 16 1985

BUREAU OF LAND MANAGEMENT
FARMINGTON RESOURCE AREA

Sec.

17

RECEIVED

JAN 13 1986
OIL CON. DIV.
DIST. 3

CERTIFICATION

I hereby certify that the information contained herein is true and complete to the best of my knowledge and belief.

Name

Drilling Clerk

Position

El Paso Natural Gas

Company

Date

I hereby certify that the well location shown on this plat was plotted from field notes of actual surveys made by me or under my supervision, and that the same is true and correct to the best of my knowledge and belief.

November 13, 1985

Date Surveyed

David O. Vilven

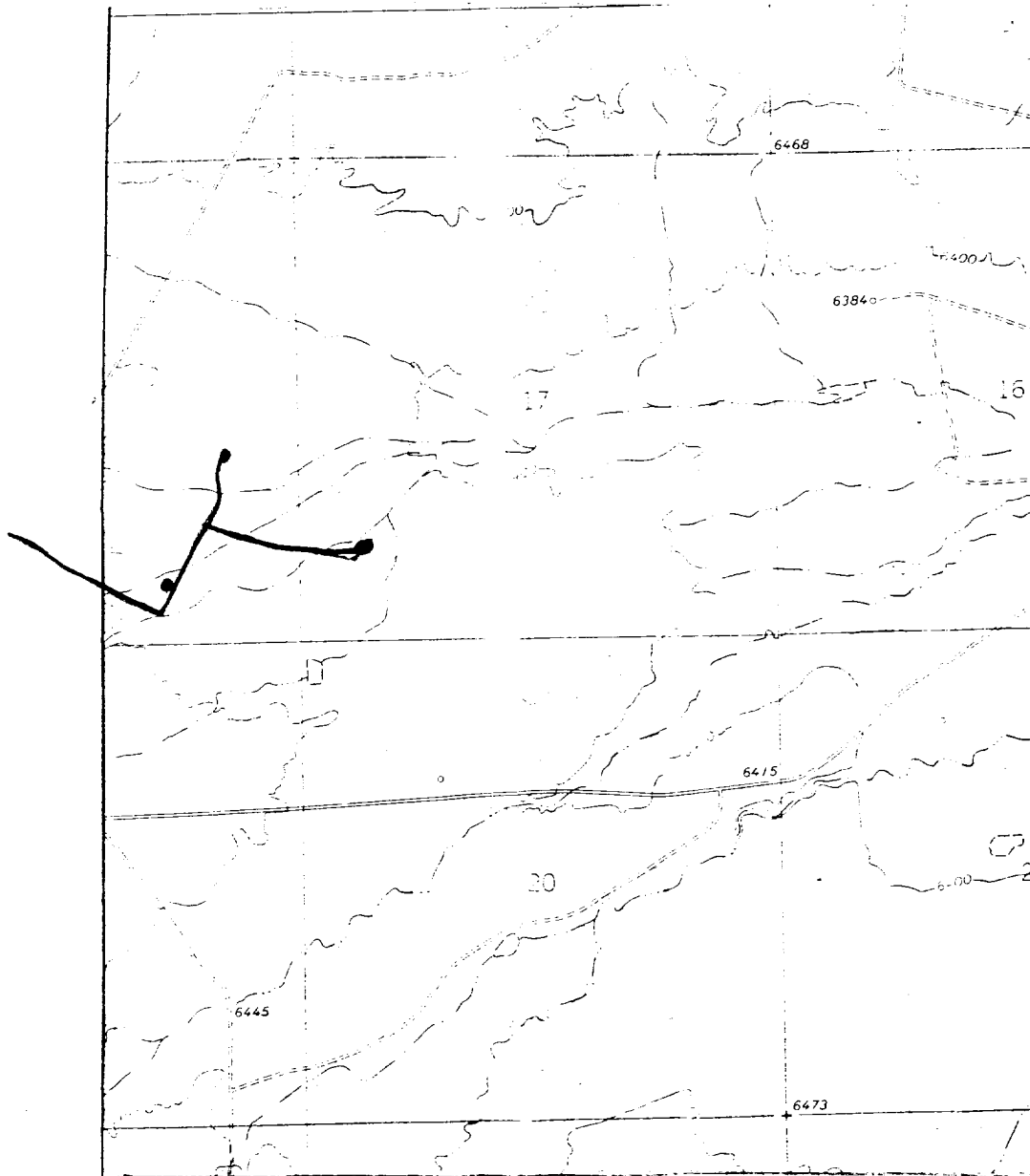
Registered Professional Engineer
and/or Land Surveyor

Certificate No.

1760

Huerfano Unit #159 E
 SWSW 17-26-9 (DK)

990 5 795 10



Map #1

LEGEND OF RIGHT-OF-WAYS

- EXISTING ROADS —————
- EXISTING PIPELINES + + +
- EXISTING ROAD & PIPELINE ++++
- PROPOSED ROADS —————
- PROPOSED PIPELINES + + +
- PROPOSED ROAD & PIPELINE -++-