

UNITED STATES
DEPARTMENT OF THE INTERIOR
BUREAU OF LAND MANAGEMENT

APPLICATION FOR PERMIT TO DRILL, DEEPEN, OR PLUG BACK

1a. TYPE OF WORK

DRILL ☒

DEEPEN ☐

PLUG BACK ☐

b. TYPE OF WELL

OIL
WELL ☐

GAS
WELL ☒

OTHER

SINGLE
ZONE ☒

MULTIPLE
ZONE ☐

2. NAME OF OPERATOR

El Paso Natural Gas Company

3. ADDRESS OF OPERATOR

PO Box 4289, Farmington, NM 87499

4. LOCATION OF WELL (Report location clearly and in accordance with any State requirements.)

At surface

1450'N, 790'E

At proposed prod. zone

14. DISTANCE IN MILES AND DIRECTION FROM NEAREST TOWN OR POST OFFICE

18 miles SE of Bloomfield, NM

15. DISTANCE FROM PROPOSED*

LOCATION TO NEAREST
PROPERTY OR LEASE LINE, FT.
(Also to nearest drlg. unit line, if any)

790'

18. DISTANCE FROM PROPOSED LOCATION*
TO NEAREST WELL, DRILLING, COMPLETED,
OR APPLIED FOR, ON THIS LEASE, FT.

3000'

21. ELEVATIONS (Show whether DF, RT, GR, etc.)

6439'GL

23.

PROPOSED CASING AND CEMENTING PROGRAM

SIZE OF HOLE	SIZE OF CASING	WEIGHT PER FOOT	SETTING DEPTH	QUANTITY OF CEMENT
12 1/4"	8 5/8"	36.0#	200'	165 cu.ft. circulated
7 7/8"	4 1/2"	10.5#&11.6#	6730'	1436 cu.ft. circulated

1st stage - 417 cu.ft. to cover Gallup
2nd stage - 516 cu.ft. to cover Mesa Verde
3rd stage - 503 cu.ft. to cover surface

Selectively perforate and sand water fracture the Dakota formation.

A 3000 psi WP and 6000 psi test double gate preventer equipped with
blind and pipe rams will be used for blow out prevention on this well.

This gas is dedicated.

The N/2 of Section 20 is dedicated to this well.

RECEIVED

JAN 13 1986

OIL CON. DIV.

DIST. 3

IN ABOVE SPACE DESCRIBE PROPOSED PROGRAM: If proposal is to deepen or plug back, give data on present productive zone and proposed new productive zone. If proposal is to drill or deepen directionally, give pertinent data on subsurface locations and measured and true vertical depths. Give blowout preventer program, if any.

24.

SIGNED *Peggy Quak*

Drilling Clerk

12-12-85

SIGNED

TITLE

DATE

(This space for Federal or State office use)

PERMIT NO.

APPROVAL DATE

APPROVED BY

TITLE

DATE

CONDITIONS OF APPROVAL, IF ANY:

NMOCC

*See Instructions On Reverse Side

J. Stan McKee

OIL CONSERVATION DIVISION

STATE OF NEW MEXICO
ENERGY AND MINERALS DEPARTMENTP. O. BOX 2088
SANTA FE, NEW MEXICO 87501Form C-102
Revised 10-1-78

All distances must be from the outer boundaries of the Section.

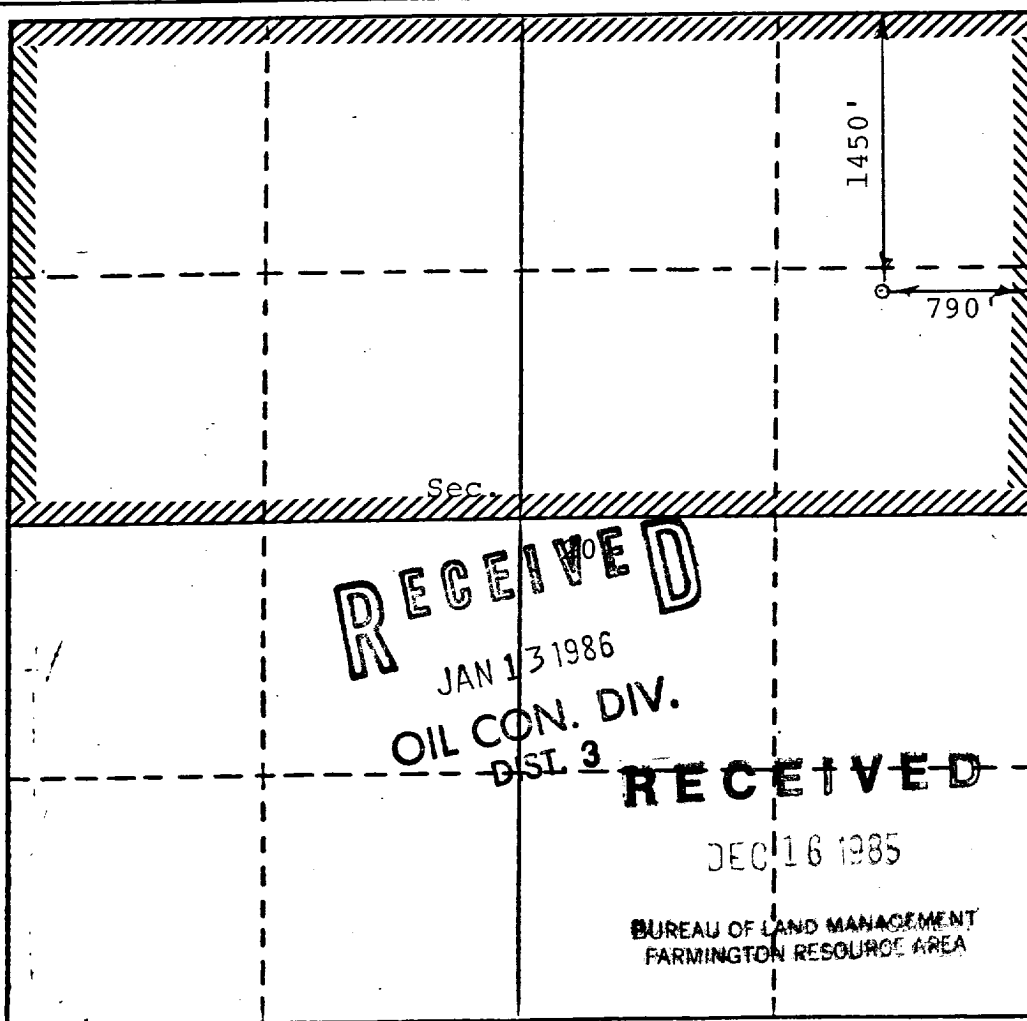
Operator El Paso Natural Gas Company		Lease Huerfano Unit (NM 03493)		Well No. 111E
Unit Letter H	Section 20	Township 26	Range 9	County San Juan
Actual Footage Location of Well: 1450 feet from the North line and 790 feet from the East line				
Ground Level Elev. 6439	Producing Formation Dakota	Pool Basin	Dedicated Acreage: 320 Acres	

1. Outline the acreage dedicated to the subject well by colored pencil or hatchure marks on the plat below.
2. If more than one lease is dedicated to the well, outline each and identify the ownership thereof (both as to working interest and royalty).
3. If more than one lease of different ownership is dedicated to the well, have the interests of all owners been consolidated by communitization, unitization, force-pooling, etc?

☒ Yes ☐ No If answer is "yes," type of consolidation Unitization

If answer is "no," list the owners and tract descriptions which have actually been consolidated. (Use reverse side of this form if necessary.)

No allowable will be assigned to the well until all interests have been consolidated (by communitization, unitization, forced-pooling, or otherwise) or until a non-standard unit, eliminating such interests, has been approved by the Division.



CERTIFICATION

I hereby certify that the information contained herein is true and complete to the best of my knowledge and belief.

Name
Drilling Clerk
Position
El Paso Natural Gas
Company
12-12-85
Date

I hereby certify that the well location shown on this plat was plotted from field notes of actual surveys made by me or under my supervision, and that the same is true and correct to the best of my knowledge and belief.

November 11, 1985

Date Surveyed
David O. Vilven

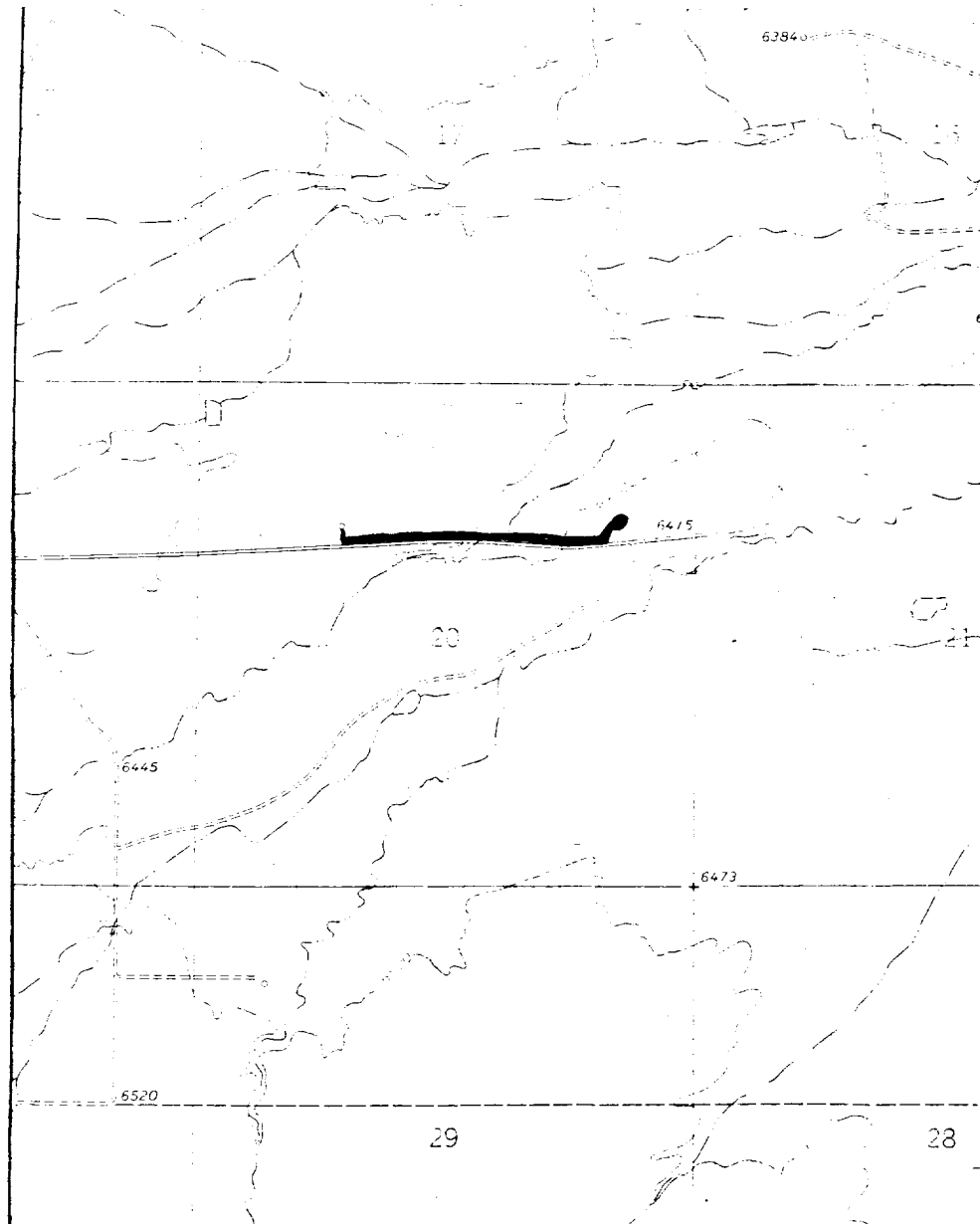
Registered Professional Engineer
and/or Land Surveyor

David O. Vilven
Certificate No.

1760


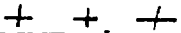
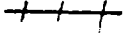


0 330 660 990 1320 1650 1980 2310 2640 2000 1500 1000 500 0

Huerfano Unit #111 E
 SENE 20-26-9 (DK)



Map #1

LEGEND OF RIGHT-OF-WAYS

- EXISTING ROADS 
- EXISTING PIPELINES 
- EXISTING ROAD & PIPELINE 
- PROPOSED ROADS 
- PROPOSED PIPELINES 
- PROPOSED ROAD & PIPELINE 