

UNITED STATES  
DEPARTMENT OF THE INTERIOR  
BUREAU OF LAND MANAGEMENT

APPLICATION FOR PERMIT TO DRILL, DEEPEN, OR PLUG BACK

1a. TYPE OF WORK

DRILL  DEEPEN  PLUG BACK

b. TYPE OF WELL

OIL WELL  GAS WELL  OTHER  SINGLE ZONE  MULTIPLE ZONE

2. NAME OF OPERATOR

El Paso Natural Gas Company

3. ADDRESS OF OPERATOR

PO Box 4289, Farmington, NM 87499

4. LOCATION OF WELL (Report location clearly and in accordance with State requirements.)  
At surface

1180'N, 1080'E

At proposed prod. zone

14. DISTANCE IN MILES AND DIRECTION FROM NEAREST TOWN OR POST OFFICE\*

16 miles SE of Bloomfield, NM

15. DISTANCE FROM PROPOSED\* LOCATION TO NEAREST PROPERTY OR LEASE LINE, FT.

930'

(Also to nearest drlg. unit line, if any)

16. NO. OF ACRES IN LEASE

Unit 80

17. NO. OF ACRES ASSIGNED TO THIS WELL

E 320.00

18. DISTANCE FROM PROPOSED LOCATION\* TO NEAREST WELL, DRILLING, COMPLETED, OR APPLIED FOR, ON THIS LEASE, FT.

1100

19. PROPOSED DEPTH

6820'

20. ROTARY OR CABLE TOOLS

Rotary

21. ELEVATIONS (Show whether DF, RT, GR, etc.)

22. APPROX. DATE WORK WILL START\*

66536641-GL

DRILLING OPERATIONS AUTHORIZED ARE  
SUBJECT TO COMPLIANCE WITH ATTACHED  
"GENERAL REQUIREMENTS"

23. PROPOSED CASING AND CEMENTING PROGRAM

SIZE OF HOLE	SIZE OF CASING	WEIGHT PER FOOT	SETTING DEPTH	QUANTITY OF CEMENT
12 1/4"	8 5/8"	24.0#	200'	165 cu.ft.circulated
7 7/8"	4 1/2"	10.5#&11.6#	6820'	1448 cu.ft.circulated

1st stage - 403 cu.ft. to cover Gallup  
2nd stage - 521 cu.ft. to cover Mesa Verde  
3rd stage - 524 cu.ft. to cover surface

Selectively perforate and sand water fracture the Dakota formation.

A 3000 psi WP and 6000 psi test double gate preventer equipped with blind and pipe rams will be used for blow out prevention on this well.

This gas is dedicated.

The E/2 of Section 23 is dedicated to this well.

IN ABOVE SPACE DESCRIBE PROPOSED PROGRAM: If proposal is to deepen or plug back, give data on present productive zone and proposed new productive zone. If proposal is to drill or deepen directionally, give pertinent data on subsurface locations and measured and true vertical depths. Give blowout preventer program, if any.

24. SIGNED Peggy Deal TITLE Drilling Clerk DATE 9-25-85

(This space for Federal or State office use)

PERMIT NO. \_\_\_\_\_ APPROVAL DATE \_\_\_\_\_

APPROVED BY \_\_\_\_\_ TITLE \_\_\_\_\_ DATE \_\_\_\_\_

CONDITIONS OF APPROVAL, IF ANY:

OK  
3/10

RMCCG

\*See Instructions On Reverse Side

/s/ J. Stan McKee

fw

NEW MEXICO OIL CONSERVATION COMMISSION  
WELL LOCATION AND ACREAGE DEDICATION PLAT

Form O-102  
Supersedes O-128  
Effective 1-1-65

All distances must be from the outer boundaries of the Section.

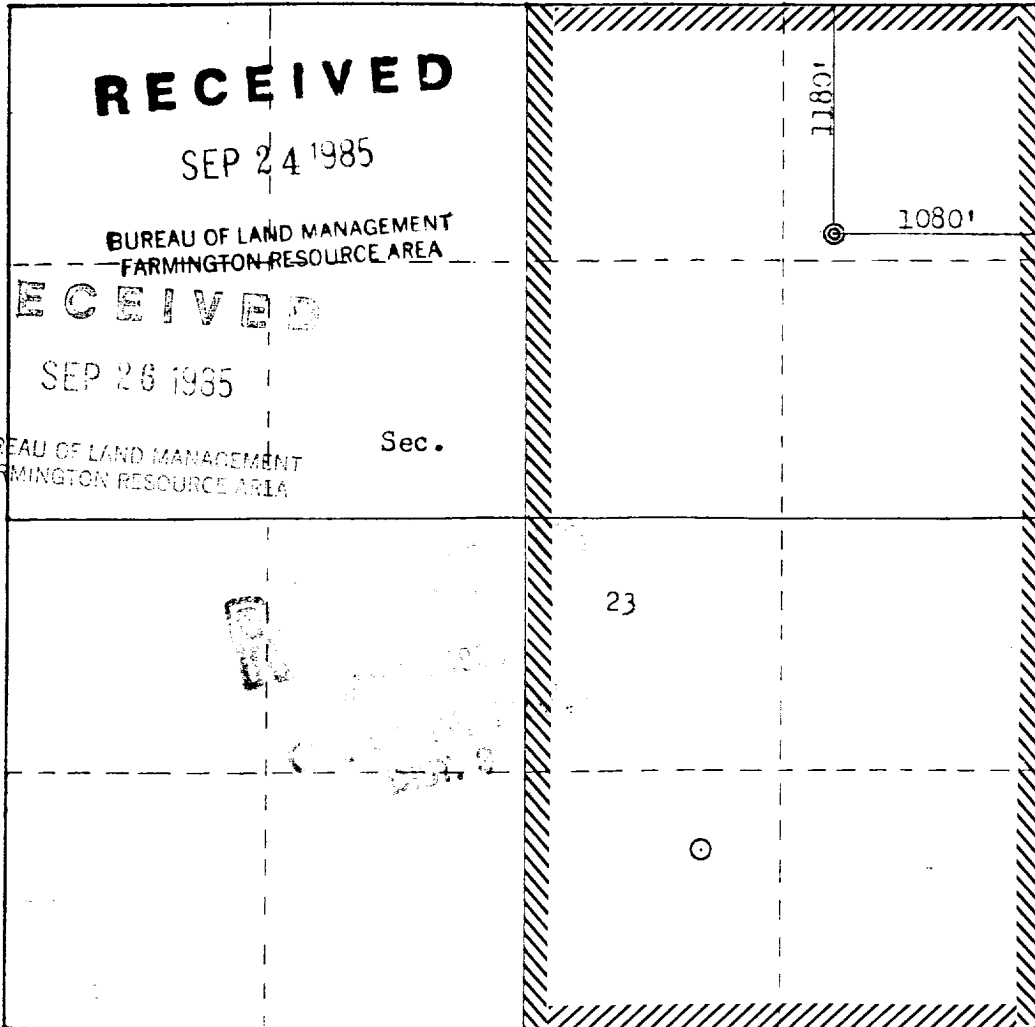
Operator EL PASO NATURAL GAS COMPANY		Lease HUERFANO UNIT (NM 01369)		Well No. 168E
Unit Letter A	Section 23	Township 26N	Range 10W	County San Juan
Actual Footage Location of Well: 1180 feet from the North line and 1080 feet from the East line				
Ground Level Elev: 6653	Producing Formation Dakota	Pool Basin	Dedicated Acreage: 320 Acres	

1. Outline the acreage dedicated to the subject well by colored pencil or hachure marks on the plat below.
2. If more than one lease is dedicated to the well, outline each and identify the ownership thereof (both as to working interest and royalty).
3. If more than one lease of different ownership is dedicated to the well, have the interests of all owners been consolidated by communitization, unitization, force-pooling, etc?

Yes  No If answer is "yes," type of consolidation Unitization

If answer is "no," list the owners and tract descriptions which have actually been consolidated. (Use reverse side of this form if necessary.) \_\_\_\_\_

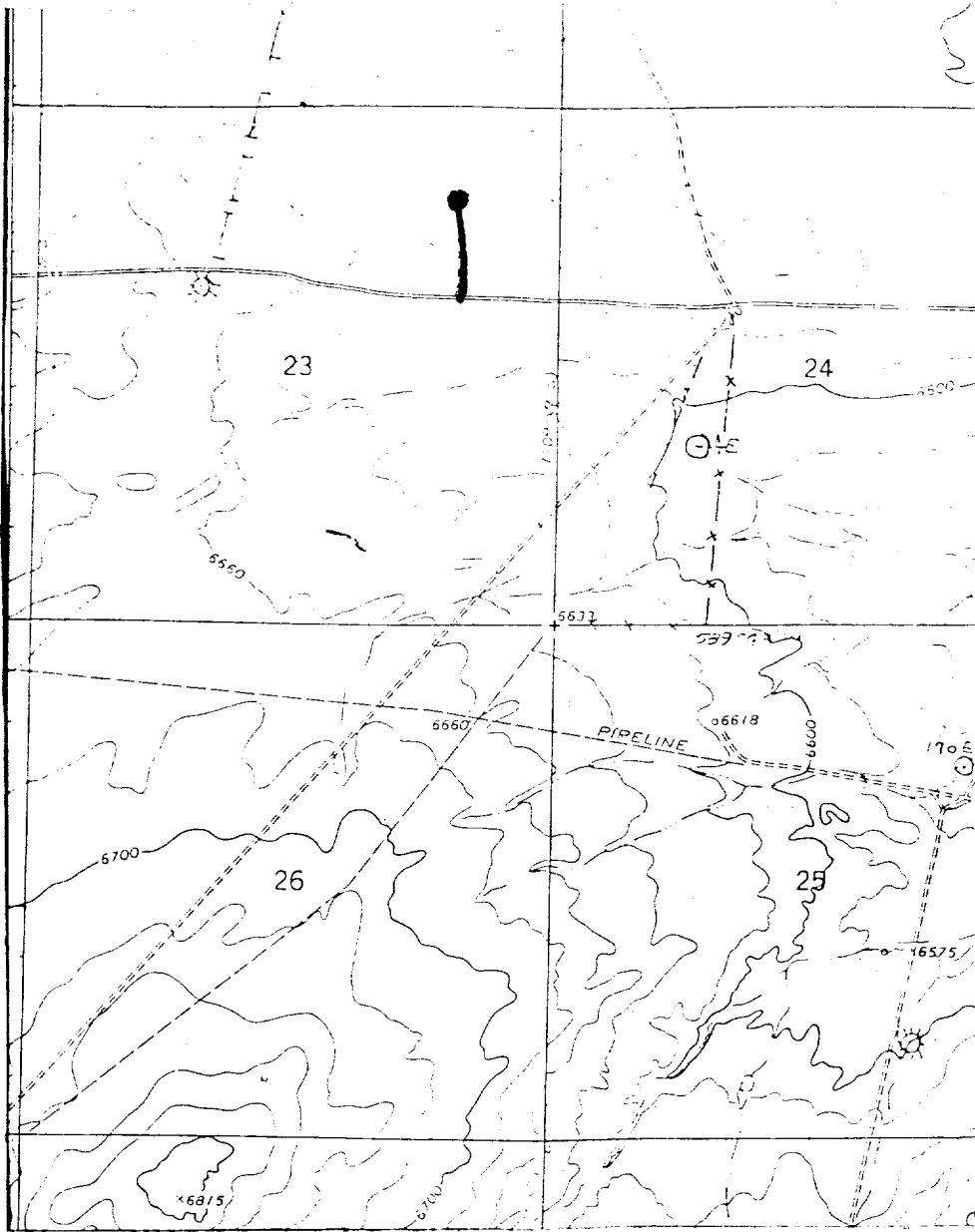
No allowable will be assigned to the well until all interests have been consolidated (by communitization, unitization, forced-pooling, or otherwise) or until a non-standard unit, eliminating such interests, has been approved by the Commission. Note: location restaked 9-20-85



Scale: 1"=1000'

CERTIFICATION	
I hereby certify that the information contained herein is true and complete to the best of my knowledge and belief.	
<i>[Signature]</i>	
Name	Drilling Clerk
Position	El Paso Natural Gas
Company	9-24-85
Date	
I hereby certify that the well location shown on this plat was plotted from field notes of actual surveys made by me or under my supervision, and that the same is true and correct to the best of my knowledge and belief.	
Date Surveyed	September 13, 1985
Registered Professional Engineer and Land Surveyor	<i>[Signature]</i> Fred B. Kerr Jr.
Certificate No.	3950

Huerfano U. #168E  
NENE 23-26-10 (DK)



Map #1

LEGEND OF RIGHT-OF-WAYS

- EXISTING ROADS —————
- EXISTING PIPELINES + + +
- EXISTING ROAD & PIPELINE + + +
- PROPOSED ROADS —————
- PROPOSED PIPELINES + + +
- PROPOSED ROAD & PIPELINE + + +