

UNITED STATES
DEPARTMENT OF THE INTERIOR
BUREAU OF LAND MANAGEMENT

APPLICATION FOR PERMIT TO DRILL, DEEPEN, OR PLUG BACK

1a. TYPE OF WORK

DRILL ☒

DEEPEN ☐

PLUG BACK ☐

b. TYPE OF WELL

OIL
WELL ☐

GAS
WELL ☒

OTHER

SINGLE
ZONE ☒

MULTIPLE
ZONE ☐

2. NAME OF OPERATOR

El Paso Natural Gas Company

3. ADDRESS OF OPERATOR

PO Box 4289, Farmington, NM 87499

4. LOCATION OF WELL (Report location clearly and in accordance with State requirements.)

At surface

1180'S, 1840'W

At proposed prod. zone

14. DISTANCE IN MILES AND DIRECTION FROM NEAREST TOWN OR POST OFFICE*

18 miles SE of Bloomfield, NM

BUREAU OF LAND MANAGEMENT
FARMINGTON RESOURCE AREA

15. DISTANCE FROM PROPOSED*

LOCATION TO NEAREST
PROPERTY OR LEASE LINE, FT.
(Also to nearest drlg. unit line, if any)

1180'

16. NO. OF ACRES IN LEASE

Unit 320

17. NO. OF ACRES ASSIGNED
TO THIS WELL

W 320.31

18. DISTANCE FROM PROPOSED LOCATION*

TO NEAREST WELL, DRILLING, COMPLETED,
OR APPLIED FOR, ON THIS LEASE, FT.

1200'

19. PROPOSED DEPTH

6930'

20. ROTARY OR CABLE TOOLS

Rotary

21. ELEVATIONS (Show whether DE, RT, GB, etc.)

6673' GL

DRILLING OPERATIONS AUTHORIZED ARE

SUBJECT TO COMPLIANCE WITH ATTACHED

"GENERAL REQUIREMENTS"

This action is subject to technical and
procedural review pursuant to 43 CFR 3105.3
and appeal pursuant to 43 CFR 3105.4.

23. PROPOSED CASING AND CEMENTING PROGRAM

SIZE OF HOLE	SIZE OF CASING	WEIGHT PER FOOT	SETTING DEPTH	QUANTITY OF CEMENT
12 1/4"	8 5/8"	36.0#	200'	165 cu.ft. circulated
7 7/8"	4 1/2"	10.5# & 11 6#	6930'	1575 cu.ft. circulated

1st stage - 398 cu.ft. to cover Gallup

2nd stage - 534 cu.ft. to cover Mesa Verde

3rd stage - 663 cu.ft. to cover surface

Selectively perforate and sand water fracture the Dakota formation.

A 3000 psi WP and 6000 psi test double gate preventer equipped with
blind and pipe rams will be used for blow out prevention on this well.

This gas is dedicated.

The W/2 of Section 4 is dedicated to this well

IN ABOVE SPACE DESCRIBE PROPOSED PROGRAM: If proposal is to deepen or plug back, give data on present productive zone and proposed new productive zone. If proposal is to drill or deepen directionally, give pertinent data on subsurface locations and measured and true vertical depths. Give blowout preventer program, if any.

24.

SIGNED

Dean Doak

TITLE

Drilling Clerk

DATE

12-12-85

(This space for Federal or State office use)

PERMIT NO.

APPROVAL DATE

APPROVED BY

TITLE

DATE

CONDITIONS OF APPROVAL, IF ANY:

*See Instructions On Reverse Side

OIL CONSERVATION DIVISION

STATE OF NEW MEXICO
ENERGY AND MINERALS DEPARTMENTP. O. BOX 2088
SANTA FE, NEW MEXICO 87501Form C-102
Revised 10-1-78

All distances must be from the outer boundaries of the Section.

Operator El Paso Natural Gas Company			Lease Huerfano Unit (NM 01366)		Well No. 223E
Unit Letter N	Section 4	Township 26N	Range 10W	County San Juan	

Actual Footage Location of Well:

1180 feet from the - South line and 1840 feet from the West line

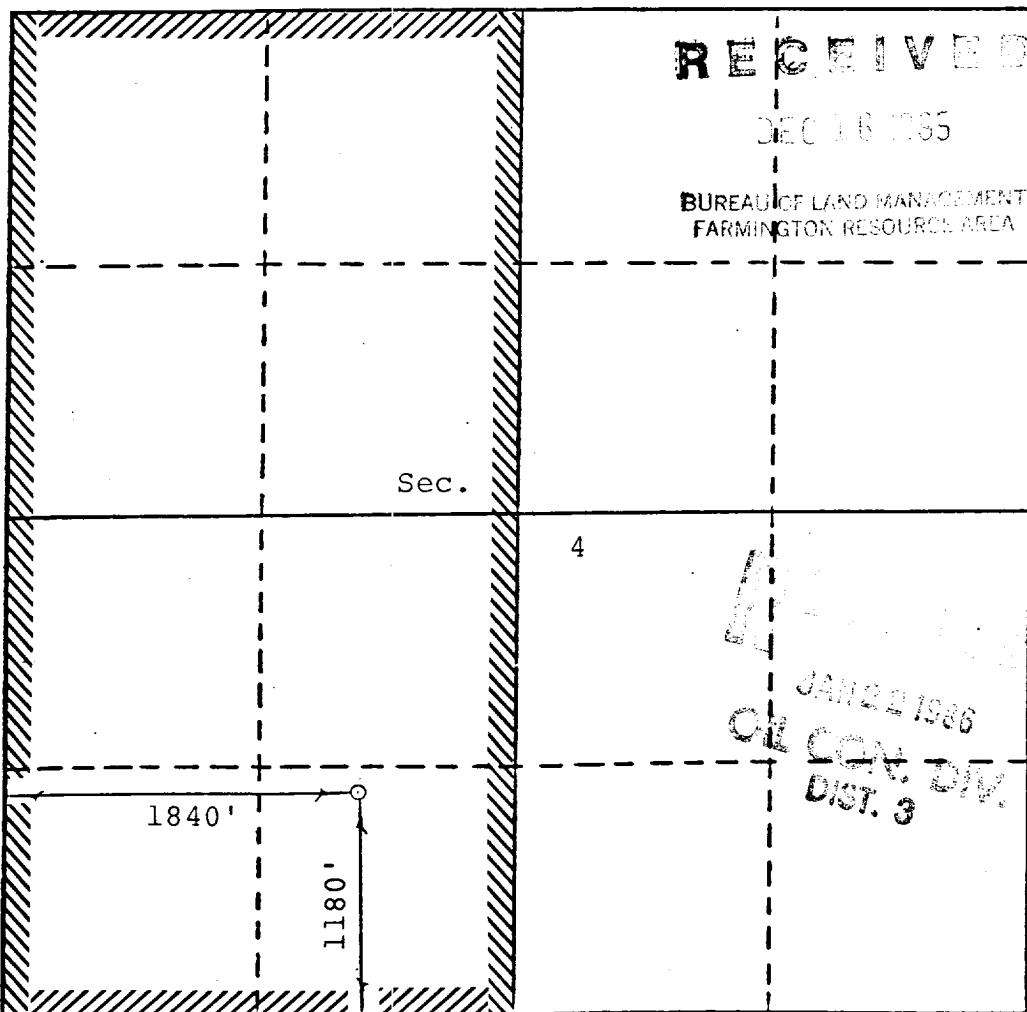
Ground Level Elev. 6673	Producing Formation Dakota	Pool Basin	Dedicated Acreage: 320.31 Acres
----------------------------	-------------------------------	---------------	------------------------------------

1. Outline the acreage dedicated to the subject well by colored pencil or hachure marks on the plat below.
2. If more than one lease is dedicated to the well, outline each and identify the ownership thereof (both as to working interest and royalty).
3. If more than one lease of different ownership is dedicated to the well, have the interests of all owners been consolidated by communitization, unitization, force-pooling, etc?

☒ Yes ☐ No If answer is "yes," type of consolidation Unitization

If answer is "no," list the owners and tract descriptions which have actually been consolidated. (Use reverse side of this form if necessary.)

No allowable will be assigned to the well until all interests have been consolidated (by communitization, unitization, forced-pooling, or otherwise) or until a non-standard unit, eliminating such interests, has been approved by the Division.



CERTIFICATION

I hereby certify that the information contained herein is true and complete to the best of my knowledge and belief.

Name
Drilling Clerk
Position
El Paso Natural Gas
Company
12-12-85

Date

I hereby certify that the well location shown on this plat was plotted from field notes of actual surveys made by me or under my supervision, and that the same is true and correct to the best of my knowledge and belief.

November 15, 1985

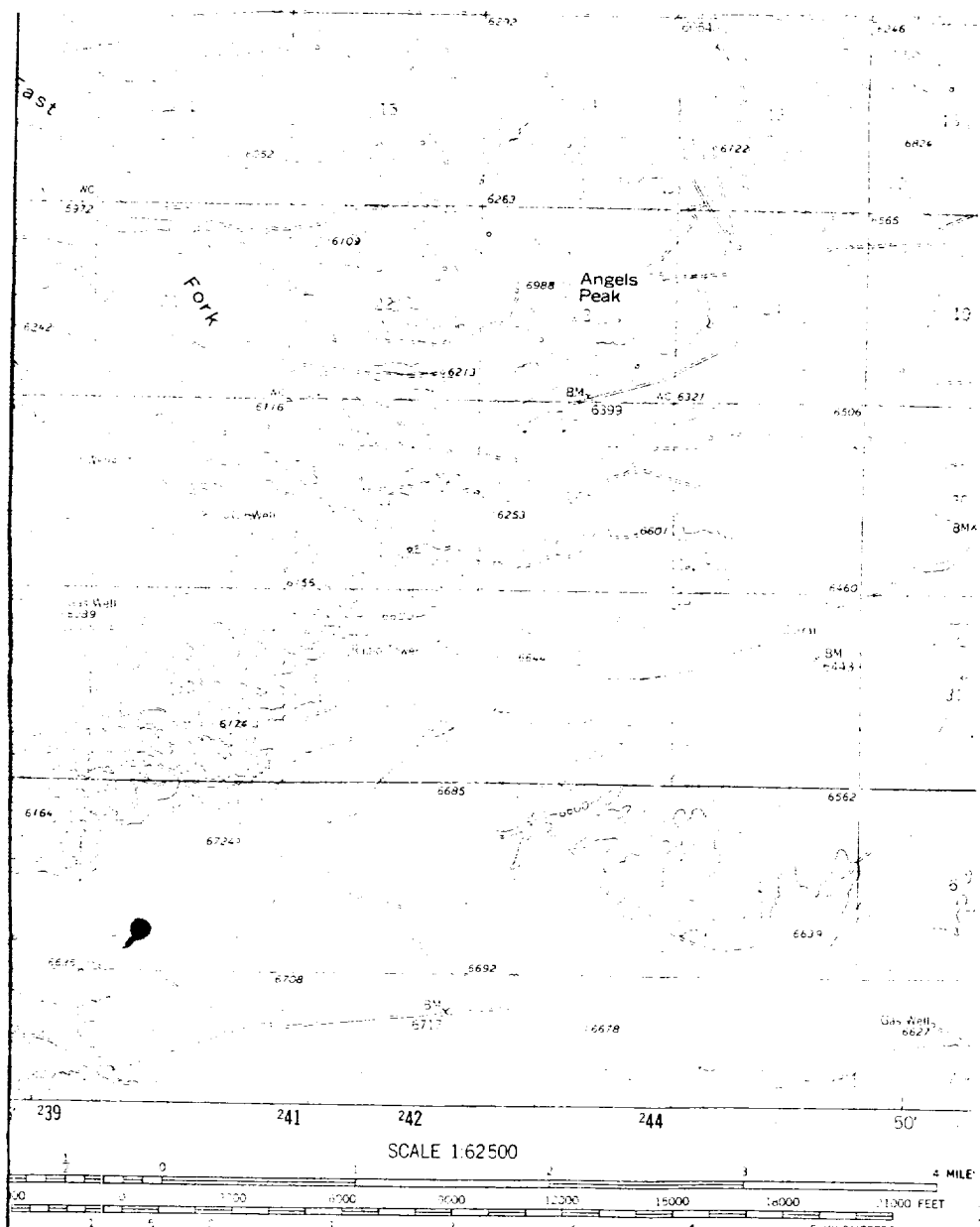
Date Surveyed
David O. Vilven

Registered Professional Engineer
and/or Land Surveyor

Certificate No.

1760

Huerfano Unit #223 E
 SESW 4-26-10 (DK)



LEGEND OF RIGHT-OF-WAYS

EXISTING ROADS

EXISTING PIPELINES

EXISTING ROAD & PIPELINE

PROPOSED ROADS

PROPOSED PIPELINES

PROPOSED ROAD & PIPELINE

Map #1