

UNITED STATES  
DEPARTMENT OF THE INTERIOR  
BUREAU OF LAND MANAGEMENT

APPLICATION FOR PERMIT TO DRILL, DEEPEN, OR PLUG BACK

1a. TYPE OF WORK

DRILL ☒

DEEPEN ☐

PLUG BACK ☐

b. TYPE OF WELL

OIL  
WELL ☐

GAS  
WELL ☒

OTHER ☐

SINGLE  
ZONE ☒

MULTIPLE  
ZONE ☐

2. NAME OF OPERATOR

El Paso Natural Gas Company

3. ADDRESS OF OPERATOR

P O Box 4289, Farmington, NM 87499

4. LOCATION OF WELL (Report location clearly and in accordance with any State laws and regulations.)

At surface  
1180'N, 1800'W

At proposed prod. zone

14. DISTANCE IN MILES AND DIRECTION FROM NEAREST TOWN OR POST OFFICE\*

17 miles SE of Bloomfield, NM

BUREAU OF LAND MANAGEMENT  
FARMINGTON RESOURCE AREA

15. DISTANCE FROM PROPOSED\*

LOCATION TO NEAREST  
PROPERTY OR LEASE LINE, FT.  
(Also to nearest drlg. unit line, if any)

1180'

16. NO. OF ACRES IN LEASE

Unit

17. NO. OF ACRES ASSIGNED  
TO THIS WELL

W 318.36

18. DISTANCE FROM PROPOSED LOCATION\*

TO NEAREST WELL, DRILLING, COMPLETED,  
OR APPLIED FOR, ON THIS LEASE, FT.

400'

19. PROPOSED DEPTH

6580'

20. ROTARY OR CABLE TOOLS

Rotary

21. ELEVATIONS (Show whether DF, RT, GR, etc.)

6464'GL

DRILLING OPERATIONS AUTHORIZED ARE  
SUBJECT TO COMPLIANCE WITH ATTACHED  
"GENERAL REQUIREMENTS"

This action is subject to technical and  
procedural review pursuant to 43 CFR 3165.3  
and appeal pursuant to 43 CFR 3165.4.

23.

PROPOSED CASING AND CEMENTING PROGRAM

22. APPROX. DATE WORK WILL START\*

SIZE OF HOLE	SIZE OF CASING	WEIGHT PER FOOT	SETTING DEPTH	QUANTITY OF CEMENT
12 1/4"	8 5/8"	36.0#	200'	165 cu.ft.circulated
7 7/8"	4 1/2"	10.5#&11.6#	6580'	1433 cu.ft.circulated

1st stage - 384 cu.ft. to cover Gallup  
2nd stage - 475 cu.ft. to cover Mesa Verde  
3rd stage - 574 cu.ft. to cover surface

Selectively perforate and sand water fracture the Dakota formation.

A 3000 psi WP and 6000 psi test double gate preventer equipped with  
blind and pipe rams will be used for blow out prevention on this well.

This gas is dedicated.

The W/2 of Section 18 is dedicated to this well.

IN ABOVE SPACE DESCRIBE PROPOSED PROGRAM: If proposal is to deepen or plug back, give data on present productive zone and proposed new productive zone. If proposal is to drill or deepen directionally, give pertinent data on subsurface locations and measured and vertical depth. Give blowout preventer program, if any.

24.

SIGNED

*[Signature]*

TITLE

Drilling Clerk

DATE

12-17-85

(This space for Federal or State office use)

PERMIT NO.

APPROVAL DATE

APPROVED BY

TITLE

DATE

CONDITIONS OF APPROVAL, IF ANY:

NMOCC

\*See Instructions On Reverse Side

NEW MEXICO OIL CONSERVATION COMMISSION  
WELL LOCATION AND ACREAGE DEDICATION PLAT

Form C-102  
Supersedes C-128  
Effective 1-1-65

All distances must be from the outer boundaries of the Section.

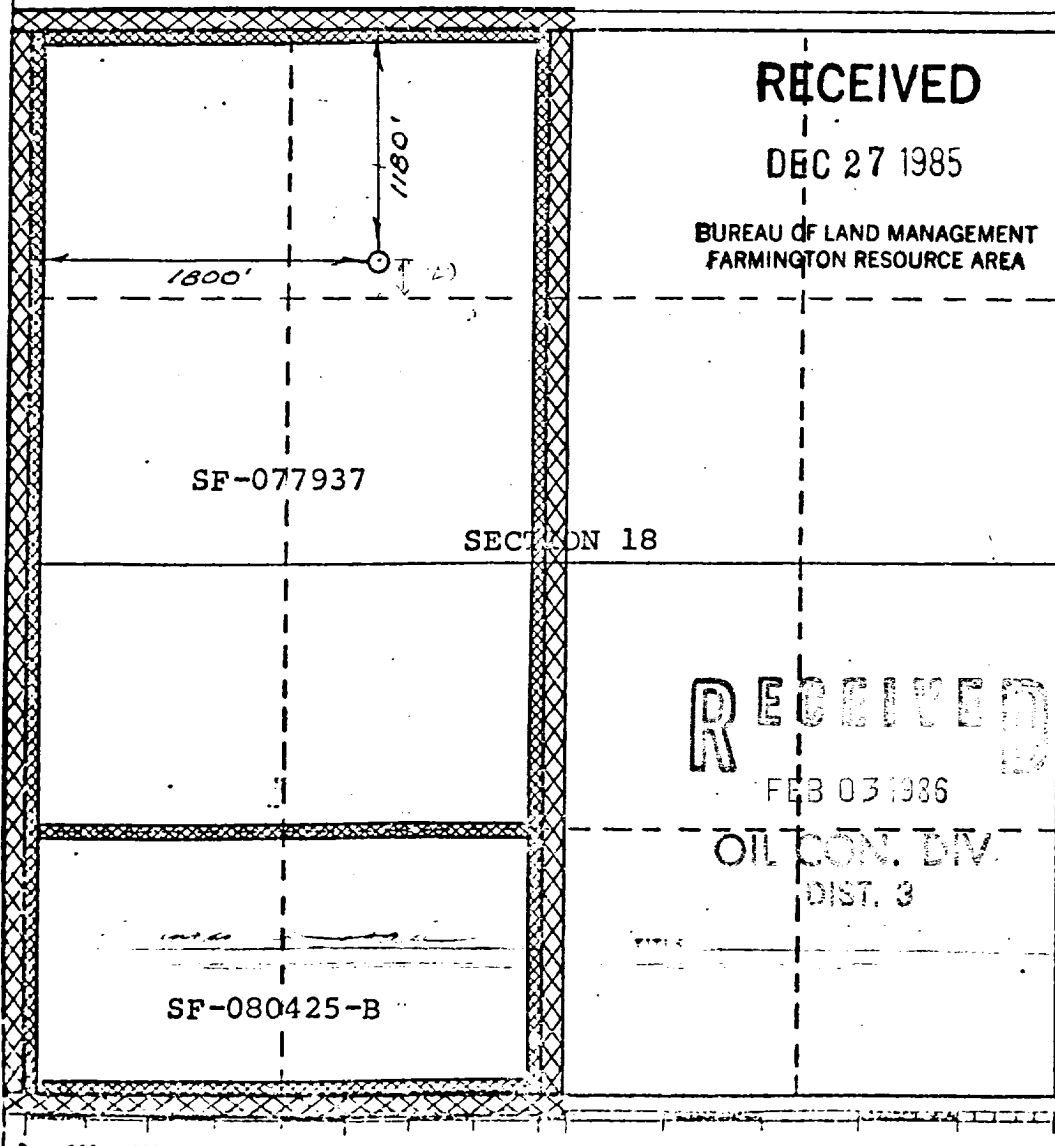
Operator <b>EL PASO NATURAL GAS COMPANY</b>		Lease <b>HUERFANO UNIT (SF-077937)</b>		Well No. <b>271</b>
Unit Letter <b>C</b>	Section <b>18</b>	Township <b>26-N</b>	Range <b>10-W</b>	County <b>SAN JUAN</b>
Actual Footage Location of Well: <b>1180</b> feet from the <b>NORTH</b> line and <b>1800</b> feet from the <b>WEST</b> line				
Ground Level Elev. <b>6464</b>	Producing Formation <b>DAKOTA</b>	Pool <b>BASIN DAKOTA</b>	Dedicated Acreage: <b>318.36</b> Acres	

1. Outline the acreage dedicated to the subject well by colored pencil or hachure marks on the plat below.
2. If more than one lease is dedicated to the well, outline each and identify the ownership thereof (both as to working interest and royalty).
3. If more than one lease of different ownership is dedicated to the well, have the interests of all owners been consolidated by communitization, unitization, force-pooling, etc?

☒ Yes   ☐ No   If answer is "yes," type of consolidation Unitization

If answer is "no," list the owners and tract descriptions which have actually been consolidated. (Use reverse side of this form if necessary.) \_\_\_\_\_

No allowable will be assigned to the well until all interests have been consolidated (by communitization, unitization, forced-pooling, or otherwise) or until a non-standard unit, eliminating such interests, has been approved by the Commission.



**CERTIFICATION**

I hereby certify that the information contained herein is true and complete to the best of my knowledge and belief.

Name Bryan L. Cook  
Position Unitization Clerk  
Company El Paso Nat. Gas  
Date 12-17-85

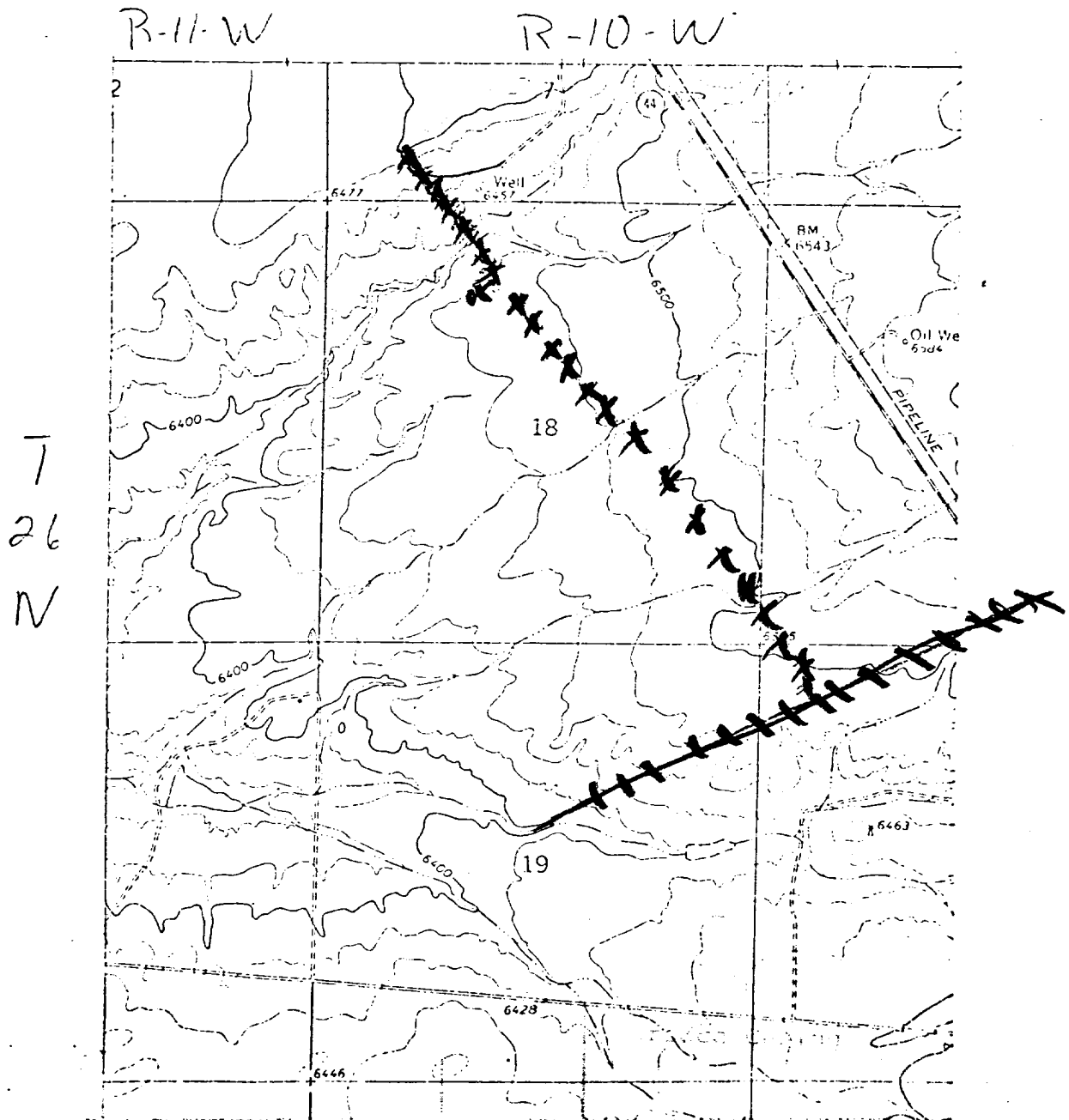
I hereby certify that the well location shown on this plat was plotted from field notes of actual surveys made by me or under my supervision, and that the same is true and correct to the best of my knowledge and belief.

Date Surveyed  
**MAY 10, 1974**

Registered Professional Engineer and/or Land Surveyor

Paul W. Wilson  
Certificate No. **1760**

Huerfano Unit No 271  
NE NW Sec 18, T 26-N, R-10-W



LEGEND OF RIGHT-OF-WAYS

- |                          |           |
|--------------------------|-----------|
| EXISTING ROADS           | — — — — — |
| EXISTING PIPELINES       | - - - - - |
| EXISTING ROAD & PIPELINE | - - - - - |
| PROPOSED ROADS           | — — — — — |
| PROPOSED PIPELINES       | + + + + + |
| PROPOSED ROAD & PIPELINE | + + + + + |