

UNITED STATES  
DEPARTMENT OF THE INTERIOR  
BUREAU OF LAND MANAGEMENT

APPLICATION FOR PERMIT TO DRILL, DEEPEN, OR PLUG BACK

1a. TYPE OF WORK

DRILL ☒

DEEPEN ☐

PLUG BACK ☐

b. TYPE OF WELL

OIL WELL ☒

GAS WELL ☐

OTHER

SINGLE ZONE ☒

MULTIPLE ZONE ☐

2. NAME OF OPERATOR

Merrion Oil & Gas Corporation

3. ADDRESS OF OPERATOR

P. O. Box 1017, Farmington, New Mexico 87499

4. LOCATION OF WELL (Report location clearly and in accordance with any State requirements.)\*

At surface

1650' FSL and 1650' FWL

At proposed prod. zone

Same

14. DISTANCE IN MILES AND DIRECTION FROM NEAREST TOWN OR POST OFFICE\*

18 miles South of Farmington

10. DISTANCE FROM PROPOSED\*

LOCATION TO NEAREST  
PROPERTY OR LEASE LINE, FT.  
(Also to nearest drlg. unit line, if any)

990'

957.92

18. DISTANCE FROM PROPOSED LOCATION\*  
TO NEAREST WELL, DRILLING, COMPLETED,  
OR APPLIED FOR, ON THIS LEASE, FT.

2250'

19. PROPOSED DEPTH

5270

21. ELEVATIONS (Show whether DF, RT, GR, etc.)

6080' GL

23.

PROPOSED CASING AND CEMENTING PROGRAM

SIZE OF HOLE	SIZE OF CASING	WEIGHT PER FOOT	SETTING DEPTH	
12-1/4"	8-5/8"	24 #/ft, J-55	200	175 sx
7-7/8"	4-1/2"	10.5 #/ft, J-55	5270	925 sx

Will drill 12-1/4" surface hole to 200 ft. and set 200 ft. 8-5/8", 24 #/ft, J-55 grade casing with 175 sx Class B cement with 3% CaCl<sub>2</sub>. Will drill 7-7/8" hole to 5270 ft. Will run open hole logs. No other testing planned. If well appears productive, will run 5270 ft. of 4-1/2", 10.5 #/ft, J-55 grade casing and stage cement. First stage will cement with 225 sx Class H 2% gel (1.22 cu. ft/sk. yield) 275 cu. ft. cement to cover Gallup interval from TD. Estimated top of cement is 4400 ft. Will set stage collar at 4200 ft. below Point Lookout Formation. Second stage will cement with 200 sx Class B 2% D-79 (2.06 cu. ft/sk. yield) 1442 cu. ft. cement. Followed by 100 sx Class H 2% gel (1.22 cu. ft/sk. yield) 122 cu. ft. cement to cover Mesaverde, Chacra, Pictured Cliffs, Fruitland and Ojo Alamo.

Estimated top of cement is surface.

Drilling circulating medium will be low solids, non-dispersed, low water loss mud using bentonite, starch, CMC, and fresh water.

Minimum specifications for pressure control is 10", 900 series double ram blow out preventer. Will perforate and stimulate as required for completion.

IN ABOVE SPACE DESCRIBE PROPOSED PROGRAM: If proposal is to deepen or plug back, give data on present productive zone and proposed new productive zone. If proposal is to drill or deepen directionally, give pertinent data on subsurface locations and measured and true vertical depths. Give blowout preventer program, if any.

24.

SIGNED

TITLE

Operator Manager

DATE

2/1/85

(This space for Federal or State office use)

PERMIT NO.

APPROVAL DATE

FEB 20 1986

APPROVED BY

TITLE

OIL CON. DIV.

DATE

FEB 18 1986

CONDITIONS OF APPROVAL, IF ANY:

DIST. 3

(SGD.) MAT MILLENBACH

M. MILLENBACH  
AREA MANAGER

NMOCC

\*See Instructions On Reverse Side

Title 18 U.S.C. Section 1001, makes it a crime for any person knowingly and willfully to make to any department or agency of the United States any false, fictitious or fraudulent statements or representations as to any matter within its jurisdiction.

All distances must be from the outer boundaries of the Section.

Operator <b>MERRION OIL &amp; GAS CORPORATION</b>			Lease <b>HICKMAN "A"</b>		Well No. <b>1R</b>
Unit Letter <b>K</b>	Section <b>10</b>	Township <b>26N</b>	Range <b>12W</b>	County <b>San Juan</b>	
Actual Footage Location of Well: <b>1650</b> feet from the <b>South</b> line and <b>1650</b> feet from the <b>West</b> line					
Ground Level Elev: <b>6080</b>	Producing Formation <b>Gallup</b>		Pool <b>Gallegos Gallup</b>		Dedicated Acreage: <b>80</b> Acres

1. Outline the acreage dedicated to the subject well by colored pencil or hachure marks on the plat below.
2. If more than one lease is dedicated to the well, outline each and identify the ownership thereof (both as to working interest and royalty).
3. If more than one lease of different ownership is dedicated to the well, have the interests of all owners been consolidated by communitization, unitization, force-pooling, etc?

☐ Yes ☐ No If answer is "yes," type of consolidation \_\_\_\_\_

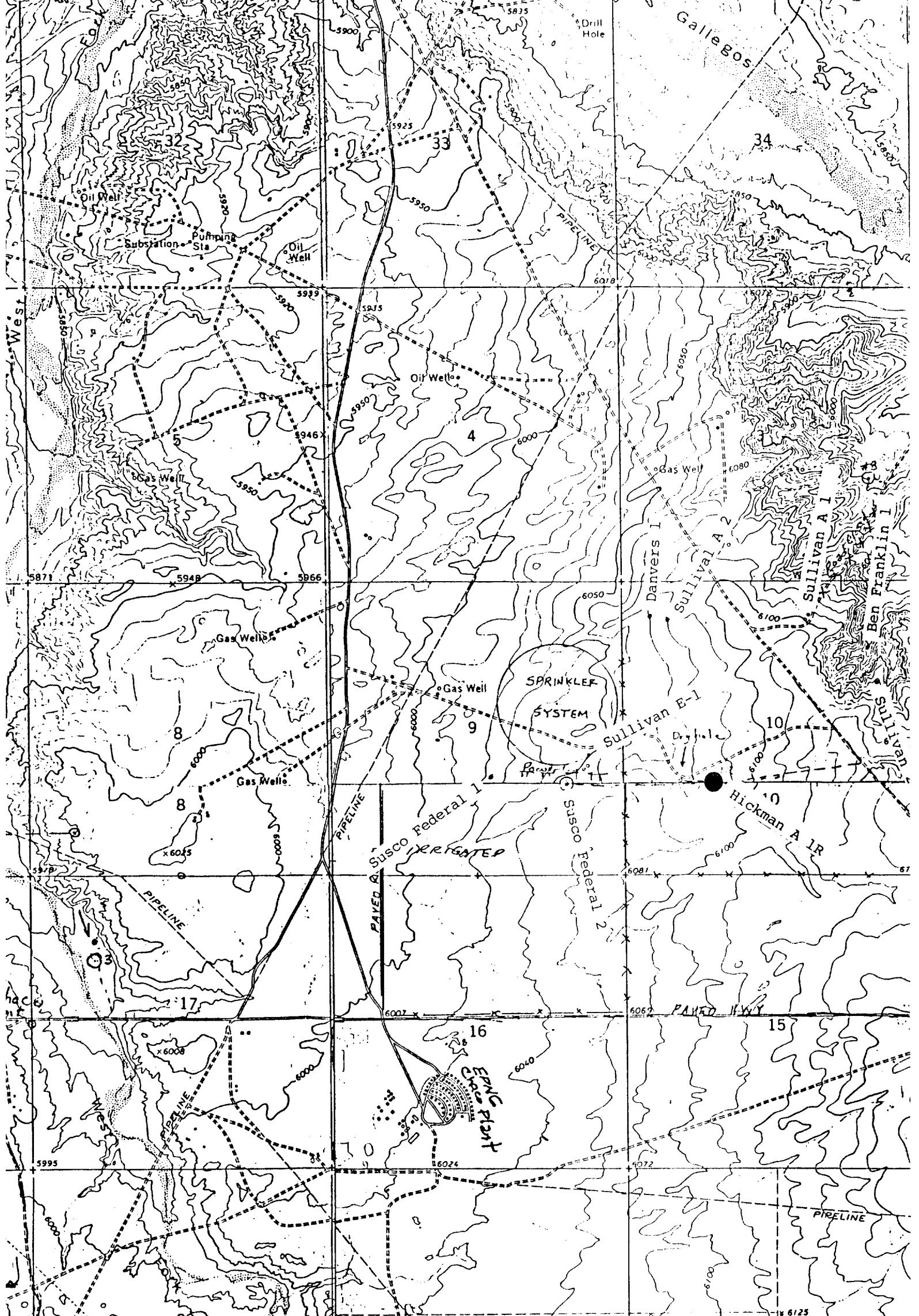
If answer is "no," list the owners and tract descriptions which have actually been consolidated. (Use reverse side of this form if necessary.) \_\_\_\_\_

No allowable will be assigned to the well until all interests have been consolidated (by communitization, unitization, forced-pooling, or otherwise) or until a non-standard unit, eliminating such interests, has been approved by the Commission.

		<p align="center"><b>RECEIVED</b></p> <p align="center">FEB 25 1985</p> <p align="center">BUREAU OF LAND MANAGEMENT FARMINGTON RESOURCE AREA</p>	
		<p align="center">Sec. 10</p>	
<p align="center">1650'</p>		<p align="center">FEB 20 1986</p> <p align="center"><b>OIL CON. DIV.</b></p> <p align="center"><b>DIST. 3</b></p>	

Scale: 1"=1000'

<p align="center"><b>CERTIFICATION</b></p> <p>I hereby certify that the information contained herein is true and complete to the best of my knowledge and belief.</p> <p align="right"><i>Steve S. Dunn</i></p>	
Name	Steve S. Dunn
Position	Operations Manager
Company	Merrion Oil & Gas Corporation
Date	2/1/85
<p>I hereby certify that the well location shown on this plat was plotted from field notes of actual surveys made by me or under my supervision, and that the same is true and correct to the best of my knowledge and belief.</p>	
Date Surveyed	January 29, 1985
Registered Professional Engineer and Land Surveyor	Fred B. Kerr
Certificate No.	3058



Vicinity Map for  
MERRION OIL & GAS CORPORATION #1R HICKMAN "A"  
1650' FSL 1650' FWL Sec. 10-T26N-R12W  
SAN JUAN COUNTY, NEW MEXICO