

UNITED STATES  
DEPARTMENT OF THE INTERIOR  
BUREAU OF LAND MANAGEMENT

APPLICATION FOR PERMIT TO DRILL, DEEPEN, OR PLUG BACK

1a. TYPE OF WORK

DRILL ☒

DEEPEN ☐

PLUG BACK ☐

b. TYPE OF WELL

OIL  
WELL ☐

GAS  
WELL ☒

OTHER

SINGLE  
ZONE ☒

MULTIPLE  
ZONE ☐

2. NAME OF OPERATOR

Romo Corporation

3. ADDRESS OF OPERATOR

P. O. box 1785, Farmington, NM 87499

4. LOCATION OF WELL (Report location clearly and in accordance with any State requirements.)

At surface

1620 FNL; 1470 FEL

At proposed prod. zone Same as above

14. DISTANCE IN MILES AND DIRECTION FROM NEAREST TOWN OR POST OFFICE

18 miles south of Blanco, New Mexico

BUREAU OF LAND MANAGEMENT  
FARMINGTON RESOURCE AREA

15. DISTANCE FROM PROPOSED\*

LOCATION TO NEAREST  
PROPERTY OR LEASE LINE, FT.

(Also to nearest drlg. unit line, if any)

1132 ft.

16. NO. OF ACRES IN LEASE

2480.36

17. NO. OF ACRES ASSIGNED  
TO THIS WELL

155.50 / 60

18. DISTANCE FROM PROPOSED LOCATION\*

TO NEAREST WELL, DRILLING, COMPLETED,  
OR APPLIED FOR, ON THIS LEASE, FT.

644 ft.

19. PROPOSED DEPTH

2045 ft.

20. ROTARY OR CABLE TOOLS

Rotary

21. ELEVATIONS (Show whether DE, RT, GR, etc.)

6234 GR

DRILLING OPERATIONS AUTHORIZED ARE

SUBJECT TO COMPLIANCE WITH ATTACHED

22. APPROX. DATE WORK WILL START\*

6-15-86

23. "GENERAL REQUIREMENTS" PROPOSED CASING AND CEMENTING PROGRAM

SIZE OF HOLE	SIZE OF CASING	WEIGHT PER FOOT	SETTING DEPTH
9 7/8" 12 1/4"	8 5/8" H-40J-55	24.0#	± 200 ft. 150
6 3/4"	4 1/2" J-55	9.5#	± 2045 ft.

See attached change

This action is subject to technical and  
procedural review pursuant to 43 CFR 3165.3  
and appeal pursuant to 43 CFR 3165.4.

790 cu. ft. cl. "B" w/2% cacl<sub>2</sub>  
280 cu. ft. 65-35 Poz w/12% gel,  
65 lb. of Flocele & 2% CaCl<sub>2</sub>  
followed by 90 cu. ft. of cl. "B"  
w/2% CaCl<sub>2</sub>, 2% gel, 17 lb. flocele

We propose to drill this well with mud to about 2045 ft. and run 4 1/2" casing and cement. The well will be perforated and frac'd in the Pictured Cliffs formation. We will then run about 1950 ft. of 1 1/4" tubing.

We also propose to lay 1098 ft. of pipeline to connect the well to an existing pipeline. Attached is a plat showing the proposed pipeline and access road. The pipeline will not cross a lease line. It will be installed according to the API pipeline code and it will be coated, wrapped, and hydrostatically tested to 1000 P.S.I.G.

The gas has previously been dedicated to a transporter.

IN ABOVE SPACE DESCRIBE PROPOSED PROGRAM: If proposal is to deepen or plug back, give data on present productive zone and proposed new productive zone. If proposal is to drill or deepen directionally, give pertinent data on subsurface locations and measured and true vertical depths. Give blowout preventer program, if any.

24.

SIGNED

Kenneth E. Kelly

TITLE President

DATE May 1, 1986

(This space for Federal or State office use)

PERMIT NO.

APPROVAL DATE

RECEIVED  
JUL 29 1986

APPROVED  
AMENDED

APPROVED BY

TITLE

CONDITIONS OF APPROVAL, IF ANY:

OIL CON. DIV.  
DIST. 3

NMOCC

\*See Instructions On Reverse Side

AREA MANAGER

Item C-102  
Supersedes C-  
Effective 1-1-6

9672

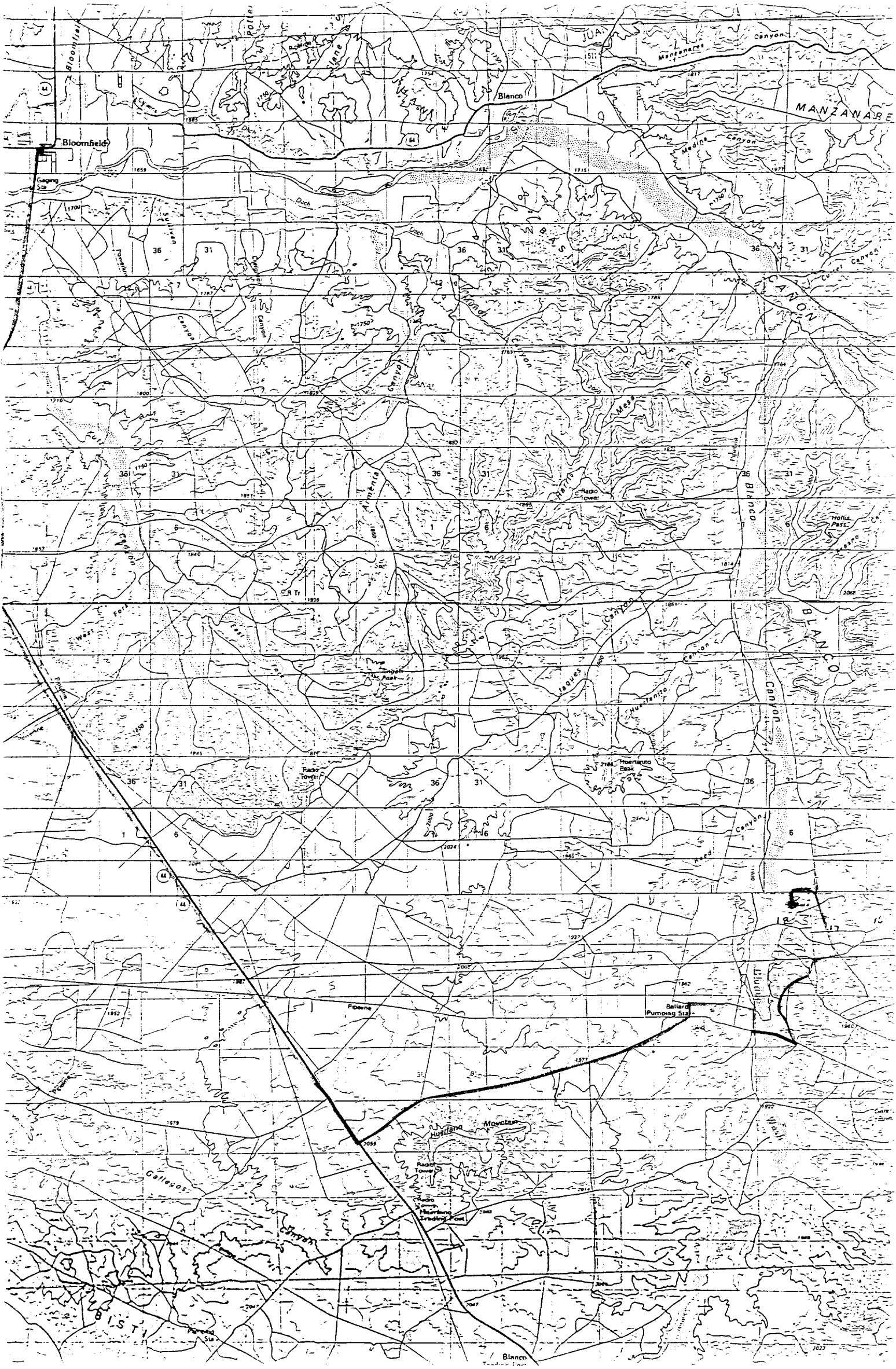


Exhibit "C"



ROMO CORPORATION  
NEWSOM NO. 4-R  
Sec. 18, T26N-R8W  
San Juan County, New Mexico

1. Change Well Name:

From: Newsom, No. 4-J  
To: Newsom, No. 4-R

2. Change Surface Casing to:

Hole - 12 $\frac{1}{4}$ "  
Casing - 8-5/8", J-55, 24.0 lb.  
Depth - 150 ft.  
Cement - 180 Ft<sup>3</sup>, Class "B" w/20% CaCl

3. Change direction of well pad layout, as per BLM Archaeologist request. See Exhibit "A".

4. Change configuration of Reserve Pit, as per BLM Archaeologist request. See Exhibit "B"  
Edge of reserve pit back to be no more than 100' from well bore.