

UNITED STATES
DEPARTMENT OF THE INTERIOR
BUREAU OF LAND MANAGEMENT

APPLICATION FOR PERMIT TO DRILL, DEEPEN, OR PLUG BACK

1a. TYPE OF WORK

DRILL ☒

DEEPEN ☐

PLUG BACK ☐

b. TYPE OF WELL

OIL
WELL ☒

GAS
WELL ☐

OTHER

SINGLE
ZONE ☒

MULTIPLE
ZONE ☐

2. NAME OF OPERATOR

Merrion Oil and Gas Corporation

3. ADDRESS OF OPERATOR

P. O. Box 840, Farmington, New Mexico 87499

4. LOCATION OF WELL (Report location clearly and in accordance with any State requirements.)
At surface

At proposed prod. zone
Same

14. DISTANCE IN MILES AND DIRECTION FROM NEAREST TOWN OR POST OFFICE*

18 miles South of Farmington

15. DISTANCE FROM PROPOSED*

LOCATION TO NEAREST
PROPERTY OR LEASE LINE, FT.
(Also to nearest drlg. unit line, if any)

990'

16. NO. OF ACRES IN LEASE

957.92

17. NO. OF ACRES ASSIGNED
TO THIS WELL

N 80

18. DISTANCE FROM PROPOSED LOCATION*
TO NEAREST WELL, DRILLING, COMPLETED,
OR APPLIED FOR, ON THIS LEASE, FT.

2250'

19. PROPOSED DEPTH

5270'

20. ROTARY OR CABLE TOOLS

0 - TD

21. ELEVATIONS (Show whether DF, RT, GR, etc.)

This action is subject to technical and
procedural review pursuant to 43 CFR 3165.3
and appeal pursuant to 43 CFR 3165.4.

6080' GL

22. APPROX. DATE WORK WILL START*

May 15, 1987

PROPOSED CASING AND CEMENTING PROGRAM

DRILLING OPERATIONS AUTHORIZED ARE
SUBJECT TO COMPLIANCE WITH ATTACHED
"GENERAL REQUIREMENTS"

SIZE OF HOLE	SIZE OF CASING	WEIGHT PER FOOT	SETTING DEPTH	QUANTITY OF CEMENT
12-1/4"	8-5/8"	24.0 #/ft, J-55	187' 200'	175 sx
7-7/8"	4-1/2"	10.5 #/ft, J-55	5270'	925 sx

Will drill 12-1/4" surface hole to 200 ft. and set approximately 187 ft.
8-5/8", 24 #/ft, J-55 grade casing with 175 sx Class B cement with 3% CaCl2.
Will drill 7-7/8" hole to 5270 ft. Will run open hole logs. No other testing
planned. If well appears productive, will run 5270 ft. of 4-1/2", 10.5 #/ft,
J-55 grade casing and stage cement. First stage will cement with 225 sx Class
H 2% gel (1.22 cu.ft./sk. yield) 275 cu.ft. cement to cover Gallup interval from
TD. Estimated top of cement is 4400 ft. Will set stage collar at 4200 ft.
below Point Lookout Formation. Second stage will cement with 600 sx Class B 2%
D-79 (2.06 cu.ft./sk. yield) 1236 cu. ft. cement; followed by 100 sx Class H 2%
gel (1.22 cu.ft./sk. yield) 122 cu. ft. cement to cover Mesaverde, Chacra,
Pictured Cliffs, Fruitland, and Ojo Alamo. Estimated top of cement is surface.
Drilling circulating medium, will be low solids, non-dispersed, low water loss
mud using bentonite, starch, CMC, and fresh water. Minimum specifications for
pressure control is 10", 900 series double ram blow out preventer. Will
perforate and stimulate as required for completion.

IN ABOVE SPACE DESCRIBE PROPOSED PROGRAM: If proposal is to deepen or plug back, give data on present productive zone and proposed new productive
zone. If proposal is to drill or deepen directionally, give pertinent data on subsurface locations and measured and true vertical depths. Give blowout
preventer program, if any.

24.

SIGNED

TITLE Operations Manager

DATE 3/30/87

(This space for Federal or State office use)

PERMIT NO.

APPROVAL DATE

DATE APR 09 1987

"Approval of this action does
not warrant that the applicant
holds legal or equitable
or title to this lease."

TITLE

NMOCC

*See Instructions On Reverse Side

/s/ J. Stan McKee

AREA MANAGER

Title 18 U.S.C. Section 1001, makes it a crime for any person knowingly and willfully to make to any department or agency of the
United States any false, fictitious or fraudulent statements or representations as to any matter within its jurisdiction.

All distances must be from the corner boundaries of the Section.

Operator MERRION OIL & GAS CORPORATION			Lease HICKMAN 11A		Well No. 1R
Unit Letter K	Section 10	Township 26N	Range 12W	County San Juan	
Actual Footage Location of Well:					
1650		feet from the South	line and 1650	feet from the West	line
Ground Level Elev: 6080	Producing Formation Gallup		Pool Gallegos Gallup		Dedicated Acreage: 80 Acres

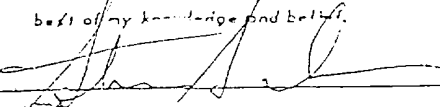
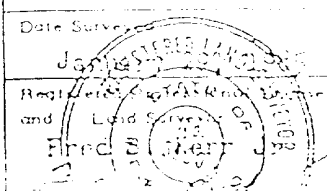
1. Outline the acreage dedicated to the subject well by colored pencil or hatchure marks on the plat below.
2. If more than one lease is dedicated to the well, outline each and identify the ownership thereof (both as to working interest and royalty).
3. If more than one lease of different ownership is dedicated to the well, have the interests of all owners been consolidated by communitization, unitization, force-pooling, etc?

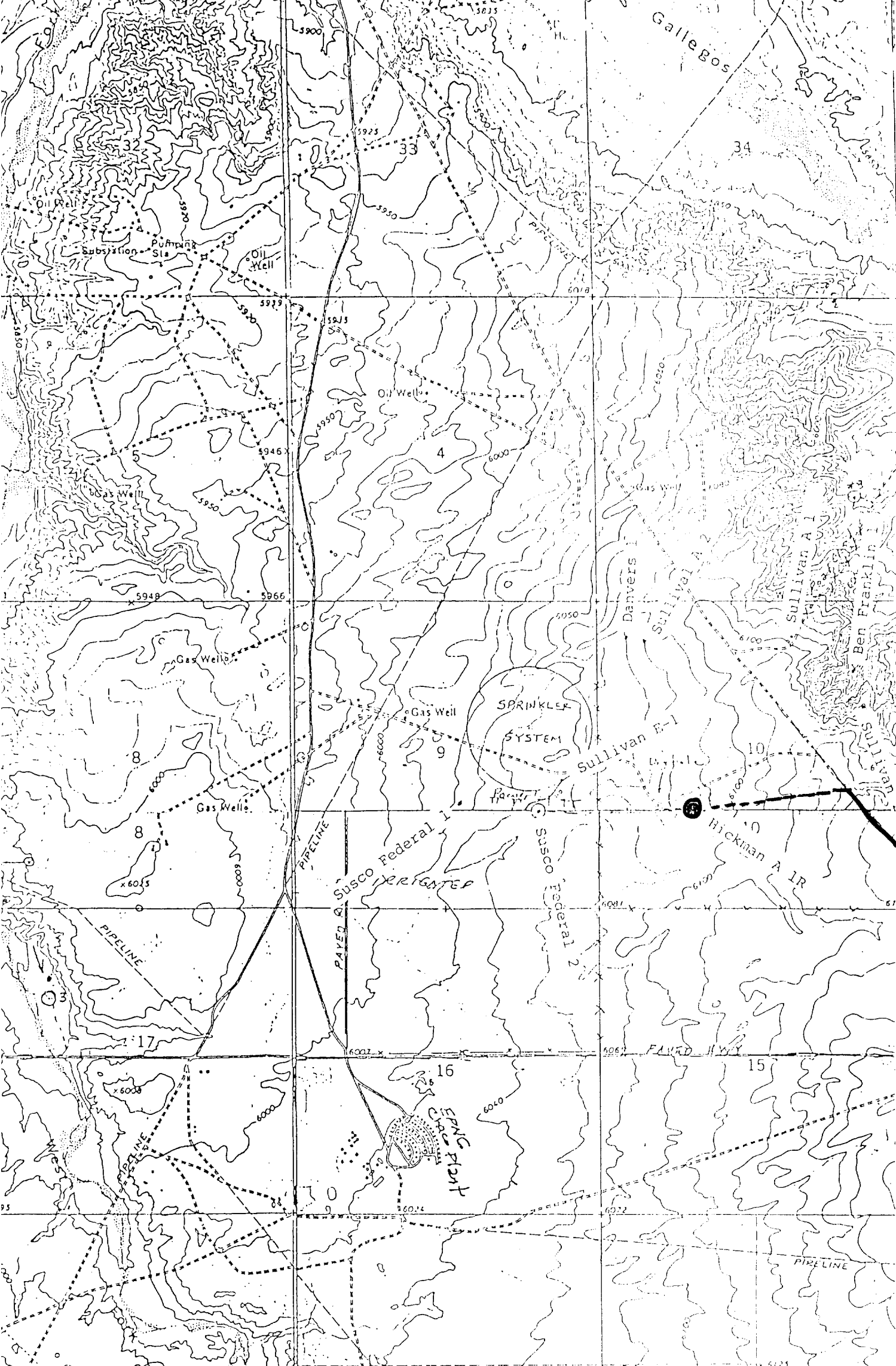
☐ Yes ☐ No If answer is "yes," type of consolidation _____

If answer is "no," list the owners and tract descriptions which have actually been consolidated. (Use reverse side of this form if necessary.) _____

No allowable will be assigned to the well until all interests have been consolidated (by communitization, unitization, forced-pooling, or otherwise) or until a non-standard unit, eliminating such interests, has been approved by the Commission.

<div style="text-align: center;"> RECEIVED APR 01 1987 BUREAU OF LAND MANAGEMENT FARMINGTON RESOURCE AREA </div>		Sec.	
		10	
1650'		1050'	
SF 080384B			

CERTIFICATION I hereby certify that the information contained herein is true and complete to the best of my knowledge and belief.  Steve S. Dunn Position Operations Manager Company Merrion Oil & Gas Corporation Date 2/25/86	
I hereby certify that the well location shown on this plat was plotted from field notes of actual surveys made by me or under my supervision, and that the same is true and correct to the best of my knowledge and belief. Date Surveyed  Fred S. Merr	



Vicinity Map for
MERRION OIL & GAS CORPORATION #1R HICKMAN "A"
1650' FSL 1650' FWL Sec. 10-T26N-R12W
SAN JUAN COUNTY, NEW MEXICO

- - - Planned access road
- Existing road