

UNITED STATES  
DEPARTMENT OF THE INTERIOR  
BUREAU OF LAND MANAGEMENT

APPLICATION FOR PERMIT TO DRILL, DEEPEN, OR PLUG BACK

1a. TYPE OF WORK

DRILL ☒

DEEPEN ☐

PLUG BACK ☐

b. TYPE OF WELL

OIL  
WELL ☐

GAS  
WELL ☒

OTHER

SINGLE  
ZONE ☐

MULTIPLE  
ZONE ☒

2. NAME OF OPERATOR

Union Texas Petroleum

3. ADDRESS OF OPERATOR

375 U.S. Highway 64, Farmington New Mexico 87401

4. LOCATION OF WELL (Report location clearly and in accordance with any State requirements.)

At surface 1812' FNL & 1020' FWL

At proposed prod. zone 2280' 1180'

Same as above

14. DISTANCE IN MILES AND DIRECTION FROM NEAREST TOWN OR POST OFFICE

20 miles southeast of Bloomfield, New Mexico

10. DISTANCE FROM PROPOSED LOCATION TO NEAREST PROPERTY OR LEASE LINE, FT. (Also to nearest drilg. unit line, if any.)

1020' from lease

801' from DU

18. DISTANCE FROM PROPOSED LOCATION TO NEAREST WELL, DRILLING, COMPLETED, OR APPLIED FOR, ON THIS LEASE, FT.

1099'

16. NO. OF ACRES IN LEASE

562.13

19. PROPOSED DEPTH

6800'

17. NO. OF ACRES ASSIGNED TO THIS WELL

N/2

20. ROTARY OR CABLE TOOLS

Rotary

22. APPROX. DATE WORK WILL START

April 15, 1987

21. ELEVATIONS (Show whether DF, RT, GR, etc.)

DRILLING OPERATIONS AUTHORIZED ARE

SUBJECT TO COMPLIANCE WITH ATTACHED

"GENERAL REQUIREMENTS AND CEMENTING PROGRAM"

This section is subject to review and approval by the Bureau of Land Management, Department of the Interior, and appeal pursuant to 43 CFR 3165.3 and 43 CFR 3165.4.

SIZE OF HOLE	SIZE OF CASING	WEIGHT PER FOOT	SETTING DEPTH	
14-3/4"	10-3/4"	40.5#	300'	290 sxs (342 cu.ft.)
9-7/8"	7-5/8"	26.4#	2425'	330 sxs (778 cu.ft.)
6-3/4"	5-1/2" liner	15.5	2225'-6800'	450 sxs (707 cu.ft.)

Union Texas Petroleum wishes to advise we intend to drill 14-3/4" hole with mud to 300+ and set 10-3/4" 40.5#, H-40, ST&C csg. to 300' +, cementing to surface with 290 sxs (342 cu.ft.) C1 "B" with 2% CaCl2 and 1/4# flocele/sk. Wait on cement for 12 hrs.

Nipple up, test BOP. Drill 9-7/8" hole with mud out of surface to 2425'. Set 7-5/8", 26.4#, K-55, ST&C intermediate csg. to 2425', cementing to surface with 230 sxs (660 cu.ft.) 65-35 POZ with 12% gel and 12-1/4# gilsonite/sk, tailed by 100 sxs (118 cu.ft) C1 "B" with 2% CaCl2.

Drill 6-3/4" hole with natural gas out of intermediate to a TD of 6800'. Log well, run 5-1/2", 15.5#, K-55, ST&C liner from 2225' to 6800'. Cement liner into intermediate csg with 450 sxs (707 cu.ft.) 50-50 POZ with 4% gel, 6-1/4# gilsonite/sk, and 10# salt/sk.

Following perforation and treatment of the Mesaverde and Dakota formations, standard production equipment will be installed. The Mesaverde will be tied into Northwest Pipeline, while the Dakota will be tied into El Paso Natural Gas. A cathodic protection groundbed will be drilled on location. A thermo-electric generator will be installed on location. No outside electric source will be necessary. This site was previously inspected 12/6/84.

IN ABOVE SPACE DESCRIBE PROPOSED PROGRAM. If proposal is to deepen or plug back, give data on present productive zone and proposed new productive zone. If proposal is to drill or deepen directionally, give pertinent data on subsurface locations and measured and true vertical depths. Give blowout preventer program, if any.

21. SIGNED Robert E. Frank TITLE Permit Coordinator

DATE March 12, 1987

(This space for Federal or State office use)

PERMIT NO.

APPROVAL DATE

APPROVED BY  
CONDITIONS OF APPROVAL, IF ANY:

TITLE

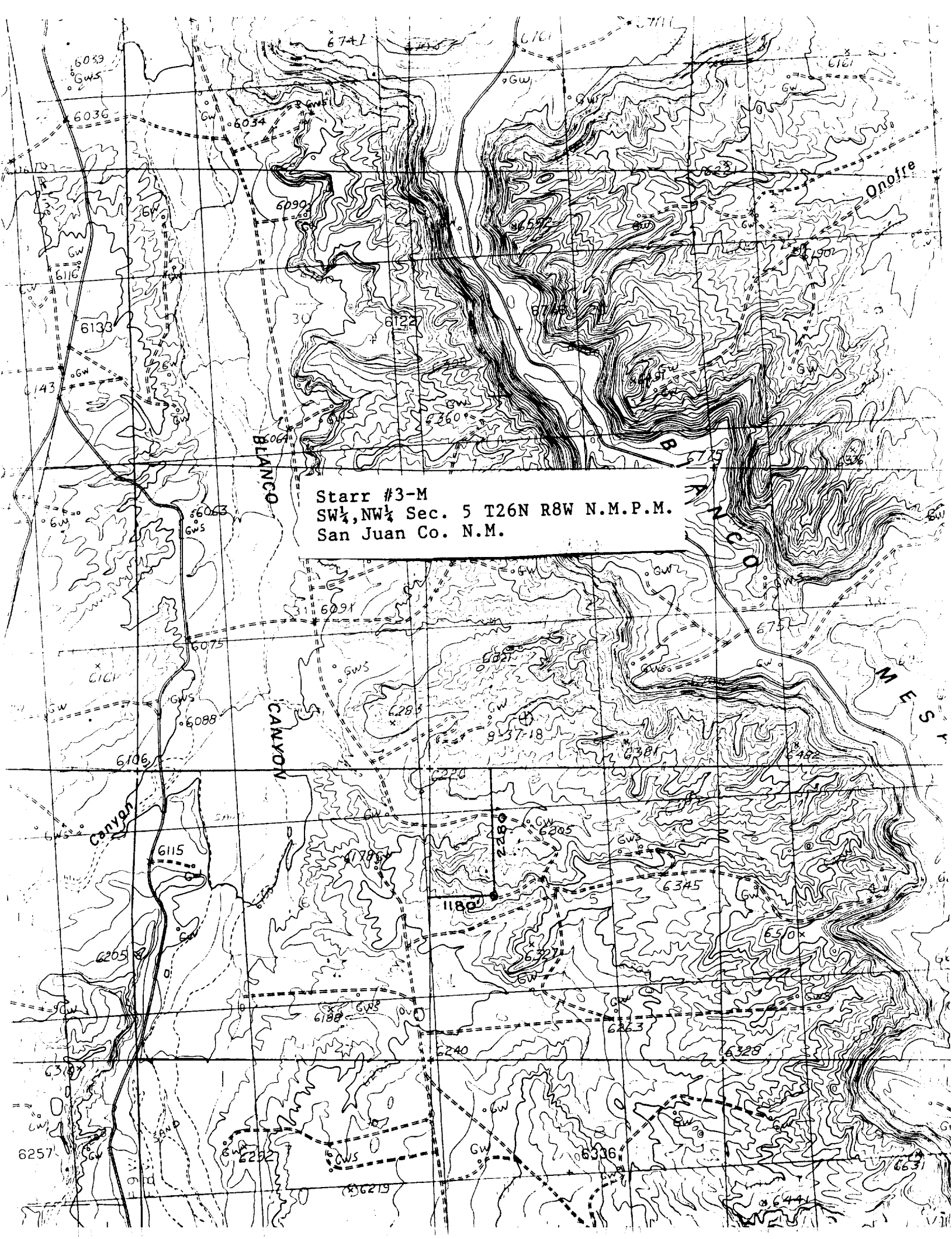
Held C-104 for NSE

NMOC

\*See Instructions On Reverse Side

Form C-101  
 Supersedes C-12  
 Effective 1-4-68

9672



Starr #3-M  
SW $\frac{1}{4}$ , NW $\frac{1}{4}$  Sec. 5 T26N R8W N.M.P.M.  
San Juan Co. N.M.