



STATE OF NEW MEXICO
ENERGY, MINERALS AND NATURAL RESOURCES DEPARTMENT

OIL CONSERVATION DIVISION

2040 S. PACHECO
SANTA FE, NEW MEXICO 87505
(505) 827-7131

August 16, 1995

RECEIVED
AUG 17 1995
OIL CON. DIV.
DIST. 3

Meridian Oil, Inc.
P.O. Box 4289
Farmington, New Mexico 87499-4289

Attention: Peggy Bradfield

Administrative Order NSL-2345-A

Dear Ms. Bradfield:

Reference is made to your application dated June 15, 1995 for a non-standard Basin-Fruitland coal gas well location for your existing **Starr Well No. 3M (API No. 30-045-26783)** which was drilled in 1987 and dually completed in both the Blanco-Mesaverde and Basin-Dakota Pools at an unorthodox gas well location for both intervals (approved by Division Administrative Order NSL-2345, dated May 21, 1987) 2280 feet from the North line and 1180 feet from the West line (Unit E) of Section 5, Township 26 North, Range 8 West, NMPM, San Juan County, New Mexico.

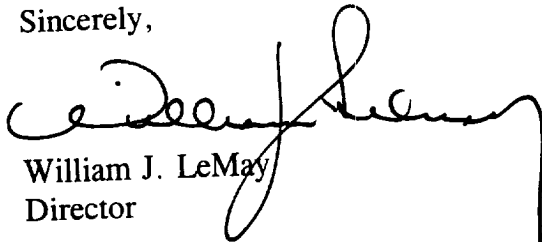
It is our understanding that both the Mesaverde and Dakota intervals will be plugged back and abandoned and said well will be recompleted up-hole as a single Basin-Fruitland Coal (Gas) Pool well, which pursuant to the "*Special Rules and Regulations for the Basin-Fruitland Coal (Gas) Pool*", as promulgated by Division Order No. R-8768, as amended, is also unorthodox. Further, Lots 1 through 4 and the S/2 N/2 (N/2 equivalent) of said Section 5 shall be dedicated to the well to form a standard 321.56-acre gas spacing and proration unit for said pool.

By the authority granted me under the provisions of Rule 8 of said Order No. R-8768, as amended, the above-described unorthodox coal gas well location is hereby approved.

Administrative Order NSL-2345-A
Meridian Oil, Inc.
August 16, 1995
Page 2

At this time the original Administrative Order NSL-2345 shall be placed in abeyance until further notice.

Sincerely,

A handwritten signature in black ink, appearing to read "William J. LeMay". The signature is fluid and cursive, with a long horizontal stroke extending to the right.

William J. LeMay
Director

WJL/MES/kv

cc: Oil Conservation Division - Aztec ✓
U. S. Bureau of Land management - Farmington
File: NSL-2345

Ernie Busch

From: Ernie Busch
To: Mike Stogner
Subject: MERIDIAN STARR #3M (NSL)
Date: Monday, June 26, 1995 7:35AM
Priority: High

STARR #3M
2280' FNL; 1180' FWL
E-05-26N-08W
RECOMMEND: APPROVAL

MERIDIAN OIL

June 15, 1995

Federal Express

Mr. Michael Stogner
New Mexico Oil Conservation Division
2040 South Pacheco Street
Santa Fe, New Mexico 87505

RECEIVED
JUN 16 1995

OIL CON. DIV.
DIST. 3

Re: Starr #3M
2280'FNL, 1180'FWL Section 5, T-26-N, R-8-W, San Juan County, NM
API #30-045-26783
NSL-2345

Dear Mr. Stogner:

This is a request for administrative approval for a non-standard gas well location in the Basin Fruitland Coal pool.

Meridian Oil Inc. has recompleted the Starr #3M in the Basin Fruitland Coal pool. This well was originally drilled and completed as a Basin Dakota-Blanco Mesa Verde dual. Order NSL-2345 was issued for the dual well. The Fruitland Coal is considered off-pattern at this location. To comply with the New Mexico Oil Conservation Division rules, Meridian is submitting the following for your approval of this non-standard location:

1. C-102 plat showing location of the well;
2. Plat showing offset owners/operators;
3. Copy of Well Completion Log for original completion(s).
4. Affidavit of notification of offset owners/operators;

A copy of this application is being submitted to all offset owners/operators by certified mail with a request that they furnish your Santa Fe office with a Waiver of Objection, and return one copy to this office.

Sincerely yours,



Peggy Bradfield
Regulatory/Compliance Representative

WAIVER

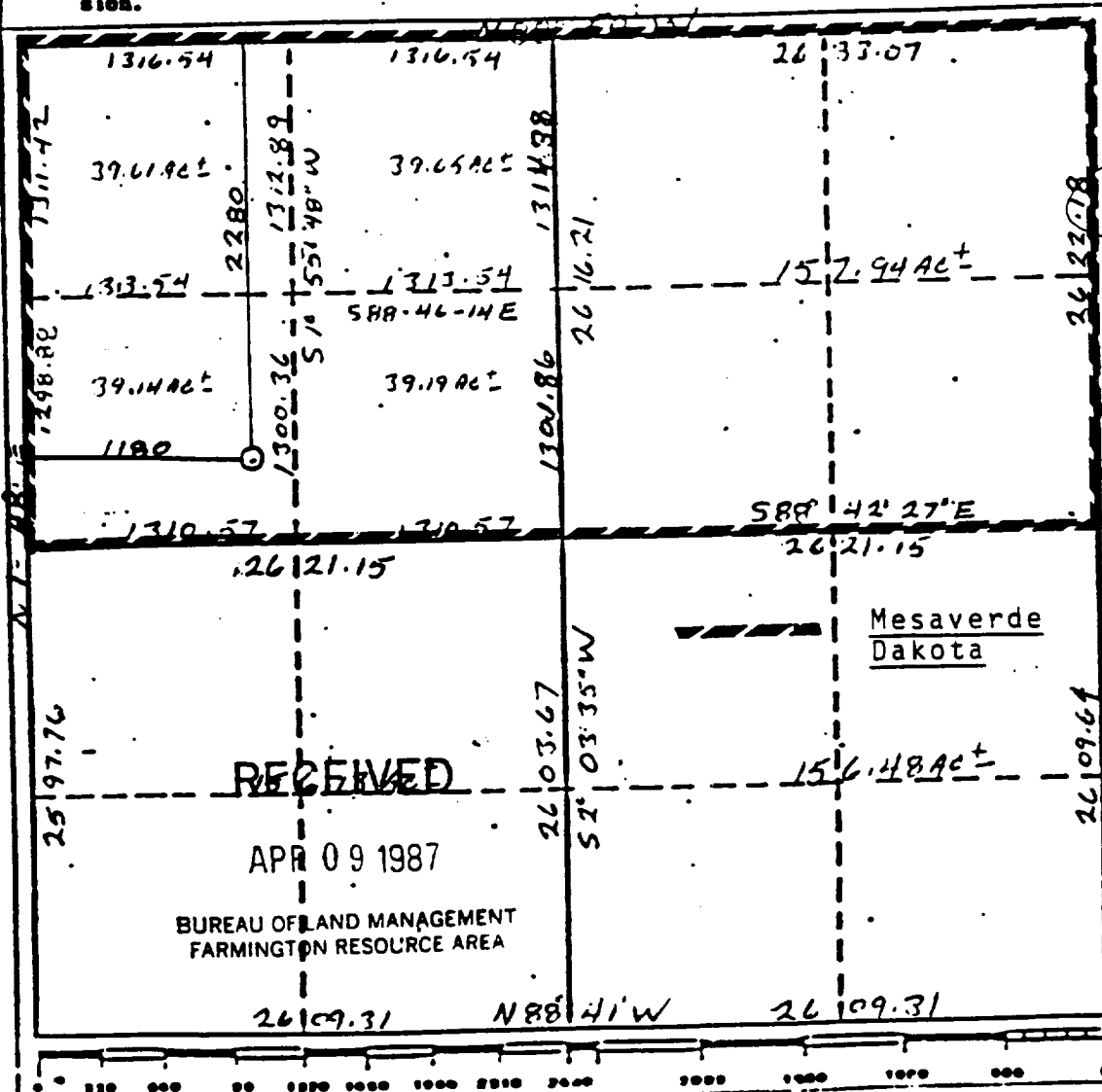
_____ hereby waives objection to Meridian Oil Inc.'s application for non-standard location for the Starr #3M as proposed above.

By: _____ Date: _____

Form C-101
Supersedes
Effective 1

All distances must be from the outer boundaries of the Section.				
Operator Meridian Oil Inc.		Lease Starr		Well No. 3-M
Unit Letter E	Section 5	Township 26N	Range 8W	County San Juan
Actual Façade Location of Well				
2280	feet from the North	line and 1180	feet from the West	line
Ground Level Elev. 6342	Producing Formation Fruitland Coal	Pool Basin	Dedicated Acres N/2 309.65	

- No allowable will be assigned to the well until all interests have been consolidated (by communalization, unitize forced-pooling, or otherwise) or until a non-standard unit, eliminating such interests, has been approved by the Commission.



5: have been in the cell in
shown a plot of a letter from
noted on 3672 was by
under supervision and that the
is correct in the past
knowledge of the matter.

Cecil B. Tullis.

March 26, 1987

Registered Professional Engineer
and/or Land Surveyor

Cecil B. Tullis

Certificate No.

• 9672

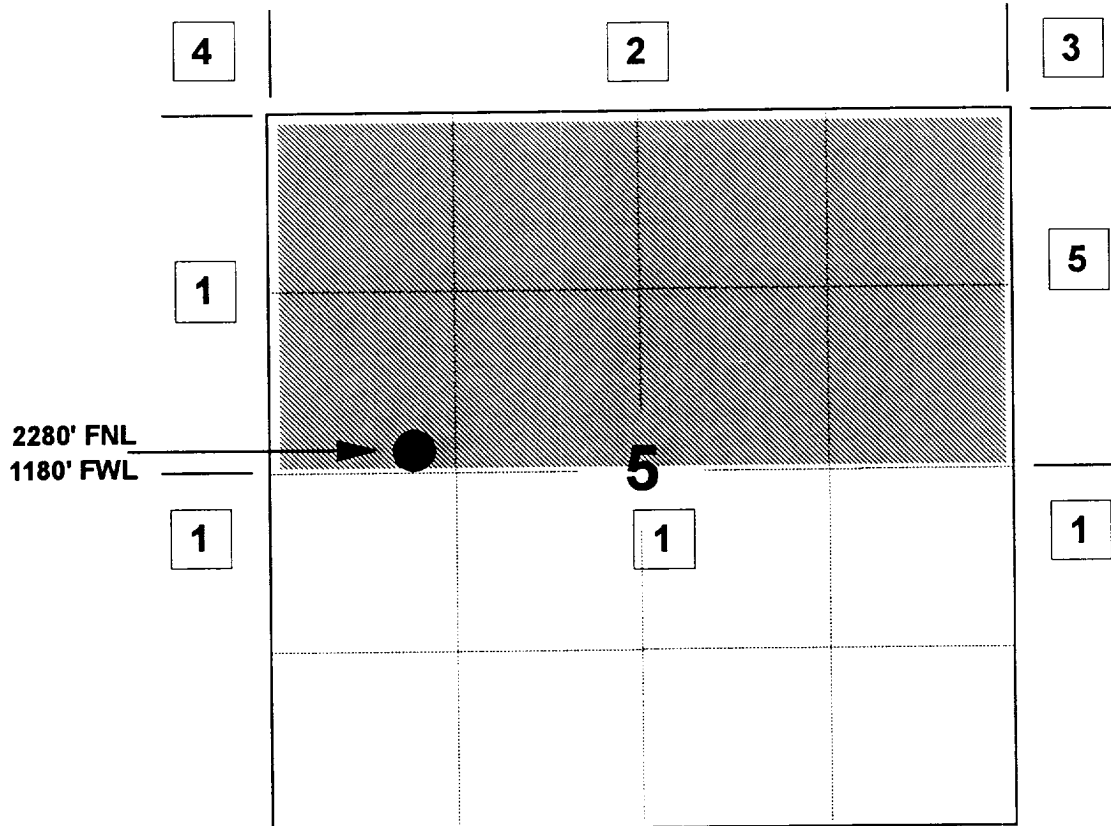
MERIDIAN OIL INC

STARR #3M

OFFSET OPERATOR \ OWNER PLAT

Off Pattern Fruitland Coal Formation Well

Township 26 NorTh, Range 8 West



1) Meridian Oil Inc

2) Meridian Oil Inc &

Amoco Production Company

PO Box 800, Denver, CO 80201

Conoco, Inc.

10 Desta Drive, Suite 100W, Midland, TX 79705-4500

3) Amoco Production Company & Conoco, Inc.

4) Amoco Production Company, Conoco, Inc. &

Roddy Production Company

3001 Northridge Drive, Farmington, NM 87401

5) Meret Partners LP

12222 Merit Drive, Suite 1500, Dallas, TX 75251

John H Hill

16901 Dallas Parkway, Suite 230, Dallas, TX 75248

Esperanza Energy Corp

16901 Dallas Parkway, Suite 230, Dallas, TX 75248

UNITED STATES
DEPARTMENT OF THE INTERIOR
BUREAU OF LAND MANAGEMENT

SUBMIT IN DUPLICATE

(See other instructions on reverse side)

Form approved.
Budget Bureau No. 1004-0137
Expires August 31, 1985

WELL COMPLETION OR RECOMPLETION REPORT AND LOGBOOK

1. TYPE OF WELL: ☐ OIL WELL ☐ GAS WELL ☐ DRY ☐ Other

2. TYPE OF COMPLETION: ☒ NEW WELL ☐ WORK OVER ☐ DEEP-EN ☐ PLUG BACK ☐ DIFF. REVR. ☐ Other

3. NAME OF OPERATOR
Union Texas Petroleum Corporation

4. ADDRESS OF OPERATOR
375 US Highway 64, Farmington, NM 87401

5. LOCATION OF WELL (Report location clearly and in accordance with any State requirements)*
At surface 2280' FNL & 1180' FWL

At top prod. interval reported below

At total depth

2387' FNL & 1395' FWL

14. PERMIT NO.

DATE ISSUED

15. DATE SPUDDED 6/09/87
16. DATE T.D. REACHED 6/22/87
17. DATE COMPL. (Ready to prod.) 8/07/87

18. ELEVATIONS (DF, RKB, ST, OR, ETC.)*
6342 GL/6357 KB

19. ELEV. CASINGHEAD
6343

20. TOTAL DEPTH, MD & TVD 6862 KB
21. PLUG BACK T.D., MD & TVD 6817 KB
22. IF MULTIPLE COMPL., HOW MANY* 2

23. INTERVALS DRILLED BY
ROTARY TOOLS 0-6862
CABLE TOOLS N/A

24. PRODUCING INTERVAL(S), OF THIS COMPLETION—TOP, BOTTOM, NAME (MD AND TVD)*
Dakota 6550-6716 BP at 6735

25. WAS DIRECTIONAL SURVEY MADE

Yes

26. TYPE ELECTRIC AND OTHER LOGS RUN
Induction Log, FDL-CNL

27. WAS WELL CORRED
No

CASING RECORD (Report all strings set in well)

CASING SIZE	WEIGHT, LB./FT.	DEPTH SET (MD)	HOLE SIZE	CEMENTING RECORD	AMOUNT PULLED
10-3/4	45.5	359	14-3/4	See attached	
7-5/8	26.4	2475	9-7/8	See attached	

29. LINER RECORD

SIZE	TOP (MD)	BOTTOM (MD)	SACKS CEMENT*	SCREEN (MD)
5-1/2	2286	6848	See attached	

30. TUBING RECORD

SIZE	DEPTH SET (MD)	PACKER SET (MD)
1.9	6723	5028 KB

31. PERFORATION RECORD (Interval, size and number)
See attached

32. ACID, SHOT, FRACTURE, CEMENT SQUEEZE, ETC.

DEPTH INTERVAL (MD)	AMOUNT AND KIND OF MATERIAL USED
	See attached

33. PRODUCTION

33.*

DATE FIRST PRODUCTION		PRODUCTION METHOD (Flowing, gas lift, pumping—size and type of pump)				WELL STATUS (Producing or shut-in)	
		Flowing				Shut-in	
DATE OF TEST	HOURS TESTED	CHOKED SIZE	PROD'N. FOR TEST PERIOD	OIL—BSL.	GAS—MCF.	WATER—BSL.	GAS-OIL RATIO
8/20/87	3	3/4	→	0	89	0	N/A
FLOW. TUBING PRESS.	CASING PRESSURE	CALCULATED 24-HOUR RATE	OIL—BSL.	GAS—MCF.	WATER—BSL.	OIL GRAVITY-API (CORR.)	
50	Packer	→	TSTM	711	Tr.	N/A	

34. DISPOSITION OF GAS (Sold, used for fuel, vented, etc.)
Vented (to be sold)

TEST WITNESSED BY

Connie Cleveland

35. LIST OF ATTACHMENTS
Cementing, Perforation and Stimulation Records

36. I hereby certify that the foregoing and attached information is complete and correct as determined from all available records

SIGNED

Robert C. Frank

TITLE

Permit Coordinator

DATE

12/01/87

*(See Instructions and Spaces for Additional Data on Reverse Side)

UNITED STATES
DEPARTMENT OF THE INTERIOR
BUREAU OF LAND MANAGEMENT

SUBMIT IN DUPLICATE

Form approved.
Budget Bureau No. 1004-0137
Expires August 31, 1985

WELL COMPLETION OR RECOMPLETION REPORT AND LOG

1a. TYPE OF WELL: OIL WELL ☐ GAS WELL ☐ DRY ☐ Other ☐
b. TYPE OF COMPLETION: NEW WELL ☒ WORK OVER ☐ DEEP-EN ☐ PLUG BACK ☐ DIFF. REVR. ☐ Other ☐

2. NAME OF OPERATOR
Union Texas Petroleum Corporation

3. ADDRESS OF OPERATOR
375 US Highway 64, Farmington, NM 87401

4. LOCATION OF WELL (Report location clearly and in accordance with any State requirements)*
At surface 2280' FNL & 1180' FWL
At top prod. interval reported below
At total depth 2387' FNL & 1395' FWL

14. PERMIT NO. DATE ISSUED

5. LEASE DESIGNATION AND SERIAL NO.
SF-078962

6. IF INDIAN, ALLOTTEE OR TRIBE NAME
N/A

7. UNIT AGREEMENT NAME
N/A

8. FARM OR LEASE NAME
STARR

9. WELL NO.
3M

10. FIELD AND POOL, OR WILDCAT
Blanco Mesaverde

11. SEC., T., R., M., OR BLOCK AND SURVEY OR AREA
Section 5, T26N-R8W

12. COUNTY OR PARISH
San Juan

13. STATE
NM

15. DATE SPUDDED 6/09/87 16. DATE T.D. REACHED 6/22/87 17. DATE COMPL. (Ready to prod.) 8/07/87 18. ELEVATIONS (DF. RKB, RT. GR, ETC.)* 6342 GL/6357 KB 19. ELEV. CASINGHEAD 6343

20. TOTAL DEPTH, MD & TVD 6862 KB 21. PLUG BACK T.D., MD & TVD 6817 KB 22. IF MULTIPLE COMPL. HOW MANY* 2 23. INTERVALS DRILLED BY ROTARY TOOLS 0-6862 CABLE TOOLS N/A

24. PRODUCING INTERVAL(S), OF THIS COMPLETION—TOP, BOTTOM, NAME (MD AND TVD)* Mesaverde 4445-4762 25. WAS DIRECTIONAL SURVEY MADE Yes

26. TYPE ELECTRIC AND OTHER LOGS RUN Induction Log, FDL-CNL 27. WAS WELL CORED No

CASING RECORD (Report all strings set in well)

CASING SIZE	WEIGHT, LB./FT.	DEPTH SET (MD)	HOLE SIZE	CEMENTING RECORD	AMOUNT PULLED
10-3/4	45.5	359	14-3/4	See attached	
7-5/8	26.4	2475	9-7/8	See attached	

LINER RECORD				TUBING RECORD		
SIZE	TOP (MD)	BOTTOM (MD)	SACKS CEMENT*	SCREEN (MD)	SIZE	DEPTH SET (MD)
5-1/2	2286	6848	See attached		1.66	4708

31. PERFORATION RECORD (Interval, size and number)		32. ACID, SHOT, FRACTURE, CEMENT SQUEEZE, ETC.	
See attached		DEPTH INTERVAL (MD)	AMOUNT AND KIND OF MATERIAL USED
			See attached

33. PRODUCTION							
DATE FIRST PRODUCTION		PRODUCTION METHOD (Flowing, gas lift, pumping—size and type of pump)				WELL STATUS (Producing or shut-in)	
		Flowing				Shut-in	
DATE OF TEST	HOURS TESTED	CHOKE SIZE	PROD'N. FOR TEST PERIOD	OIL—BBL.	GAS—MCF.	WATER—BBL.	GAS-OIL RATIO
10/15/87	3	3/4		0	89	0	N/A
FLOW. TUBING PRESS.	CASING PRESSURE	CALCULATED 24-HOUR RATE	OIL—BBL.	GAS—MCF.	WATER—BBL.	OIL GRAVITY-API (CORR.)	
50	502		TSTM	715	Tr.	N/A	

34. DISPOSITION OF GAS (Sold, used for fuel, vented, etc.) Vented (to be sold) TEST WITNESSED BY Connie Clevenger

35. LIST OF ATTACHMENTS Cementing, Perforation and Stimulation Records

36. I hereby certify that the foregoing and attached information is complete and correct as determined from all available records

SIGNED Robert C. Zerk TITLE Permit Coordinator DATE 12/01/87

*(See Instructions and Spaces for Additional Data on Reverse Side)

Title 18 U.S.C. Section 1001, makes it a crime for any person knowingly and willfully to make to any department or agency of the

Re: Starr #3M
2280'FNL, 1180'FWL Section 5, T-26-N, R-8-W, San Juan County, NM
API #30-045-26783
NSL-2345

I hereby certify that the following offset owners/operators have been notified by certified mail of our application for administrative approval for non-standard well location of the above well.

Amoco Production Company
PO Box 800
Denver, CO 80202

Conoco Inc
10 Desta Drive, Suite 100W
Midland, TX 79705-4500

Roddy Production Co.
3001 Northridge Drive
Farmington, NM 87401

Meret Partners LP
12222 Merit Drive, Suite 1500
Dallas, TX 75251

John H. Hill
16901 Dallas Parkway, Suite 230
Dallas, TX 75248

Esperanza Energy Corp
16901 Dallas Parkway, Suite 230
Dallas, TX 75248



Peggy Bradfield
Regulatory/Compliance Administrator