

UNITED STATES
DEPARTMENT OF THE INTERIOR

BUREAU OF LAND MANAGEMENT

APPLICATION FOR PERMIT TO DRILL, DEEPEN, OR PLUG BACK

1a. TYPE OF WORK

DRILL ☒

JAN 23 1988 DEEPEN ☐

PLUG BACK ☐

b. TYPE OF WELL

OIL
WELL ☐

GAS
WELL ☒

OTHER ☐ OIL CON. DIV

SINGLE
ZONE ☒

MULTIPLE
ZONE ☐

2. NAME OF OPERATOR

S.E.R.H., Inc.

3. ADDRESS OF OPERATOR

c/o A. R. Kendrick, Box 516, Aztec, NM 87410 (505) 334-2555

4. LOCATION OF WELL (Report location clearly and in accordance with any State requirements.)*

At surface

660' FNL 435' FEL Sec. 5

At proposed prod. zone

14. DISTANCE IN MILES AND DIRECTION FROM NEAREST TOWN OR POST OFFICE*

20 miles southwest from Shiprock, New Mexico

15. DISTANCE FROM PROPOSED*

LOCATION TO NEAREST
PROPERTY OR LEASE LINE, FT.
(Also to nearest drlg. unit line, if any)

435'

16. NO. OF ACRES IN LEASE

1920

17. NO. OF ACRES ASSIGNED
TO THIS WELL

160

18. DISTANCE FROM PROPOSED LOCATION*

TO NEAREST WELL, DRILLING, COMPLETED,
OR APPLIED FOR, ON THIS LEASE, FT.

2979'

19. PROPOSED DEPTH

6050'

20. ROTARY OR CABLE TOOLS

Rotary

21. ELEVATIONS (Show whether DF, RT, GR, etc.)

5882 Ungraded Ground

22. APPROX. DATE WORK WILL START*

Upon approval

23.

PROPOSED CASING AND CEMENTING PROGRAM

SIZE OF HOLE	SIZE OF CASING	WEIGHT PER FOOT	SETTING DEPTH	QUANTITY OF CEMENT
13 3/8"	9 5/8"	36# New	600'	550 sx 2% CaCl (649 CuFt) Circulate
7 7/8"	4 1/2"	10.5# K New	6050'	1st stage: 250 sx (315 CuFt) *
			w/stage collar	2nd stage: 300 sx (378 CuFt) *

* Actual volumes to be based on caliper.

AMENDED

Propose to set 9 5/8" surface casing into the Morrison formation and cement back to surface. WOC 15 hours. Install BOP's and bleed-off manifold. Pressure test to 800 psi. for 30 minutes. Drill out with low solids fresh-water based mud to TD. DST Barker Creek zone if shows warrant. Run IES & GR/DN logs. Run 4 1/2" casing. Cement in two stages w/DV tool below Organ Rock.

The gas is dedicated.

IN ABOVE SPACE DESCRIBE PROPOSED PROGRAM: If proposal is to deepen or plug back, give data on present productive zone and proposed new productive zone. If proposal is to drill or deepen directionally, give pertinent data on subsurface locations and measured and true vertical depths. Give blowout preventer program, if any.

24.

SIGNED

AR Kendrick

TITLE

Agent

DATE

October 3, 1988

(This space for Federal or State office use)

PERMIT NO.

APPROVAL DATE

APPROVED BY

TITLE

DATE

CONDITIONS OF APPROVAL, IF ANY:

NSL-2606

NNOC

*See Instructions On Reverse Side

**NEW MEXICO OIL CONSERVATION COMMISSION
WELL LOCATION AND ACREAGE DEDICATION PLAT**

Form C-102
Supersedes C-128
Effective 1-1-85

All distances must be from the outer boundaries of the Section.

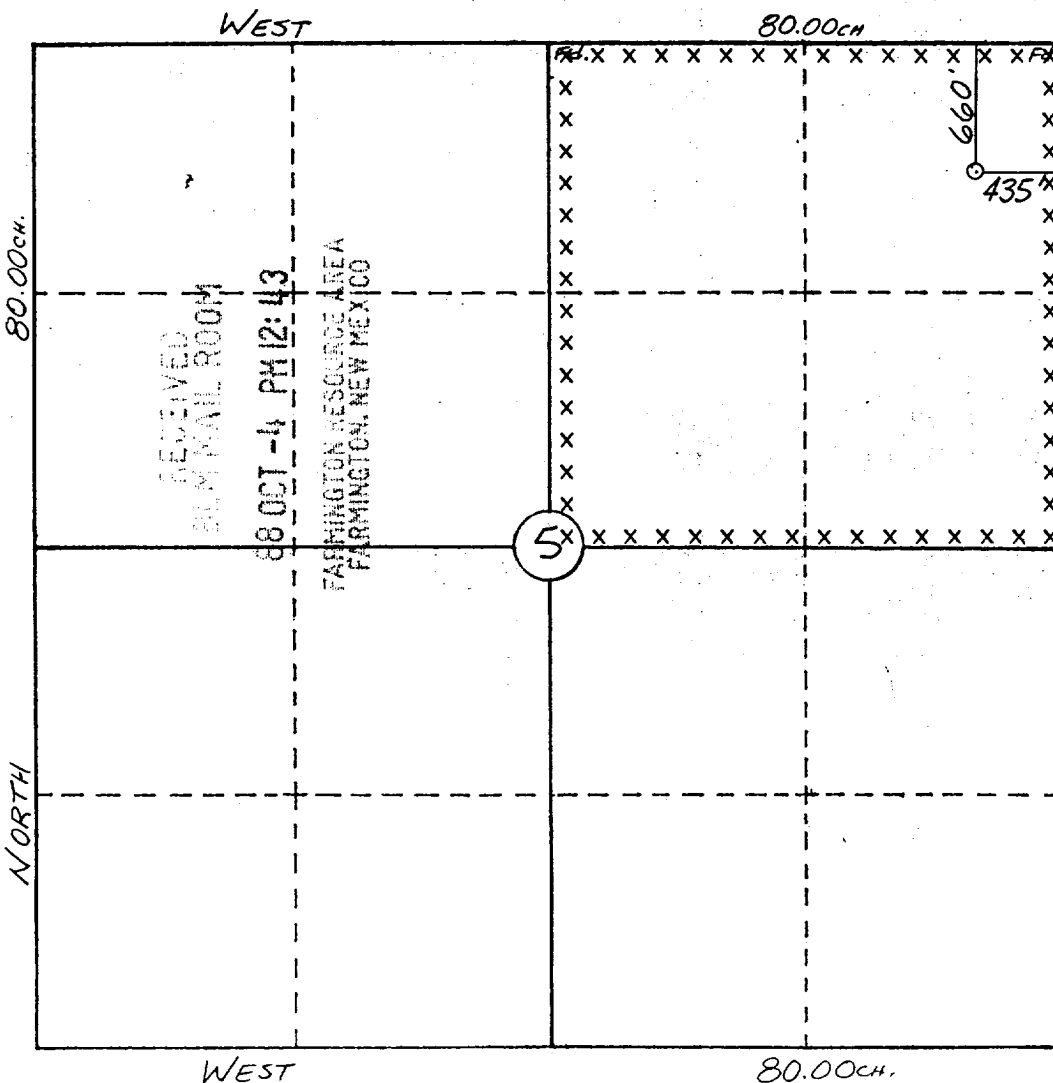
Operator S.E.R.H., INC.			Lease NAVAJO 5		Well No. 3
Unit Letter A	Section 5	Township 26 N	Range 19 W	County SAN JUAN	
Actual Footage Location of Well: <div style="display: flex; justify-content: space-between;"> 660 feet from the North line and 435 feet from the East line </div>					
Ground Level Elev. 5882	Producing Formation Mississippian	Pool Beautiful Mtn-Mississippian	Dedicated Acreage 160 Acres		

1. Outline the acreage dedicated to the subject well by colored pencil or hatchure marks on the plat below.
2. If more than one lease is dedicated to the well, outline each and identify the ownership thereof (both as to working interest and royalty).
3. If more than one lease of different ownership is dedicated to the well, have the interests of all owners been consolidated by communitization, unitization, force-pooling, etc?

☐ Yes ☐ No If answer is "yes," type of consolidation _____

If answer is "no," list the owners and tract descriptions which have actually been consolidated. (Use reverse side of this form if necessary.) _____

No allowable will be assigned to the well until all interests have been consolidated (by communitization, unitization, forced-pooling, or otherwise) or until a non-standard unit, eliminating such interests, has been approved by the Commission.



CERTIFICATION

I hereby certify that the information contained herein is true and complete to the best of my knowledge and belief.

A. R. Kendrick

Name
A. R. Kendrick

Position
Agent

Company
S.E.R.H., Inc.

Date
October 3, 1988

I hereby certify that the well location shown on this plat was plotted from field notes of actual surveys made by me or under my supervision, and that the same is true and correct to the best of my knowledge and belief.

Date Surveyed
9-30-88
WILLIAM E. MAITLAND II
 Registered Professional Engineer
 and/or Land Surveyor
#8466
 Certificate No. **8466**



STATE OF NEW MEXICO

ENERGY, MINERALS AND NATURAL RESOURCES DEPARTMENT

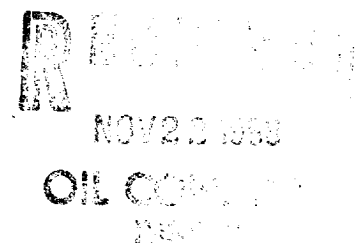
OIL CONSERVATION DIVISION

GARREY CARRUTHERS
GOVERNOR

POST OFFICE BOX 2088
STATE LAND OFFICE BUILDING
SANTA FE, NEW MEXICO 87504
(505) 827-5800

November 16, 1988

S.E.R.H., Inc.
c/o A. R. Kendrick
Box 516
Aztec, NM 87410



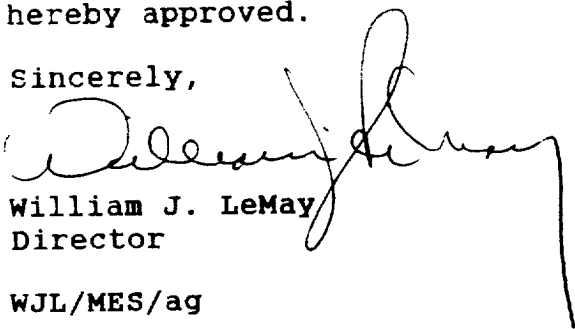
Administrative Order NSL-2606

Dear Mr. Kendrick:

Reference is made to your application of September 16, 1988 on behalf of S.E.R.H., Inc. for a non-standard gas well location for the Navajo "5" Well No. 3 to be located 660 feet from the North line and 435 feet from the East line (Unit A) of Section 5, Township 26 North, Range 19 West, NMPM, Undesignated Beautiful Mountain-Mississippian Pool, San Juan County, New Mexico. The NE/4 of said Section 5 shall be dedicated to the well forming a standard 160-acre gas spacing and proration unit for said pool.

By the authority granted me under the provisions of General Rule 104 F(I), the above-described unorthodox gas well location is hereby approved.

Sincerely,


William J. LeMay
Director

WJL/MES/ag

cc: Oil Conservation Division - Aztec
New Mexico Oil & Gas Engineering Committee - Hobbs
US Bureau of Land Management - Farmington

A. R. KENDRICK

BOX 516 • AZTEC, NEW MEXICO 87410 • (505) 334-2555

October 3 1988

AMENDED

Oil Conservation Division
Room 206
310 Old Santa Fe Trail
Santa Fe, New Mexico 87503

Re: Application for Non-Standard Location

Gentlemen:

Mr. Gary Jameson of the Bureau of Indian Affairs and Mr. Victor Grizzle of the Bureau of Land Management requested that the location be moved from 660' FNL 560' FEL to this new location due to topographical conditions.

Therefore, we respectfully request approval of the non-standard location of the S.E.R.H., Inc. Navajo 5 #3 well to be located **660' FNL 435' FEL** of Section 5, T 26 N, R 19 W, in the Beautiful Mountain- Mississippian Gas Pool.

The acreage shown on the enclosed plat is all on the Navajo Indian Reservation.

S.E.R.H., Inc. operates all offset wells; therefore, no notices are being sent to offset operators.

If further information is needed, please contact me.

Yours very truly,


A. R. Kendrick

Enclosures: Well location plat
Location profile sheet
Topographic map
Offset operator map

RECEIVED

OCT 04 1988

OIL CON. DIV
DIST. 2

xc: Oil Conservation Division, 1000 Rio Brazos Road, Aztec, New Mexico 87410
Bureau of Land Management, 1235 La Plata Highway, Farmington, New Mexico 87401
S.E.R.H., Inc., P.O. Box 312, Otis, Kansas 67565

**NEW MEXICO OIL CONSERVATION COMMISSION
WELL LOCATION AND ACREAGE DEDICATION PLAT**

Form C-102
Supersedes C-128
Effective 1-1-85

All distances must be from the outer boundaries of the Section.

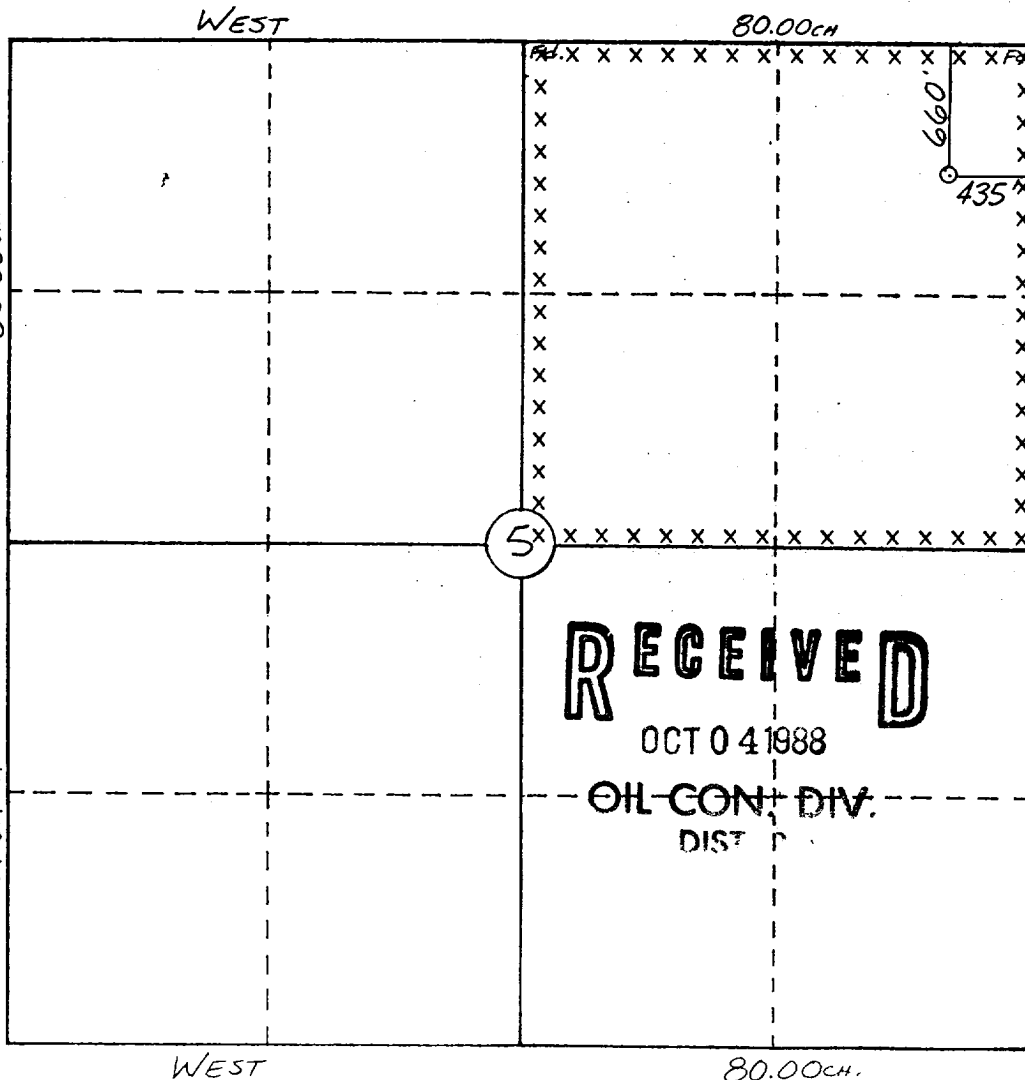
Operator S.E.R.H., INC.			Lease NAVAJO 5		Well No. 3
Unit Letter A	Section 5	Township 26 N	Range 19 W	County SAN JUAN	
Actual Footage Location of Well: <div style="display: flex; justify-content: space-between;"> 660 feet from the North line and 435 feet from the East line </div>					
Ground Level Elev: 5892	Producing Formation Mississippian	Pool Beautiful Mtn-Mississippian		Dedicated Acreage 160 Acres	

1. Outline the acreage dedicated to the subject well by colored pencil or hatchure marks on the plat below,
2. If more than one lease is dedicated to the well, outline each and identify the ownership thereof (both as to working interest and royalty).
3. If more than one lease of different ownership is dedicated to the well, have the interests of all owners been consolidated by communitization, unitization, force-pooling, etc?

☐ Yes ☐ No If answer is "yes," type of consolidation _____

If answer is "no," list the owners and tract descriptions which have actually been consolidated. (Use reverse side of this form if necessary.) _____

No allowable will be assigned to the well until all interests have been consolidated (by communitization, unitization, forced-pooling, or otherwise) or until a non-standard unit, eliminating such interests, has been approved by the Commission.



CERTIFICATION

I hereby certify that the information contained herein is true and complete to the best of my knowledge and belief.

A. R. Kendrick

Name
A. R. Kendrick

Position
Agent

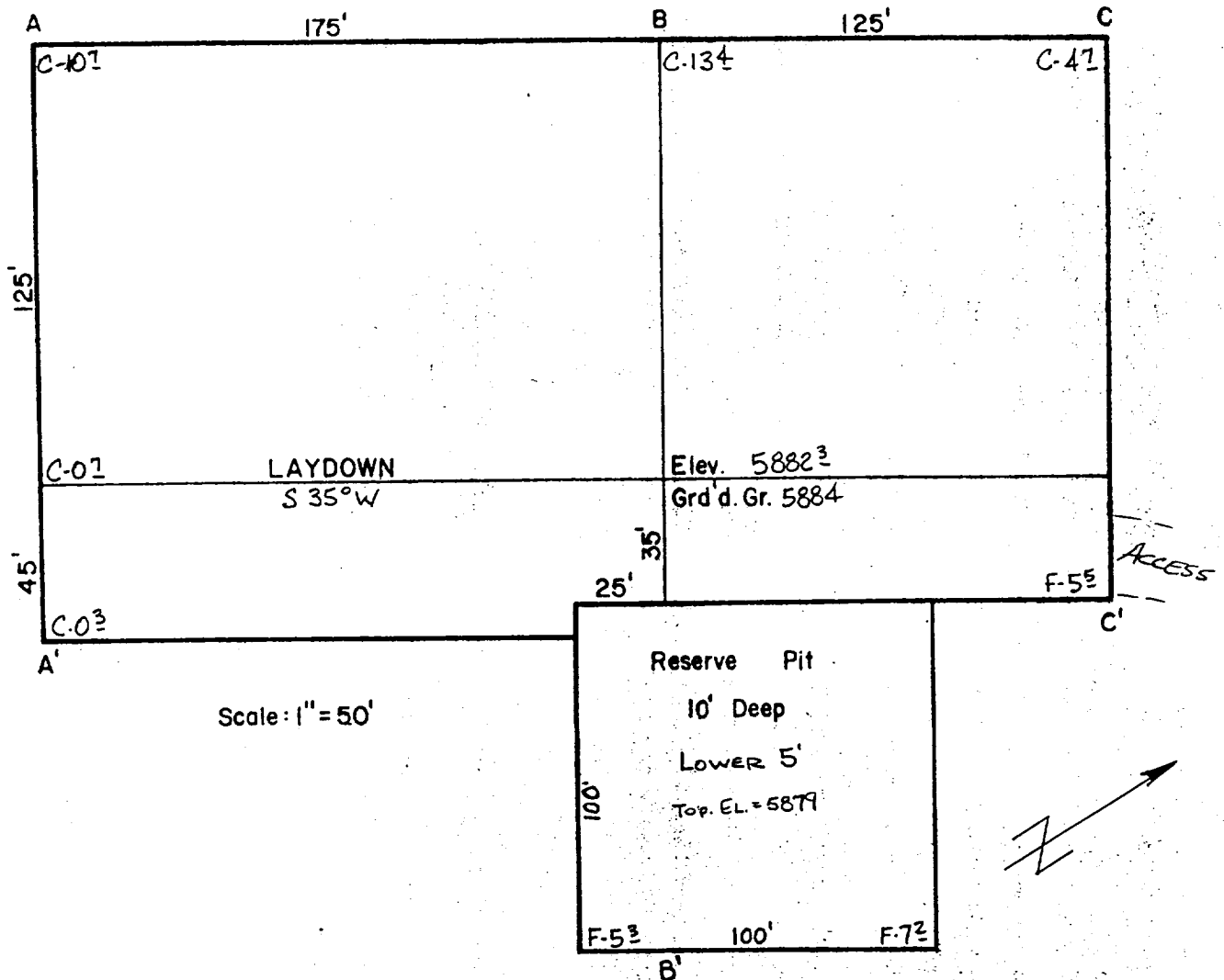
Company
S.E.R.H., Inc.

Date
October 3, 1988

I hereby certify that the well location shown on this plat was plotted from field notes of actual surveys made by me or under my supervision, and that the same is true and correct to the best of my knowledge and belief.

Date Surveyed 9/30/88	
Surveyor William E. Matlock II	
Registered Professional Engineer and/or Land Surveyor #8466	
Certificate No. 468	

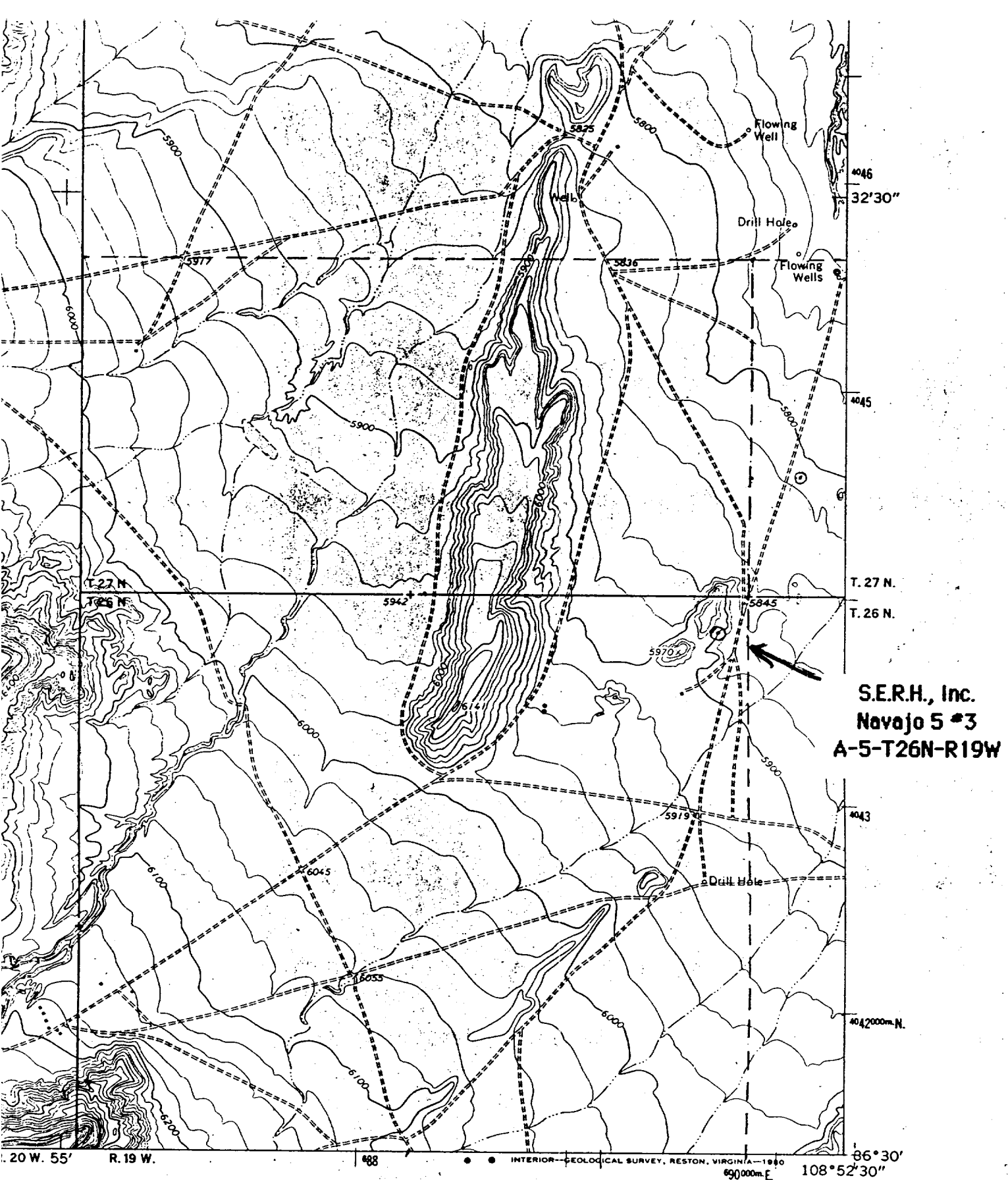
S.F.R.H., INC.
 NAVAJO 5-3
 660' FNL & 435' FEL
 Sec. 5, T26N, R19W
 San Juan Co., N.M.



A-A'	Vert.: 1" = 30'	Horiz.: 1" = 100'	C/L
5890			
5880			

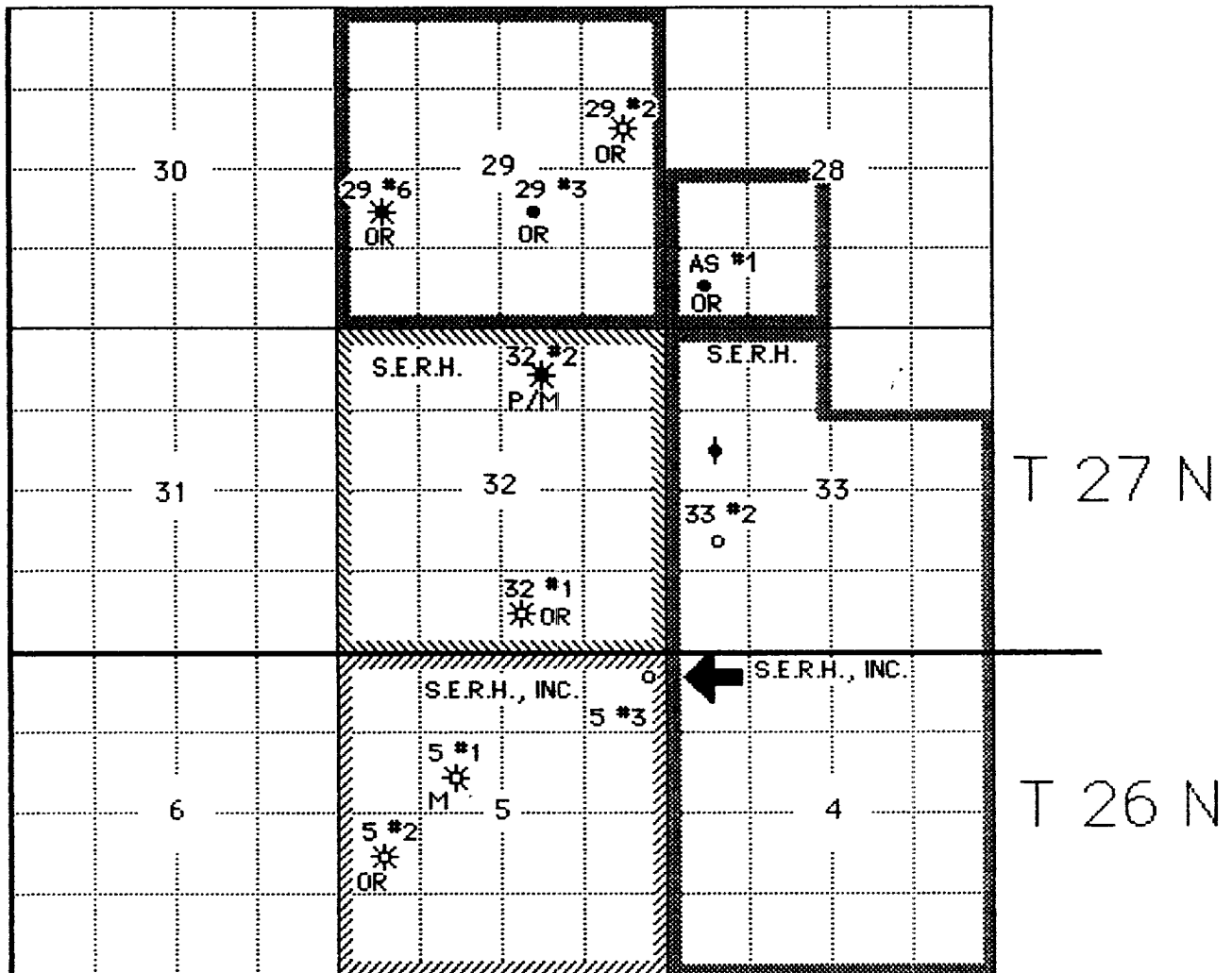
B-B'	Vert.: 1" = 30'	Horiz.: 1" = 100'	C/L
5890			
5880			

C-C'	Vert.: 1" = 30'	Horiz.: 1" = 100'	C/L
5890			
5880			



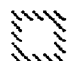
OFFSET OPERATORS

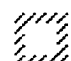
R 19 W



LEGEND:

- = OIL WELL
- * = OIL/GAS WELL
- * = GAS WELL
- OR = ORGAN ROCK
- P = PENNSYLVANIAN OIL WELL
- M = MISSISSIPPIAN GAS WELL

 = LEASE NO. N00-C-14-20-4158

 = LEASE NO. N00-C-14-20-4157

 = OPERATING AGREEMENT W/NAYAJO TRIBE