

UNITED STATES
DEPARTMENT OF THE INTERIOR
BUREAU OF LAND MANAGEMENT

APPLICATION FOR PERMIT TO DRILL, DEEPEN, OR PLUG BACK

1a. TYPE OF WORK

DRILL ☒

DEEPEN ☐

PLUG BACK ☐

b. TYPE OF WELL

OIL
WELL ☒

GAS
WELL ☐

OTHER

SINGLE
ZONE ☒

MULTIPLE
ZONE ☐

2. NAME OF OPERATOR

HIXON DEVELOPMENT COMPANY

3. ADDRESS OF OPERATOR

P. O. Box 2810, Farmington, New Mexico 87499

4. LOCATION OF WELL (Report location clearly and in accordance with any State requirements.)*
At surface

At proposed prod. zone 660' FSL, 2520' FWL, Sec 30, T26N, R13W, NMPM

14. DISTANCE IN MILES AND DIRECTION FROM NEAREST TOWN OR POST OFFICE*

24.8 miles south of Farmington, New Mexico

10. DISTANCE FROM PROPOSED*

LOCATION TO NEAREST
PROPERTY OR LEASE LINE, FT.
(Also to nearest drlg. unit line, if any)

660'

16. NO. OF ACRES IN LEASE

627.34

17. NO. OF ACRES ASSIGNED
TO THIS WELL

80

18. DISTANCE FROM PROPOSED LOCATION*
TO NEAREST WELL, DRILLING, COMPLETED,
OR APPLIED FOR, ON THIS LEASE, FT.

N/A

19. PROPOSED DEPTH

5400'

20. ROTARY OR CABLE TOOLS

Rotary

21. ELEVATIONS (Show whether DF, RT, GR, etc.)

6474' GLE

22. APPROX. DATE WORK WILL START*

May 9, 1990

23. PROPOSED CASING AND CEMENTING PROGRAM
SUBJECT TO COMPLIANCE WITH ATTACHED
"GENERAL REQUIREMENTS".

SIZE OF HOLE	SIZE OF CASING	WEIGHT PER FOOT	SETTING DEPTH	QUANTITY OF CEMENT
12-1/4	8-5/8	24#	360	250 sks
7-7/8	5-1/2	15.5#	5400	600 sks

** Confidential*

It is proposed to drill the subject Bisti Lower Gallup oil well. This well will be evaluated on the basis of open hole logs. Please see attached Onshore Oil and Gas Order No. 1 data.

RECEIVED

JUN 25 1990

OIL CON. DIV.
DIST. 3

IN ABOVE SPACE DESCRIBE PROPOSED PROGRAM: If proposal is to deepen or plug back, give data on present productive zone and proposed new productive zone. If proposal is to drill or deepen directionally, give pertinent data on subsurface locations and measured and true vertical depths. Give blowout preventer program, if any.

24.

SIGNED

John C. Corbett

TITLE Vice President-Exploration

DATE April 25, 1990

(This space for Federal or State office use)

PERMIT NO.

APPROVAL DATE

APPROVED

APPROVED BY

TITLE

CONDITIONS OF APPROVAL, IF ANY:

Held C-104 For Corrected plat
NMOC

JUN 15 1990
AREA MANAGER

*See Instructions On Reverse Side

Submit to Appropriate
District Office
State Lease - 4 copies
Fee Lease - 3 copies

State of New Mexico
Energy, Minerals and Natural Resources Department

Form C-102
Revised 1-1-89

OIL CONSERVATION DIVISION

P.O. Box 2088
Santa Fe, New Mexico 87504-2088

DISTRICT I
P.O. Box 1980, Hobbs, NM 88240

DISTRICT II
P.O. Drawer DD, Artesia, NM 88210

DISTRICT III
1000 Rio Brazos Rd., Aztec, NM 87410

WELL LOCATION AND ACREAGE DEDICATION PLAT

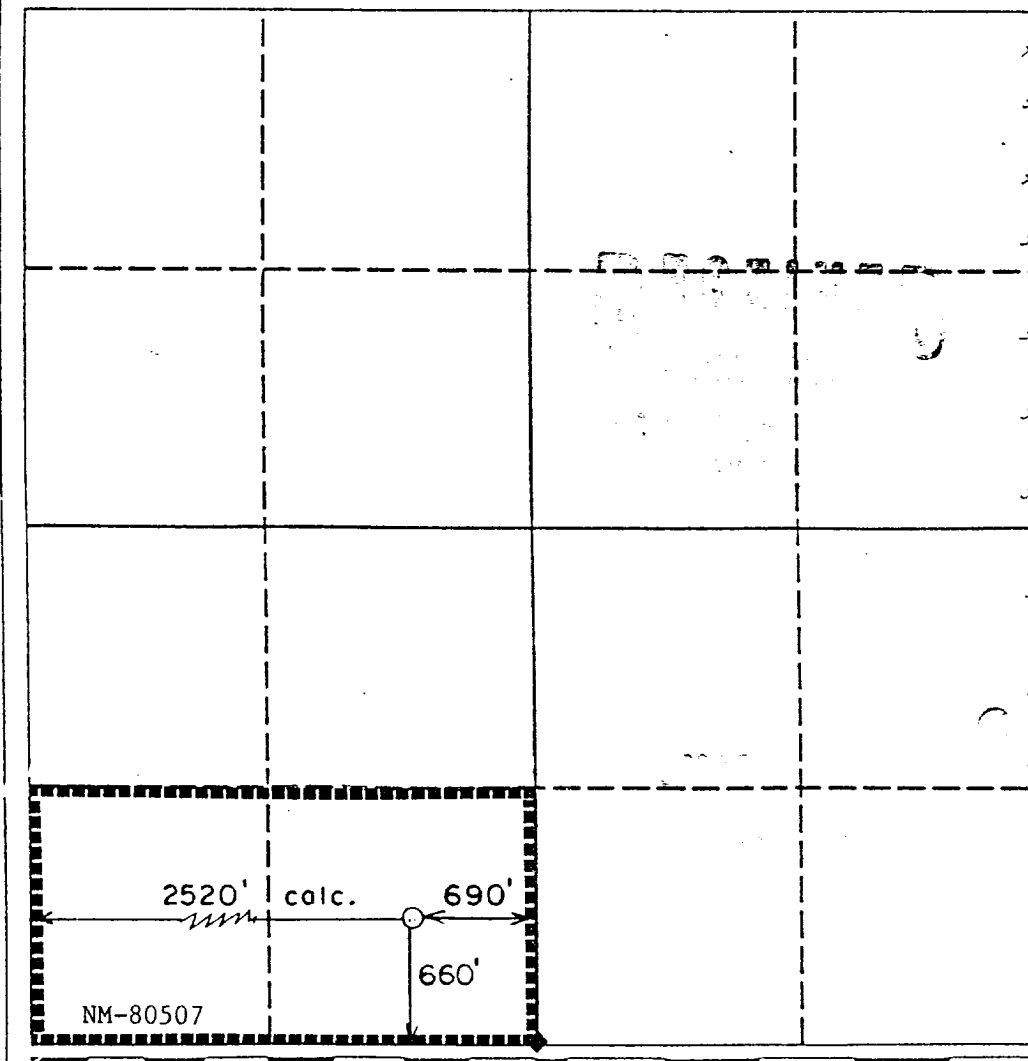
All Distances must be from the outer boundaries of the section

Operator HIXON DEVELOPMENT COMPANY			Lease <i>San Juan</i>		Well No. South Bisti #30-4
Unit Letter N	Section 30	Township 26 North	Range 13 West	County San Juan	

Actual Footage Location of Well:

660 feet from the South line and		2520 feet from the West line	
Ground level Elev. 6474'	Producing Formation Gallup	Pool Bisti Lower Gallup	Dedicated Acreage; 80 Acres

- Outline the acreage dedicated to the subject well by colored pencil or hatchure marks on the plat below.
- If more than one lease is dedicated to the well, outline each and identify the ownership thereof (both as to working interest and royalty).
- If more than one lease of different ownership is dedicated to the well, have the interest of all owners been consolidated by communitization, unitization, force-pooling, etc.?
☐ Yes ☐ No If answer is "yes" type of consolidation _____
If answer is "no" list the owners and tract descriptions which have actually been consolidated. (Use reverse side of this form if necessary.) _____
No allowable will be assigned to the well until all interests have been consolidated (by communitization, unitization, forced-pooling, or otherwise) or until a non-standard unit, eliminating such interest, has been approved by the Division.



OPERATOR CERTIFICATION

I hereby certify that the information contained herein is true and complete to the best of my knowledge and belief.

Signature

John C. Corbett

Printed Name

John C. Corbett

Position

Vice President-Exploration

Company

Hixon Development Company

Date

March 1, 1990

SURVEYOR CERTIFICATION

I hereby certify that the well location shown on this plat was plotted from field notes of actual surveys made by me or under my supervision, and that the same is true and correct to the best of my knowledge and belief.

Date Surveyed

1-21-90

Signature & Seal of Professional Surveyor

Donald G. Huddleston
6844
REGISTERED LAND SURVEYOR
6844

R 13 W

