

UNITED STATES
DEPARTMENT OF THE INTERIOR
BUREAU OF LAND MANAGEMENT

APPLICATION FOR PERMIT TO DRILL, DEEPEN, OR PLUG BACK

1a. TYPE OF WORK

DRILL ☒

DEEPEN ☐

PLUG BACK ☐

b. TYPE OF WELL

OIL
WELL ☐

GAS
WELL ☒

OTHER

SINGLE
ZONE ☒

MULTIPLE
ZONE ☐

2. NAME OF OPERATOR

Merrion Oil & Gas Corporation

3. ADDRESS OF OPERATOR

P. O. Box 840, Farmington, New Mexico 87499

4. LOCATION OF WELL (Report location clearly and in accordance with any State requirements.)*
At surface

790' FSL & 1295' FWL (SWSW)
At proposed prod. zone

14. DISTANCE IN MILES AND DIRECTION FROM NEAREST TOWN OR POST OFFICE*

20 miles South of Farmington, New Mexico

15. DISTANCE FROM PROPOSED*
LOCATION TO NEAREST
PROPERTY OR LEASE LINE, FT.
(Also to nearest drg. unit line, if any)

2000'

18. DISTANCE FROM PROPOSED LOCATION*
TO NEAREST WELL, DRILLING, COMPLETED,
OR APPLIED FOR, ON THIS LEASE, FT.

200

16. NO. OF ACRES IN LEASE

280 40

19. PROPOSED DEPTH

1325'

17. NO. OF ACRES ASSIGNED
TO THIS WELL

5/ 320

20. ROTARY OR CABLE TOOLS

Rotary

21. ELEVATIONS (Show whether DF, BT, GR, etc.)

5,991' GR

This section is subject to technical and
procedural review pursuant to 43 CFR 3165.3
and approval pursuant to 43 CFR 3165.4.

22. APPROX. DATE WORK WILL START*

July, 1990

23. PROPOSED CASING AND CEMENTING PROGRAM

SIZE OF HOLE	SIZE OF CASING	WEIGHT PER FOOT	SETTING DEPTH	QUANTITY OF CEMENT
9-3/4"	7"	20 lb/ft	100'	50 sx (59 cu.ft.)
6-1/4"	4-1/2"	10.5 lb/ft	1325'	130 sx (202 cu.ft.)

Propose to drill 9-3/4" surface hole to 100' KB. Will set approximately 100 ft. of 7", J-55, 20 lb/ft surface casing at 100 ft. KB with 50 sx (59 cu.ft.) of Class "B", with 2% CaCl₂. Top of cement at the surface. Wait on cement 10 hrs. Nipple up BOPS. Pressure test casing to 600 psi for 30 minutes. Drill 6-1/4" hole to total depth at 1,325 ft. Will run open hole logs. If well appears productive will set 4-1/2", J-55, 10.5 lb/ft production casing at total depth with 78 sx Class "B" with 2% D-79 (161 ft³) followed by 52 sx (63 cu.ft.) of Class "H", 2% gel. Estimated top of cement at the surface. Will perforate and stimulate as necessary to test well. Additional drilling program details attached.

IN ABOVE SPACE DESCRIBE PROPOSED PROGRAM: If proposal is to deepen or plug back, give data on present productive zone and proposed new productive zone. If proposal is to drill or deepen directionally, give pertinent data on subsurface locations and measured and true vertical depths. Give blowout preventer program, if any.

24. SIGNED Steven S. Dunn TITLE Operations Manager DATE 6-4-90

(This space for Federal or State office use)

PERMIT NO.

APPROVAL DATE

APPROVED BY

CONDITIONS OF APPROVAL, IF ANY:

AUG 17 1990

OIL CON. DIV

NM000

DIST. 3 *See Instructions On Reverse Side

Title 18 U.S.C. Section 1001, makes it a crime for any person knowingly and willfully to make to any department or agency of the United States any false, fictitious or fraudulent statements or representations as to any matter within its jurisdiction.

Submit to Appropriate
District Office
State Lease - 4 copies
Fee Lease - 3 copies

State of New Mexico
Energy, Minerals and Natural Resources Department

Form C-102
Revised 1-1-89

OIL CONSERVATION DIVISION

P.O. Box 2088

Santa Fe, New Mexico 87504-2088

DISTRICT I

P.O. Box 1980, Hobbs, NM 88240

DISTRICT II

P.O. Drawer DD, Artesia, NM 88210

DISTRICT III

1000 Rio Brazos Rd., Aztec, NM 87410

WELL LOCATION AND ACREAGE DEDICATION PLAT

All Distances must be from the outer boundaries of the section

Operator MERRION OIL & GAS CORPORATION			Lease SUSCO		Well No. 3
Unit Letter M	Section 9	Township 26 N	Range 12 W	County San Juan	
Actual Footage Location of Well: 790 feet from the South line and 1295 feet from the West line					
Ground level Elev. 5991	Producing Formation Fruitland	Pool Basin Fruitland			Dedicated Acreage: 320 Acres

- Outline the acreage dedicated to the subject well by colored pencil or hatchure marks on the plat below.
- If more than one lease is dedicated to the well, outline each and identify the ownership thereof (both as to working interest and royalty).
- If more than one lease of different ownership is dedicated to the well, have the interest of all owners been consolidated by communitization, unitization, force-pooling, etc.?
☒ Yes ☐ No If answer is "yes" type of consolidation will be communitized
If answer is "no" list the owners and tract descriptions which have actually been consolidated. (Use reverse side of this form if necessary.)
No allowable will be assigned to the well until all interests have been consolidated (by communitization, unitization, forced-pooling, or otherwise) or until a non-standard unit, eliminating such interest, has been approved by the Division.

330 660 990 1320 1650 1980 2310 2640 2000 1500 1000 500 0

WEST

79.90 CH.

RECEIVED
AUG 17 1990
OIL CON. DIV.
DIST. 3

NM 25453

NM 63320

1295'

790'

N 89° 57' W

79.90 CH.

OPERATOR CERTIFICATION

I hereby certify that the information contained herein is true and complete to the best of my knowledge and belief.

Signature

Printed Name

Steven S. Dunn

Position

Operations Manager

Company

Merrion Oil & Gas Corp.

Date

6/4/90

SURVEYOR CERTIFICATION

I hereby certify that the well location shown on this plat was plotted from field notes of actual surveys made by me or under my supervision, and that the same is true and correct to the best of my knowledge and belief.

6-2-90

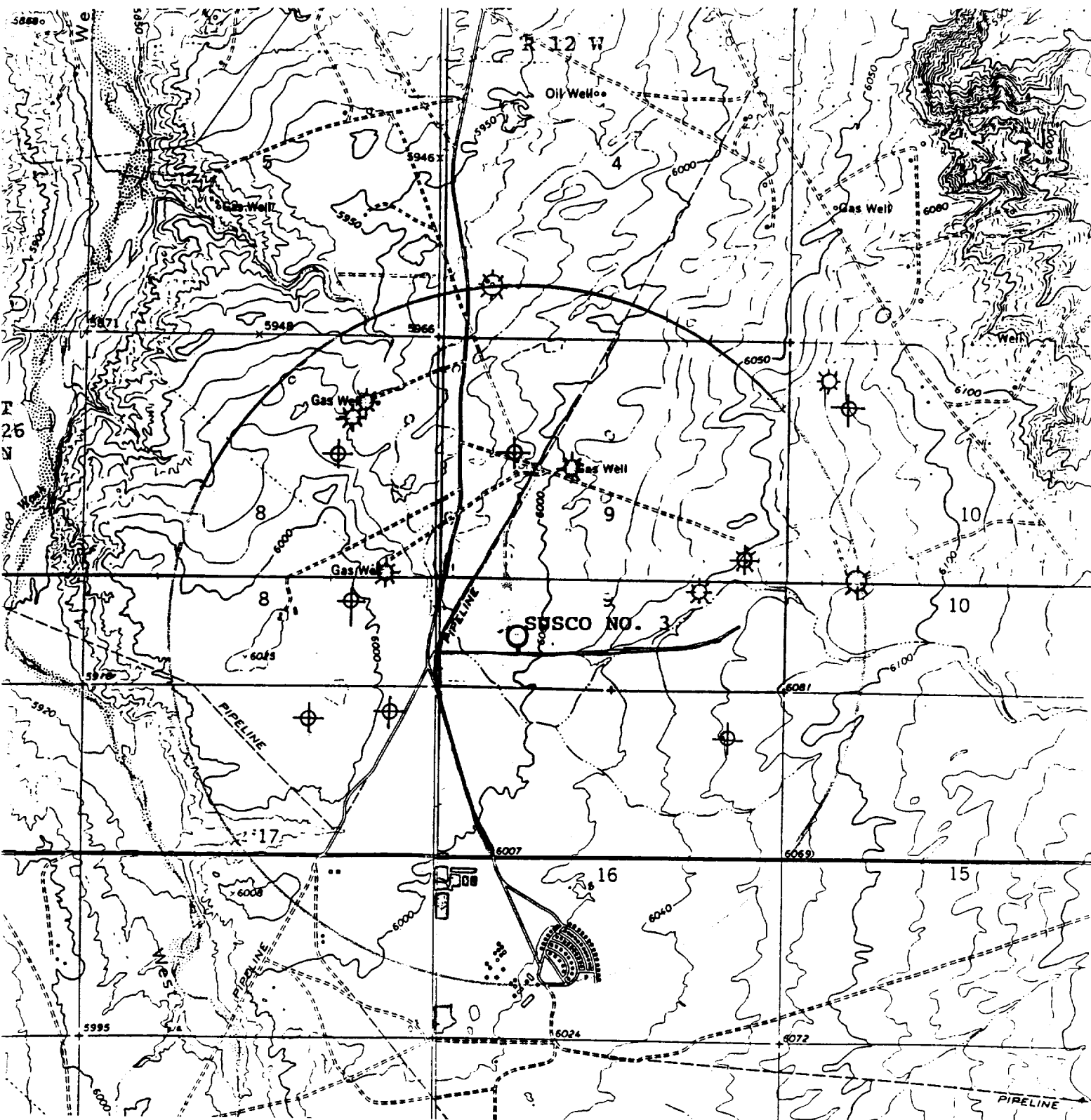
Date Surveyed

William E. Mahanke II

Signature & Seal of Professional Surveyor

Certificate No.

8466



LEGEND

- PROPOSED LOCATION
- ☆ PRODUCING GAS WELL
- ⊠ P&A GAS WELL
- ⊕ D&A WELLS
- EXISTING ROAD
- PROPOSED NEW ACCESS ROAD
- LEASE BOUNDARY

MERRION OIL & GAS CORPORATION

SUSCO NO. 3

790' FSL & 1295' FWL
 Section 9, T26N, R12W
 San Juan County, New Mexico