

**UNITED STATES
DEPARTMENT OF THE INTERIOR
BUREAU OF LAND MANAGEMENT**

SUBMIT IN TRIPLICATE*
(Other instructions on
reverse side)

Form approved.
Budget Bureau No. 1004-0136
Expires August 31, 1985

31-045-28293

APPLICATION FOR PERMIT TO DRILL, DEEPEN, OR PLUG BACK

5. LEASE DESIGNATION AND SERIAL NO. SF - 078476
6. IF INDIAN, ALLOTTEE OR TRIBE NAME NONE
7. UNIT AGREEMENT NAME -----
8. FARM OR LEASE NAME Oxnard W.N Federal
9. WELL NO. #11
10. FIELD AND POOL, OR WILDCAT Basin-Fruitland Coal Gas
11. SEC., T., M., OR BLK. AND SURVEY OR AREA Sec 15, T27N-R8W
12. COUNTY San Juan
13. STATE NM
14. DISTANCE FROM PROPOSED LOCATION TO NEAREST PROPERTY OR LEASE LINE, FT. (Also to nearest drlg. line, if any) 1395'
15. NO. OF ACRES IN LEASE 2560 1440
16. NO. OF ACRES ASSIGNED TO THIS WELL 320, S/2
17. DISTANCE FROM PROPOSED LOCATION TO NEAREST WELL, DRILLING, COMPLETED, OR APPLIED FOR, ON THIS LEASE, FT. 254'
18. PROPOSED DEPTH 2170'
19. ROTARY OR CABLE TOOLS Rotary
20. ELEVATIONS (Show whether GH or KB) 5904.0' GR
21. APPROX. DATE WORK WILL START Spud 11/90

1a. TYPE OF WORK **DRILL** **DEEPEN** **PLUG BACK**

b. TYPE OF WELL
OIL WELL GAS WELL OTHER _____
SINGLE ZONE MULTIPLE ZONE

2. NAME OF OPERATOR
ARCO Oil and Gas Company, a Division of Atlantic Richfield Co.

3. ADDRESS OF OPERATOR
P.O. Box 1610, Midland, Texas 79702

4. LOCATION OF WELL (Report clearly and in accordance with any State requirements.)
At surface **1500' FSL & 1395' FWL (Unit letter K)**
At proposed Prod. zone **Approximately the same**

13. DISTANCE IN MILES AND DIRECTION FROM NEAREST TOWN OR POST OFFICE
approximately 19 miles SE of Blanco, New Mexico

15. DISTANCE FROM PROPOSED LOCATION TO NEAREST PROPERTY OR LEASE LINE, FT.
(Also to nearest drlg. line, if any) **1395'**

16. NO. OF ACRES IN LEASE
2560 1440

17. NO. OF ACRES ASSIGNED TO THIS WELL
320, S/2

18. DISTANCE FROM PROPOSED LOCATION TO NEAREST WELL, DRILLING, COMPLETED, OR APPLIED FOR, ON THIS LEASE, FT.
254'

19. PROPOSED DEPTH
2170'

20. ROTARY OR CABLE TOOLS
Rotary

21. ELEVATIONS (Show whether GH or KB)
5904.0' GR

22. APPROX. DATE WORK WILL START
Spud 11/90

PROPOSED CASING AND CEMENTING PROGRAM

DRILLING OPERATIONS AUTHORIZED ARE
SUBJECT TO COMPLIANCE WITH ATTACHED
"GENERAL REQUIREMENTS," 119

SIZE OF HOLE	SIZE OF CASING	WEIGHT PER FOOT	SETTING DEPTH	QUANTITY OF CEMENT
12-1/4"	8-5/8"	24#	500'	384 cuft/325 SX
7-7/8"	5-1/2"	15.5#	2170'	470 cuft/296 SX

It is proposed to drill a 12-1/4" hole to 500' using fresh water spud mud. After setting surface casing, the shoe will be drilled out with a 7-7/8" bit, continuing to TD. A low solids, fresh water gel/polymer mud system will be utilized. A water loss of less than 20cc will be maintained and a mud weight of 9.5 ppg will be used to balance the 1600 psi Fruitland pore pressure. At TD, open-hole logs consisting of GR/CAL/FDC will be run and 5-1/2" production casing will be set and cemented to surface.

Pursuant to the " Onshore Oil and Gas Order #1" attachments are as follows:

- 1. Certified Location Plat**
- 2. Drilling Plan with attachments**
- 3. Surface Use Plan with attachments**

IN ABOVE SPACE DESCRIBE PROPOSED PROGRAM: If proposal is to deepen or plug back, give data on present productive zone and proposed new productive zone. If proposal is to drill or deepen directionally, give pertinent data on subsurface locations and measured and true vertical depths. Give blowout preventer program, if any.

24. SIGNED *Ken W Gosnell* 915 688-5672 TITLE Regulatory Coordinator DATE 9-14-90



PERMIT NO. _____ APPROVAL DATE _____

APPROVED BY *[Signature]* TITLE _____ DATE _____

CONDITIONS OF APPROVAL, IF ANY:

**OIL CON. DIV.
DIST. 3**

***See Instructions On Reverse Side**

Title 18 U.S.C., Section 1001, makes it a crime for any person knowingly to make to any department or agency of the United States any false, fictitious or fraudulent statements or representations as to any matter within its jurisdiction.

[Handwritten initials]

NMOCD

[Handwritten signature]

Submit to Appropriate District Office
 State Lease - 4 copies
 Fee Lease - 3 copies

State of New Mexico
 Energy, Minerals and Natural Resources Department

Form C-102
 Revised 1-1-89

OIL CONSERVATION DIVISION
 P.O. Box 2088
 Santa Fe, New Mexico 87504-2088

DISTRICT I
 P.O. Box 1980, Hobbs, NM 88240

DISTRICT II
 P.O. Drawer DD, Artesia, NM 88210

DISTRICT III
 1000 Rio Brazos Rd., Aztec, NM 87410

WELL LOCATION AND ACREAGE DEDICATION PLAT

All Distances must be from the outer boundaries of the section

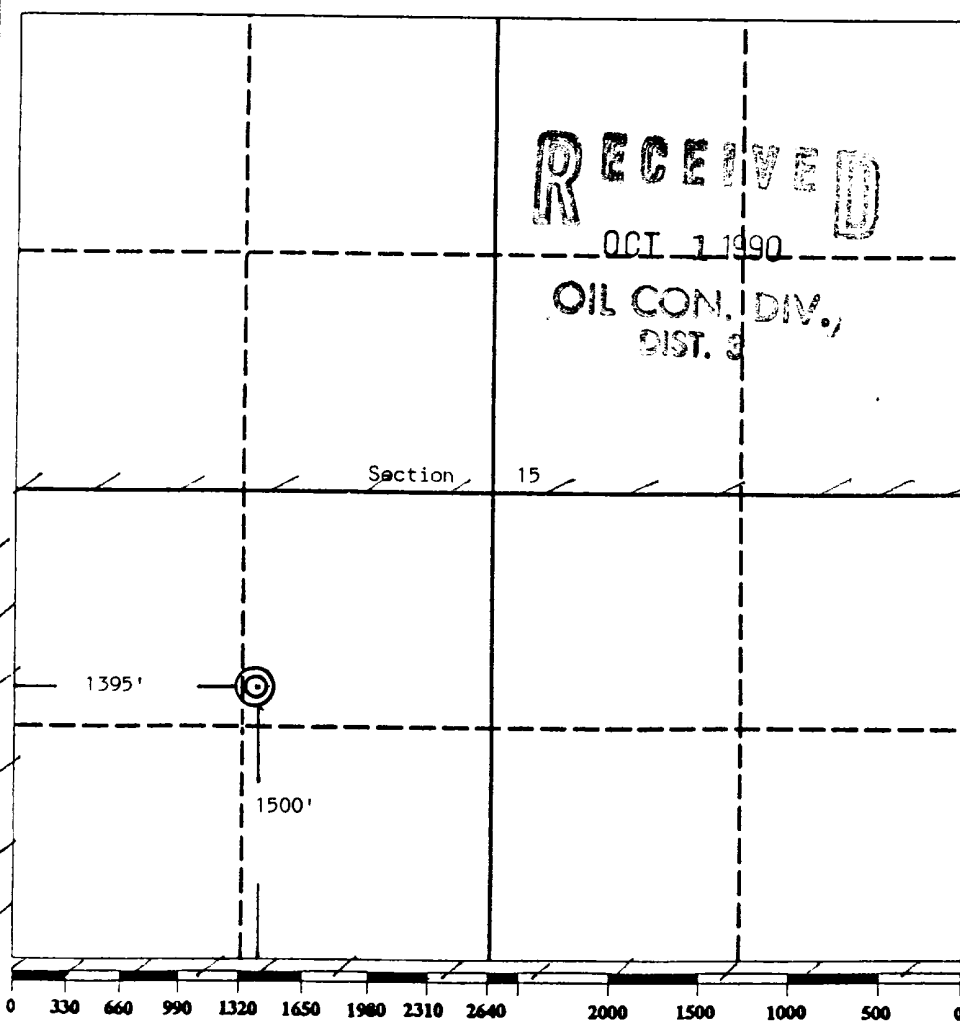
Operator ARCO Oil and Gas Company			Lease Oxnard W. N. Federal		Well No. 11
Unit Letter K	Section 15	Township 27 North	Range 8 West	County San Juan	
Actual Footage Location of Well: 1500 feet from the South line and 1395 feet from the West line					
Ground level Elev. 5904	Producing Formation Fruitland		Pool Basin-Fruitland Coal Gas		Dedicated Acreage: 320 Acres

- Outline the acreage dedicated to the subject well by colored pencil or hatchure marks on the plat below.
- If more than one lease is dedicated to the well, outline each and identify the ownership thereof (both as to working interest and royalty).
- If more than one lease of different ownership is dedicated to the well, have the interest of all owners been consolidated by communitization, unitization, force-pooling, etc.?

Yes No If answer is "yes" type of consolidation _____

If answer is "no" list the owners and tract descriptions which have actually been consolidated. (Use reverse side of this form if necessary.) _____

No allowable will be assigned to the well until all interests have been consolidated (by communitization, unitization, forced-pooling, or otherwise) or until a non-standard unit, eliminating such interest, has been approved by the Division.



OPERATOR CERTIFICATION
 I hereby certify that the information contained herein is true and complete to the best of my knowledge and belief.

Signature: Ken W. Gosnell
 Printed Name: Ken W. Gosnell
 Position: Regulatory Coordinator
 Company: ARCO Oil & Gas Co.
 Date: 9-14-90

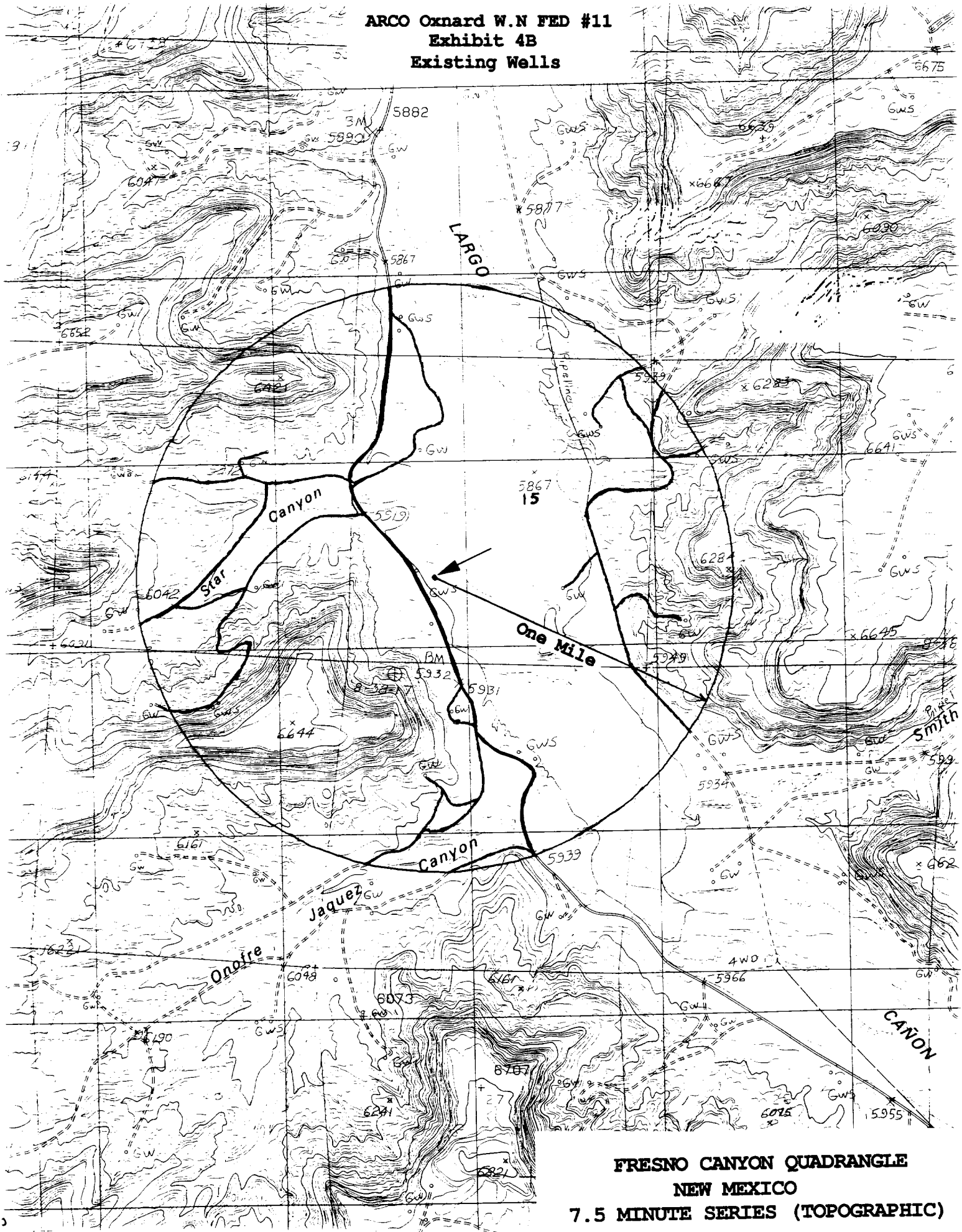
SURVEYOR CERTIFICATION
 I hereby certify that the well location shown on this plat was plotted from field notes of actual surveys made by me or under my supervision, and that the same is true and correct to the best of my knowledge and belief.

Date Surveyed: August 10, 1990

Signature & Seal of Professional Surveyor:

 Certified No. 5979
 Edgar Risenhoover

ARCO Oxnard W.N FED #11
Exhibit 4B
Existing Wells



FRESNO CANYON QUADRANGLE
NEW MEXICO
7.5 MINUTE SERIES (TOPOGRAPHIC)