

UNITED STATES
DEPARTMENT OF THE INTERIOR
BUREAU OF LAND MANAGEMENT

30-045-28392

APPLICATION FOR PERMIT TO DRILL, DEEPEN, OR PLUG BACK

1a. TYPE OF WORK
DRILL ☒ DEEPEN ☐ PLUG BACK ☐

b. TYPE OF WELL
OIL WELL ☐ GAS WELL ☒ OTHER ☐
SINGLE ZONE ☒ MULTIPLE ZONE ☐

2. NAME OF OPERATOR
Maralex Resources, Inc.

3. ADDRESS OF OPERATOR
518 17th Street, Suite 1030, Denver, CO 80202

4. LOCATION OF WELL (Report location clearly and in accordance with any State requirements.)
At surface 990' FSL and 1490' FWL (Unit Letter N)
At proposed prod. zone Same

14. DISTANCE IN MILES AND DIRECTION FROM NEAREST TOWN OR POST OFFICE*
Approximately 14 miles southeast of Blanco, NM

15. DISTANCE FROM PROPOSED*
LOCATION TO NEAREST
PROPERTY OR LEASE LINE, FT.
(Also to nearest drlg. unit line, if any) 990'

16. NO. OF ACRES IN LEASE
1121.95

17. NO. OF ACRES ASSIGNED
TO THIS WELL 321.33
w/ 320'

18. DISTANCE FROM PROPOSED LOCATION*
TO NEAREST WELL, DRILLING, COMPLETED,
OR APPLIED FOR, ON THIS LEASE, FT. 200'

19. PROPOSED DEPTH
3050'

20. ROTARY OR CABLE TOOLS
Rotary

21. ELEVATIONS (Show whether DF, RT, GR, etc.)
6727' GR, 6740' KB

22. APPROX. DATE WORK WILL START*
November 1, 1990

23. PROPOSED CASING AND CEMENTING PROGRAM

SIZE OF HOLE	SIZE OF CASING	WEIGHT PER FOOT	SETTING DEPTH
12-1/3"	8-5/8"	23# J-55	300'
7-7/8"	5-1/2"	23# J-55	3050'

DRILLING OPERATIONS AUTHORIZED ARE
SUBJECT TO COMPLIANCE WITH ATTACHED
"GENERAL REQUIREMENTS"
248 cuft/210 sx Class B w/2%
CaCl₂
511 cuft/406 sx 50:50 POZ
w/2% ge.
118 cuft/100 sx Class B neat
tail

Maralex Resources, Inc. proposes to drill a 12-1/4" hole to 300' using a native fresh water mud. The 8-5/8" surface string will be cemented back to surface. Casing will then be drilled out with a 7-7/8" bit using a low solids, non-dispersed fresh water mud. Upon reaching TD, a full suite of open hole logs will be run and 5-1/2" production casing will be set and cemented back to surface. In accordance with "On Shore Oil and Gas Order #1", attached is the Drilling Plan and Surface Use Plan that we will follow in drilling the subject well.

IN ABOVE SPACE DESCRIBE PROPOSED PROGRAM: If proposal is to deepen or deepen directionally, give pertinent data on subsurface locations and measured and true vertical depths. Give blowout preventer program, if any.

24. SIGNED A. M. O'Hare TITLE President DATE 10/5/90

(This space for Federal or State office use)

PERMIT NO. _____ APPROVAL DATE _____

APPROVED BY _____ TITLE _____

CONDITIONS OF APPROVAL, IF ANY:

NMOCD

*See Instructions On Reverse Side

Title 18 U.S.C. Section 1001, makes it a crime for any person knowingly and willfully to make to any department or agency of the United States any false, fictitious or fraudulent statements or representations as to any matter within its jurisdiction.

Submit to Appropriate
District Office
State Lease - 4 copies
Fee Lease - 3 copies

State of New Mexico
Energy, Minerals and Natural Resources Department

Form C-102
Revised 1-1-89

OIL CONSERVATION DIVISION

DISTRICT I
P.O. Box 1980, Hobbs, NM 88240

P.O. Box 2088

Santa Fe, New Mexico 87504-2088

DISTRICT II
P.O. Drawer DD, Artesia, NM 88210

DISTRICT III
1000 Rio Brazos Rd., Aztec, NM 87410

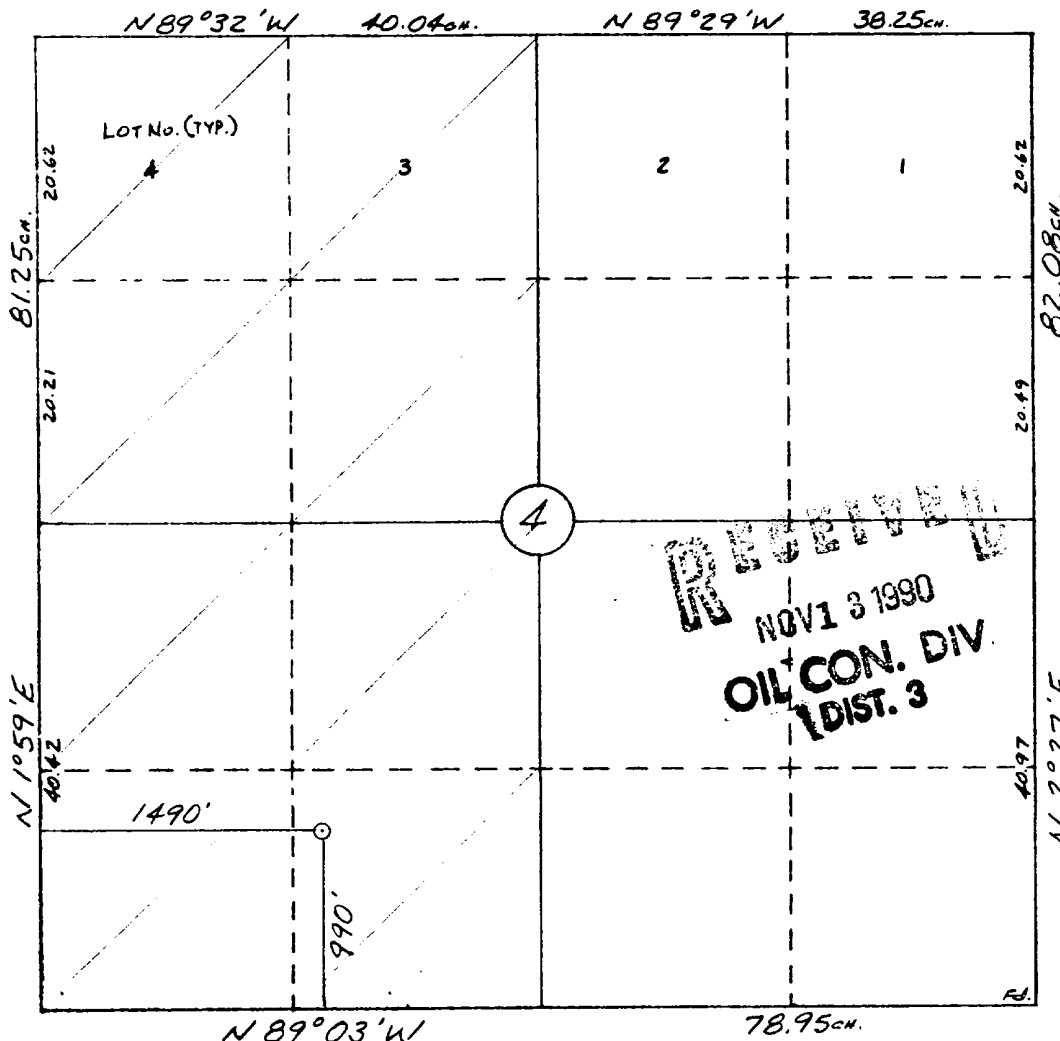
WELL LOCATION AND ACREAGE DEDICATION PLAT

All Distances must be from the outer boundaries of the section

Operator MARALEX RESOURCES, INC.			Lease GRAHAM "B" W.N. FEDERAL		Well No. 11
Unit Letter N	Section 4	Township 27 N	Range 8 W	County San Juan	
Actual Footage Location of Well: 990 feet from the South line and 1490 feet from the West line					
Ground level Elev. 6727	Producing Formation Fruitland	Pool Basin-Fruitland Coal Gas		Dedicated Acreage 328.33 Acres	

1. Outline the acreage dedicated to the subject well by colored pencil or hatchure marks on the plat below.
2. If more than one lease is dedicated to the well, outline each and identify the ownership thereof (both as to working interest and royalty).
3. If more than one lease of different ownership is dedicated to the well, have the interest of all owners been consolidated by communization, unitization, force-pooling, etc?
☐ Yes ☒ No If answer is "yes" type of consolidation _____
If answer is "no" list the owners and tract descriptions which have actually been consolidated. (Use reverse side of this form if necessary.)
No allowable will be assigned to the well until all interests have been consolidated (by communization, unitization, forced-pooling, or otherwise) or until a non-standard unit, eliminating such interest, has been approved by the Division.

330 660 990 1320 1650 1980 2310 2640 2000 1500 1000 500 0



OPERATOR CERTIFICATION

I hereby certify that the information contained herein is true and complete to the best of my knowledge and belief.

Signature
A. M. O'Hare
Printed Name
A. M. O'Hare
Position
President
Company
Maralex Resources, Inc
Date
10/5/90

SURVEYOR CERTIFICATION

I hereby certify that the well location shown on this plat was plotted from field notes of actual surveys made by me or under my supervision, and that the same is true and correct to the best of my knowledge and belief. 9-25-90

Date Surveyed
William F. Mahnke II

Signature & Seal of Professional Surveyor
WILLIAM F. MAHNKE II
NEW MEXICO
#8466
Certified No. 8466
PROFESSIONAL LAND SURVEYOR

