

UNITED STATES  
DEPARTMENT OF THE INTERIOR  
BUREAU OF LAND MANAGEMENT

APPLICATION FOR PERMIT TO DRILL, DEEPEN, OR PLUG BACK

1a. TYPE OF WORK

DRILL ☒

DEEPEN ☐

PLUG BACK ☐

b. TYPE OF WELL

OIL  
WELL ☒

GAS  
WELL ☐

OTHER

SINGLE  
ZONE ☒

MULTIPLE  
ZONE ☐

2. NAME OF OPERATOR

Giant Exploration & Production Company

3. ADDRESS OF OPERATOR

P. O. Box 2810, Farmington, New Mexico 87499

4. LOCATION OF WELL (Report location clearly and in accordance with any State requirements.)\*

At surface

1650' FNL and 990' FWL, Sec. 32, T26N, R13W, NMPM

At proposed prod. zone

14. DISTANCE IN MILES AND DIRECTION FROM NEAREST TOWN OR POST OFFICE\*

25.2 miles south of Farmington, New Mexico

15. DISTANCE FROM PROPOSED\*

LOCATION TO NEAREST

PROPERTY OR LEASE LINE, FT.

(Also to nearest drlg. unit line, if any)

990'

16. NO. OF ACRES IN LEASE

480.00

18. DISTANCE FROM PROPOSED LOCATION\*

TO NEAREST WELL, DRILLING, COMPLETED,

OR APPLIED FOR, ON THIS LEASE, FT.

1400'

19. PROPOSED DEPTH

5500'

17. NO. OF ACRES ASSIGNED

TO THIS WELL

5/ 80

20. ROTARY OR CABLE TOOLS

Rotary

21. ELEVATIONS (Show whether DF, RT, GR, etc.)

This action is subject to technical and

procedural review pursuant to 43 CFR 3165.3 6485' GLE

and appeal pursuant to 43 CFR 3165.4. PROPOSED CASING AND CEMENTING PROGRAM

22. APPROX. DATE WORK WILL START\*

Upon receipt of approvals

DRILLING OPERATIONS AUTHORIZED ARE

AS SHOWN ON ATTACHED

QUANTITY OF CEMENT

250 sks

600 sks

SIZE OF HOLE	SIZE OF CASING	WEIGHT PER FOOT	SETTING DEPTH
12-1/4"	8-5/8"	24#	360'
7-7/8"	5-1/2"	15.5#	5500'

It is proposed to drill the subject Bisti Lower Gallup oil well. It will be evaluated on the basis of open hole logs. Please see attached Onshore Oil and Gas Order No. 1 data.

RECEIVED  
DEC 17 1990  
OIL CON. DIV.  
DIST. 3

IN ABOVE SPACE DESCRIBE PROPOSED PROGRAM: If proposal is to deepen or plug back, give data on present productive zone and proposed new productive zone. If proposal is to drill or deepen directionally, give pertinent data on subsurface locations and measured and true vertical depths. Give blowout preventer program, if any.

24.

SIGNED

John C. Corbett

TITLE Vice President-Exploration

DATE October 5, 1990

(This space for Federal or State office use)

PERMIT NO.

APPROVAL DATE

APPROVED BY

TITLE

CONDITIONS OF APPROVAL, IF ANY:

NMOOD

\*See Instructions On Reverse Side

Submit to Appropriate  
District Office  
State Lease - 4 copies  
Fee Lease - 3 copies

State of New Mexico  
Energy, Minerals and Natural Resources Department

Form C-102  
Revised 1-1-89

OIL CONSERVATION DIVISION

P.O. Box 2088  
Santa Fe, New Mexico 87504-2088

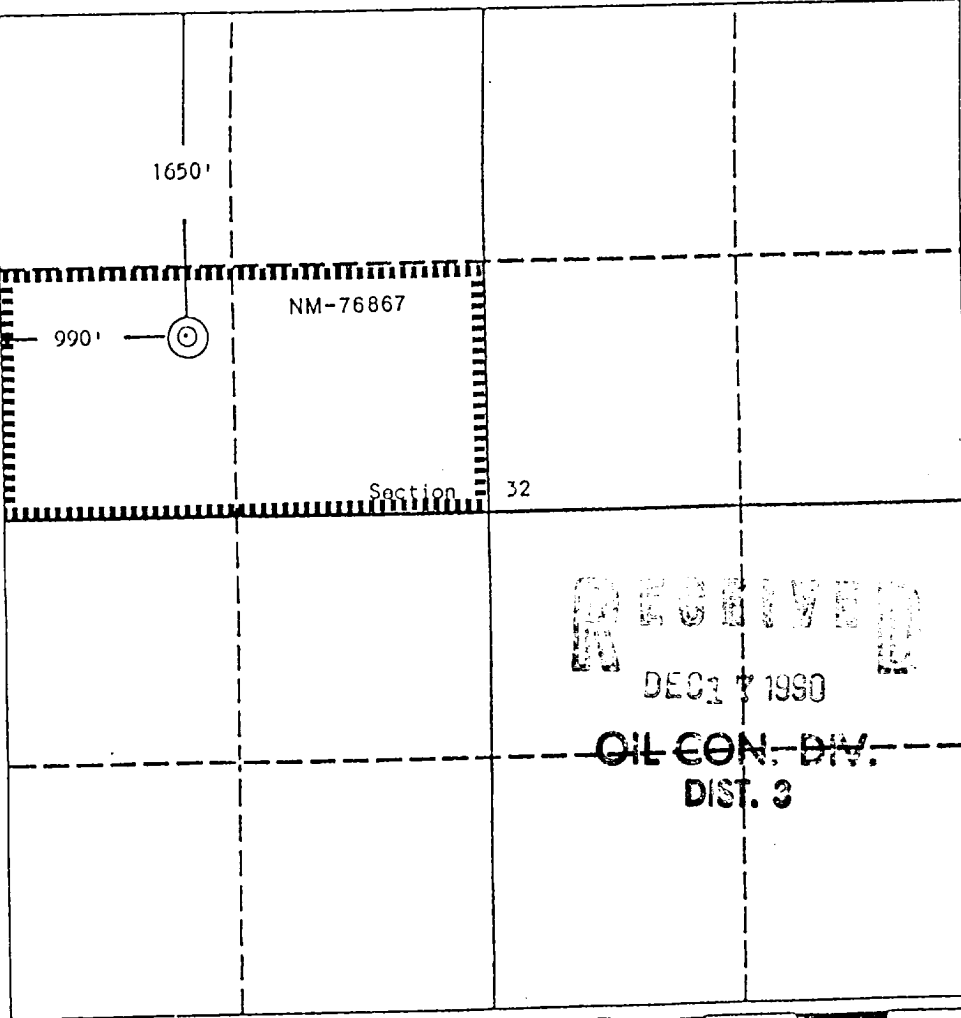
DISTRICT I  
P.O. Box 1980, Hobbs, NM 88240

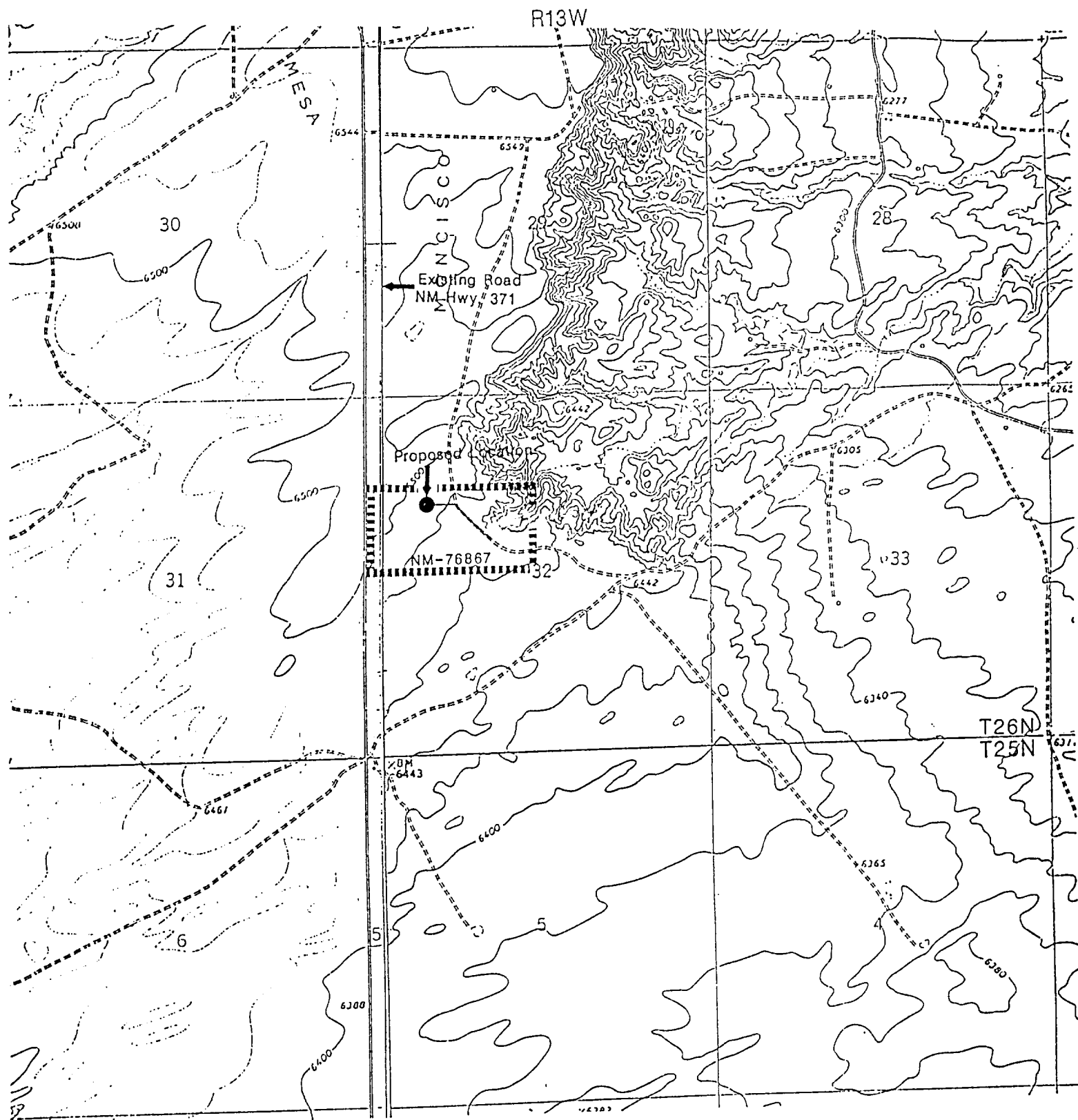
DISTRICT II  
P.O. Drawer DD, Artesia, NM 88210

DISTRICT III  
1000 Rio Brazos Rd., Aztec, NM 87410

WELL LOCATION AND ACREAGE DEDICATION PLAT

All Distances must be from the outer boundaries of the section

Operator Giant Exploration & Production Company		Lease South Bisti 32-E		Well No. #1
Unit Letter E	Section 32	Township 26 North	Range 13 West	County San Juan
Actual Footage Location of Well: 1650 feet from the North line and 990 feet from the West line				
Ground level Elev. 6485	Producing Formation Gallup	Pool Bisti Lower Gallup	Dedicated Acreage: 80 Acres	
<p>1. Outline the acreage dedicated to the subject well by colored pencil or hatchure marks on the plat below.</p> <p>2. If more than one lease is dedicated to the well, outline each and identify the ownership thereof (both as to working interest and royalty).</p> <p>3. If more than one lease of different ownership is dedicated to the well, have the interest of all owners been consolidated by communitization, unitization, force-pooling, etc.?</p> <p><input type="checkbox"/> Yes <input type="checkbox"/> No If answer is "yes" type of consolidation _____</p> <p>If answer is "no" list the owners and tract descriptions which have actually been consolidated. (Use reverse side of this form if necessary.) _____</p> <p>No allowable will be assigned to the well until all interests have been consolidated (by communitization, unitization, force-pooling, or otherwise) or until a non-standard unit, eliminating such interest, has been approved by the Division.</p>				
			<p><b>OPERATOR CERTIFICATION</b></p> <p>I hereby certify that the information contained herein is true and complete to the best of my knowledge and belief.</p> <p>Signature <i>John C. Corbett</i></p> <p>Printed Name John C. Corbett</p> <p>Position Vice President - Exploration</p> <p>Company Giant Exploration &amp; Production Co.</p> <p>Date October 2, 1990</p>	
<p><b>SURVEYOR CERTIFICATION</b></p> <p>I hereby certify that the well location shown on this plat was plotted from field notes of actual surveys made by me or under my supervision, and that the same is true and correct to the best of my knowledge and belief.</p> <p>Date Surveyed September 26, 1990</p> <p>Signature &amp; Seal of Professional Surveyor <i>Edgar L. Risenhoover</i></p> <p>Certificate No. 5879</p> <p>Edgar L. Risenhoover, R.S.</p>			<p><b>RECEIVED</b></p> <p>DEC 17 1990</p> <p>OIL CON. DIV.</p> <p>DIST. 3</p>	



GIANT EXPLORATION & PRODUCTION COMPANY

South Bisti 32-E  
 1650' FNL 990' FWL  
 Section 32, T26N, R13W  
 San Juan County New Mexico