

UNITED STATES
DEPARTMENT OF THE INTERIOR
BUREAU OF LAND MANAGEMENT

APPLICATION FOR PERMIT TO DRILL, DEEPEN, OR PLUG BACK

1. TYPE OF WORK
DRILL ☒ DEEPEN ☐ PLUG BACK ☐
2. TYPE OF WELL
OIL WELL ☐ GAS WELL ☒ OTHER ☐
3. NAME OF OPERATOR
Maralex Resources, Inc.
4. ADDRESS OF OPERATOR
518 17th St., Suite 1030, Denver, CO 80202
5. LOCATION OF WELL (Report location clearly and in accordance with any State requirements.)
At surface 1945' FSL, 1325' FWL
At proposed prod. zone

6. DISTANCE IN MILES AND DIRECTION FROM NEAREST TOWN OR POST OFFICE*
Approximately 21 miles southeast of Blanco, NM

7. DISTANCE FROM PROPOSED* LOCATION TO NEAREST PROPERTY OR LEASE LINE, FT. (Also to nearest drg. unit line, if any)
1315'

8. DISTANCE FROM PROPOSED LOCATION* TO NEAREST WELL, DRILLING, COMPLETED, OR APPLIED FOR, ON THIS LEASE, FT.
350'

9. NO. OF ACRES IN LEASE
1280-1440

10. PROPOSED DEPTH
3020'

11. NO. OF ACRES ASSIGNED TO THIS WELL
320

12. ROTARY OR CABLE TOOLS
Rotary

13. APPROX. DATE WORK WILL START*
4/7/91

14. ELEVATIONS (Show whether DF, RT, GR, etc.)
6577' GR, 6590' KB

15. PROPOSED CASING AND CEMENTING PROGRAM

16. DRILLING OPERATIONS AUTHORIZED ARE

17. QUANTITY OF CEMENT

18. GENERAL COMMENTS

19. GENERAL COMMENTS

20. GENERAL COMMENTS

21. GENERAL COMMENTS

22. GENERAL COMMENTS

23. GENERAL COMMENTS

24. GENERAL COMMENTS

25. GENERAL COMMENTS

26. GENERAL COMMENTS

27. GENERAL COMMENTS

28. GENERAL COMMENTS

29. GENERAL COMMENTS

30. GENERAL COMMENTS

31. GENERAL COMMENTS

32. GENERAL COMMENTS

33. GENERAL COMMENTS

34. GENERAL COMMENTS

35. GENERAL COMMENTS

36. GENERAL COMMENTS

37. GENERAL COMMENTS

38. GENERAL COMMENTS

39. GENERAL COMMENTS

40. GENERAL COMMENTS

41. GENERAL COMMENTS

42. GENERAL COMMENTS

43. GENERAL COMMENTS

44. GENERAL COMMENTS

45. GENERAL COMMENTS

46. GENERAL COMMENTS

47. GENERAL COMMENTS

48. GENERAL COMMENTS

49. GENERAL COMMENTS

50. GENERAL COMMENTS

51. GENERAL COMMENTS

52. GENERAL COMMENTS

53. GENERAL COMMENTS

54. GENERAL COMMENTS

55. GENERAL COMMENTS

56. GENERAL COMMENTS

57. GENERAL COMMENTS

58. GENERAL COMMENTS

59. GENERAL COMMENTS

60. GENERAL COMMENTS

61. GENERAL COMMENTS

62. GENERAL COMMENTS

63. GENERAL COMMENTS

64. GENERAL COMMENTS

65. GENERAL COMMENTS

66. GENERAL COMMENTS

67. GENERAL COMMENTS

68. GENERAL COMMENTS

69. GENERAL COMMENTS

70. GENERAL COMMENTS

71. GENERAL COMMENTS

72. GENERAL COMMENTS

73. GENERAL COMMENTS

74. GENERAL COMMENTS

75. GENERAL COMMENTS

76. GENERAL COMMENTS

77. GENERAL COMMENTS

78. GENERAL COMMENTS

79. GENERAL COMMENTS

80. GENERAL COMMENTS

81. GENERAL COMMENTS

82. GENERAL COMMENTS

83. GENERAL COMMENTS

84. GENERAL COMMENTS

85. GENERAL COMMENTS

86. GENERAL COMMENTS

87. GENERAL COMMENTS

88. GENERAL COMMENTS

89. GENERAL COMMENTS

90. GENERAL COMMENTS

91. GENERAL COMMENTS

92. GENERAL COMMENTS

93. GENERAL COMMENTS

94. GENERAL COMMENTS

95. GENERAL COMMENTS

96. GENERAL COMMENTS

97. GENERAL COMMENTS

98. GENERAL COMMENTS

99. GENERAL COMMENTS

100. GENERAL COMMENTS

101. GENERAL COMMENTS

102. GENERAL COMMENTS

103. GENERAL COMMENTS

104. GENERAL COMMENTS

105. GENERAL COMMENTS

106. GENERAL COMMENTS

107. GENERAL COMMENTS

108. GENERAL COMMENTS

109. GENERAL COMMENTS

110. GENERAL COMMENTS

111. GENERAL COMMENTS

112. GENERAL COMMENTS

113. GENERAL COMMENTS

114. GENERAL COMMENTS

115. GENERAL COMMENTS

116. GENERAL COMMENTS

117. GENERAL COMMENTS

118. GENERAL COMMENTS

119. GENERAL COMMENTS

120. GENERAL COMMENTS

121. GENERAL COMMENTS

122. GENERAL COMMENTS

123. GENERAL COMMENTS

124. GENERAL COMMENTS

125. GENERAL COMMENTS

126. GENERAL COMMENTS

127. GENERAL COMMENTS

128. GENERAL COMMENTS

129. GENERAL COMMENTS

130. GENERAL COMMENTS

131. GENERAL COMMENTS

132. GENERAL COMMENTS

133. GENERAL COMMENTS

134. GENERAL COMMENTS

135. GENERAL COMMENTS

136. GENERAL COMMENTS

137. GENERAL COMMENTS

138. GENERAL COMMENTS

139. GENERAL COMMENTS

140. GENERAL COMMENTS

141. GENERAL COMMENTS

142. GENERAL COMMENTS

143. GENERAL COMMENTS

144. GENERAL COMMENTS

145. GENERAL COMMENTS

146. GENERAL COMMENTS

147. GENERAL COMMENTS

148. GENERAL COMMENTS

149. GENERAL COMMENTS

150. GENERAL COMMENTS

151. GENERAL COMMENTS

152. GENERAL COMMENTS

153. GENERAL COMMENTS

154. GENERAL COMMENTS

155. GENERAL COMMENTS

156. GENERAL COMMENTS

157. GENERAL COMMENTS

158. GENERAL COMMENTS

159. GENERAL COMMENTS

160. GENERAL COMMENTS

161. GENERAL COMMENTS

162. GENERAL COMMENTS

163. GENERAL COMMENTS

164. GENERAL COMMENTS

165. GENERAL COMMENTS

166. GENERAL COMMENTS

167. GENERAL COMMENTS

168. GENERAL COMMENTS

169. GENERAL COMMENTS

170. GENERAL COMMENTS

171. GENERAL COMMENTS

172. GENERAL COMMENTS

173. GENERAL COMMENTS

174. GENERAL COMMENTS

175. GENERAL COMMENTS

176. GENERAL COMMENTS

177. GENERAL COMMENTS

178. GENERAL COMMENTS

179. GENERAL COMMENTS

180. GENERAL COMMENTS

181. GENERAL COMMENTS

182. GENERAL COMMENTS

183. GENERAL COMMENTS

184. GENERAL COMMENTS

185. GENERAL COMMENTS

186. GENERAL COMMENTS

187. GENERAL COMMENTS

188. GENERAL COMMENTS

189. GENERAL COMMENTS

190. GENERAL COMMENTS

191. GENERAL COMMENTS

192. GENERAL COMMENTS

193. GENERAL COMMENTS

194. GENERAL COMMENTS

195. GENERAL COMMENTS

196. GENERAL COMMENTS

197. GENERAL COMMENTS

198. GENERAL COMMENTS

199. GENERAL COMMENTS

200. GENERAL COMMENTS

201. GENERAL COMMENTS

202. GENERAL COMMENTS

203. GENERAL COMMENTS

204. GENERAL COMMENTS

205. GENERAL COMMENTS

206. GENERAL COMMENTS

207. GENERAL COMMENTS

208. GENERAL COMMENTS

209. GENERAL COMMENTS

210. GENERAL COMMENTS

211. GENERAL COMMENTS

212. GENERAL COMMENTS

213. GENERAL COMMENTS

214. GENERAL COMMENTS

215. GENERAL COMMENTS

216. GENERAL COMMENTS

217. GENERAL COMMENTS

218. GENERAL COMMENTS

219. GENERAL COMMENTS

220. GENERAL COMMENTS

221. GENERAL COMMENTS

222. GENERAL COMMENTS

223. GENERAL COMMENTS

224. GENERAL COMMENTS

225. GENERAL COMMENTS

226. GENERAL COMMENTS

227. GENERAL COMMENTS

228. GENERAL COMMENTS

229. GENERAL COMMENTS

230. GENERAL COMMENTS

231. GENERAL COMMENTS

232. GENERAL COMMENTS

233. GENERAL COMMENTS

234. GENERAL COMMENTS

235. GENERAL COMMENTS

236. GENERAL COMMENTS

237. GENERAL COMMENTS

238. GENERAL COMMENTS

239. GENERAL COMMENTS

240. GENERAL COMMENTS

241. GENERAL COMMENTS

242. GENERAL COMMENTS

243. GENERAL COMMENTS

244. GENERAL COMMENTS

245. GENERAL COMMENTS

246. GENERAL COMMENTS

247. GENERAL COMMENTS

248. GENERAL COMMENTS

249. GENERAL COMMENTS

250. GENERAL COMMENTS

251. GENERAL COMMENTS

252. GENERAL COMMENTS

253. GENERAL COMMENTS

254. GENERAL COMMENTS

255. GENERAL COMMENTS

256. GENERAL COMMENTS

257. GENERAL COMMENTS

258. GENERAL COMMENTS

259. GENERAL COMMENTS

260. GENERAL COMMENTS

261. GENERAL COMMENTS

262. GENERAL COMMENTS

263. GENERAL COMMENTS

264. GENERAL COMMENTS

265. GENERAL COMMENTS

266. GENERAL COMMENTS

267. GENERAL COMMENTS

268. GENERAL COMMENTS

269. GENERAL COMMENTS

270. GENERAL COMMENTS

271. GENERAL COMMENTS

272. GENERAL COMMENTS

273. GENERAL COMMENTS

274. GENERAL COMMENTS

275. GENERAL COMMENTS

276. GENERAL COMMENTS

277. GENERAL COMMENTS

278. GENERAL COMMENTS

279. GENERAL COMMENTS

280. GENERAL COMMENTS

281. GENERAL COMMENTS

282. GENERAL COMMENTS

283. GENERAL COMMENTS

284. GENERAL COMMENTS

285. GENERAL COMMENTS

286. GENERAL COMMENTS

287. GENERAL COMMENTS

288. GENERAL COMMENTS

289. GENERAL COMMENTS

290. GENERAL COMMENTS

291. GENERAL COMMENTS

292. GENERAL COMMENTS

293. GENERAL COMMENTS

294. GENERAL COMMENTS

295. GENERAL COMMENTS

296. GENERAL COMMENTS

297. GENERAL COMMENTS

298. GENERAL COMMENTS

299. GENERAL COMMENTS

300. GENERAL COMMENTS

301. GENERAL COMMENTS

302. GENERAL COMMENTS

303. GENERAL COMMENTS

304. GENERAL COMMENTS

305. GENERAL COMMENTS

306. GENERAL COMMENTS

307. GENERAL COMMENTS

308. GENERAL COMMENTS

Submit to Appropriate
District Office
State Lease - 4 copies
Fee Lease - 3 copies

State of New Mexico
Energy, Minerals and Natural Resources Department

Form C-102
Revised 1-1-89

OIL CONSERVATION DIVISION

P.O. Box 2088
Santa Fe, New Mexico 87504-2088

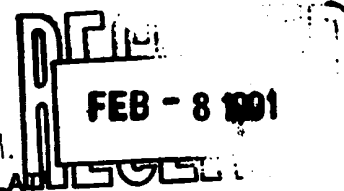
DISTRICT I
P.O. Box 1980, Hobbs, NM 88240

DISTRICT II
P.O. Drawer DD, Artesia, NM 88210

DISTRICT III
1000 Rio Brazos Rd., Aztec, NM 87410

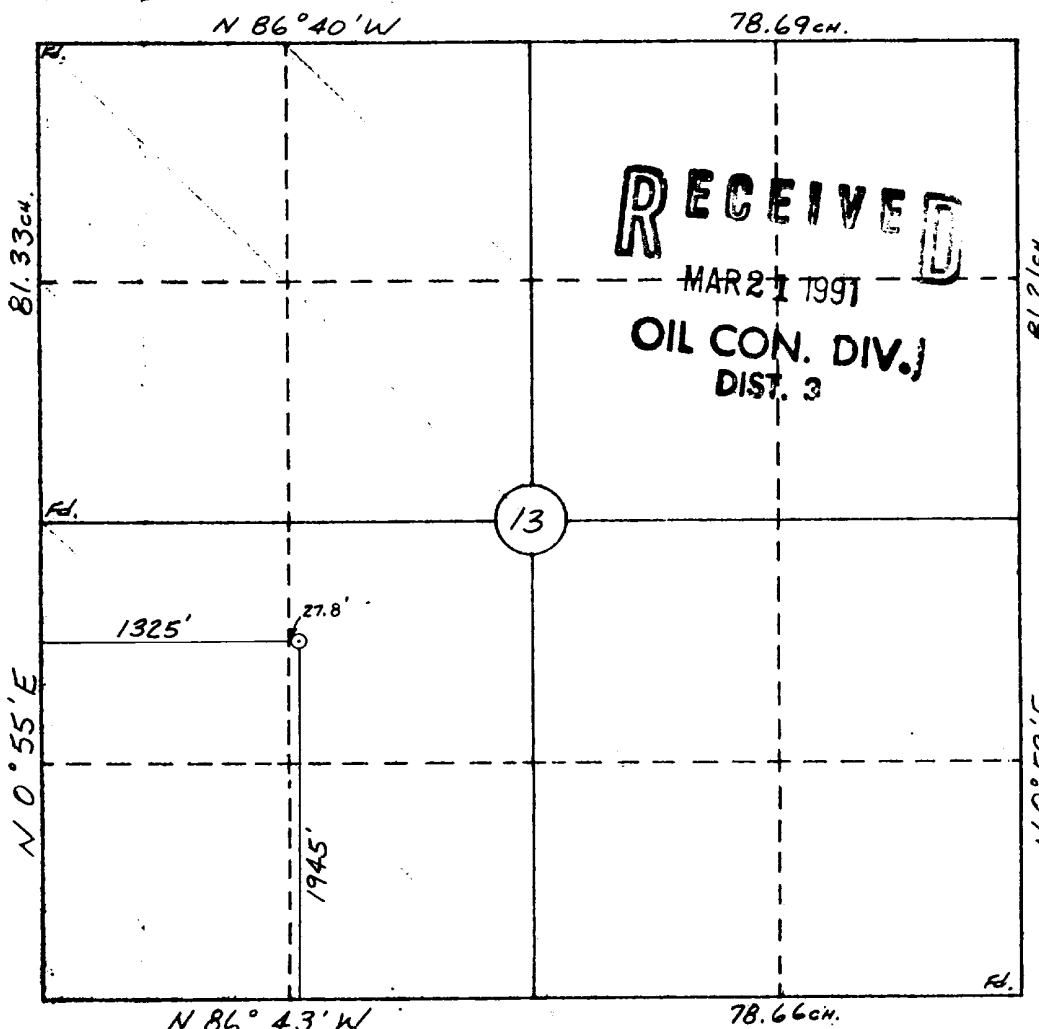
WELL LOCATION AND AGREEMENT DEDICATION PLAT

All Distances must be from the outer boundaries of the section



Operator MARALEX RESOURCES, INC.		Lease OXNARD W.N. FEDERAL		Well No. 9
Unit Letter K	Section 13	Township 27 N	Range 8 W	County San Juan
Actual Footage Location of Well: 1945 feet from the South line and 1325 feet from the West line				
Ground level Elev. 6577	Producing Formation Fruitland Coal	Pool Basin Fruitland Coal	Dedicated Acreage 320 Acres	
<p>1. Outline the acreage dedicated to the subject well by colored pencil or hatchure marks on the plat below.</p> <p>2. If more than one lease is dedicated to the well, outline each and identify the ownership thereof (both as to working interest and royalty).</p> <p>3. If more than one lease of different ownership is dedicated to the well, have the interest of all owners been consolidated by communitization, unitization, force-pooling, etc.? <input type="checkbox"/> Yes <input checked="" type="checkbox"/> No If answer is "yes" type of consolidation _____</p> <p>If answer is "no" list the owners and tract descriptions which have actually been consolidated. (Use reverse side of this form if necessary.) _____</p> <p>No allowable will be assigned to the well until all interests have been consolidated (by communitization, unitization, forced-pooling, or otherwise) or until a non-standard unit, eliminating such interest, has been approved by the Division.</p>				

0 330 660 990 1320 1650 1980 2310 2640 2970 3300 3630 3960 4290 4620 4950 5280 5610 5940 6270 6600



OPERATOR CERTIFICATION

I hereby certify that the information contained herein is true and complete to the best of my knowledge and belief.

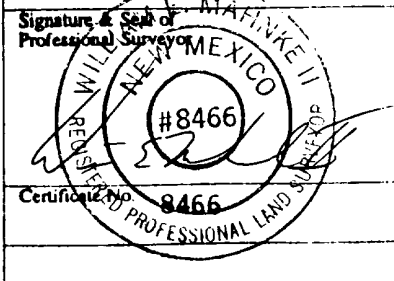
Signature
A. M. O'Hare
Printed Name
A. M. O'Hare
Position
President
Company
Maralex Resources, Inc.
Date
Feb. 15, 1991

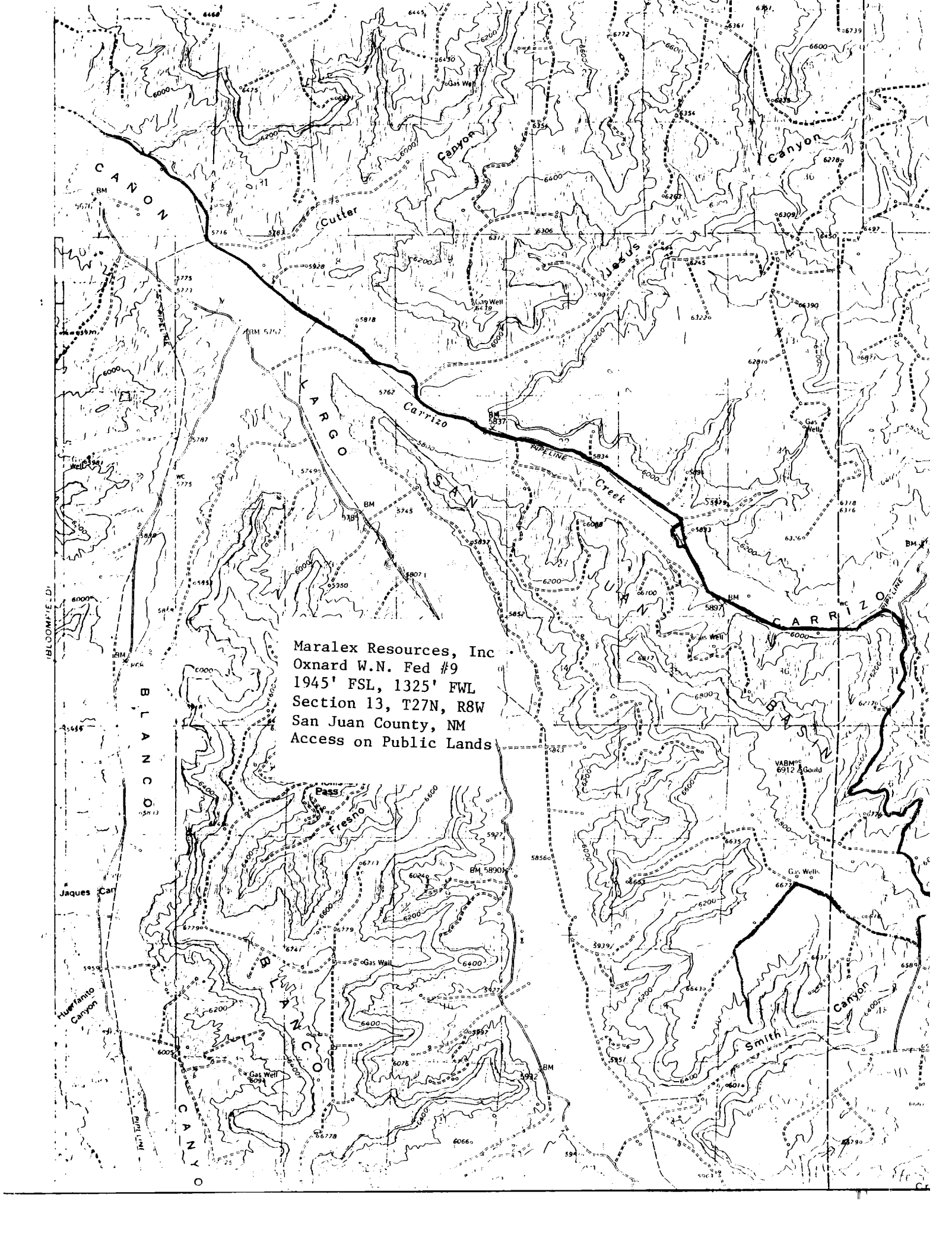
SURVEYOR CERTIFICATION

I hereby certify that the well location shown on this plat was plotted from field notes of actual surveys made by me or under my supervision, and that the same is true and correct to the best of my knowledge and belief.

2-5-91

Date Surveyed
William F. Mahnke II
Signature & Seal of
Professional Surveyor





Maralex Resources, Inc
Oxnard W.N. Fed #9
1945' FSL, 1325' FWL
Section 13, T27N, R8W
San Juan County, NM
Access on Public Lands