

UNITED STATES  
DEPARTMENT OF THE INTERIOR(Other instructions on  
reverse side)

## GEOLOGICAL SURVEY

## APPLICATION FOR PERMIT TO DRILL, DEEPEN, OR PLUG BACK

## 1a. TYPE OF WORK

DRILL ☒DEEPEN ☐PLUG BACK ☐

## b. TYPE OF WELL

OIL  
WELL ☒GAS  
WELL ☐OTHER ☐SINGLE  
ZONE ☒MULTIPLE  
ZONE ☐

## 2. NAME OF OPERATOR

DUGAN PRODUCTION CORP.

## 3. ADDRESS OF OPERATOR

P.O. Box 420, Farmington, NM 87499

## 4. LOCATION OF WELL (Report location clearly and in accordance with any State requirements.)\*

At surface

1730' FSL & 595' FWL  
At proposed prod. zone

## 14. DISTANCE IN MILES AND DIRECTION FROM NEAREST TOWN OR POST OFFICE\*

approx. 18 miles South of Farmington, NM

## 15. DISTANCE FROM PROPOSED\*

LOCATION TO NEAREST  
PROPERTY OR LEASE LINE, FT.  
(Also to nearest drlg. unit line, if any)

595'

## 16. NO. OF ACRES IN LEASE

1600

18. DISTANCE FROM PROPOSED LOCATION\* 1420' From PSA  
TO NEAREST WELL, DRILLING, COMPLETED,  
OR APPLIED FOR, ON THIS LEASE, FT.

in NE/SW

## 19. PROPOSED DEPTH

5200'

17. NO. OF ACRES ASSIGNED  
TO THIS WELL

1/80

## 20. ROTARY OR CABLE TOOLS

Rotary

## 21. ELEVATIONS (Show whether DF, RT, GR, etc.)

6390' GL; 6402' RKB

This location is subject to technical and  
procedural review pursuant to 43 CFR 3155.3  
and appeal pursuant to 43 CFR 3155.4.

## 22. APPROX. DATE WORK WILL START\*

ASAP

## PROPOSED CASING AND CEMENTING PROGRAM

SIZE OF HOLE	SIZE OF CASING	WEIGHT PER FOOT	SETTING DEPTH	QUANTITY OF CEMENT
12-1/4"	8-5/8"	24#	200'	159 c.f. circ. to surface
7-7/8"	4-1/2"	10.5#	5200'	1663 c.f. circ. to surface

Plan to drill a 12-1/4" hole and set 200' of 8-5/8" OD, 24#, J-55 surface casing; then plan to drill a 7-7/8" hole to total depth with gel-water-mud program to test the Gallup formation. Plan to run IES and CDL logs. If determined productive, will run 4-1/2", 10.5#, J-55 casing with stage tool, selectively perforate, frac, clean out after frac and complete well.

RECEIVED

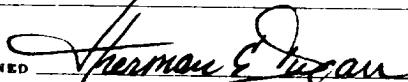
AUG 14 1991

OIL CON. DIV.  
DIST. 3

IN ABOVE SPACE DESCRIBE PROPOSED PROGRAM: If proposal is to deepen or plug back, give data on present productive zone and proposed new productive zone. If proposal is to drill or deepen directionally, give pertinent data on subsurface locations and measured and true vertical depths. Give blowout preventer program, if any.

24.

SIGNED



TITLE Vice-President

DATE 4-15-91

(This space for Federal or State office use)

PERMIT NO.

APPROVAL DATE

APPROVED  
AS AMENDED

APPROVED BY

TITLE

CONDITIONS OF APPROVAL, IF ANY:

DATE

AUG 12 1991  
  
AREA MANAGER

\*See Instructions On Reverse Side

NMOOD

Submit to Appropriate  
District Office  
State Lease - 4 copies  
Fee Lease - 3 copies

State of New Mexico  
Energy, Minerals and Natural Resources Department

Form C-182  
Revised 1-1-89

OIL CONSERVATION DIVISION

P.O. Box 2088

Santa Fe, New Mexico 87504-2088

DISTRICT I  
P.O. Box 1980, Hobbs, NM 88240

DISTRICT II  
P.O. Drawer DD, Artesia, NM 88210

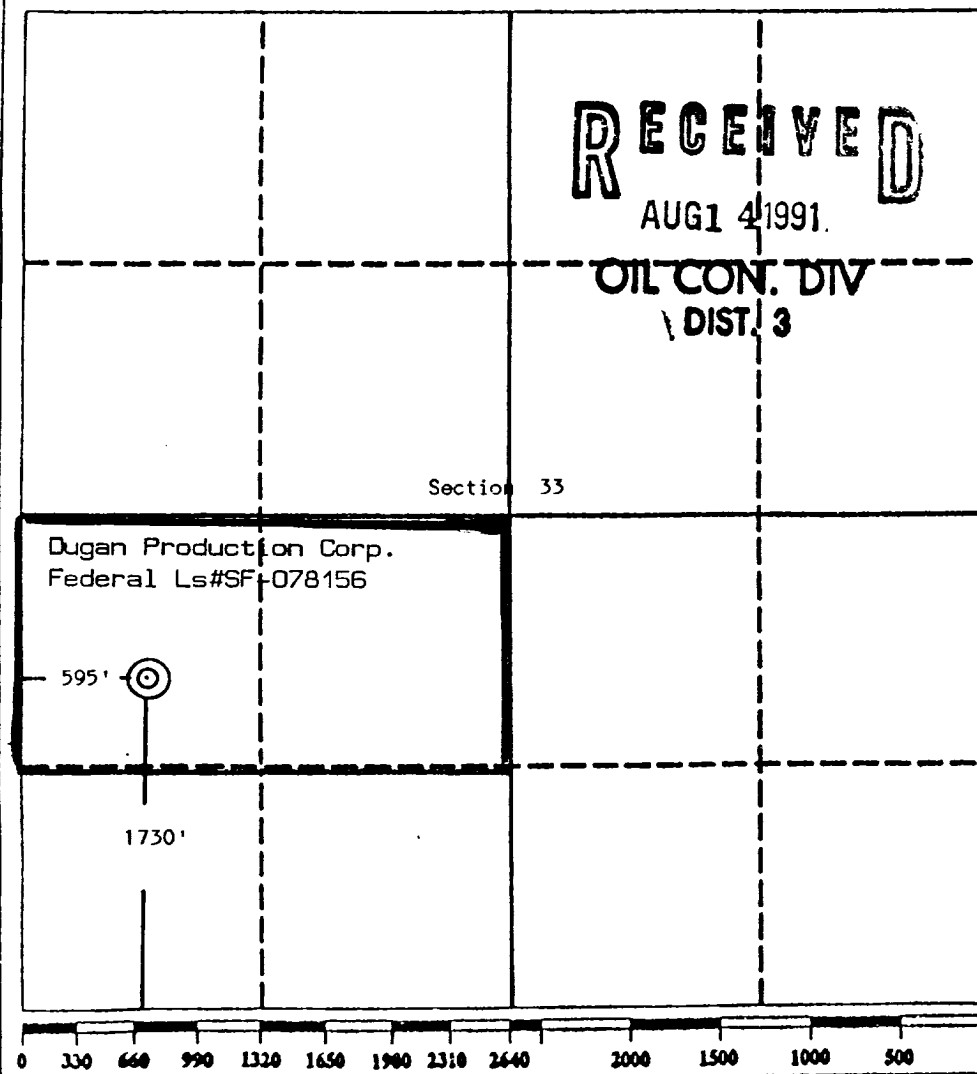
DISTRICT III  
1000 Rio Brazos Rd., Aztec, NM 87410

WELL LOCATION AND ACREAGE DEDICATION PLAT

All Distances must be from the outer boundaries of the section

Operator Dugan Production Corporation			Lease Salge A Federal		Well No. 5
Unit Letter L	Section 33	Township 26 North	Range 13 West	County San Juan	
Actual Footage Location of Well: 1730 feet from the South line and 595 feet from the West line					
Ground level Elev. 6390'	Producing Formation Gallup		Pool Bisti Lower Gallup		Dedicated Acreage: 80 Acres

1. Outline the acreage dedicated to the subject well by colored pencil or hatchure marks on the plat below.
2. If more than one lease is dedicated to the well, outline each and identify the ownership thereof (both as to working interest and royalty).
3. If more than one lease of different ownership is dedicated to the well, have the interest of all owners been consolidated by communitization, unitization, force-pooling, etc?  
☐ Yes ☐ No If answer is "yes" type of consolidation \_\_\_\_\_  
If answer is "no" list the owners and tract descriptions which have actually been consolidated. (Use reverse side of this form if necessary).  
No allowable will be assigned to the well until all interests have been consolidated (by communitization, unitization, forced-pooling, or otherwise) or until a non-standard unit, eliminating such interest, has been approved by the Division.



OPERATOR CERTIFICATION

I hereby certify that the information contained herein is true and complete to the best of my knowledge and belief.

Signature: *Sherman E. Dugan*

Printed Name

Sherman E. Dugan

Position

Vice-President

Company

Dugan Production Corp.

Date

4-15-91

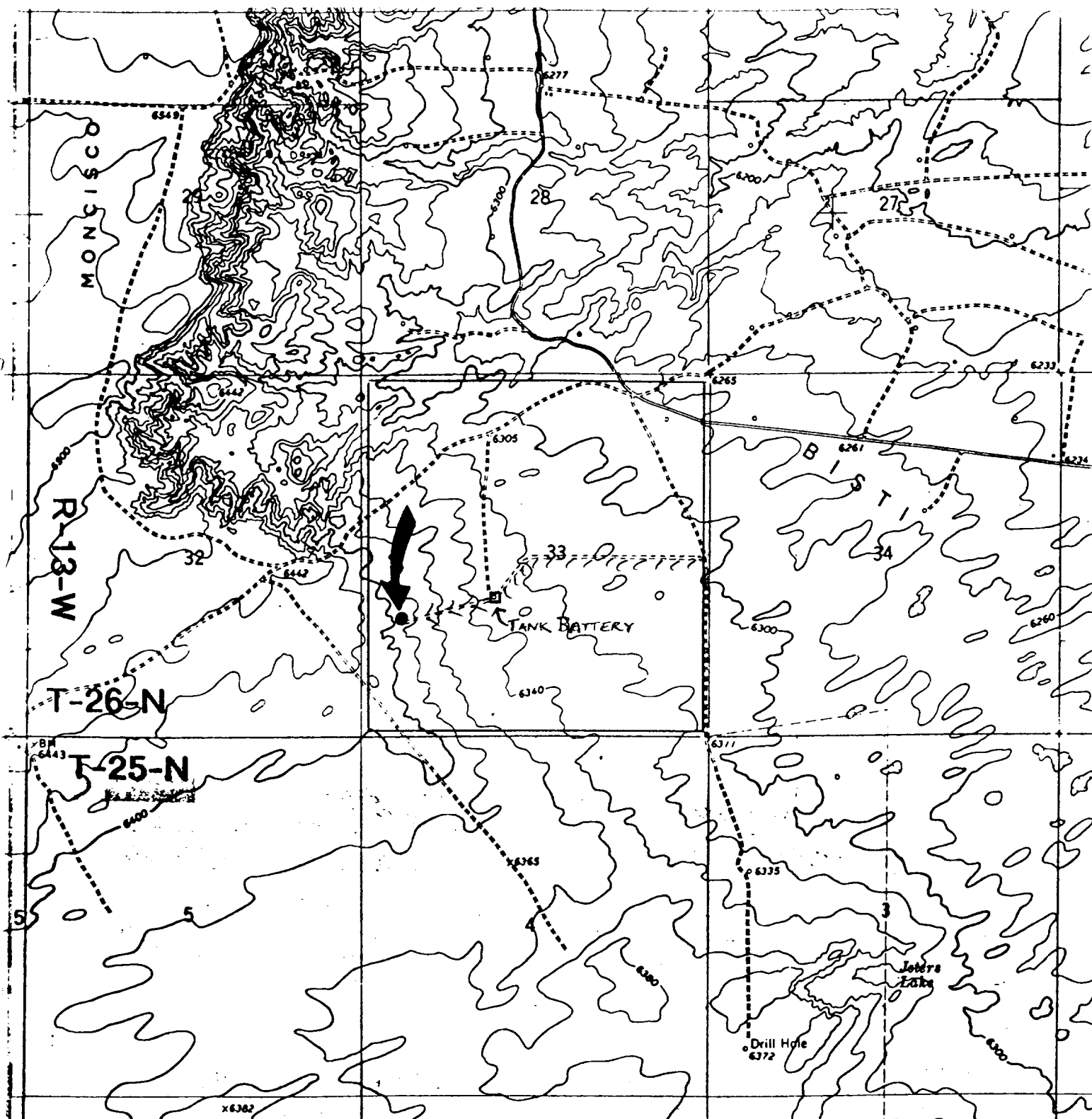
SURVEYOR CERTIFICATION

I hereby certify that the well location shown on this plat was plotted from field notes of actual surveys made by me or under my supervision, and that the same is true and correct to the best of my knowledge and belief.

Date Surveyed February 14, 1991

Signature & Seal of Professional Surveyor

Edgar Risenhoover  
NEW MEXICO  
5979  
Edgar Risenhoover



Dugan Production Corp. - Salge Federal A #5

### Existing Roads

### Exhibit E

Vicinity of nearest town or reference pt.  
approx. 18 miles South of Farmington, NM

Type of surface dirt

Conditions good

Other \_\_\_\_\_

Reference map: USGS map Moncisco Wash  
1966 and The Pillar 1966

### Planned Access Road(s)

### Exhibit E

Width 20' Maximum grades 5%

Drainage design as required

Cuts & Fills see diagram

Surfacing material none

Turnouts

Culverts

Gates

Cattleguards

Fence cuts

Waterbars

Access road(s) (do/do not cross Fed/Ind land.