

UNITED STATES
DEPARTMENT OF THE INTERIOR
BUREAU OF LAND MANAGEMENT

(Other instructions on
reverse side)

Budget Bureau No. 1004-0136
Expires August 31, 1985

APPLICATION FOR PERMIT TO DRILL, DEEPEN, OR PLUG BACK

1a. TYPE OF WORK

DRILL ☒

DEEPEN ☐

PLUG BACK ☐

b. TYPE OF WELL

OIL
WELL ☐

GAS
WELL ☒

OTHER

SINGLE
ZONE ☒

MULTIPLE
ZONE ☐

2. NAME OF OPERATOR

SG Interests I, Ltd. Attn: A. M. O'Hare

3. ADDRESS OF OPERATOR

P O Box 421, Blanco, NM 87412-0421

4. LOCATION OF WELL (Report location clearly and in accordance with any State requirements)

At surface

2350' FSL & 1650' FWL (NESW)

At proposed prod. zone

14. DISTANCE IN MILES AND DIRECTION FROM NEAREST TOWN OR POST OFFICE*

20 miles South of Farmington, New Mexico

15. DISTANCE FROM PROPOSED*

LOCATION TO NEAREST

PROPERTY OR LEASE LINE, FT.

(Also to nearest drlg. unit line, if any)

1650'

18. DISTANCE FROM PROPOSED LOCATION*

TO NEAREST WELL, DRILLING, COMPLETED,

OR APPLIED FOR, ON THIS LEASE, FT.

500'

16. NO. OF ACRES IN LEASE

1120 640

19. PROPOSED DEPTH

1950' 1530'

17. NO. OF ACRES ASSIGNED
TO THIS WELL

W/ 320

20. ROTARY OR CABLE TOOLS

Rotary

21. ELEVATIONS (Show whether DF, RT, GR, etc.)

6,147' GR

This action is subject to technical and
procedural review pursuant to 43 CFR 3165.3
and appeal pursuant to 43 CFR 3165.4.

22. APPROX. DATE WORK WILL START*

as soon as permitted

23.

PROPOSED CASING AND CEMENTING PROGRAM

DILLING OPERATIONS AUTHORIZED ARE

SUBJECT TO COMPLIANCE WITH ATTACHED

QUANTITY OF CEMENT

GENERAL REQUIREMENTS

118 class B 2% CaCl₂

275 class B 2% CaCl₂

464 ft³ w/ ADDITIVES.

SIZE OF HOLE	SIZE OF CASING	WEIGHT PER FOOT	SETTING DEPTH
12-1/4"	8-5/8"	24#, J-55	250' 236 ft ³
7-7/8"	5-1/2"	15.5#, J-55	1950' 1530'

SG Interests I, Ltd., proposes to drill a vertical well to develop the Fruitland Coal formation at the above described site. The well will be drilled using a fresh water based low solids non-dispersed mud system. A double ram type blowout preventer and choke assembly will be used to maintain well control throughout drilling operations. A description of the BOP equipment and Choke assembly along with schematic sketches of the equipment are included as Exhibits to this application. A full suite of logs will be run upon reaching total depth. Both casing strings will be cemented to surface in separate single stage jobs. A high strength cement will be placed across the pay zone and at least 500 feet above the bottom of the hole. A minimum of six centralizer will be used to optimize placement of the cement around the pipe.

Formerly approved as the Delhi Taylor "A" #8.

If you have any questions please contact A. M. O'Hare at (505) 325-5599.

IN ABOVE SPACE DESCRIBE PROPOSED PROGRAM: If proposal is to deepen or plug back, give data on present productive zone and proposed new productive zone. If proposal is to drill or deepen directionally, give pertinent data on subsurface locations and measured and true vertical depths. Give blowout preventer program, if any.

24. A. M. O'Hare

SIGNED

TITLE Agent SG Interests

DATE 11/16/92

(This space for Federal or State office use)

PERMIT NO.

APPROVAL DATE

APPROVED
AS AMENDED

APPROVED BY

TITLE

DATE

CONDITIONS OF APPROVAL, IF ANY:

NMOCD

*See Instructions On Reverse Side

AREA MANAGER

Title 18 U.S.C. Section 1001, makes it a crime for any person knowingly and willfully to make to any department or agency of the United States any false, fictitious or fraudulent statements or representations as to any matter within its jurisdiction.

RECEIVED
DEC 17 1992
OIL CON. DIV.
DIST. 3

RECEIVED
BLM
DEC 16 PM 2:45
BUREAU OF LAND MGMT.

24

OIL CONSERVATION DIVISION

DISTRICT I
P.O. Box 1980, Hobbs, NM 88240

P.O. Box 2088

Santa Fe, New Mexico 87504-2088

DISTRICT II
P.O. Drawer DD, Artesia, NM 88210DISTRICT III
1000 Rio Brazos Rd., Aztec, NM 87410

WELL LOCATION AND ACREAGE DEDICATION PLAT BLM

All Distances must be from the outer boundaries of the section

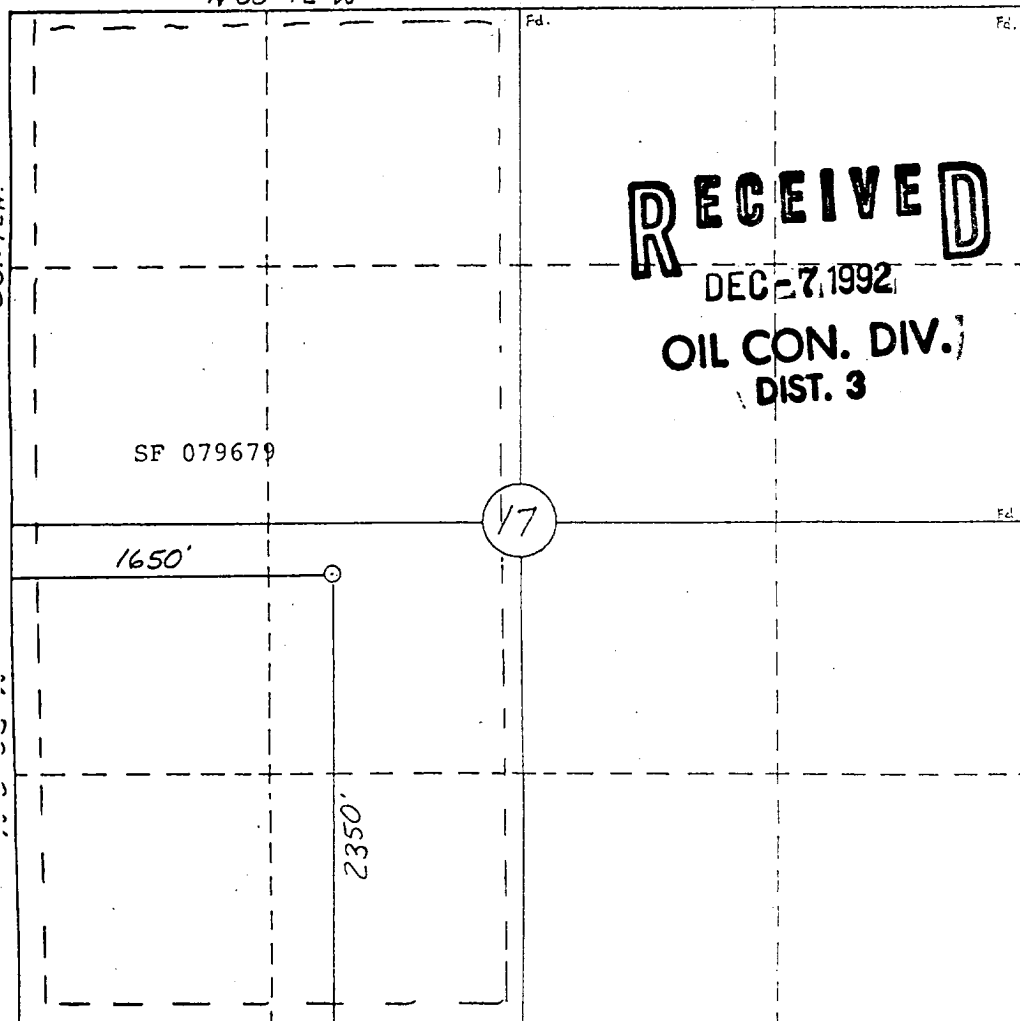
Operator SG INTERESTS I, LTD.			Lease GALLEGOS FEDERAL 26-11-17		92 NOV 16 PM 2:45
Unit Letter K	Section 17	Township 26 N	Range 11 W	SIS FA County SANTIAGO, N.M. NMNM San Juan	
Actual Footage Location of Well: 2350 feet from the South line and 1650 feet from the West line					
Ground level Elev. 6147	Producing Formation Fruitland	Pool Basin Fruitland	Dedicated Acreage: 320 Acres		

- Outline the acreage dedicated to the subject well by colored pencil or hatchure marks on the plat below.
- If more than one lease is dedicated to the well, outline each and identify the ownership thereof (both as to working interest and royalty).
- If more than one lease of different ownership is dedicated to the well, have the interest of all owners been consolidated by communitization, unitization, force-pooling, etc?
☐ Yes ☐ No If answer is "yes" type of consolidation _____
 If answer is "no" list the owners and tract descriptions which have actually been consolidated. (Use reverse side of this form if necessary). _____
 No allowable will be assigned to the well until all interests have been consolidated (by communitization, unitization, forced-pooling, or otherwise) or until a non-standard unit, eliminating such interest, has been approved by the Division.

0 330 660 990 1320 1650 1980 2310 2640 2000 1500 1000 500 0

N 88° 42' W

80.08 ch.



OPERATOR CERTIFICATION

I hereby certify that the information contained herein is true and complete to the best of my knowledge and belief.

Signature

A. M. O'Hare

Printed Name

A. M. O'Hare

Position

President/Maralex

Company

Agent/ SG Interests

Date

11/16/92

SURVEYOR CERTIFICATION

I hereby certify that the well location shown on this plat was plotted from field notes of actual surveys made by me or under my supervision, and that the same is true and correct to the best of my knowledge and belief.

6-2-90

Date Surveyed

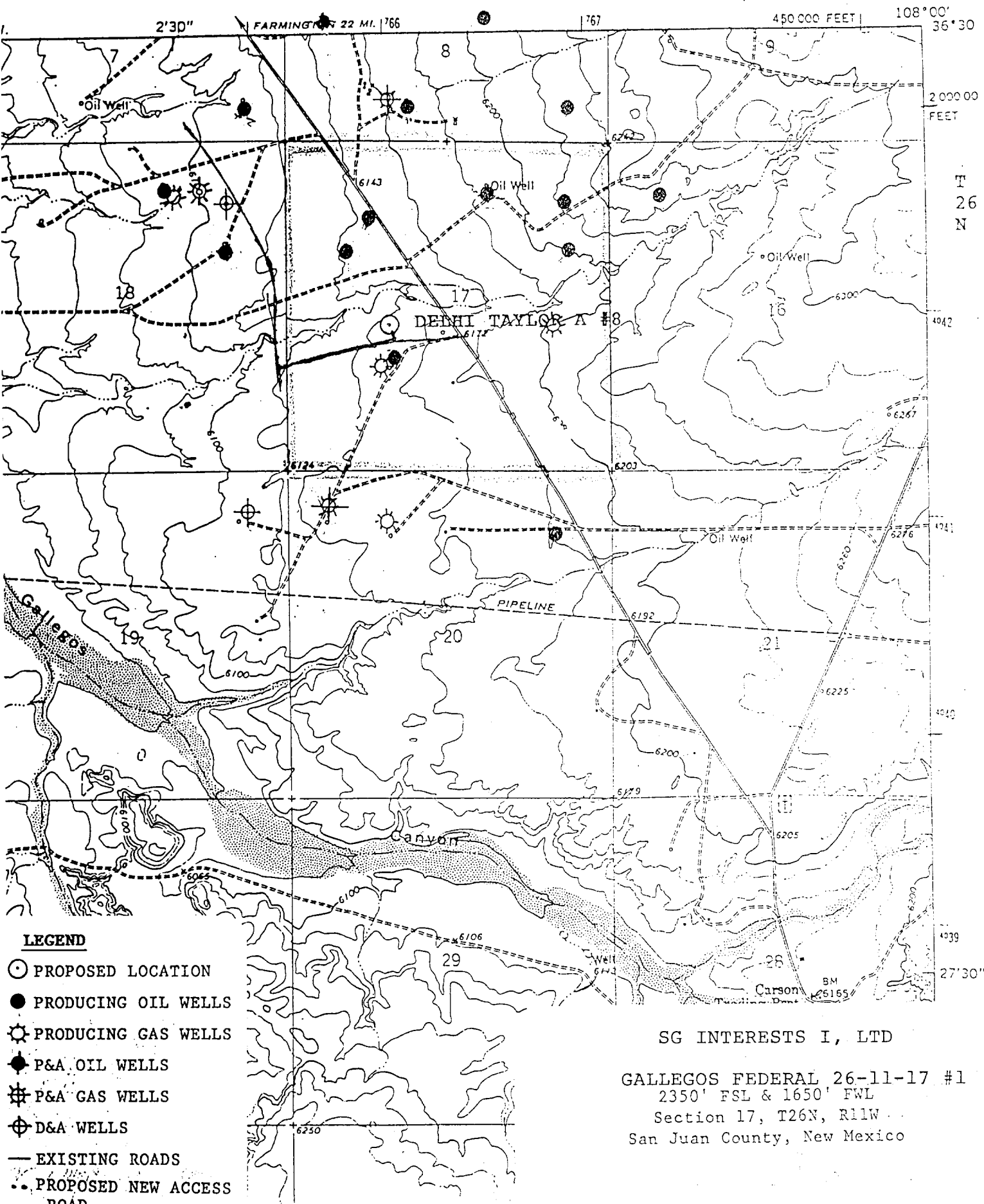
William E. Mankie II

Signature of State of MEXICO Professional Surveyor

#8465
 WILLIAM E. MANKIE II
 PROFESSIONAL SURVEYOR
 CERTIFICATE NO. 8465

R 11 W

7.5 MINUTE SERIES (TOPOGRAPHIC)



LEGEND

- PROPOSED LOCATION
- PRODUCING OIL WELLS
- ⊗ PRODUCING GAS WELLS
- ◆ P&A OIL WELLS
- ⊠ P&A GAS WELLS
- ⊕ D&A WELLS
- EXISTING ROADS
- .. PROPOSED NEW ACCESS ROAD
- LEASE BOUNDARY

SG INTERESTS I, LTD

GALLEGOS FEDERAL 26-11-17 #1
 2350' FSL & 1650' FWL
 Section 17, T26N, R11W
 San Juan County, New Mexico